

PENGUMUMAN TRAFIK

07 DISEMBER 2018

PENUTUPAN PENUH DAN LALUAN KONTRA SEPANJANG JALAN KEPONG (ARAH JINJANG DAN ARAH SUNGAI BULOH)

Tarikh	09 Disember 2018 – 22 Februari 2019
Masa	10:00 malam – 6:00 pagi
Jangka Masa	73 hari
Sebab	Untuk kerja-kerja pelancaran kekotak segmen (SBG) dan sebarang kerja yang berkaitan

Untuk makluman, penutupan penuh dan laluan kontra **secara berkala** sepanjang Jalan Kepong (Arah Sungai Buloh dan Arah Jinjang) akan bermula **dari 09 Disember 2018 hingga 22 Februari 2019**. Tempoh masa untuk kerja-kerja akan bermula **10:00 malam – 6:00 pagi selama 73 hari**. Pelan pengurusan trafik adalah seperti berikut :

Penutupan A: Penutupan penuh jalan masuk dan keluar dari Jalan Kepong menuju Kawasan Perniagaan Desa Jaya sejauh 50 meter. Sepanjang penutupan ini, pemandu dari Kawasan Perniagaan Desa Jaya dikehendaki menggunakan laluan alternatif menuju ke Jalan Kepong Garden (Seperti yang ditunjukkan dengan anak panah berwarna **HIJAU** di **Peta 1**).

Penutupan B: Penutupan penuh Jalan Kepong (Arah Jinjang) bermula dari susur masuk Jalan Kepong dari Jalan Kepong Garden hingga ke Balai Polis Kepong sejauh 250 meter. Sepanjang penutupan ini, pemandu dari Selayang dan Sungai Buloh menuju ke Jinjang dikehendaki menggunakan laluan kontra di laluan Jalan Kepong (Arah Sungai Buloh) (Seperti yang ditunjukkan dengan anak panah berwarna **UNGU** di **Peta 1**).

Penutupan C: Penutupan penuh Jalan Kepong (Arah Sungai Buloh) bermula dari AEON Jusco Kepong hingga ke Caltex Jalan Kepong sejauh 850 meter dan penutupan lorong paling kanan Jalan Kepong (Arah Jinjang) sejauh 100 meter bermula dari Sungai Keroh hingga ke Balai Polis Kepong. Sepanjang penutupan ini, pemandu dari Jinjang menuju Sungai Buloh dikehendaki menggunakan laluan kontra di laluan Jalan Kepong (Arah Jinjang) (Seperti yang ditunjukkan dengan anak panah berwarna **BIRU** di **Peta 2**).

Penutupan A, B dan C akan dilaksanakan secara berasingan dan dalam satu-satu masa, hanya akan ada satu (1) penutupan sahaja.

Pengguna jalan raya dinasihatkan untuk mematuhi arahan papan tanda trafik dan pengawal bendera yang bertugas. Untuk maklumat lanjut sila rujuk peta di bawah.

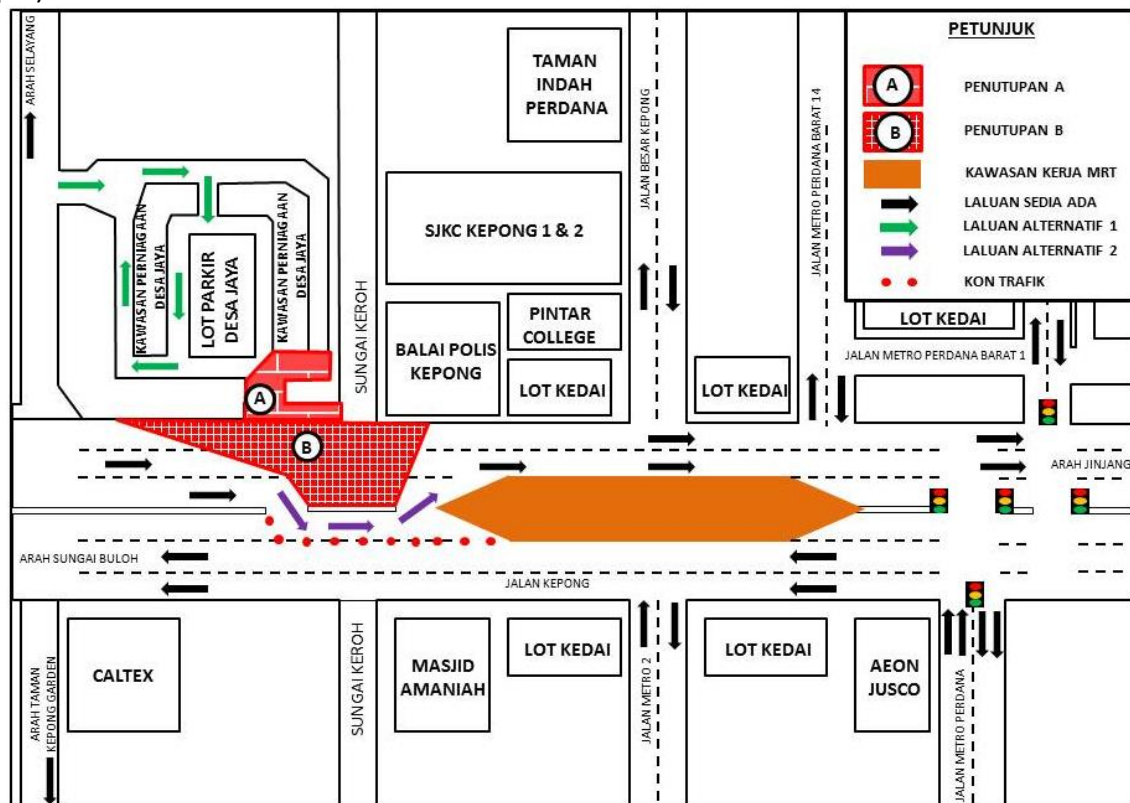
FULL BOUND CLOSURE AND ACTIVATION OF CONTRA FLOW ALONG JALAN KEPONG (SUNGAI BULOH-BOUND AND JINJANG-BOUND)

Date	09 December 2018 – 22 February 2019
Time	10:00pm - 6:00am
Duration	73 days
Reason	To facilitate Segmental Box Girder (SBG) launching and any other works for construction of MRT

There will be full bound closure and activation of contra flow **intermittently** along Jalan Kepong (Sungai Buloh-bound and Jinjang-bound) starting from **09 December 2018 until 22 February 2019**. Construction works will start **10:00pm – 6:00am for 73 days**. The traffic management plan involves the following closures:

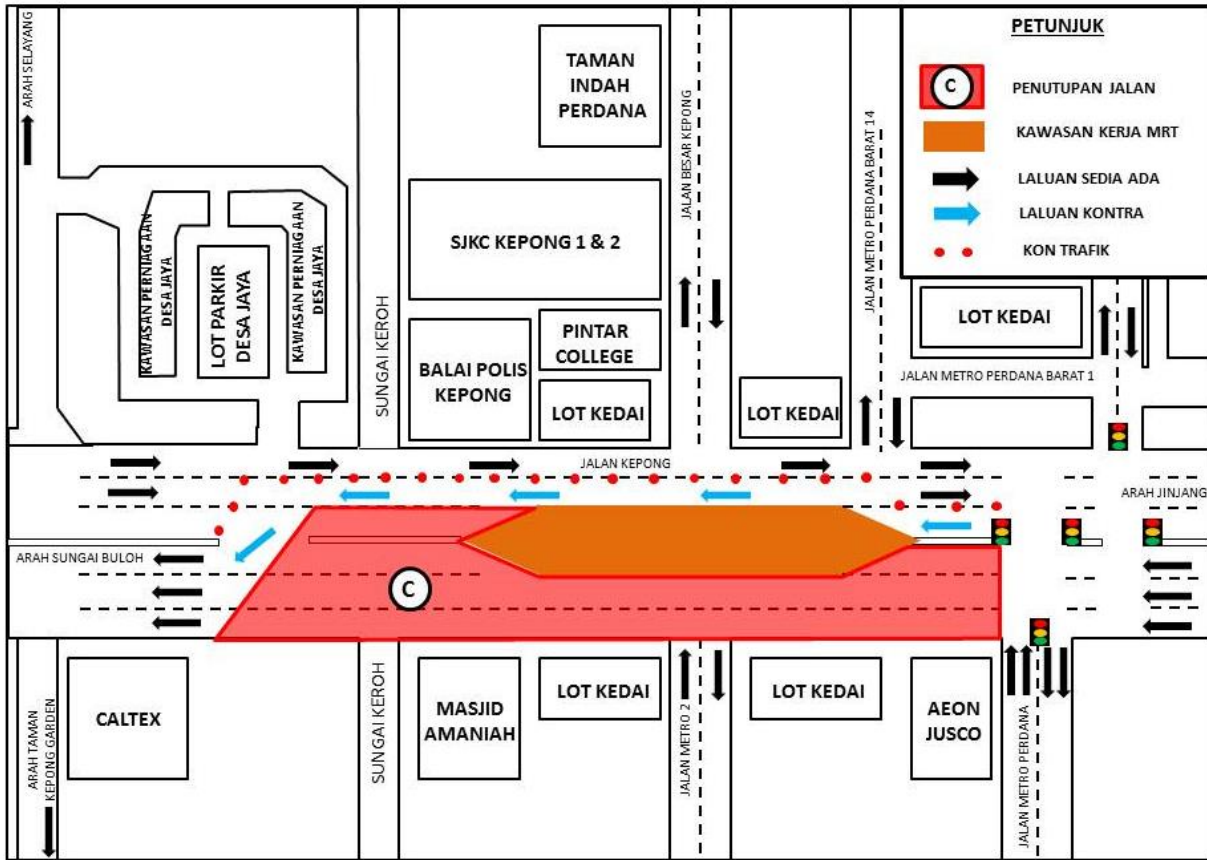
Closure A: Full lane closure at the entrance and exit of Jalan 53 of Taman Desa Jaya entering Jalan Kepong for a total stretch of 50 metres. During this closure, motorists from Desa Jaya Business Centre need to use the alternative entrance and exit to Jalan Kepong Garden (As indicated by the **GREEN** arrows in the appended **Map 1**).

Closure B: Full bound closure along Jalan Kepong (Jinjang-bound) for a stretch of 250 metres starting from the slip road of Jalan Kepong Garden entering Jalan Kepong until in front of Balai Polis Kepong. During this closure, motorists heading to Jinjang will need to use the contra flow on Jalan Kepong (Sungai Buloh-bound) (As indicated by the **PURPLE** arrows in the appended **Map 1**).



MAP 1: FULL BOUND CLOSURE AND ACTIVATION OF CONTRA FLOW ALONG JALAN KEPONG (SUNGAI BULOH-BOUND AND JINJANG-BOUND)

Closure C: Full bound closure along Jalan Kepong (Sungai Buloh-bound) starting from AEON Jusco Kepong until Caltex Jalan Kepong for a total stretch of 850 metres and left lane closure of Jalan Kepong (Jinjang-bound) starting from Sungai Keroh until Balai Polis Kepong. During these closures, motorists from Jinjang heading to Sungai Buloh will need to use the provided contra flow on Jalan Kepong (Jinjang-bound) (As indicated by the **BLUE** arrows in the appended **Map 2**).



MAP 2 : FULL BOUND CLOSURE AND ACTIVATION OF CONTRA FLOW ALONG JALAN KEPONG (SUNGAI BULOH-BOUND AND JINJANG-BOUND)

Closure A, B and C will be conducted in phases and at any one time there will be only one (1) closure. Motorists are advised to follow the traffic signage and flagmen during road closure.

For media enquiries, please contact:

Zaini Ghazali

Tel: +6012 328 1821

zainighazali@azrb.com

Mohar Zainal Abidin

Tel: +603 7493 3961

Mohar@mgjv-kvmrt.com.my

MMC GAMUDA KVMRT (PDP SSP) SDN BHD (1117100-V)
 Block A, Level 17, Menara Mustapha Kamal, PJ Trade Centre
 No 8, Jalan PJU 8/8A, Bandar Damansara Perdana, 47820 Petaling Jaya
 Selangor Darul Ehsan, Malaysia
 T: +603-7494 2222 F: +603-7727 0222 www.mymrt.com.my