

**FOR IMMEDIATE RELEASE :**

**TRAFFIC ANNOUNCEMENT UPDATES FOR MRT CONSTRUCTION WORKS**

**TEMPORARY LANE CLOSURES IN STAGES IN JALAN SG. BESI (SOUTH BOUND)**

<b>Location</b>	Jalan Sg. Besi (South/Seremban-bound)
<b>Date</b>	3 August 2018 – 10 August 2018
<b>Duration</b>	1 week
<b>Reason</b>	To facilitate tunnelling works

**KUALA LUMPUR, 3 August 2018:** MMC Gamuda KVMRT (T) Sdn Bhd (MGKT), the Underground Works Package Contractor for MRT Sungai-Buloh-Serdang- Putrajaya Line (SSP Line) wishes to announce **major traffic management** plan on Jalan Sungai Besi from 3 August 2018 to 10 August 2018.

The traffic management plan (TMP) applies to the south-bound lanes of Jalan Sungai Besi.

Please see map below for the location of the closure.

The TMP is being implemented to facilitate tunnelling works for the SSP Line where the tunnel boring machine will be excavating a tunnel beneath Jalan Sungai Besi.

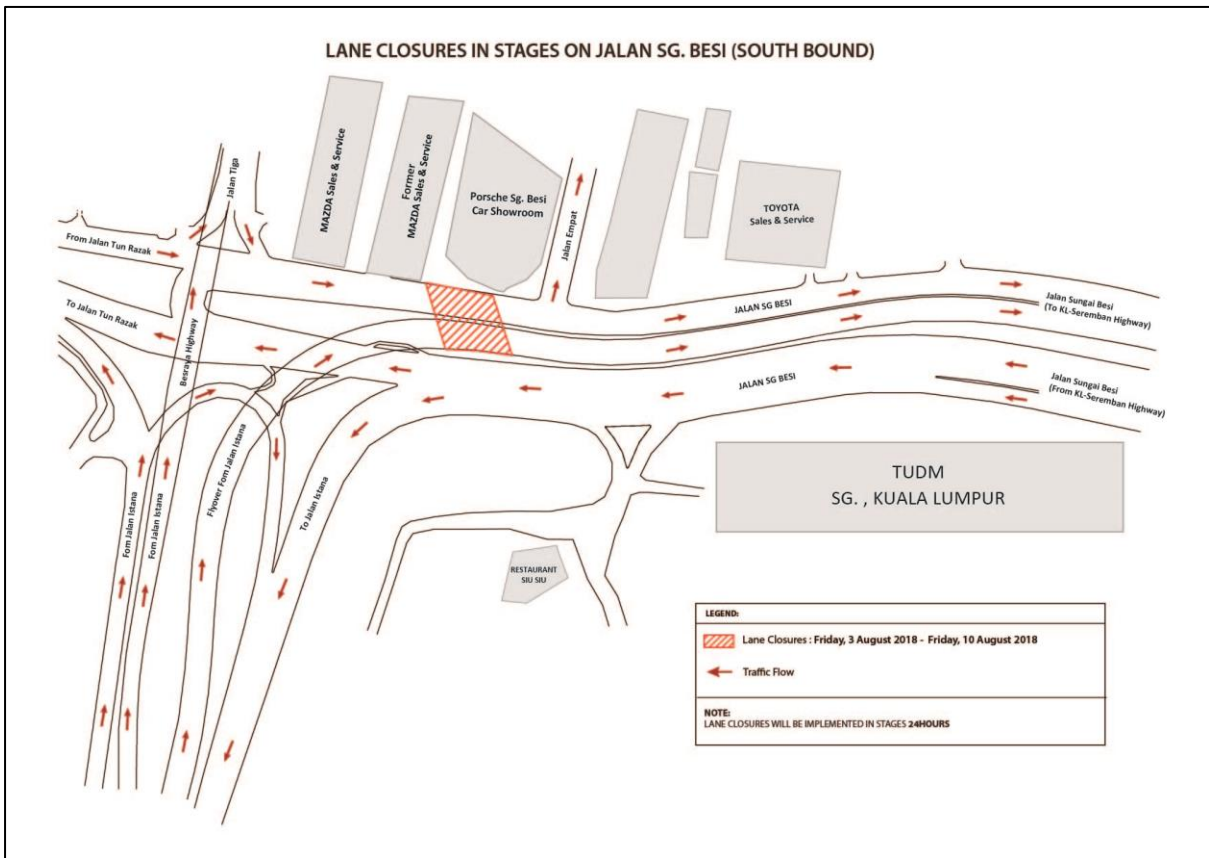
Part of the TMP involves the closure of the right-most (fast) and left-most (slow) lanes on the ramp from Jalan Istana (South-bound) and the right-most (fast) towards the left-most (slow) lanes from Jalan Tun Razak (South-bound) near the former Sg. Besi Mazda and the Sg. Besi Porsche showrooms. The closure will take place in stages and each closure is estimated to last between 24 hours to 48 hours.

With the TMP, congestion is likely to occur along Jalan Sg. Besi (South-bound) although lanes towards all directions will remain open. Road users are advised to use alternative routes during this period. Suggested alternative routes are described in the table and maps attached.

Motorists are advised to follow signage as they approach the location. The MRT Project Emergency Response Team will be deployed to help direct traffic.

For more information the public can visit the MRT website at [www.mymrt.com.my](http://www.mymrt.com.my) or [www.mymrt-underground.com.my](http://www.mymrt-underground.com.my), Twitter @MRTMalaysia or @MRTUnderground, Facebook @MRTMalaysia or @MRTUnderground or call the MRT Hotline at 1-800-82-6868.

MGKT wishes to apologise for the inconvenience caused.



**For media enquiries, please contact:**

**MMC Gamuda KVMRT (T) Sdn Bhd**

Dr. Bhavani Krishna Iyer - 019 312 8303 / Bhavani@kvmrt-ug.com.my

Steven Austin – 010 226 5911 / StevenAustin@kvmrt-ug.com.my

**ALTERNATIVE ROUTES**

DIRECTION	ALTERNATIVE(S)
<p><b>From Jalan Istana towards KL-Seremban Highway (Seremban-bound)</b></p>	<p><b>Option 1:</b></p> <ul style="list-style-type: none"> <li>- From Jalan Istana, motorists are advised to keep left onto Jalan Sg Besi (Jalan Tun Razak-bound), exit towards Jalan Yew Roundabout (Pudu Roundabout) to make a U-Turn back onto Jalan Sg. Besi (South-bound), turn left onto Jalan Satu and right on to Jalan Chan Sow Lin. From there, head towards the Besraya Highway (Salak South-bound), make a U-Turn under the flyover and keep left to make the U-Turn on the left to join KL-Seremban Highway.</li> </ul> <p><b>Option 2:</b></p> <ul style="list-style-type: none"> <li>- Motorists may drive on straight onto the Besraya Highway heading towards MRR2 and make a U-Turn towards Salak South. From there, keep to the left after the turning to Salak South and make a U-Turn under the flyover. From there, keep left after the Razak City Development to make the U-Turn on the left to join KL-Seremban Highway (South-bound).</li> </ul>
<p><b>From Jalan Tun Razak towards KL-Seremban Highway (Seremban-bound)</b></p>	<p><b>Option 1:</b></p> <ul style="list-style-type: none"> <li>- After passing under the Jalan Loke Yew Roundabout, turn left onto Jalan Satu and right on to Jalan Chan Sow Lin. From there, head towards the Besraya Highway (Salak South-bound), keep to the left after the turning to Salak South and make a U-Turn under the flyover. From there, keep left after the Razak City Development to make the U-Turn on the left to join KL-Seremban Highway (South-bound).</li> </ul> <p><b>Option 2:</b></p> <ul style="list-style-type: none"> <li>- Keep left towards the Loke Yew Roundabout near Frasers Business Park and turn right onto Jalan Loke Yew. From there, proceed straight towards Jalan Syed Putra via Jalan Sultan Sulaiman near the Chinese Assembly Hall. Then proceed towards the East-West Link Highway to exit at the ramp towards KL-Seremban Highway after Desa Green Condo.</li> </ul>