

PENGUMUMAN TRAFIK

03 JULAI 2018

1. LANJUTAN PENUTUPAN LORONG AKSES MASUK DAN KELUAR BANDAR SRI DAMANSARA, JALAN KUALA SELANGOR (ARAH SUNGAI BULOH)

| | |
|--------------------|---|
| Tarikh | 05 Julai 2018 – 04 October 2018 |
| Masa | 24 jam |
| Jangka masa | 3 bulan |
| Sebab | Untuk menjalankan kerja-kerja pembinaan tiang, pelancaran kekotak segmen (SBG) dan sebarang kerja berkaitan |

Harap maklum lanjutan penutupan lorong akses masuk dan keluar Bandar Sri Damansara, Jalan Kuala Selangor (Arah Sungai Buloh) akan **ditutup secara berkala** bermula dari **05 Julai 2018 hingga 04 October 2018, 24 jam**. Pelan Pengurusan Trafik untuk penutupan ini adalah seperti berikut:

Penutupan A: Penutupan lorong kiri akses keluar dari Bandar Sri Damansara ke Jalan Kuala Selangor (Arah Sungai Buloh) sepanjang 100 meter.

Penutupan B: Penutupan lorong kanan akses keluar dari Bandar Sri Damansara ke Jalan Kuala Selangor (Arah Sungai Buloh) sepanjang 100 meter.

Penutupan C: Penutupan separa lorong akses masuk ke Bandar Sri Damansara dari Jalan Kuala Selangor (Arah Sungai Buloh) sepanjang 80 meter.

Hanya satu penutupan yang akan dilaksanakan pada setiap masa. Untuk maklumat lanjut sila rujuk peta di bawah.

Penutupan D: Penutupan tetap lorong ini telah diumumkan sejak Ogos, 2016.

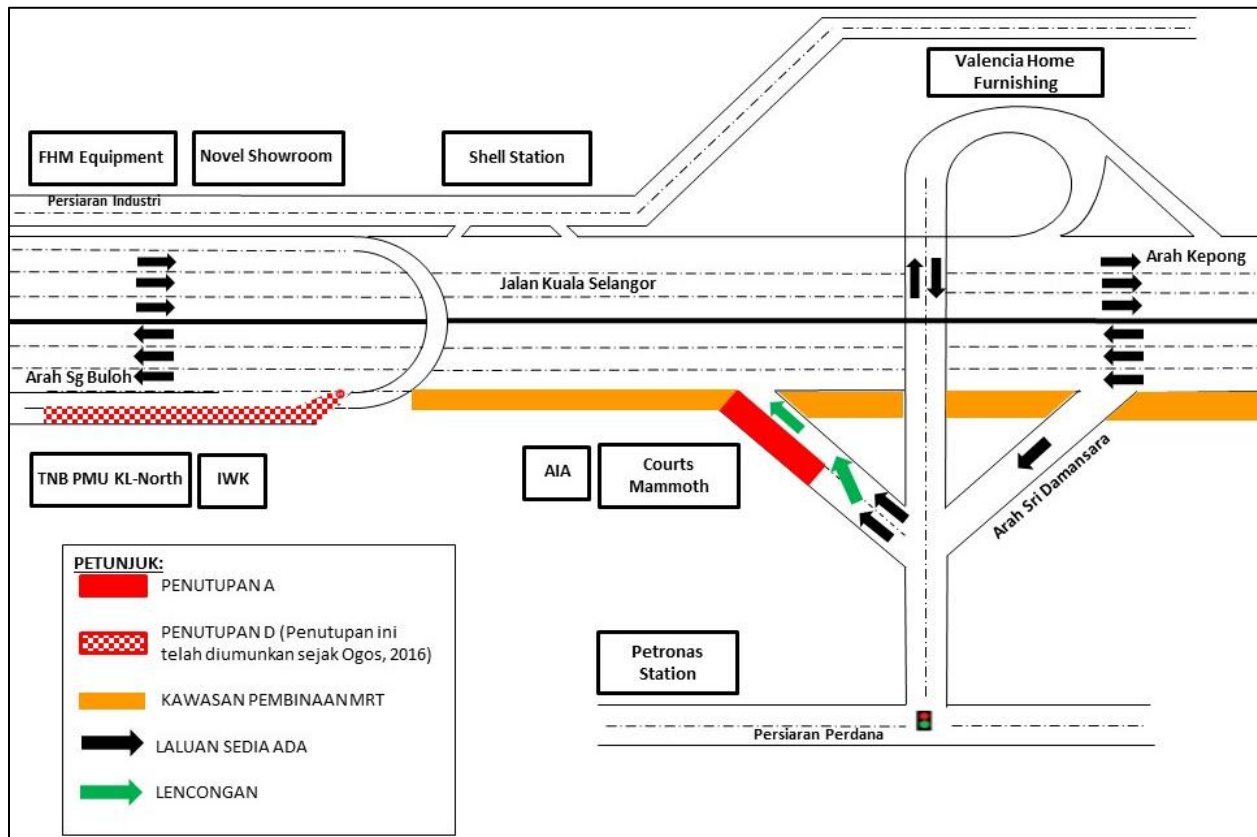
.....

1. CONTINUATION OF LANE CLOSURES AT ACCESS IN AND OUT OF BANDAR SRI DAMANSARA, JALAN KUALA SELANGOR (SUNGAI BULOH-BOUND)

| | |
|-----------------|--|
| Date | 05 Julai 2018 – 04 October 2018 |
| Time | 24 hours |
| Duration | 3 months |
| Reason | To facilitate pier works, SBG launching and any other related works for MRT construction |

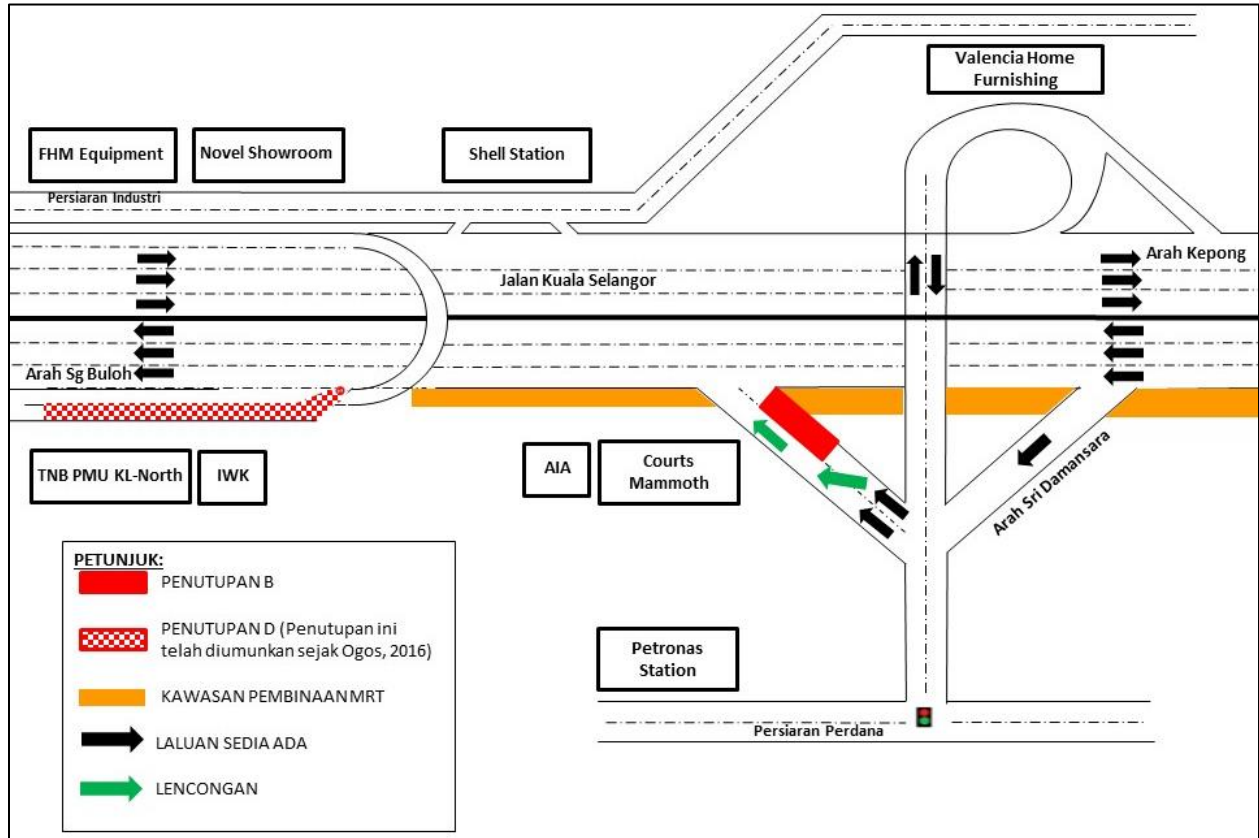
There will be a continuation of lane closures at access in and out of Bandar Sri Damansara, Jalan Kuala Selangor (Sungai Buloh-bound) from **05 Julai 2018 to 04 October 2018, 24 hours (intermittently)**. The traffic management plan involves the following closures:

Closure A: Left lane closure at access out from Bandar Sri Damansara towards Jalan Kuala Selangor (Sungai Buloh-bound) for a stretch of 100 metres.



MAP 1(a) : CONTINUATION OF LEFT LANE CLOSURE OF ACCESS OUT FROM BANDAR SRI DAMANSARA TO JALAN KUALA SELANGOR

Closure B: Right lane closure at access out from Bandar Sri Damansara towards Jalan Kuala Selangor (Sungai Buloh-bound) for a stretch of 100 metres.

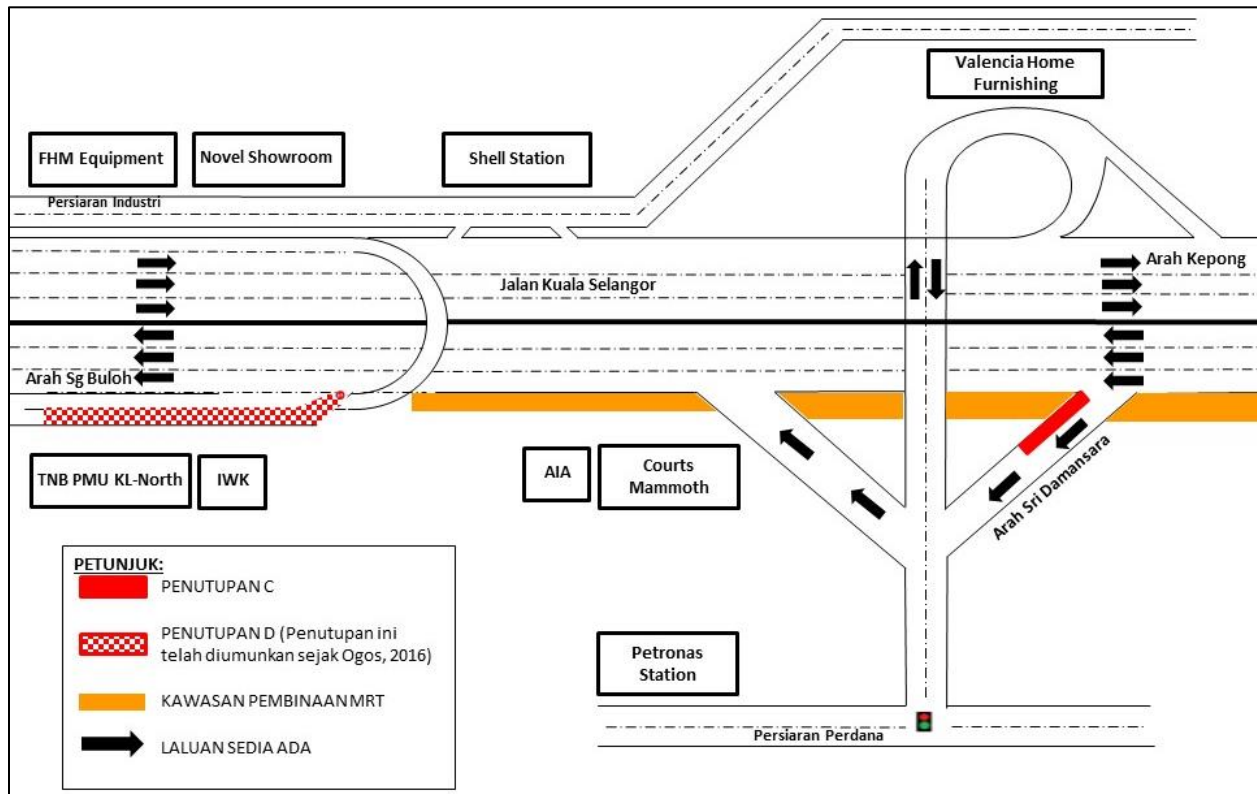


MAP 1(b) : CONTINUATION OF RIGHT LANE CLOSURE AT ACCESS OUT FROM BANDAR SRI DAMANSARA TO JALAN KUALA SELANGOR

Closure C: Partial lane closure at access in to Bandar Sri Damansara from Jalan Kuala Selangor (Sungai Buloh-bound) for a stretch of 80 metres.

There will be only one (1) closure that will be implemented at any one time.

Closure D: This permanent closure was announced in August 2016.



MAP 1(c) : CONTINUATION OF PARTIAL LANE CLOSURE AT ACCESS IN TO BANDAR SRI DAMANSARA FROM JALAN KUALA SELANGOR

For media enquiries, please contact:

Mohd Sofie Hassan
Leanne Ann Susau

Tel: +6019 228 3004
Tel: +603 7493 3832

sofie@sunway.com.my
leanne@mgjv-kvmrt.com.my

MMC GAMUDA KVMRT (PDP SSP) SDN BHD (1117100-V)
Block A, Level 17, Menara Mustapha Kamal, PJ Trade Centre
No 8, Jalan PJU 8/8A, Bandar Damansara Perdana, 47820 Petaling Jaya
Selangor Darul Ehsan, Malaysia
T: +603-7494 2222 F: +603-7727 0222 www.kvmrt.com.my