

PENGUMUMAN TRAFIK

23 JULAI 2018

1. LANJUTAN PENUTUPAN LORONG SEPANJANG JALAN KUALA SELANGOR (ARAH SUNGAI BULOH DAN ARAH KEPONG)

Tarikh	25 Julai 2018 – 22 Ogos 2018
Masa	24 jam; 10:00 malam – 6:00 pagi
Jangka masa	1 bulan
Sebab	Menjalankan kerja-kerja pembinaan cerucuk dan sebarang kerja berkaitan

Harap maklum lanjutan penutupan lorong sepanjang Jalan Kuala Selangor (Arah Sungai Buloh dan Arah Kepong) akan bermula dari **25 Julai 2018 sehingga 22 Ogos 2018 secara berkala**. Pelan pengurusan lalu lintas adalah seperti berikut:

Penutupan A (24 jam):

- i. Penutupan lorong paling kiri Jalan Kuala Selangor (Arah Sungai Buloh) di KM47 sebelum susur masuk ke Sierramas.
- ii. Penutupan lorong paling kiri Jalan Kuala Selangor (Arah Sungai Buloh) selepas susur masuk ke Sierramas sepanjang 100 meter; Penutupan lorong kiri di susur naik menghala ke Sierramas sepanjang 100 meter.
- iii. Penutupan lorong kiri menghala ke Tol Sungai Buloh sepanjang 100 meter.
- iv. Penutupan lorong kiri di susur masuk ke Sierramas dan Sekolah Antarabangsa IGB (Arah Kepong) sepanjang 100 meter.

Penutupan B (24 jam): Penutupan lorong kanan menghala Tol Sungai Buloh sepanjang 100 meter. **Semasa penutupan B Penutupan A (iii) tidak akan berlaku.**

Penutupan C (10 malam – 6 pagi):

- i. Penutupan sebahagian lorong kiri selepas Tol Sungai Buloh sebelum meneruskan perjalanan di Jalan Kuala Selangor (Arah Sungai Buloh) sepanjang 80 meter.
- ii. Penutupan sebahagian lorong kanan selepas Tol Sungai Buloh sebelum meneruskan perjalanan di Jalan Kuala Selangor (Arah Sungai Buloh) sepanjang 80 meter.
- iii. Penutupan sebahagian lorong kanan di susur jalan ke Sierramas sepanjang 50 meter.
- iv. Penutupan sebahagian lorong kiri di susur jalan ke Sierramas sepanjang 50 meter.

Setiap penutupan berikut adalah secara berkala. Sila rujuk peta di bawah untuk maklumat lanjut.

.....

1. CONTINUATION OF LANE CLOSURES ALONG JALAN KUALA SELANGOR (SUNGAI BULOH-BOUND AND KEPONG-BOUND)

Date	25 July 2018 - 22 August 2018
Time	24 hours; 10:00pm – 6:00am
Duration	1 month
Reason	To facilitate pier works and any other related works for MRT construction

There will be a continuation of lane closures along Jalan Kuala Selangor (Sungai Buloh-bound and Kepong-bound) from **25 July 2018 to 22 August 2018, intermittently**. The traffic management plan involves the following closures:

Closure A (24 hours):

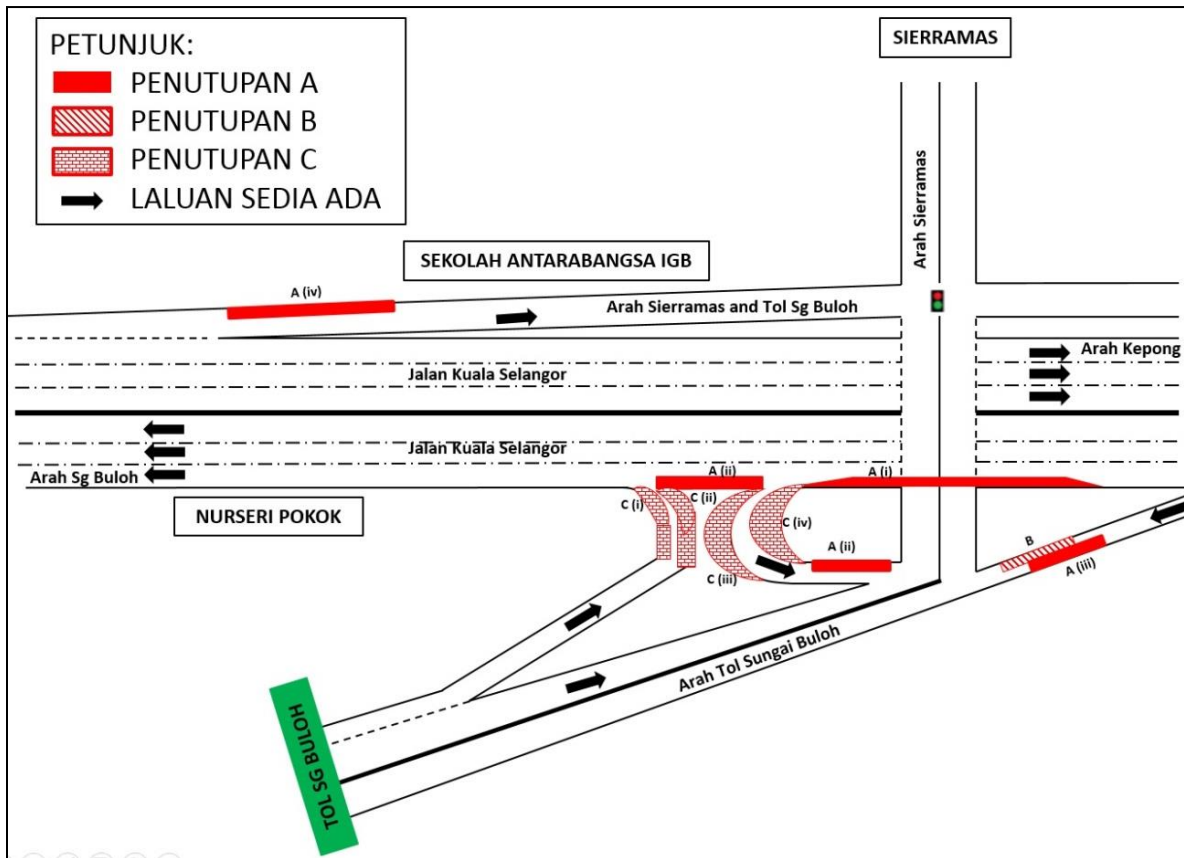
- i. Left-most lane closure along Jalan Kuala Selangor (Sungai Buloh-bound) at KM47 before the ramp up to Sierramas.
- ii. Left-most lane closure along Jalan Kuala Selangor (Sungai Buloh-bound) after the ramp up to Sierramas for a stretch 100 metres; Left lane closure on the ramp up to Sierramas for a stretch 100 metres
- iii. Left lane closure towards Sungai Buloh toll for a stretch of 100 metres.
- iv. Left lane closure on the ramp up to Sierramas and IGB International School (Kepong-bound) for a stretch of 100 metres.

Closure B (24 hours): Right lane closure towards Sungai Buloh toll for a stretch of 100 metres. **During this closure, Closure A (iii) will not take place.**

Closure C (10pm – 6am):

- i. Partial left lane closure after Sungai Buloh toll before joining into Jalan Kuala Selangor (Sungai Buloh-bound) for a stretch of 80 metres.
- ii. Partial right lane closure after Sungai Buloh toll before joining into Jalan Kuala Selangor (Sungai Buloh-bound) for a stretch of 80 metres.
- iii. Partial right lane closure on the ramp up to Sierramas for a stretch 50 metres.
- iv. Partial left lane closure on the ramp up to Sierramas for a stretch of 50 metres.

All the above closures will be implemented intermittently only. Please refer to the map for further reference on the closures.



For media enquiries, please contact:

Mohd Sofie Hassan
Leanne Ann Susau

Tel: +6019 228 3004
Tel: +603 7493 3832

sofie@sunway.com.my
leanne@mgjv-kvmrt.com.my

MMC GAMUDA KVMRT (PDP SSP) SDN BHD (1117100-V)
Block A, Level 17, Menara Mustapha Kamal, PJ Trade Centre
No 8, Jalan PJU 8/8A, Bandar Damansara Perdana, 47820 Petaling Jaya
Selangor Darul Ehsan, Malaysia
T: +603-7494 2222 F: +603-7727 0222 www.mymrt.com.my