

AlloyMtd

NOTICE

PROJEK MASS RAPID TRANSIT LALUAN 2 : SUNGAI BULOH-SERDANG-PUTRAJAYA (SSP) MRT SSP Line Project Activities at Jalan D'Alpinia 10 15 March 2018 - 14 September 2018

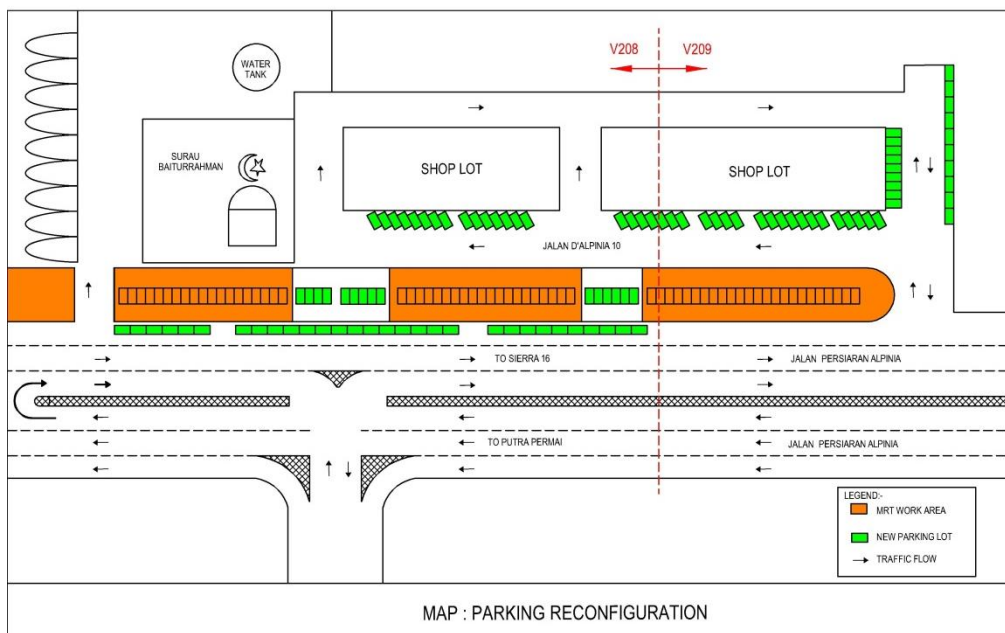
Please be informed that KVMRT SSP Line works will be commencing at Jalan D'Alpinia 10 starting **15 March 2018 until 14 September 2018**.

The closure will be done as follows (please refer to map):

During the closure, reconfiguration of the parking lots will take place as several parking lot will be closed and additional parking lots will be provided to motorist (as indicated in map). The closure is to facilitate the following activities:

- Mobilisation of machineries & Equipment
- Site Clearing
- Bore pile
- Relocation of the services
- Piling works
- Pile cap

Motorist is advise to follow the traffic signs and flow during this period (as indicated in map)



We apologise for any inconvenience caused during this period. Your kind understanding and patience is much appreciated as we are building the MRT SSP Line for our future and to improve KL's public transportation system.

For more information, please contact:

MTD Construction Sdn. Bhd.

En. Mohd Lotfi Abdul Latiff

Senior Manager, PR & Stakeholder Management:

012 – 210 0766

MRT Hotline: 1800 82 6868

www.mymrt.com.my

feedback@mymrt.com.my

WE ARE BUILDING THE MRT SSP LINE FOR OUR FUTURE

THANK YOU

