

**TRAFFIC ANNOUNCEMENT**  
**UPDATES ON TRAFFIC MANAGEMENT PLAN FOR MRT SSP CONSTRUCTION ALONG JALAN**  
**KEPONG (SUNGAI BULOH-BOUND AND JINJANG-BOUND)**  
**12 MARCH 2018**

**1. CONTINUATION OF LANE CLOSURES ALONG JALAN KEPONG (SUNGAI BULOH-BOUND AND JINJANG-BOUND) – METRO PRIMA**

<b>Date</b>	14 March 2018 - 14 June 2018
<b>Time</b>	11pm – 5am; 24 hours
<b>Duration</b>	91 days
<b>Reason</b>	To facilitate utilities detection & relocation, road widening and pier construction for MRT SSP Line

There will be a continuation of lane closures along Jalan Kepong (Sungai Buloh-bound and Jinjang-bound) starting **from 14 March 2018 until 12 June 2018, intermittently**. The traffic management plan involves the following closures:

**Closure A (11pm - 5am)**

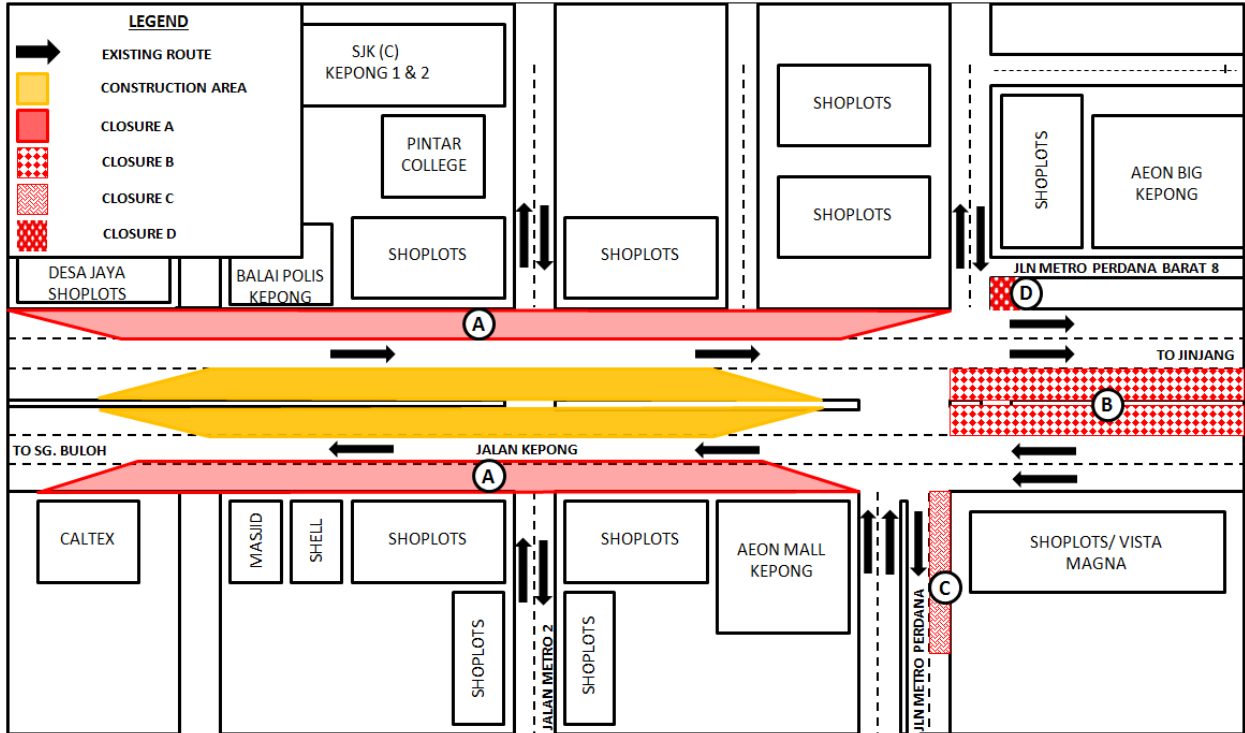
- Left lane closure by stages for a total stretch of 600 metres starting from Sungai Keroh towards Metro Perdana Barat (Jinjang-bound). Each stage will be approximately for 150 metres.
- Left lane closure for a total stretch of 500 metres starting from AEON Jusco Mall until Caltex Pekan Lama Kepong (Sungai Buloh-bound). Each stage will be approximately for 100 metres
- At any one time, there will be **one (1)** lane made available for Jinjang-bound and Sungai Buloh-bound.

**Closure B (11pm - 5am)** – Right lane closure (Jinjang-bound and Sungai Buloh-bound) in front of AEON Big Kepong for a stretch of 200 metres. At any one time, two **(2)** lanes will be made available for **Closure B**.

**Closure C (11pm - 5am)** - Left lane closure after the slip road of Jalan Kepong entering Jalan Metro Perdana for a total stretch of 100 metres (Maluri-bound).

**Closure D (24 hours)** - Permanent slip road closure at Jalan Metro Perdana Barat 8 entering Jalan Besar Kepong (Jinjang - bound). During this closure, motorists need to go straight and turn left (on the road next to the closure) to get to Jalan Kepong (Jinjang-bound)

All closures are implemented **intermittently** and at any one time there will be **only one closure**.



**MAP 1: CONTINUATION OF LANE CLOSURES ALONG JALAN KEPONG (SUNGAI BULOH-BOUND AND JINJANG-BOUND) – METRO PRIMA**

## 2. CONTINUATION OF LANE CLOSURES ALONG JALAN KEPONG (SUNGAI BULOH-BOUND AND JINJANG-BOUND) – JINJANG UTARA

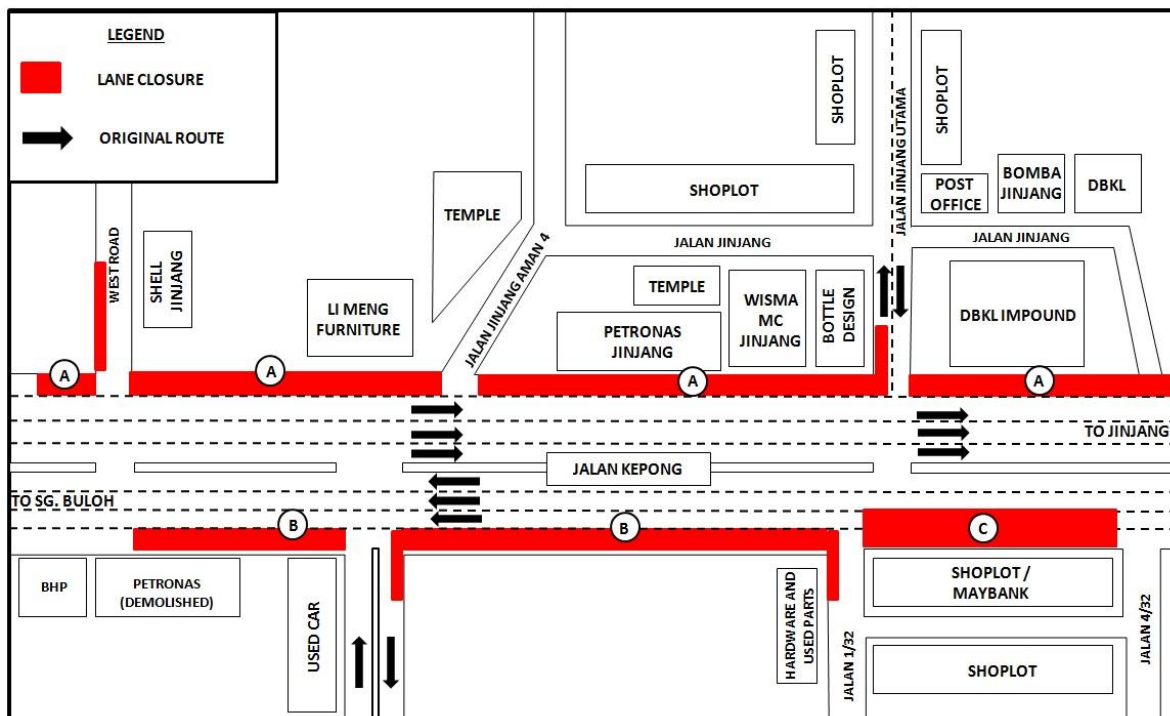
<b>Date</b>	14 March 2018 - 14 June 2018
<b>Time</b>	11pm – 6am
<b>Duration</b>	91 days
<b>Reason</b>	To facilitate utilities detection & relocation works and tree cutting for MRT SSP Line construction works

There will be a continuation of lane closures along Jalan Kepong (Sungai Buloh-bound and Jinjang-bound) starting **from 14 March 2018 until 14 June 2018, 11pm to 6am daily, intermittently**. The traffic management plan involves the following closures:

**Closure A:** Partial lane closure by stages for a total stretch of 600 metres starting from the West Road towards Jalan Jinjang (Jinjang-bound).

**Closure B:** Partial lane closure by stages for a total stretch of 500 metres starting from Jalan 1/32 until BHP Petrol Station (Sungai Buloh-bound).

**Closure C:** Two (2) lanes closure for a total stretch of 150 metres starting from Jalan 4/32 until Jalan 1/32 (Sungai Buloh-bound).



**MAP 2: CONTINUATION OF LANE CLOSURES ALONG JALAN KEPONG (SUNGAI BULOH-BOUND AND JINJANG-BOUND) – JINJANG UTARA**

**For media enquiries, please contact:**

Zaini Ghazali (Item 1-2)

Tel: +6012 328 1821

zainighazali@azrb.com

Leanne Ann Susau (Item 1-2)

Tel: +603 7493 3832

leanne@mgjv-kvmrt.com.my

**MMC GAMUDA KVMRT (PDP SSP) SDN BHD (1117100-V)**

Block A, Level 17, Menara Mustapha Kamal, PJ Trade Centre

No 8, Jalan PJU 8/8A, Bandar Damansara Perdana, 47820 Petaling Jaya

Selangor Darul Ehsan, Malaysia

T: +603-7494 2222 F: +603-7727 0222 [www.mymrt.com.my](http://www.mymrt.com.my)