

TRAFFIC ANNOUNCEMENT

Continuation of Left Lane Closure Along Jalan Besar (LDP-Bound)

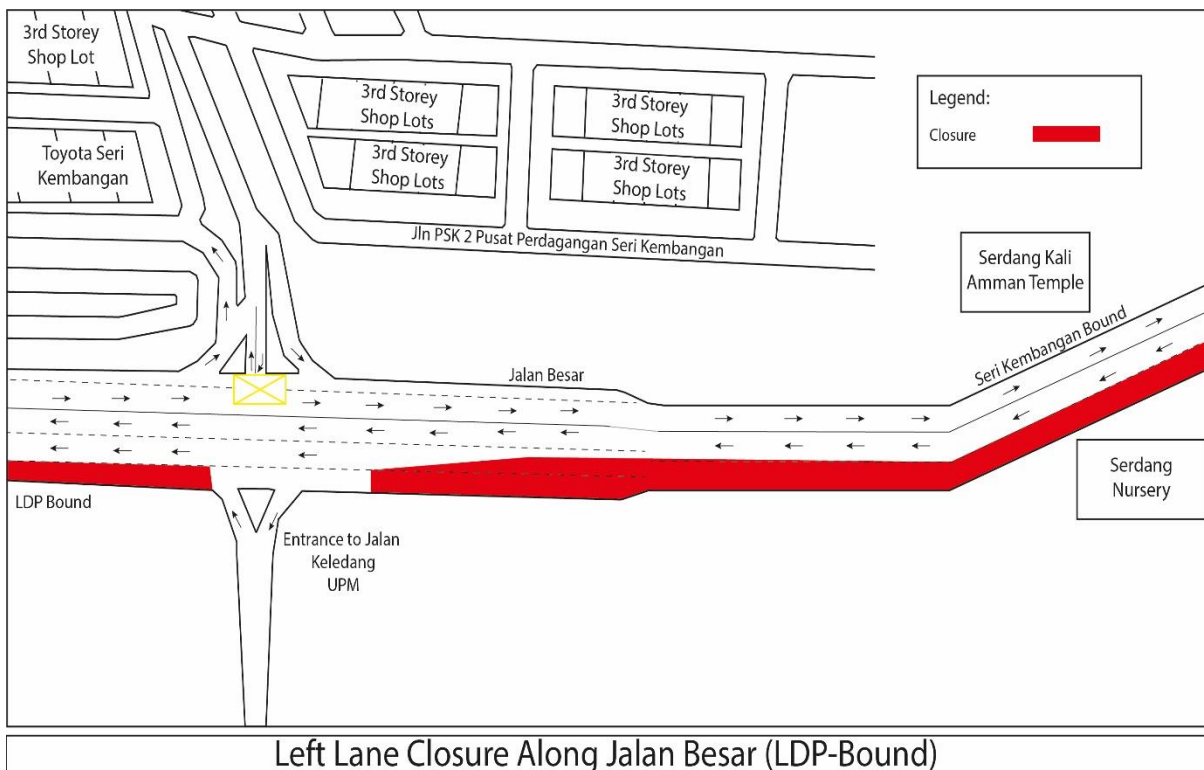
Seri Kembangan

14/03/2018

Date	16 March 2018 - 31 August 2018
Time	24 hours
Duration	6 months
Reason	To facilitate road widening works and any related works

There will be a left lane closure along Jalan Besar (LDP bound) starting **16 March 2018 until 31 August 2018**, 24 hours.

The closure will start from Serdang Nursery along Jalan Besar for a stretch of 600 meters. One lane will be available for motorists heading towards Equine. During the closure, flagman will be placed to control the traffic flow.



Left Lane Closure Along Jalan Besar (LDP-Bound)

