



## NOTICE

### PROJEK MASS RAPID TRANSIT LALUAN 2: SUNGAI BULOH – SERDANG – PUTRAJAYA (SSP)

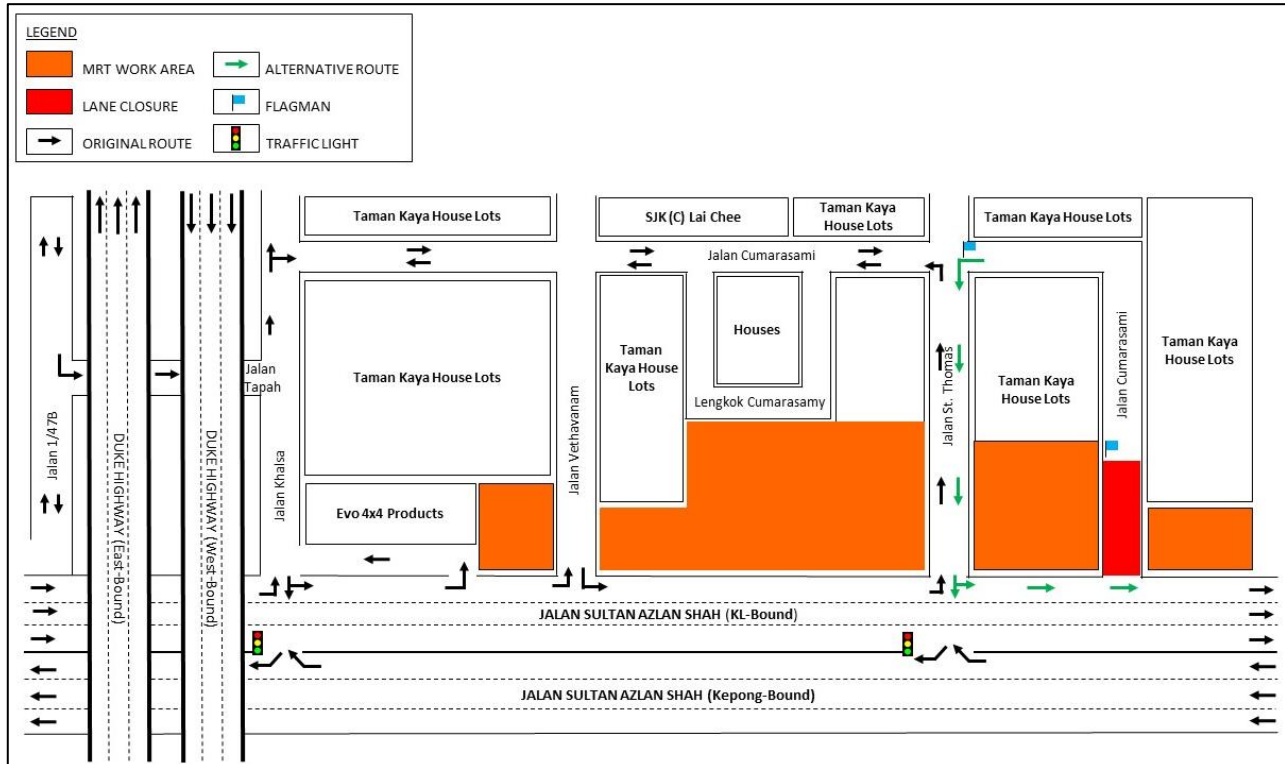
#### MRT SSP Line Project Construction Activities along Jalan Cumarasami, Taman Kaya (02 April 2018 - 23 April 2018)

Please be informed that the KVMRT SSP Line construction activities will continue along Jalan Cumarasami, Taman Kaya starting from **02 April 2018 to 30 April 2018**. The following are the construction activities that will be conducted:

- Utilities relocation
- Any other related works

To facilitate the above mentioned works, there will be an internal road closure along Jalan Cumarasami (beside Taman Kaya housing area) for **24-hours**. During the activities, **motorists heading to Jalan Sultan Azlan Shah (KL-bound) from Jalan Cumarasami** (Taman Kaya) will be directed to turn left into Jalan St. Thomas and turn left again to join Jalan Sultan Azlan Shah (KL-bound), as indicated in **GREEN** arrows in the map. Flagmen will be stationed using the "Stop and Go" method to control the traffic flow.

Please refer to the map for further reference on the closure mentioned above:



We apologise for any inconvenience caused during this period. Your kind understanding and patience is much appreciated as we are building the MRT SSP Line for our future and to improve KL's public transportation system.

For more information, please contact:-

**IJM Construction Sdn. Bhd.**

Juliet Choong Wai Gaik, Senior Manager, PR & Stakeholder Management:

012 – 6010 318

Irynn Eng Poh Ling, Manager, PR & Stakeholder Management:

012 – 2289 270

MRT Hotline: 1800 82 6868

[www.mymrt.com.my](http://www.mymrt.com.my)

[feedback@mymrt.com.my](mailto:feedback@mymrt.com.my)

**WE ARE BUILDING THE MRT SSP LINE FOR OUR FUTURE  
THANK YOU**

