

**TRAFFIC ANNOUNCEMENT  
 UPDATES ON TRAFFIC MANAGEMENT PLAN FOR MRT SSP CONSTRUCTION ALONG  
 JALAN KUALA SELANGOR AND JALAN METRO PERDANA (KEPONG)  
 22 FEBRUARY 2018**

**1. CONTINUATION OF LANE CLOSURES ALONG JALAN KUALA SELANGOR (SUNGAI BULOH-BOUND AND KEPONG-BOUND)**

<b>Date</b>	24 February 2018 – 23 March 2018
<b>Time</b>	24 hours; 10:00pm – 6:00am
<b>Duration</b>	1 month
<b>Reason</b>	To facilitate loading/unloading material, road diversion, piling, pile cap and piers for MRT Construction Works

To facilitate our construction works, there will be continuation of lane closures along Jalan Kuala Selangor (Sungai Buloh-bound and Kepong-bound) from **24 February 2018 to 23 March 2018 (daily), intermittently.**

The traffic management plan involves the following closures:

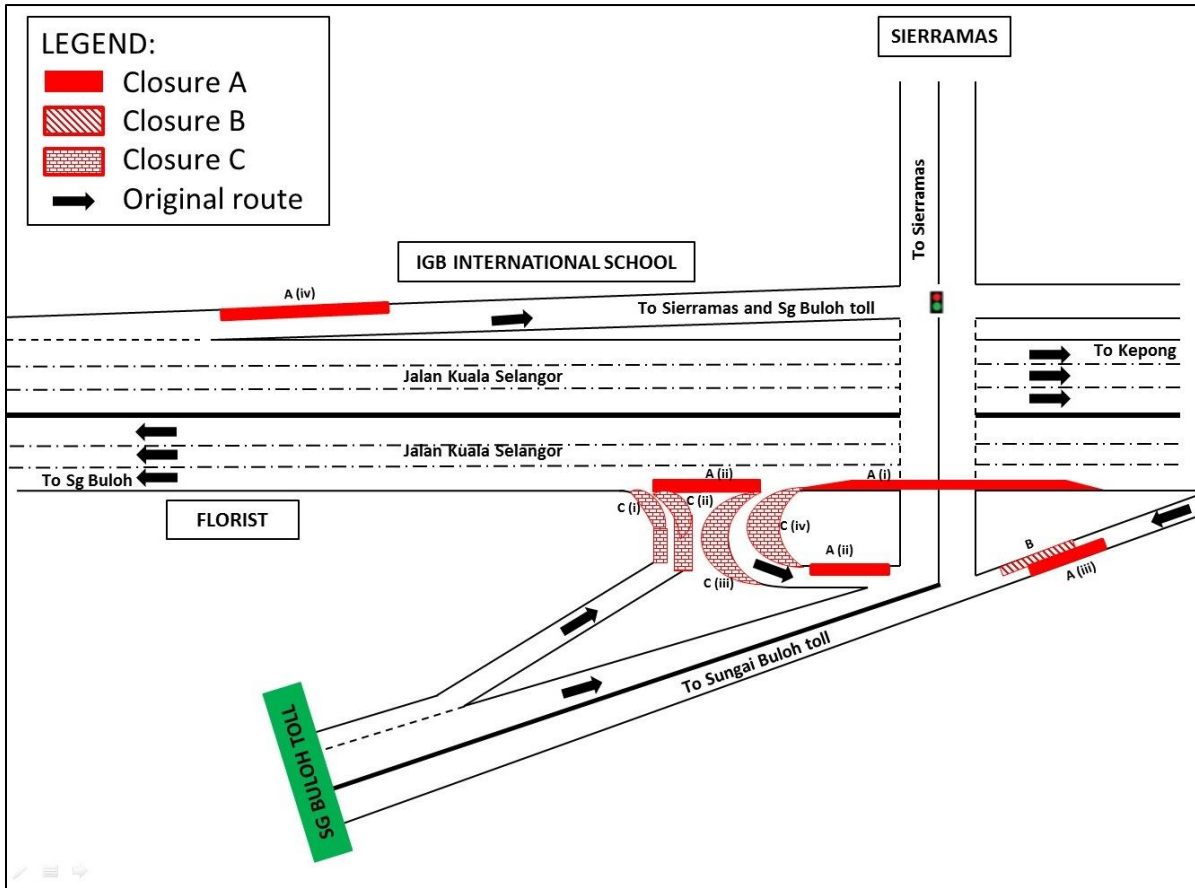
**Closure A (24 hours):**

- i. Left-most lane closure along Jalan Kuala Selangor (Sungai Buloh-bound) at KM47 before the ramp up to Sierramas.
- ii. Left-most lane closure along Jalan Kuala Selangor (Sungai Buloh-bound) after the ramp up to Sierramas for a stretch 100 metres; Left lane closure on the ramp up to Sierramas for a stretch 100 metres
- iii. Left lane closure towards Sungai Buloh toll for a stretch of 100 metres.
- iv. Left lane closure on the ramp up to Sierramas and IGB International School (Kepong-bound) for a stretch of 100 metres.

**Closure B (24 hours):** Right lane closure towards Sungai Buloh toll for a stretch of 100 metres. During this closure, Closure A (iii) will not take place.

**Closure C (10:00pm – 6:00am):**

- i. Partial left lane closure after Sungai Buloh toll before joining into Jalan Kuala Selangor (Sungai Buloh-bound) for a stretch of 80 metres.
- ii. Partial right lane closure after Sungai Buloh toll before joining into Jalan Kuala Selangor (Sungai Buloh-bound) for a stretch of 80 metres.
- iii. Partial right lane closure on the ramp up to Sierramas for a stretch 50 metres.
- iv. Partial left lane closure on the ramp up to Sierramas for a stretch of 50 metres.



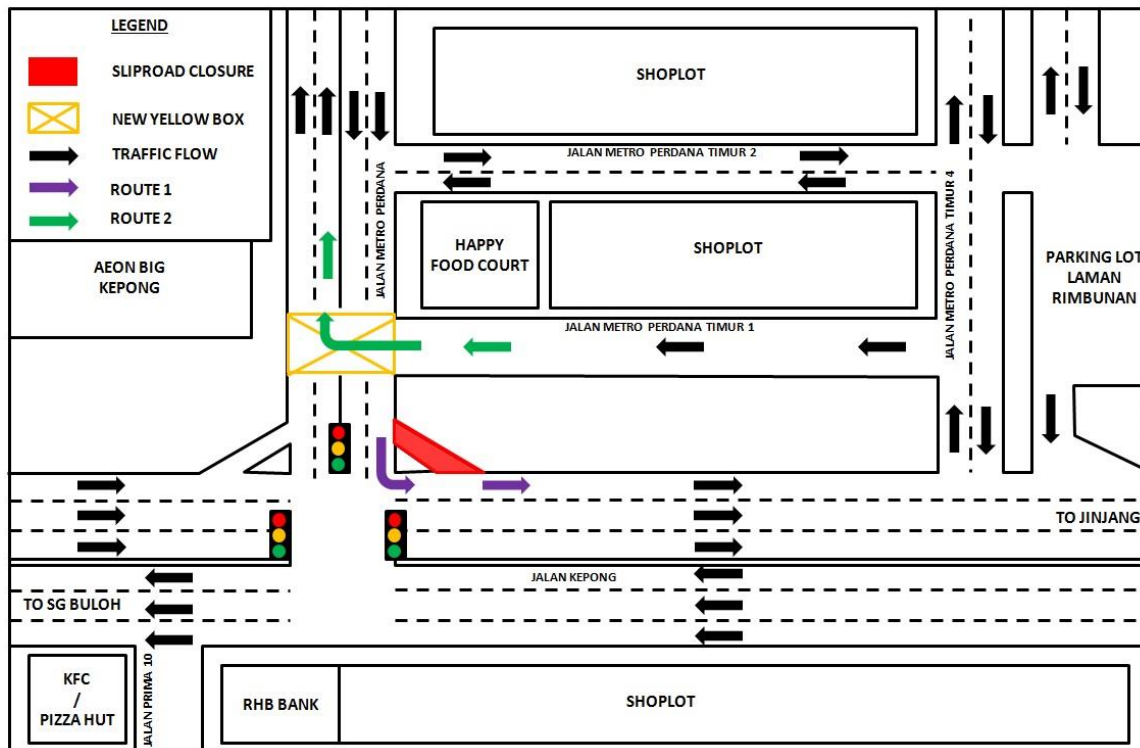
**MAP 1 : CONTINUATION OF LANE CLOSURES ALONG JALAN KUALA SELANGOR (SUNGAI BULOH-BOUND AND KEPONG-BOUND)**

## 2. CONTINUATION OF LONG TERM SLIP ROAD CLOSURE AT JALAN METRO PERDANA, KEPONG (JINJANG-BOUND)

<b>Date</b>	24 February 2018 – 24 February 2019
<b>Time</b>	24 hours
<b>Duration</b>	365 days
<b>Reason</b>	To facilitate MRT piers construction works

There will be a long-term slip road closure of Jalan Metro Perdana (Jinjang-bound) nearby Happy Food Court area starting **from 24 February 2018 until 24 February 2019, for 24 hours daily, intermittently.**

During the slip road closure, motorists can go straight and turn left after the traffic light to get to Jalan Kepong (Jinjang-bound) as indicated by **PURPLE** arrow in the appended map. Yellow box also will be provided for motorists from Jalan Metro Perdana Timur to turn right at Jalan Metro Perdana (to use Jalan Metro Perdana Timur 2 as an alternative route).



**MAP 2 : CONTINUATION OF LONG TERM SLIP ROAD CLOSURE AT JALAN METRO PERDANA, KEPONG (JINJANG-BOUND)**

**For media enquiries, please contact:**

Mohd Sofie Hassan (**Item 1**)

Tel: +6019 228 3004

sofie@sunway.com.my

Zaini Ghazali (**Item 2**)

Tel: +6012 328 1821

zainighazali@azrb.com

Leanne Ann Susau (**Item 1-2**)

Tel: +603 7493 3832

leanne@mgjv-kvmrt.com.my

**MMC GAMUDA KVMRT (PDP SSP) SDN BHD (1117100-V)**  
 Block A, Level 17, Menara Mustapha Kamal, PJ Trade Centre  
 No 8, Jalan PJU 8/8A, Bandar Damansara Perdana, 47820 Petaling Jaya  
 Selangor Darul Ehsan, Malaysia  
 T: +603-7494 2222 F: +603-7727 0222 [www.mymrt.com.my](http://www.mymrt.com.my)