

**TRAFFIC ANNOUNCEMENT**

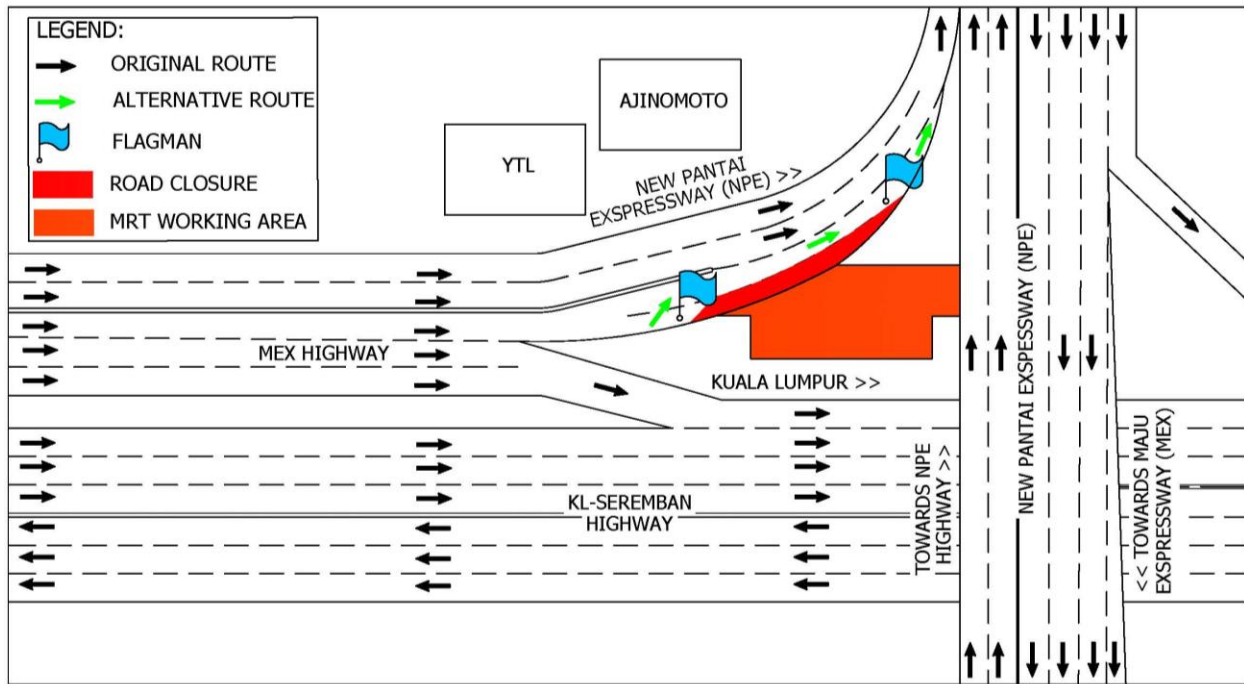
**UPDATES ON TRAFFIC MANAGEMENT PLAN FOR MRT SSP CONSTRUCTION ALONG JALAN KUCHAI LAMA, NEW PANTAI EXPRESSWAY, JALAN DESA, JALAN KUALA SELANGOR & JALAN KUCHING  
23 JANUARY 2018**

**1. CONTINUATION OF RIGHT LANE CLOSURE TOWARDS SLIP ROAD OF JALAN KUCHAI LAMA & NEW PANTAI EXPRESSWAY (NPE) (NORTH-BOUND)**

<b>Date</b>	24 January 2018 - 16 February 2018
<b>Time</b>	10.00am-4.30pm/10.00pm-5.00am
<b>Duration</b>	24 days
<b>Reason</b>	To facilitate the construction access road, site clearance, bore pile work, utilities relocation, sheet pile works and any other related works for MRT construction

There will be a continuation of right lane closure towards the slip road to Jalan Kuchai Lama & New Pantai Expressway (North-bound) **starting from 24 January 2018 until 16 February 2018, 10.00am-4.30pm and 10.00pm-5.00am, intermittently.**

During the closure, one (1) lane will be made available for motorists heading to Jalan Kuchai Lama & New Pantai Expressway. The closure is for a stretch 400 meter and during this closure, flagmen will be placed at both end using 'STOP' and 'GO' traffic flow method.



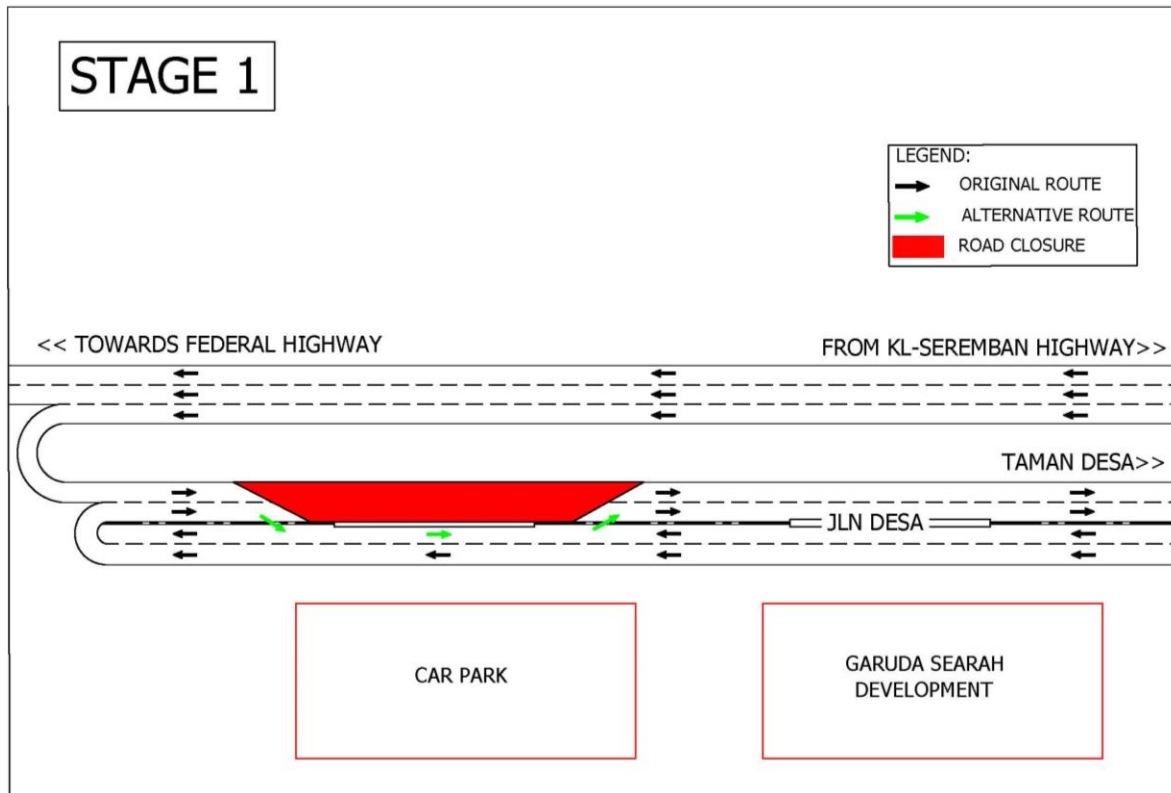
**MAP 1 : CONTINUATION OF RIGHT LANE CLOSURE TOWARDS SLIP ROAD OF JALAN KUCHAI LAMA & NEW PANTAI EXPRESSWAY (NPE) (NORTH-BOUND)**

## 2. FULL BOUND CLOSURE BY STAGES AND CONTRA FLOW ALONG JALAN DESA (SOUTH-BOUND)

<b>Date</b>	24 January 2018 - 23 May 2018
<b>Time</b>	24 hours
<b>Duration</b>	120 days
<b>Reason</b>	To facilitate soil investigation, proof coring work, utilities relocation and any other related works

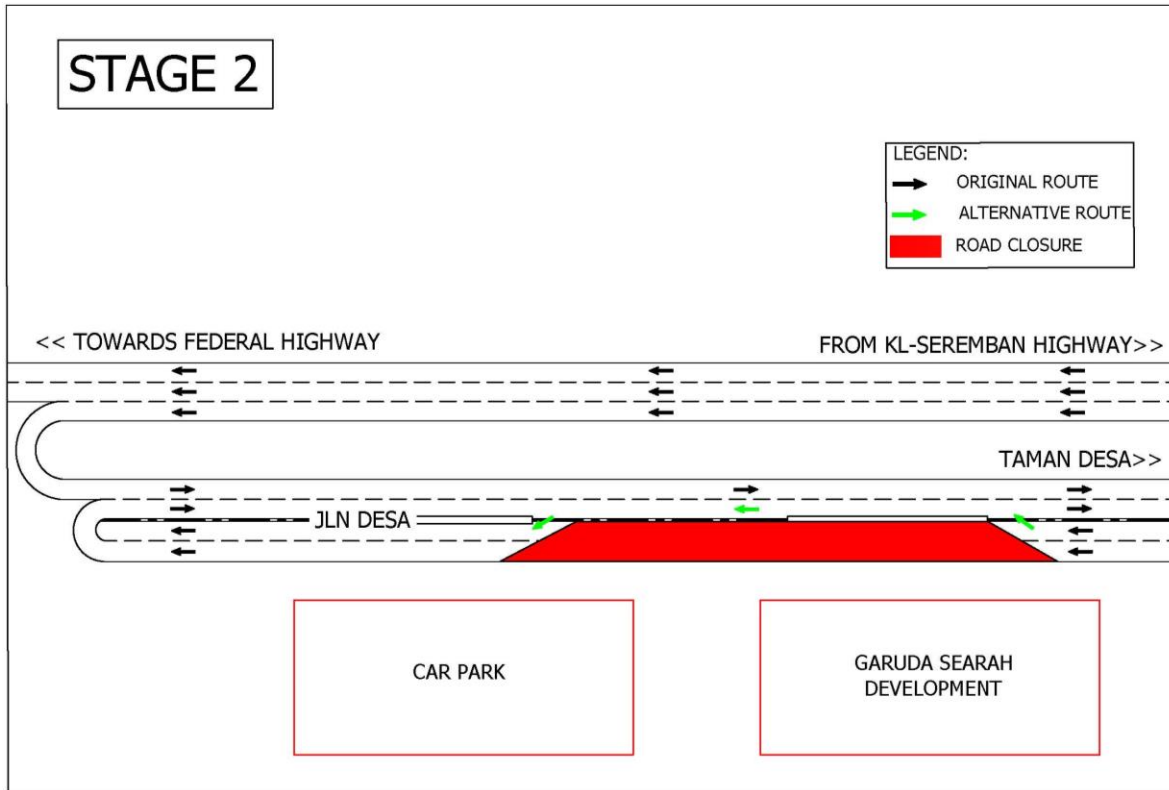
There will be full bound closure for a stretch of 300 metres by stages along Jalan Desa heading towards Taman Desa (South-Bound), **from 24 January 2018 until 23 May 2018, 24 hours, daily**. The traffic management plan involves the following stages:

**Stage 1:** Two (2) lanes closure heading to Taman Desa from Kuala Lumpur-Seremban Highway. During the closure period, contra-flow will be implemented whereby motorists heading to Taman Desa will be diverted to the opposite lane of Jalan Desa (South-bound) as indicated with **GREEN** arrows in the appended map below.



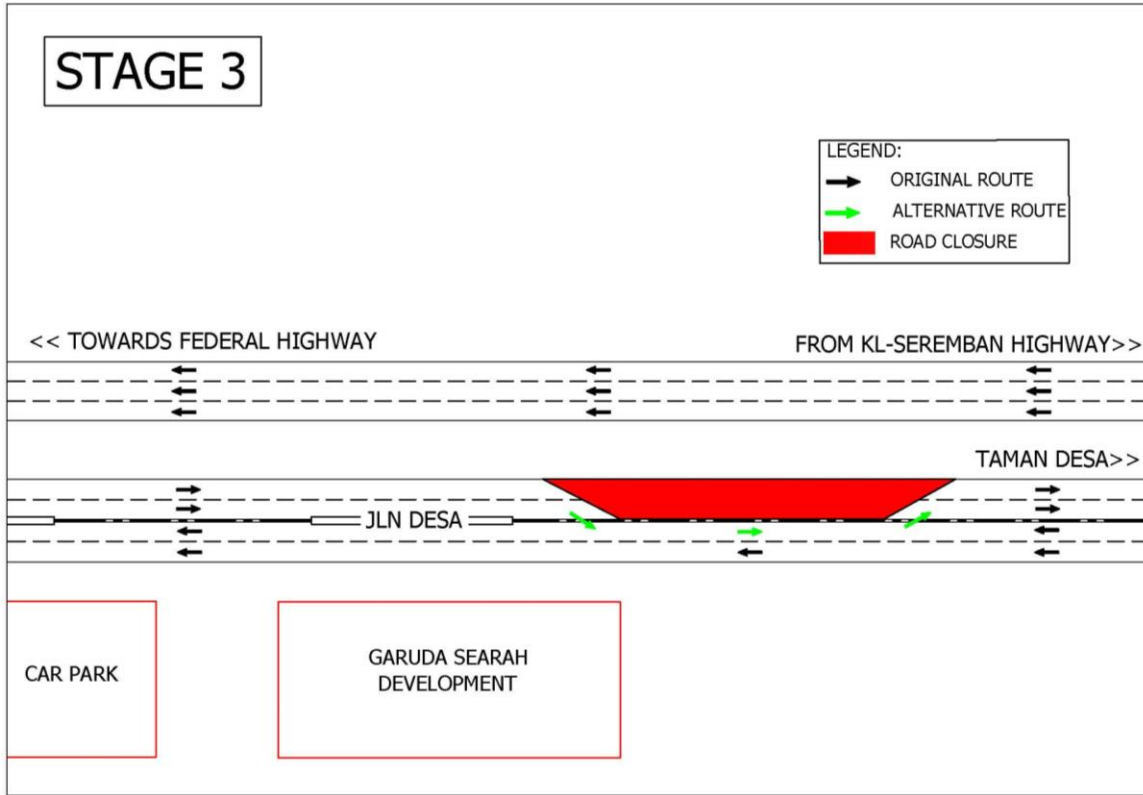
**MAP 2\_STAGE 1 : FULL BOUND CLOSURE BY STAGES AND CONTRA FLOW ALONG JALAN DESA (SOUTH-BOUND)**

**Stage 2** : Two (2) lanes closure heading towards the U-turn to Taman Desa. During the closure period, contra-flow will be implemented whereby motorists heading to Taman Desa will be diverted to the opposite lane of Jalan Desa (North-bound) as indicated with **GREEN** arrows in the appended map below.



**MAP 2\_STAGE 2 : FULL BOUND CLOSURE BY STAGES AND CONTRA FLOW ALONG JALAN DESA (SOUTH-BOUND)**

**Stage 3** : Two (2) lanes closure heading to Taman Desa from Kuala Lumpur-Seremban Highway. During the closure period, contra-flow will be implemented whereby motorists heading to Taman Desa will be diverted to the opposite lane of Jalan Desa (South-bound) as indicated with **GREEN** arrows in the appended map below.



**MAP 2\_STAGE 3 : FULL BOUND CLOSURE BY STAGES AND CONTRA FLOW ALONG JALAN DESA (SOUTH-BOUND)**

### 3. CONTINUATION OF LANE CLOSURES ALONG JALAN KUALA SELANGOR (SUNGAI BULOH-BOUND AND KEPONG-BOUND)

<b>Date</b>	24 January 2018 - 23 February 2018
<b>Time</b>	24 hours; 10:00pm – 6:00am
<b>Duration</b>	1 month
<b>Reason</b>	To facilitate loading/unloading material and open guard rail, site clearing and tree cutting, mapping and piloting, utilities relocation, temporary works - sheet pile and earth work, soil investigation, road widening and diversion, piling and pile cap, 33kV TNB cable relocation for MRT construction works

To facilitate our construction works, there will be continuation of lane closures along Jalan Kuala Selangor (Sungai Buloh-bound and Kepong-bound) from **24 January 2018 to 23 February 2018, intermittently.**

The traffic management plan involves the following closures:

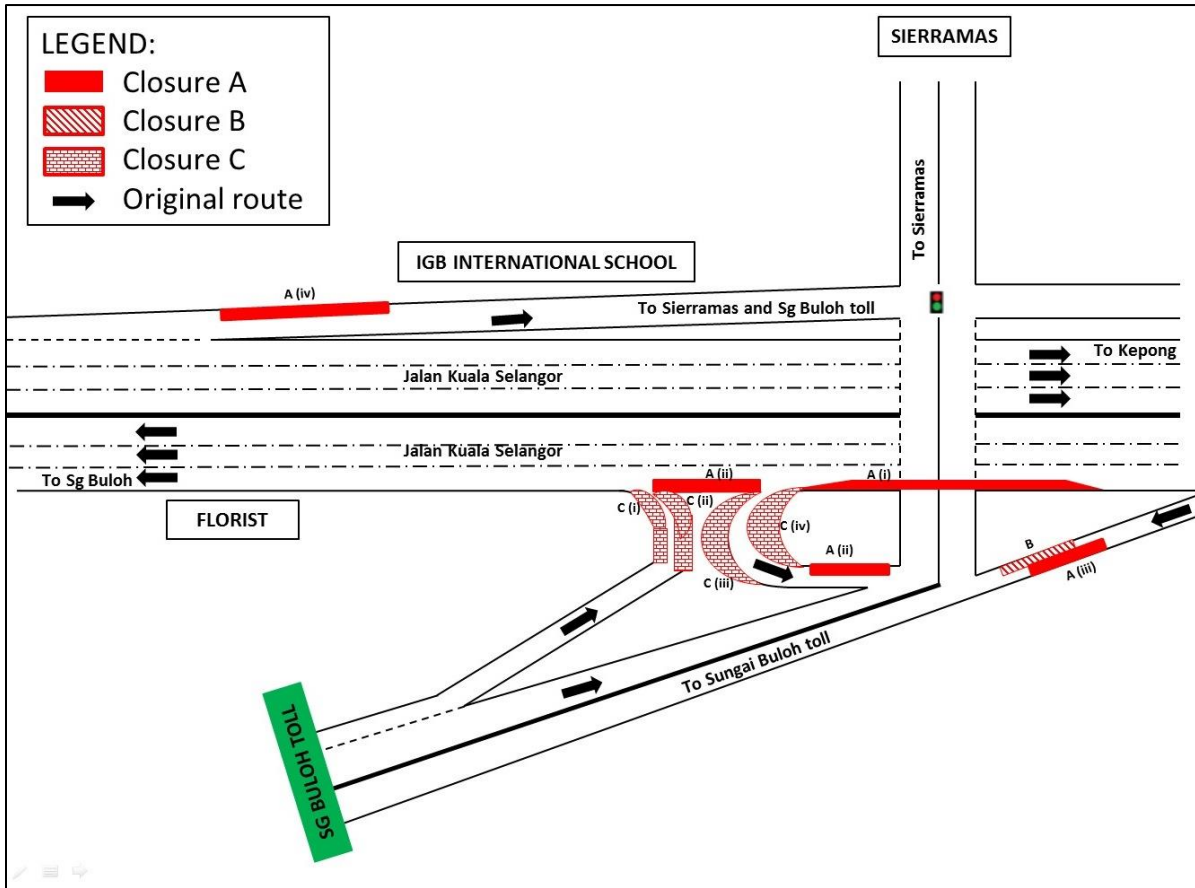
#### **Closure A (24 hours):**

- i. Left-most lane closure along Jalan Kuala Selangor (Sungai Buloh-bound) at KM47 before the ramp up to Sierramas.
- ii. Left-most lane closure along Jalan Kuala Selangor (Sungai Buloh-bound) after the ramp up to Sierramas for a stretch 100 metres; Left lane closure on the ramp up to Sierramas for a stretch 100 metres
- iii. Left lane closure towards Sungai Buloh toll for a stretch of 100 metres.
- iv. Left lane closure on the ramp up to Sierramas and IGB International School (Kepong-bound) for a stretch of 100 metres.

**Closure B (24 hours):** Right lane closure towards Sungai Buloh toll for a stretch of 100 metres. During this closure, Closure A (iii) will not take place.

#### **Closure C (10pm – 6am):**

- i. Partial left lane closure after Sungai Buloh toll before joining into Jalan Kuala Selangor (Sungai Buloh-bound) for a stretch of 80 metres.
- ii. Partial right lane closure after Sungai Buloh toll before joining into Jalan Kuala Selangor (Sungai Buloh-bound) for a stretch of 80 metres.
- iii. Partial right lane closure on the ramp up to Sierramas for a stretch 50 metres.
- iv. Partial left lane closure on the ramp up to Sierramas for a stretch of 50 metres.



**MAP 3 : CONTINUATION OF LANE CLOSURES ALONG JALAN KUALA SELANGOR (SUNGAI BULOH-BOUND AND KEPONG-BOUND)**

**4. CONTINUATION OF NIGHT LANE CLOSURES ALONG JALAN KUCHING & SLIP ROAD OPPOSITE SEKOLAH MENENGAH KEBANGSAAN DATO' IBRAHIM YAACOB (JALAN KUCHING)**

<b>Date</b>	24 January 2018 - 18 April 2018
<b>Time</b>	10:00pm – 6:00am
<b>Duration</b>	3 months
<b>Reason</b>	To facilitate loading/unloading material, site clearing and tree cutting, piloting, utilities relocation, soil investigation, slip road realignment, bore piling works and any other related works to MRT construction works.

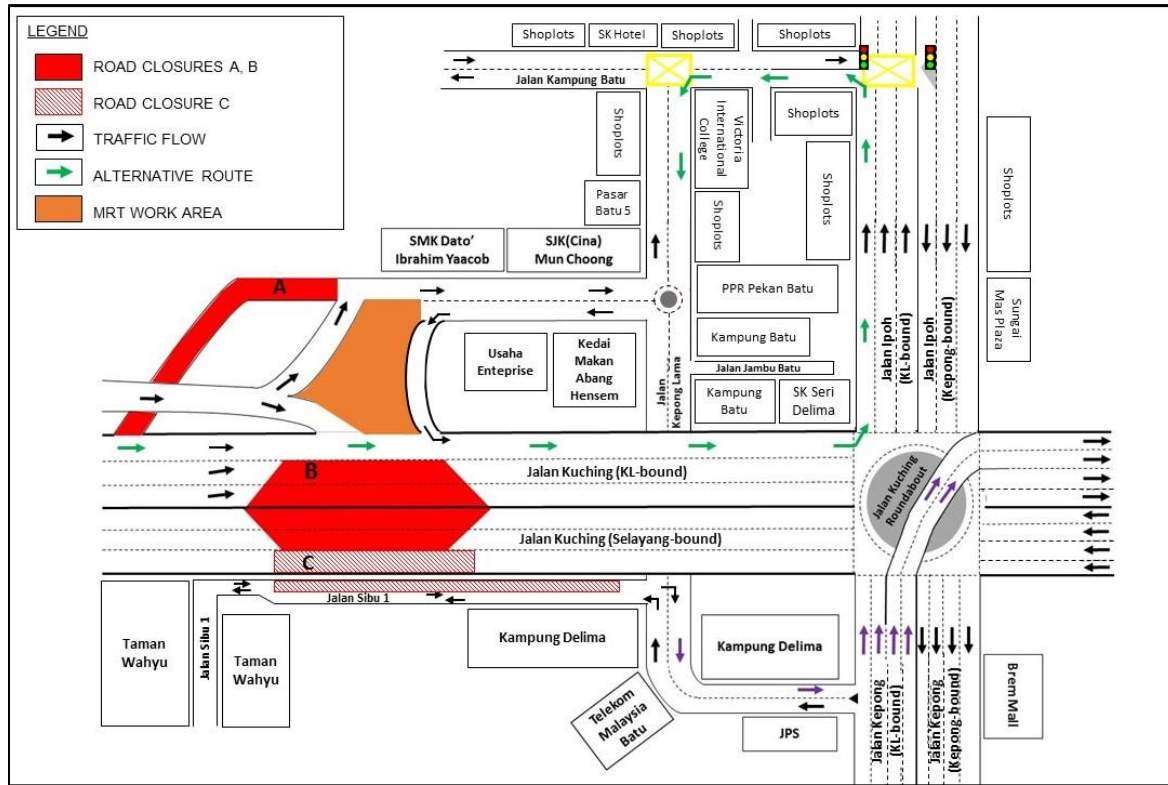
There will be a continuation of night lane closures along Jalan Kuching, Jalan Sibul 1 & slip road opposite Sekolah Menengah Kebangsaan Dato' Ibrahim Yaacob beginning from **24 January 2018 to 18 April 2018, 10pm – 6am, intermittently.**

The traffic management plan involves the following closures:

**Closure A:** Slip road closure heading to Sekolah Menengah Kebangsaan Dato' Ibrahim Yaacob from Jalan Kuching (KL-bound). During the closure, motorist will have to head straight to Jalan Kuching roundabout and take the first exit to Jalan Ipoh (KL-bound). Motorist then need to turn left at the traffic light to Jalan Kampung Batu, followed by another left turn after Victoria International College, heading towards Jalan Kepong Lama, as indicated by **GREEN** arrows in the map.

**Closure B:** Median lane and fast lane closure along Jalan Kuching (KL-bound & Selayang-bound) for a stretch of 180 metres. This closure is temporary and at any one time there will be one (1) lane available for motorists.

**Closure C:** Slow lane closure along Jalan Kuching (Selayang-bound) and partial road closure along Jalan Sibul 1 for a stretch of 180 metres. This closure is temporary and at any one time there will be one (1) lane available for motorists.



**MAP 4 : CONTINUATION OF NIGHT LANE CLOSURES ALONG JALAN KUCHING & SLIP ROAD OPPOSITE SEKOLAH MENENGAH KEBANGSAAN DATO' IBRAHIM YAACOB (JALAN KUCHING)**

**For media enquiries, please contact:**

Anizam bin Ali (Item 1-2)

Mohd Sofie Hassan (Item 3)

Juliet Choong Wai Gaik (Item 4)

Leanne Ann Susau (Item 1-4)

Tel: +6016 322 1486

Tel: +6019 228 3004

Tel: +6012 601 0318

Tel: +603 7493 3832

anizam.ali@wct.my

sofie@sunway.com.my

julietchoong@ijm.com

leanne@mgjv-kvmrt.com.my