

**TRAFFIC ANNOUNCEMENT**  
**UPDATES ON TRAFFIC MANAGEMENT PLAN FOR MRT SSP CONSTRUCTION ALONG PRIMA**  
**DAMANSARA AND JALAN KUALA SELANGOR**  
**30 JANUARY 2018**

**1. CONTINUATION OF LANE CLOSURES ALONG JALAN PJU10/9 AND JALAN PJU10/9A (PRIMA DAMANSARA)**

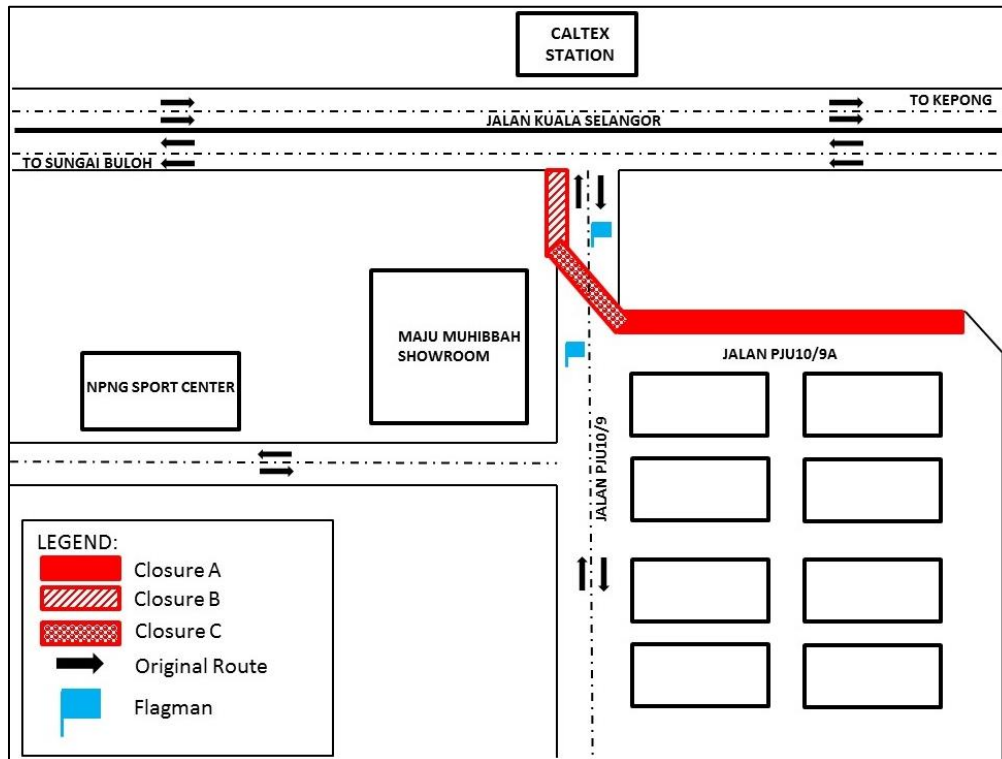
<b>Date</b>	01 February 2018 - 14 March 2018
<b>Time</b>	8AM-6PM; 10PM-6AM
<b>Duration</b>	42 days
<b>Reason</b>	To facilitate road works for MRT construction works

There will be a long term lane closures along **Jalan PJU10/9 and Jalan PJU10/9A** from **01 February 2018 until 14 March 2018 (daily except Tuesdays)**. The traffic management plan involves the following closures:

**Closure A (8am-6pm):** One lane of Jalan PJU10/9A will be closed for a stretch of approximately 100 metres during the day.

**Closure B (10pm-6am):** The edge of the road along Jalan PJU10/9 fronting Maju Muhibbah Showroom will be closed.

**Closure C (10pm-6am):** Jalan PJU10/9 will be closed diagonally stretching both lanes for approximately 100 metres daily. During the closure, motorists will be diverted to the opposite lane using "STOP" and "GO" method of traffic flow.



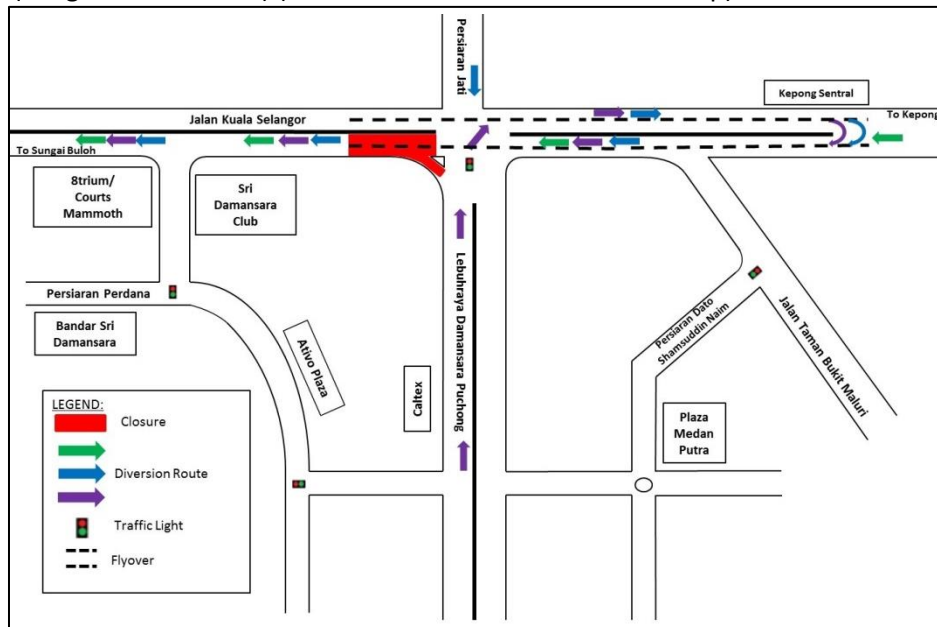
**MAP 1 : CONTINUATION OF LANE CLOSURES ALONG JALAN PJU10/9 AND JALAN PJU10/9A (PRIMA DAMANSARA)**

## 2. CONTINUATION OF SLIP ROAD CLOSURE TO JALAN KUALA SELANGOR FROM LEBUHRAYA DAMANSARAPUCHONG (SUNGAI BULOH-BOUND)

<b>Date</b>	01 February 2018 - 28 February 2018
<b>Time</b>	10:00PM – 6:00AM
<b>Duration</b>	1 month
<b>Reason</b>	To survey work, bored piling work, pile cap & pier for MRT construction works

There will be a continuation of slip road closure to Jalan Kuala Selangor from Lebuhraya Damansara Puchong (LDP) from **1 February 2018 – 28 February 2018, 10:00PM – 6:00AM daily**. During the closure, the following diversions will take place:

- **Motorists from LDP heading to Sungai Buloh** can turn right at the LDP/DUKE 2 Interchange traffic light to connect to Jalan Kuala Selangor (Kepong-bound) and make a U-Turn after Kepong Sentral KTM Station underneath the MRR2 flyover before joining the ramp up to Jalan Kuala Selangor (Sungai Buloh-bound) (as indicated in **PURPLE** arrows in map).
- **Motorists from Persiaran Jati heading to Sungai Buloh** will be diverted to turn left to Jalan Kuala Selangor (Kepong-bound) and then make a U-Turn after Kepong Sentral KTM Station underneath the MRR2 flyover before joining the ramp up to Jalan Kuala Selangor (Sungai Buloh-bound) (as indicated in **BLUE** arrows in map).
- **Motorists from Kepong heading to Sungai Buloh** are advised to use the ramp up to Jalan Kuala Selangor (Sungai Buloh-bound) (as indicated in **GREEN** arrows in map).



**MAP 2 : CONTINUATION OF SLIP ROAD CLOSURE TO JALAN KUALA SELANGOR FROM LEBUHRAYA DAMANSARAPUCHONG (SUNGAI BULOH-BOUND)**

**For media enquiries, please contact:**

Mohd Sofie Hassan  
Leanne Ann Susau

Tel: +6019 228 3004  
Tel: +603 7493 3832

sofie@sunway.com.my  
leanne@mgjv-kvmrt.com.my

MMC GAMUDA KVMRT (PDP SSP) SDN BHD (1117100-V)  
Block A, Level 17, Menara Mustapha Kamal, PJ Trade Centre  
No 8, Jalan PJU 8/8A, Bandar Damansara Perdana, 47820 Petaling Jaya  
Selangor Darul Ehsan, Malaysia  
T: +603-7494 2222 F: +603-7727 0222 [www.mymrt.com.my](http://www.mymrt.com.my)