

AlloyMtd

NOTICE

PROJEK MASS RAPID TRANSIT LALUAN 2 : SUNGAI BULOH-SERDANG-PUTRAJAYA (SSP)

MRT SSP Line Project Activities at Part of Jalan Persiaran Alpina Towards Sierra 16 22 January 2018 - 31 January 2018

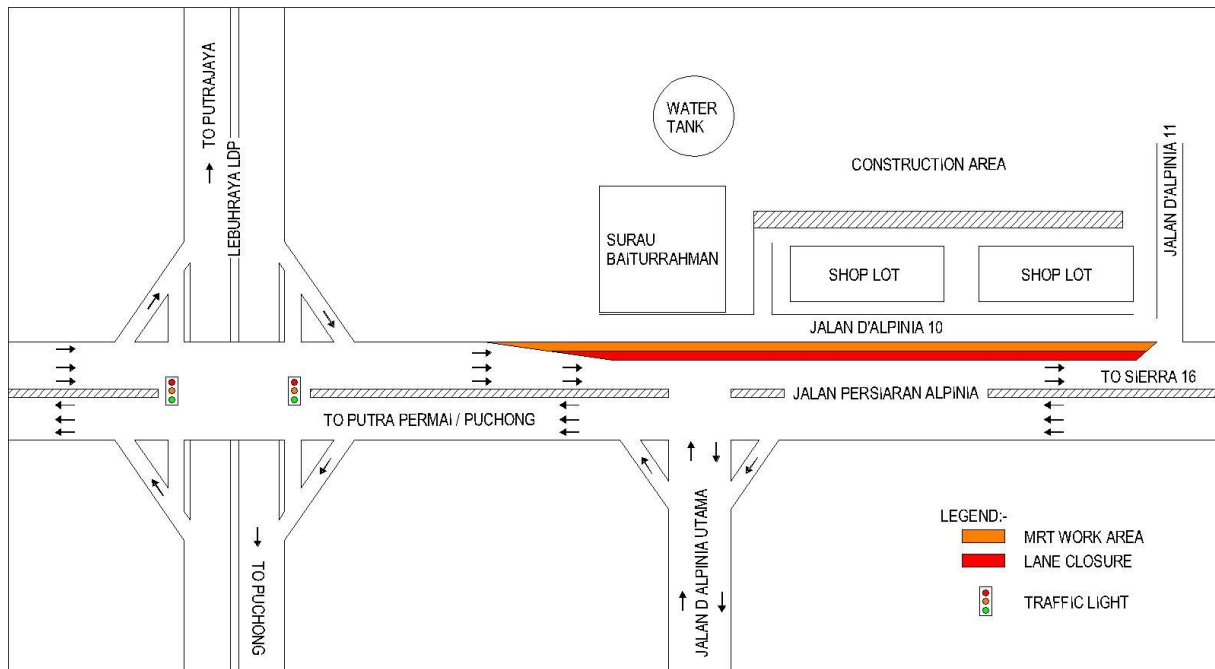
Please be informed that KVMRT SSP Line works will be commencing at Jalan Persiaran Alpina towards Sierra 16 starting **22 January 2018 until 31 January 2018**. The 200 meter closure on the left-most lane along Persiaran Alpina heading towards Sierra 16 is to facilitate the following activities; the relocation of water wipe and other related works in the area.

Duration of works:

Monday - Saturday

(7.00AM - 7.00PM) Normal construction activities

(7.00PM – 6.00AM) Certain construction activities that require night works (subject to authorities approval)



We apologise for any inconvenience caused during this period. Your kind understanding and patience is much appreciated as we are building the MRT SSP Line for our future and to improve KL's public transportation system.

For more information, please contact:
MTD Construction Sdn. Bhd.

For media enquiries, please contact:

Mohd Lotfi Abdul Latiff

Tel: + 6012 2100 766

Mlotfi@V208.com.my

MRT Hotline: 1800 82 6868

www.mymrt.com.my

feedback@mymrt.com.my

WE ARE BUILDING THE MRT SSP LINE FOR OUR FUTURE

THANK YOU

