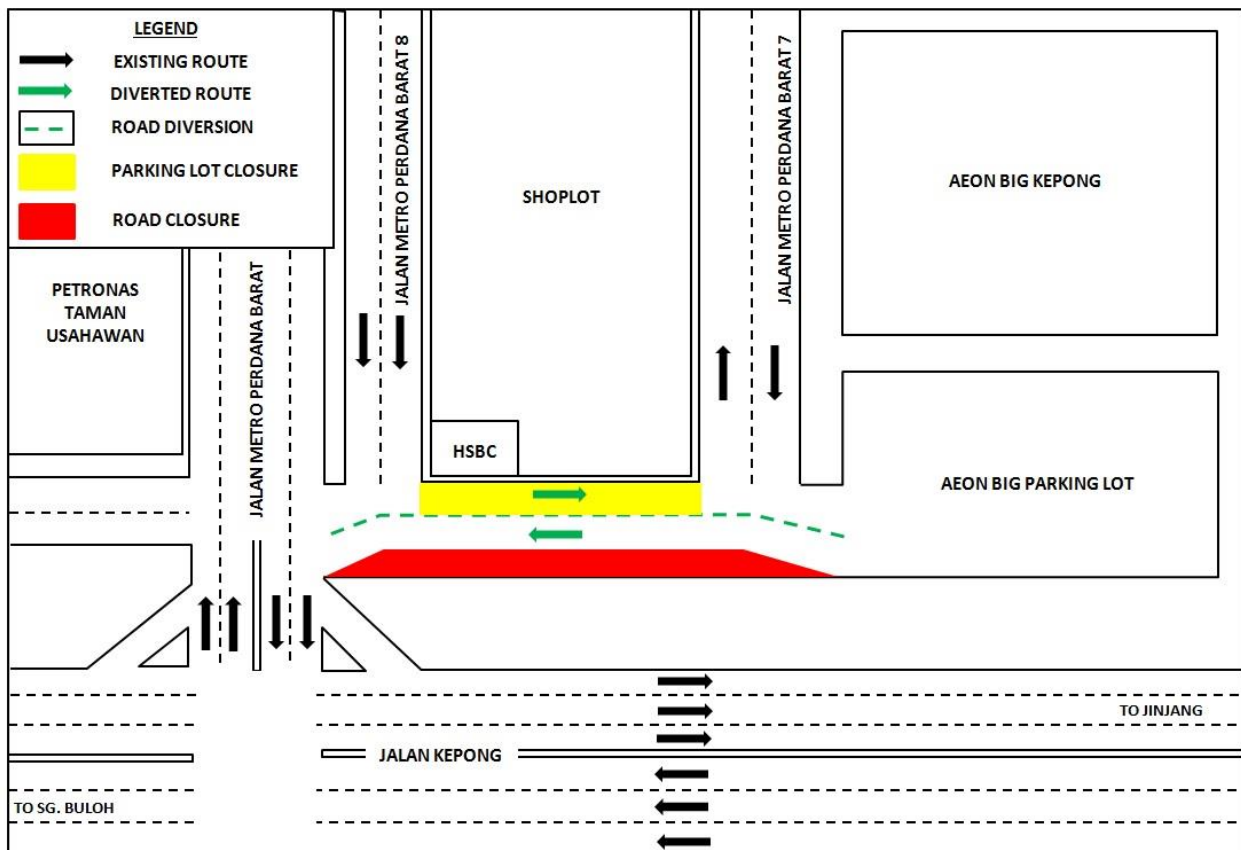


**NOTICE**  
**PROJEK MASS RAPID TRANSIT LALUAN 2 SUNGAI BULOH – SERDANG –  
PUTRAJAYA (SSP)**

**LANE CLOSURE AND TRAFFIC DIVERSION ALONG JALAN METRO PERDANA BARAT  
(18 December 2017 – 27 February 2018)**

There will be a lane closure (75 metres) along Jalan Metro Perdana Barat 8 (in front of HSBC Kepong) starting from **18 December 2017 until 27 February 2018, 24 hours daily**. During this closure, the existing parking lots in front of HSBC Kepong will be closed for road diversion in order to maintain two (2) lanes of traffic flow (appended as the green arrows and lanes).



We apologize for any inconvenience caused during this period. Your kind understanding and patience is much appreciated as we are building the MRT SSP Line for our future and to improve KL's public transportation system.

For more information, please contact:-

**Ahmad Zaki Sdn Bhd**

En. Zaini Ghazali, Senior Manager, PR & Stakeholder Management:

+6012 – 328 1821

En. Rashid Ramli, Manager, PR & Stakeholder Management:

+6012 – 625 9738

MRT Hotline: 1800 82 6868

[www.mymrt.com.my](http://www.mymrt.com.my)

[feedback@mymrt.com.my](mailto:feedback@mymrt.com.my)

**WE ARE BUILDING THE MRT SSP LINE FOR OUR FUTURE  
THANK YOU**

