



NOTICE

PROJEK MASS RAPID TRANSIT LALUAN 2: SUNGAI BULOH – SERDANG – PUTRAJAYA (SSP)

MRT SSP Line Project Construction Activities Along Jalan Sultan Azlan Shah (KL-bound) nearby Sekolah Kebangsaan Kampung Batu (03 December 2017 – 25 February 2018)

Please be informed that the KVMRT SSP Line construction works will continue from CIMB to Chai & Chai Trading along Jalan Sultan Azlan Shah (KL-bound) starting from **03 December 2017 to 25 February 2018**. The following are the construction activities that will be conducted:

- Utilities relocation
- Any other related works

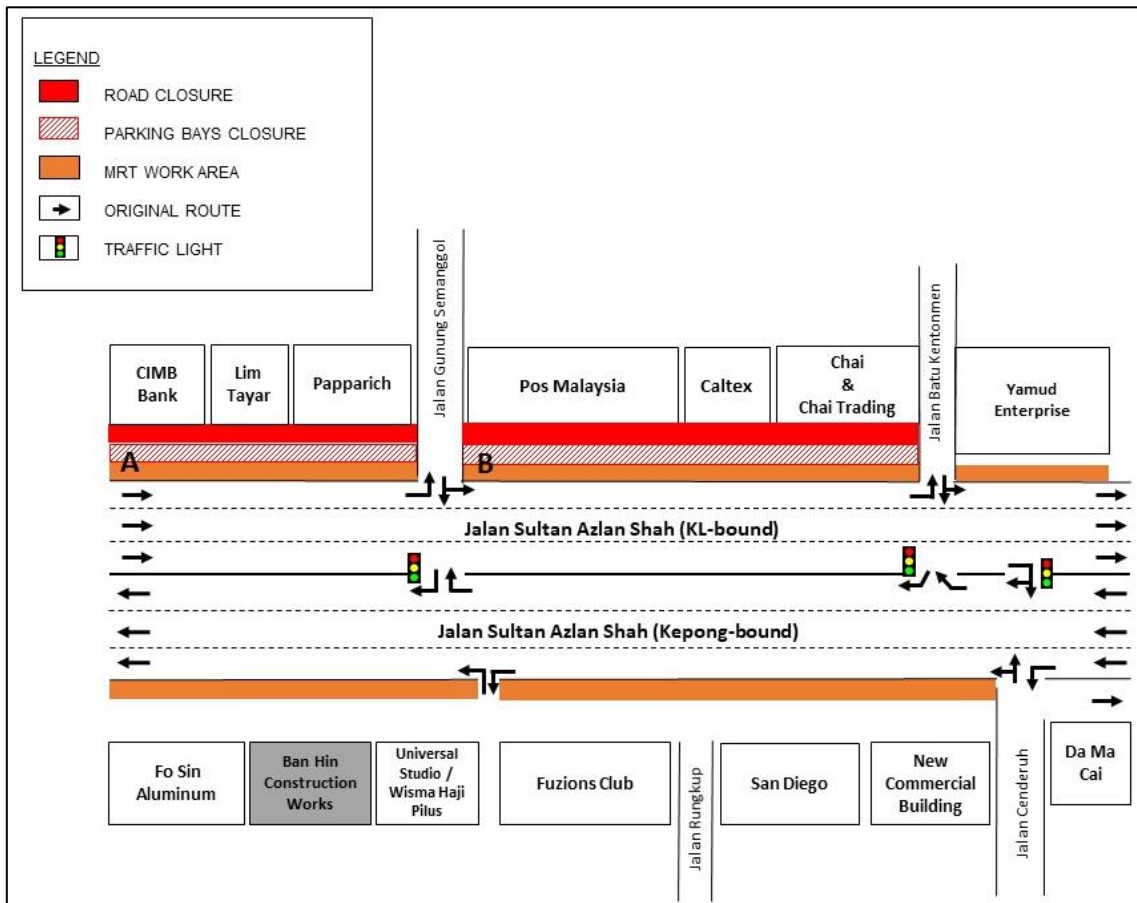
To facilitate the above mentioned works, the internal road and parking bays will be closed by stages from **8am – 5pm intermittently, only on SUNDAYS**. Meanwhile, the road curb will be closed **24-hours** during this period.

The stages of construction activities include:

Closure A: Jalan Sultan Azlan Shah (KL-bound): Road shoulder, the internal road & parking bays closure starting from CIMB bank until Papparich (before Jalan Gunung Semanggol).

Closure B: Jalan Sultan Azlan Shah (KL-bound): Road shoulder, internal road & parking bays closure starting from Pos Malaysia (after Jalan Gunung Semanggol) to Chai & Chai Trading (before Jalan Batu Kentonmen).

Below is the map for further reference on the closure as mentioned above:



We apologise for any inconvenience caused during this period. Your kind understanding and patience is much appreciated as we are building the MRT SSP Line for our future and to improve KL's public transportation system.

For more information, please contact:-

IJM Construction Sdn. Bhd.

Juliet Choong Wai Gaik, Senior Manager, PR & Stakeholder Management:

012 – 6010 318

Irynn Eng Poh Ling, Manager, PR & Stakeholder Management:

012 – 2289 270

MRT Hotline: 1800 82 6868

www.mymrt.com.my

feedback@mymrt.com.my

**WE ARE BUILDING THE MRT SSP LINE FOR OUR FUTURE
THANK YOU**

