

TRAFFIC ANNOUNCEMENT
UPDATES ON TRAFFIC MANAGEMENT PLAN FOR MRT CONSTRUCTION
AT CHERAS KAJANG HIGHWAY (KAJANG AND KUALA LUMPUR BOUND)
21 NOVEMBER 2017

1. CONTINUATION OF LANE CLOSURE AT KM 14.0 UNTIL KM 15.5 AT CHERAS KAJANG HIGHWAY (KAJANG AND KUALA LUMPUR BOUND) (INTERMITTENT CLOSURE)

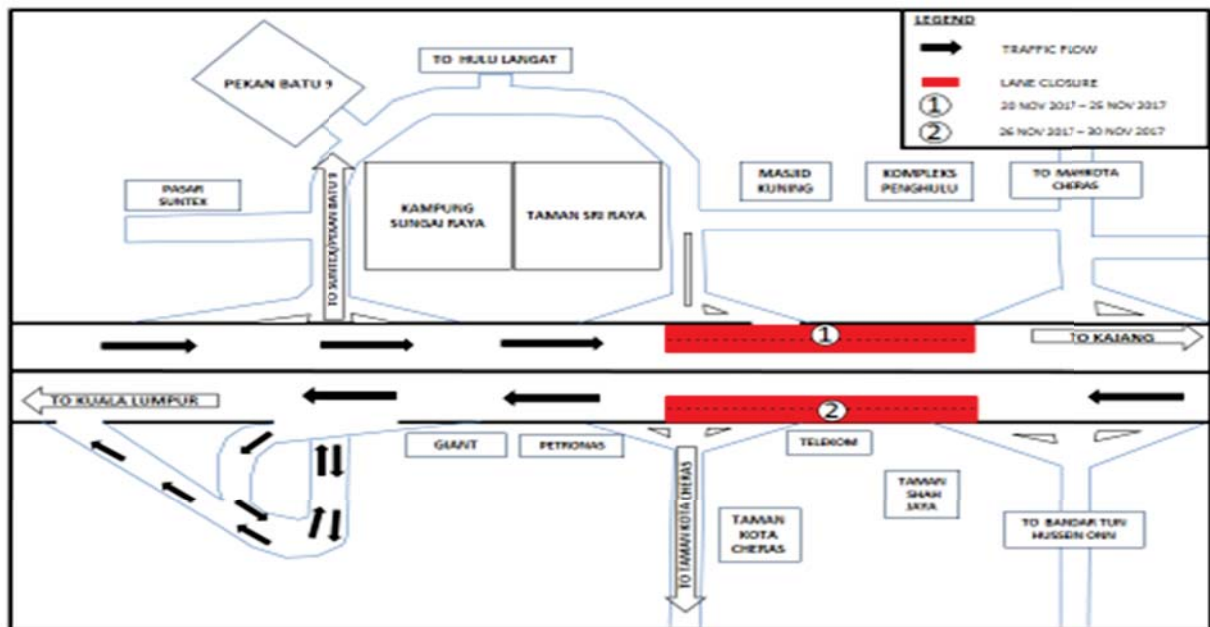
Date	22 November 2017 – 30 November 2017
Time	10:00PM - 5:00AM
Duration	11 Nights
Reasons	To facilitate the reinstatement of street lighting and permanent signage and road marking works.

There will be a continuation of two - lane closures at KM 14.0 until KM 15.5 for the stretch of 1.5 km on the Cheras Kajang Highway from **22 November 2017 – 30 November 2017**.

Closure 1 - Kajang Bound (22 November 2017 – 25 November 2017) from 10:00PM - 5:00AM

Closure 2 - Kuala Lumpur Bound (26 November 2017 – 30 November 2017) from 10:00PM - 5:00AM

Only two lanes will be closed at one time and during this closure, **FOUR lanes** will be reduced to **TWO lanes** for the stretch of **1.5 km** for both bounds (intermittent).



MAP 1: LANE CLOSURE AT KM 14.0 UNTIL KM 15.5 AT CHERAS KAJANG HIGHWAY (KAJANG AND KUALA LUMPUR BOUND)

2. CONTINUATION OF LANE CLOSURE AT KM 13.3 UNTIL KM 14.7 AT CHERAS KAJANG HIGHWAY (KAJANG AND KUALA LUMPUR BOUND) (INTERMITTENT CLOSURE)

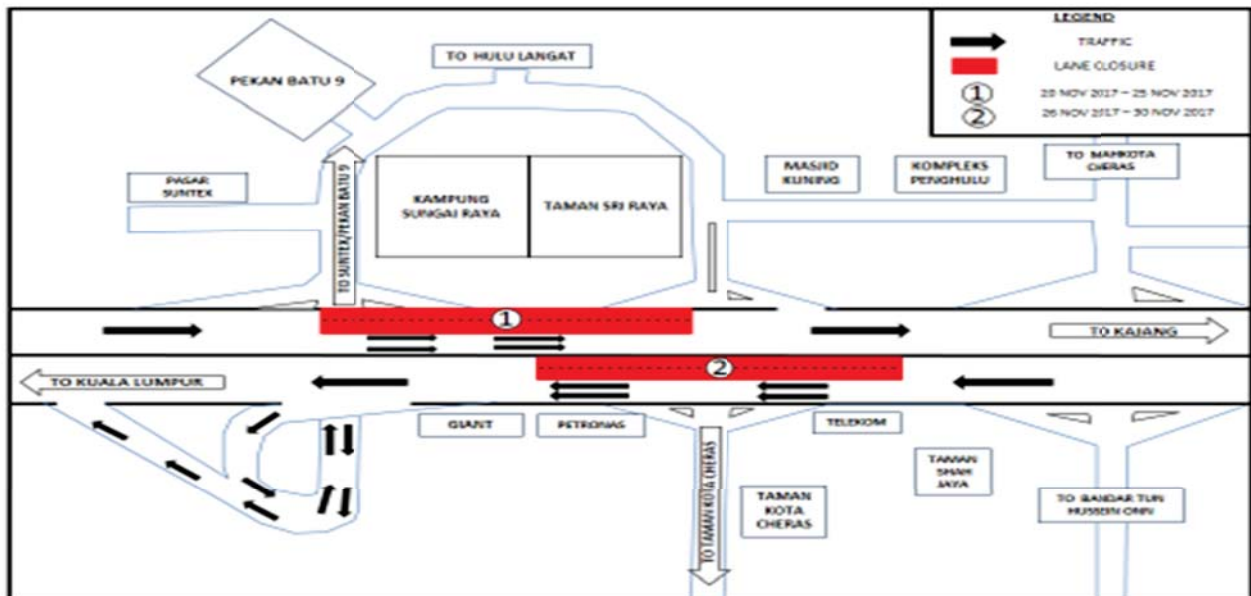
Date	22 November 2017 – 30 November 2017
Time	10:00PM - 5:00AM
Duration	11 Nights
Reasons	To facilitate the reinstatement of street lighting and permanent signage and road marking works.

There will be a continuation of two-lane closure at Cheras – Kajang Highway (Kajang and Kuala Lumpur bound) from **22 November 2017 until 30 November 2017** between **10:00 PM - 5:00 AM** stretching from KM 13.3 until KM 14.7 for **1.4 km** (nearby Kampong Sungai Raya and Taman Sri Raya).

Closure 1 - Kajang Bound (22 November 2017 – 25 November 2017) from between **10:00 PM - 5:00AM**

Closure 2 - Kuala Lumpur Bound (26 November 2017 – 30 November 2017) from between **10:00 PM - 5:00AM**

Only two lanes will be closed at one time and during this closure, **FOUR lanes** will be reduced to **TWO lanes** for the stretch of **1.4 km** for both bounds (intermittent).



MAP 2: LANE CLOSURE AT KM 13.3 UNTIL KM 14.7 AT CHERAS KAJANG HIGHWAY (KAJANG AND KUALA LUMPUR BOUND)

3. CONTINUATION OF PARTIAL LANE CLOSURE AT EXIT 701 – PGA INTERCHANGE AT CHERAS KAJANG HIGHWAY (KAJANG AND KUALA LUMPUR BOUND) (INTERMITTENT CLOSURE)

Date	22 November 2017 – 30 November 2017
Time	10:00AM - 4:00PM and 10:00PM - 5:00AM
Duration	11 Nights
Reasons	To facilitate reinstatement of street lightings and permanent signage and road marking works

There will be a partial lane closure at Exit 701 at the PGA Interchange (Kajang and Kuala Lumpur bound) starting from **22 November 2017 until 30 November 2017** from **10:00AM – 4:00PM** and from **10:00 PM – 5:00AM**. The closure will be implemented in **TWO stages** as numbered in the map.

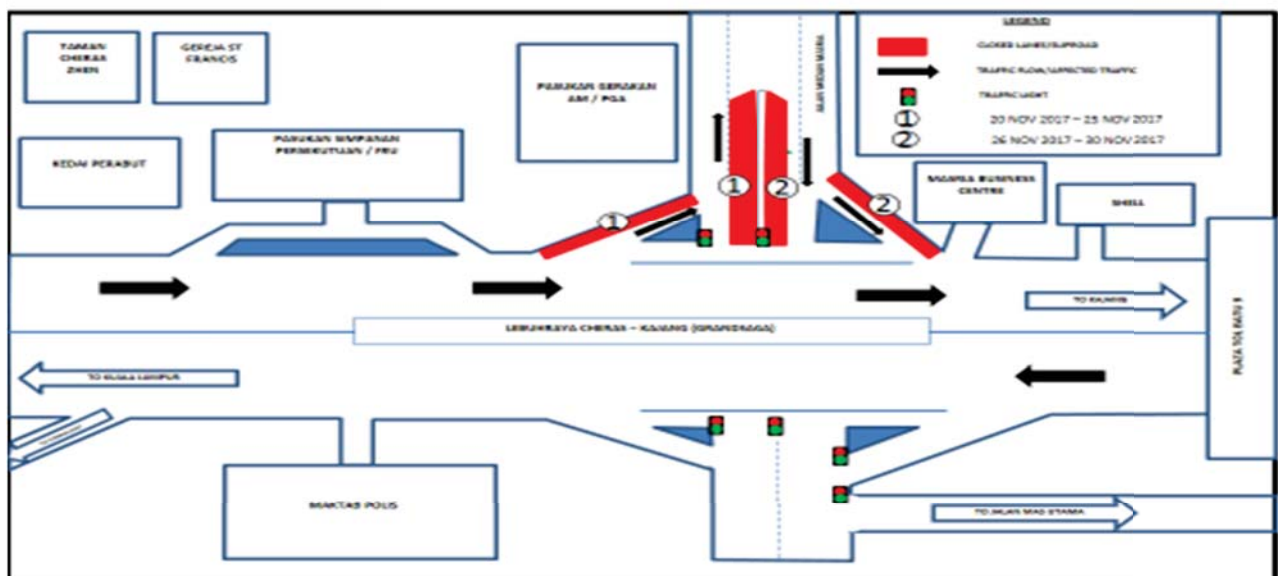
Stage 1, numbered as 1 (22 November 2017 – 25 November 2017)

- One lane closure on the left-most lane on the slip road entering PGA – Kajang Bound and Median 1 lane closure heading towards PGA Bound.

Stage 2, numbered as 2 (26 November 2017 – 30 November 2017)

- Slip road closure (Kajang Bound) from PGA and Median 1 lane closure heading towards Kuala Lumpur Bound.

During this closure stages, motorists are advised to use the remaining opened lane on each bound. No other road diversion will be implemented during this closure.



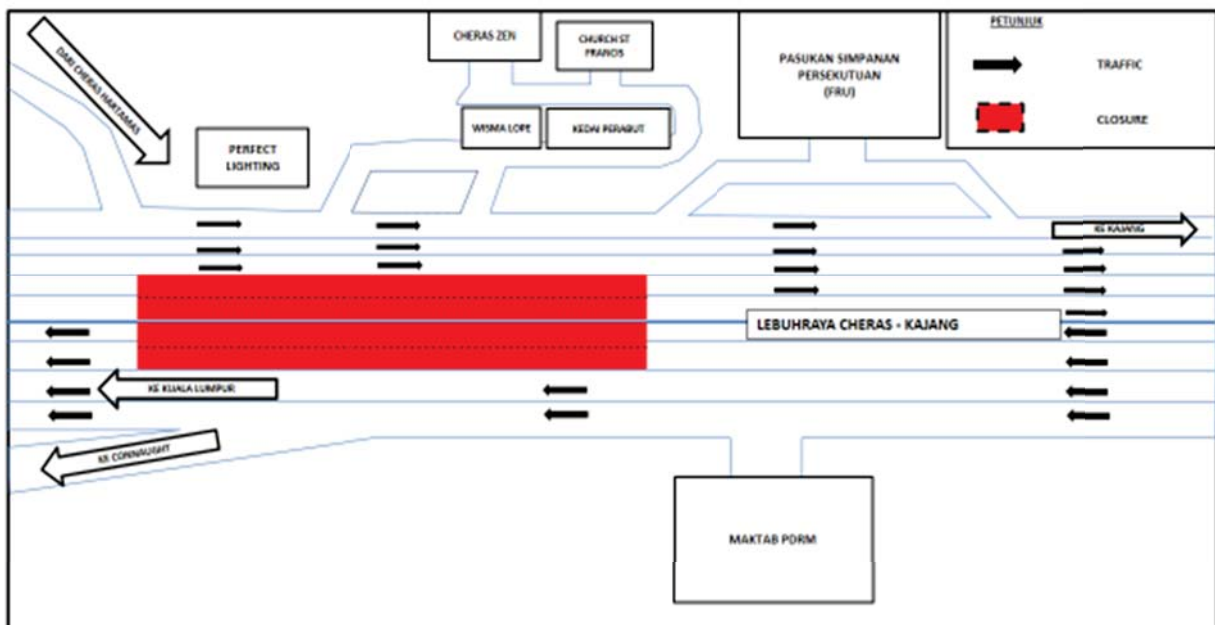
MAP 3: PARTIAL LANE CLOSURE AT EXIT 701 – PGA INTERCHANGE ON CHERAS KAJANG HIGHWAY (KAJANG AND KUALA LUMPUR BOUND)

4. CONTINUATION OF LANE CLOSURE AT KM 10.6 UNTIL KM 11.6 AT CHERAS KAJANG HIGHWAY (KAJANG AND KUALA LUMPUR BOUND) (INTERMITTENT CLOSURE)

Date	22 November 2017 – 30 November 2017
Time	10:00PM - 5:00AM
Duration	11 Nights
Reasons	To facilitate the reinstatement of street lighting, reinstatement of permanent signage and road marking works.

There will be continuation of a two lane closure at the Cheras Kajang Highway (Kajang and Kuala Lumpur Bound) from KM 10.6 until KM 11.6 for the stretch of **1 km**. The closure will be from Cheras Hartamas entering Cheras Kajang Highway (Kajang bound) until the slip road entering FRU Complex at Batu 7, Cheras) from **22 November 2017 until 30 November 2017, from between 10:00PM - 5:00AM**

During this closure, **TWO lanes** will remain open for motorist heading to Kajang from Kuala Lumpur and heading to Kuala Lumpur from Kajang.



MAP 4: LANE CLOSURE AT KM 10.6 UNTIL KM 11.6 AT CHERAS KAJANG HIGHWAY (KAJANG AND KUALA LUMPUR BOUND)

5. CONTINUATION OF SLIP ROAD CLOSURE AT THE EXIT 702 AND EXIT 703 AT CHERAS KAJANG HIGHWAY (KAJANG AND KUALA LUMPUR BOUND) (INTERMITTENT CLOSURE)

Date	22 November 2017 – 30 November 2017
Time	10:00PM - 5:00AM
Duration	11 Nights
Reasons	To facilitate the reinstatement of street lighting, reinstatement of permanent signage, road resurfacing (milling & pavement) and road marking works.

There will be a continuation of slip road closures at Exit 702 and Exit 703 (Kajang-bound and Kuala Lumpur-bound), Cheras-Kajang Highway from **22 November 2017 – 30 November 2017** starting from **10:00PM – 5:00AM**. These closures **will not be conducted simultaneously**.

Closure A (Exit 702, Hulu Langat Interchange, Kajang Bound)

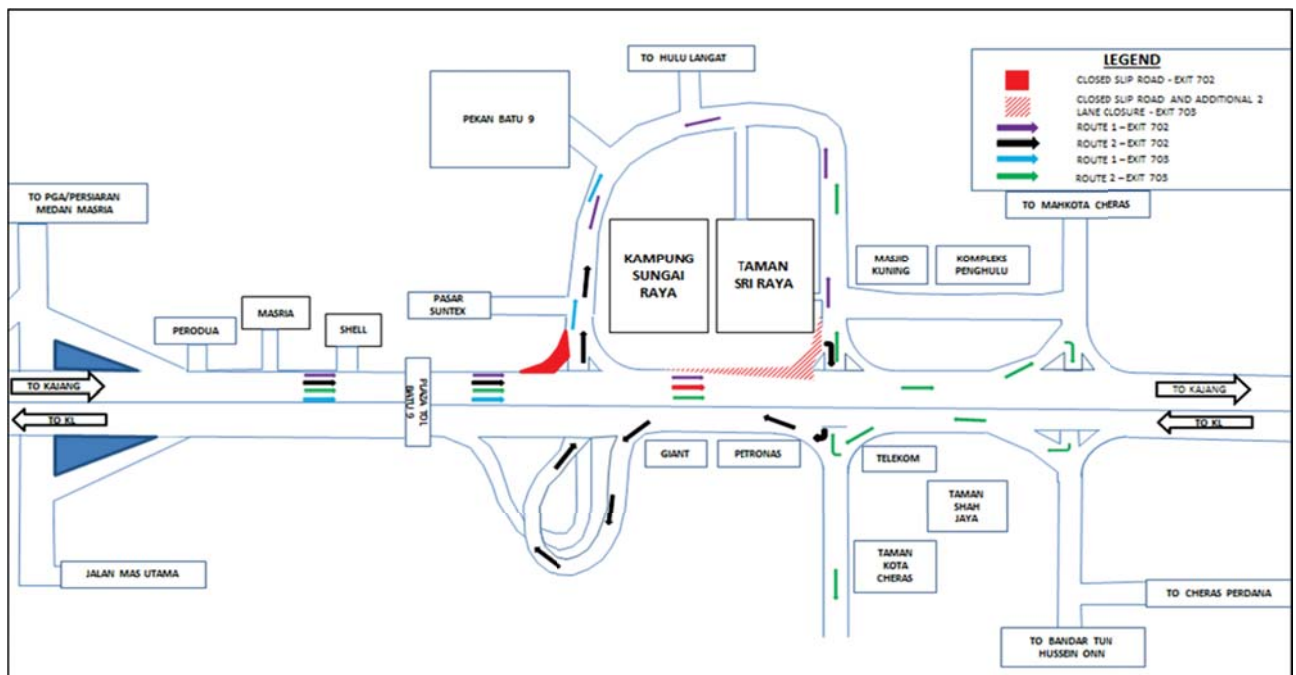
- Motorists from Kuala Lumpur heading towards Hulu Langat/Pekan Batu 9 will have to use Exit 703 (TELEKOM Interchange) entering Jalan Hulu Langat and proceed to Pekan Batu 9/Hulu Langat/Taman Suntex as indicated in **PURPLE** in the appended map,

OR

- Make a U-Turn at Exit 703 (entering Cheras-Kajang Highway – Lumpur Bound) and take Exit 702 Interchange entering Taman Suntex/Pekan Batu 9 as indicated in **BLACK** in the appended map.

Closure B (Exit 703, Telekom Interchange, Kajang Bound)

- Motorists from Kuala Lumpur heading towards Pekan Batu 9/ JalanCheras / Hulu Langat will have to turn left at Exit 702 as indicated in **BLUE** in the map.
- Motorists from Kuala Lumpur heading towards Taman Kota Cheras will be directed to make a U-turn at Bandar Tun Hussein Onn Interchange (Exit 704) and use slip road at Exit 703 (Taman Kota Cheras-bound) as indicated in **GREEN** in the appended map



MAP 5: SLIP ROAD CLOSURE AT EXIT 702 AND EXIT 703 AT CHERAS-KAJANG HIGHWAY (KAJANG AND KUALA LUMPUR BOUND)

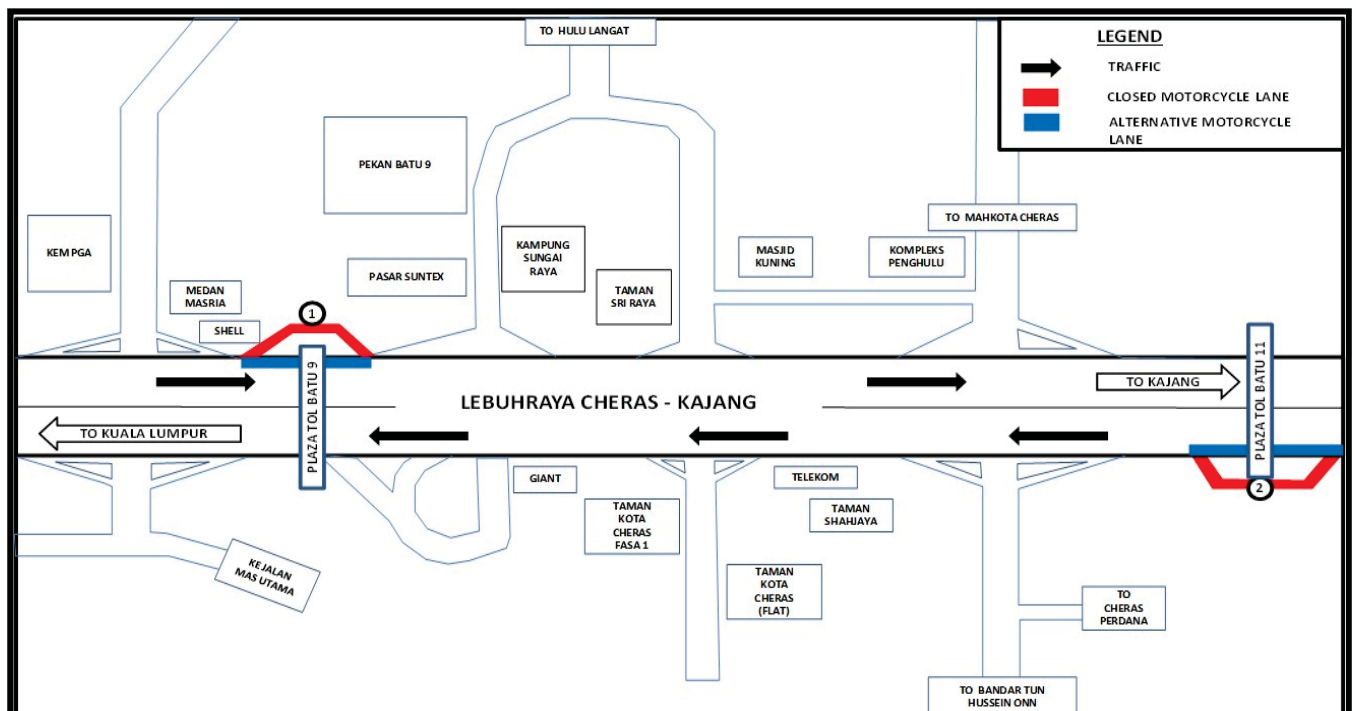
6. CONTINUATION OF MOTORCYCLE LANE CLOSURE AT BATU 9 AND BATU 11 TOLLBOOTH ON CHERAS KAJANG HIGHWAY (KAJANG AND KUALA LUMPUR BOUND) (INTERMITTENT CLOSURE)

Date	22 November 2017 – 30 November 2017
Time	9:00AM – 4:00PM and 10.00PM – 5.00AM
Duration	11 Days
Reasons	To facilitate the maintenance works at the BTHO MRT Station, reinstatement of street lighting and permanent signage and road marking works,

There will be a continuation of closure motorcycle lane closure at Batu 9 and Batu 11 Tollbooth on the Cheras Kajang Highway (Kuala Lumpur & Kajang bound) from **22 November 2017 – 30 November 2017** starting from **9:00AM – 4:00PM** and from **10.00PM – 5.00PM**. The closures will be as follow:

Closure 1: Closure of motorcycle lane at the Batu 9 Tollbooth of Cheras – Kajang Highway (Kajang- bound). During this closure, all motorcyclists are advised to use the left-most lane near the toll booth as indicated **BLUE** in the appended map.

Closure 2: Closure of motorcycle lane at the Batu 11 Tollbooth of Cheras – Kajang Highway (Kuala Lumpur-bound) During this closure, motorcyclist are advised to use the left-most lane near the toll booth as an alternate route (as indicated **BLUE**).



MAP 6: MOTORCYCLE LANE CLOSURE AT BATU 9 AND BATU 11 TOLLBOOTH ON CHERAS KAJANG HIGHWAY (KAJANG AND KUALA LUMPUR BOUND)

For media enquiries, please contact:

Hillalluddin Mohd Ali

Tel: [+6019 201 0002](tel:+60192010002)

hillalluddin@azrb.com

Leanne Ann Susau

Tel: +603 7493 3963

Leanne@mgjv-kvmrt.com.my