

TRAFFIC ANNOUNCEMENT

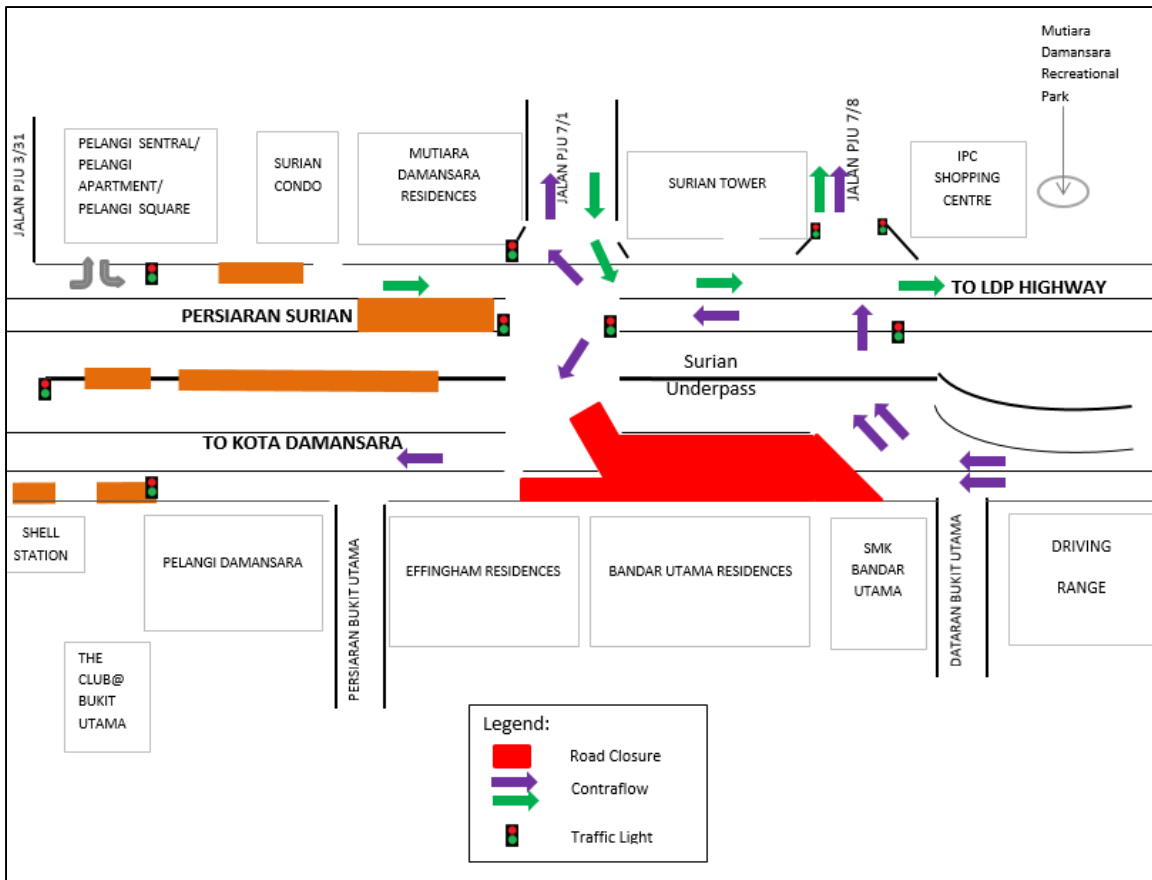
UPDATES ON TRAFFIC MANAGEMENT PLAN FOR MRT CONSTRUCTION ALONG PERSIARAN SURIAN

1. CONTINUATION OF PHASE 2 TRAFFIC MANAGEMENT PLAN FOR PERSIARAN SURIAN AT MUTIARA DAMANSARA, PERSIARAN SURIAN

Date	2 March 2016 – 29 May 2016
Time	24 hours
Duration	3 months
Reason	Mobilisation of construction vehicles for related works for the Mutiara Damansara MRT Station and Entrances.

There will be a continuation of the Phase 2 Traffic Management Plan for Persiaran Surian at Mutiara Damansara in the vicinity of Surian Tower and Bandar Utama 4 residential area from **2 March 2016 -31 May 2016 for 24 hours**.

The road in front of Bandar Utama residences from the junctions of Jalan PJU 7/1 to PJU 7/8 (Kota Damansara-bound) will be closed for the Mutiara Damansara MRT Station Entrance A works. Motorists will be diverted to use the newly opened contraflow lanes in front of Surian Tower for this 150m stretch.



CONTINUATION OF PHASE 2 TRAFFIC MANAGEMENT PLAN FOR PERSIARAN SURIAN AT MUTIARA DAMANSARA, PERSIARAN SURIAN

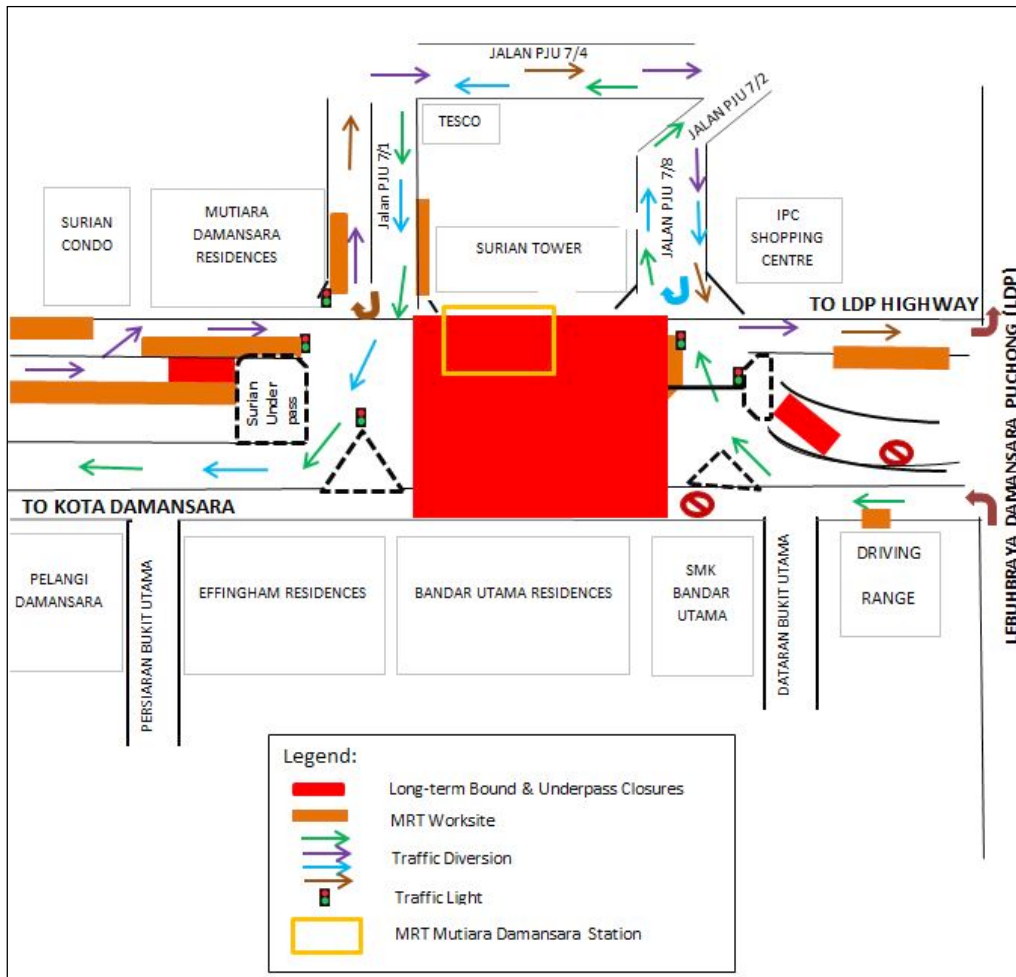
2. CONTINUATION OF LONG-TERM TRAFFIC MANAGEMENT PLAN ALONG PERSIARAN SURIAN AT THE SURIAN UNDERPASS AND IN THE VICINITY OF BANDAR UTAMA RESIDENCES (KOTA DAMANSARA-BOUND)

Date	2 March 2016 – 29 May 2016
Time	12 midnight to 6:00am
Duration	3 months
Reason	To facilitate concreting and related works for the MRT Mutiara Damansara Station

There will be an continuation of a long-term night Traffic Management Plan (TMP) along Persiaran Surian involving the full Surian Underpass closure and bound closure in front (BU4 residences) i.e. from the traffic light junctions of Jalan PJU 7/8 to Jalan PJU 7/1 (Kota Damansara-bound) from **2 March 2016 – 31 May 2016** as indicated in RED in the map.

During this closure, the following diversions will take place:

- Motorists from Kota Damansara wanting to use the Surian Underpass to access LDP Highway will be diverted into Jalan PJU 7/1, turn right into Jalan PJU 7/4 and exit back to Persiaran Surian using PJU 7/8 (As indicated in **purple** in map).
- Motorists from Jalan PJU 7/1 wanting to turn left to access LDP Highway will have to do a U-turn back into Jalan PJU 7/1, turn right into Jalan PJU 7/4 and exit back to Persiaran Surian using PJU 7/8 (as indicated in **brown** in map).
- Motorists from LDP Highway wanting to go straight towards Kota Damansara will be diverted to turn right into Jalan PJU 7/8, turn left into Jalan PJU 7/4 and exit back to Persiaran Surian using PJU 7/1 (As indicated in **green** in map).
- Motorists from Jalan PJU 7/8 wanting to turn right to access Kota Damansara will have to do a U-turn back into Jalan PJU 7/8, turn left into Jalan PJU 7/4 and exit back to Persiaran Surian using Jalan PJU 7/1 (As indicated in blue in map).



CONTINUATION OF LONG-TERM TRAFFIC MANAGEMENT PLAN ALONG PERSIARAN SURIAN AT THE SURIAN UNDERPASS AND IN THE VICINITY OF BANDAR UTAMA

For media enquiries, please contact:

Adeline De Cruz Tel: +6012 217 2017
 Siti Fadzillah Ismail Tel: +603 7493 3965

adeline@mudajaya.com
 sitifadzillah@mgjv-kvmrt.com.my