



NOTICE

PROJEK MASS RAPID TRANSIT LALUAN 2: SUNGAI BULOH – SERDANG – PUTRAJAYA (SSP)

MRT SSP Line Project Construction Activities Along Jalan Jinjang Permai, Jalan Jinjang Permai 2, Jalan Jinjang Permai 3, Jalan Kepong (Kepong-bound), Jalan Jambu Air Mawar & Jalan Jambu Jerteh

(17 October 2017 - 17 February 2018)

Please be informed that the KVMRT SSP Line construction activities will continue along Jalan Jinjang Permai, Jalan Jinjang Permai 2, Jalan Jinjang Permai 3, Jalan Kepong (Kepong-bound), Jalan Jambu Air Mawar & Jalan Jambu Jerteh from **17 October 2017 until 17 February 2018**. The following are the construction activities that will be conducted:

- Utilities relocation
- Any other related works

To facilitate the above-mentioned works, below are the closures that will take place from **10pm – 6am intermittently**:

Closure A

- Jalan Kepong (Jinjang Selatan) & Jalan Jambu Air Mawar - Internal road closures for a stretch of 180 metres by stages.
- During the closure, motorist heading to Jalan Kepong (Jinjang Selatan) from Jalan Kepong (Kepong-bound) will have to make a left turn, passing by SSS Machinery Hardware and the houses towards Jalan Jambu Air Laut, then make a left turn to Jalan Jambu Arang 2, then turn right to join Jalan Kepong (Jinjang Selatan), as indicated in **GREEN** arrows in the map.
- Jalan Kepong (Jinjang Selatan) – Two (2) parking bays closure near Namee Florist, for **24-hours** during this period.

Below are the closures that will take place for **24-hours** during this period:

Closure B: Jalan Jinjang Permai (beside Jinjang 3 temples & nearby the junction) – Road curb and partial internal road closure for a stretch of 30 metres.

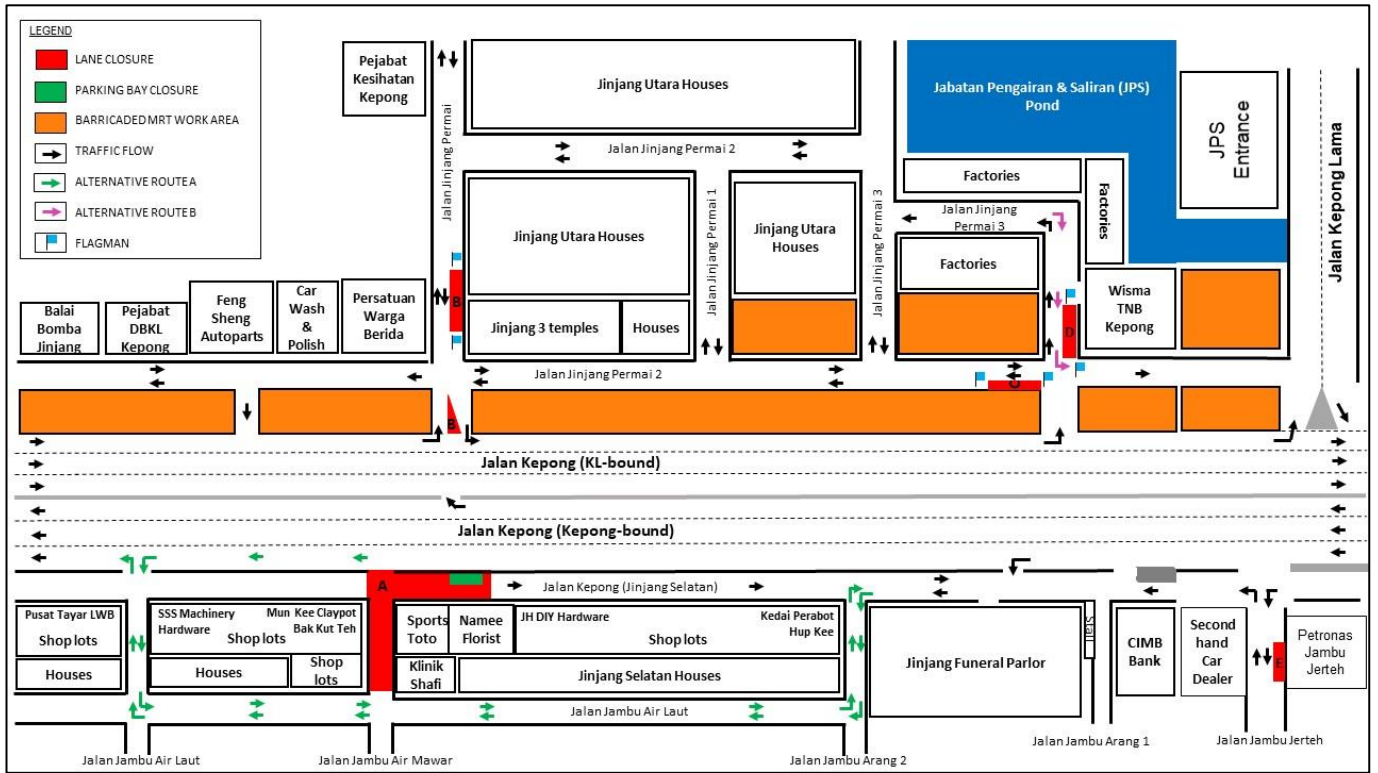
Closure C: Jalan Jinjang Permai 2 – Partial internal road closure for a stretch of 50 metres intermittently.

Closure D: Jalan Jinjang Permai 3 (beside Wisma TNB Kepong) - Road curb and partial internal lane closure for a stretch of 20 metres, the traffic flow is as indicated in **PURPLE** arrows in the map.

Closure E: Jalan Jambu Jerteh (beside Petronas Jambu Jerteh) - Partial internal road closure for a stretch of 15 metres.

During these closures, motorist will be diverted to the opposite lane by flagmen at both end using "Stop and Go" method of traffic flow.

Please refer to the map for further information on the construction works as mentioned above:



We apologise for any inconvenience caused during this period. Your kind understanding and patience is much appreciated as we are building the MRT SSP Line for our future and to improve KL's public transportation system.

For more information, please contact:-

IJM Construction Sdn. Bhd.

Juliet Choong Wai Gaik, Senior Manager, PR & Stakeholder Management:

012 – 6010 318

Irynn Eng Poh Ling, Manager, PR & Stakeholder Management:

012 – 2289 270

MRT Hotline: 1800 82 6868

www.mymrt.com.my

feedback@mymrt.com.my

**WE ARE BUILDING THE MRT SSP LINE FOR OUR FUTURE
THANK YOU**

