



NOTICE

PROJEK MASS RAPID TRANSIT LALUAN 2 : SUNGAI BULOH – SERDANG – PUTRAJAYA (SSP)

MRT SSP Line Project Construction Activities Along Jalan Tapah, Jalan Khalsa, Jalan Cumarasami, Jalan Vethavanam & Jalan St. Thomas (09 August 2017 – 09 December 2017)

Please be informed that the KVMRT SSP Line construction activities will continue along Taman Kaya along Jalan Tapah, Jalan Khalsa, Jalan Cumarasami, Jalan Vethavanam & Jalan St. Thomas from **09 August 2017 until 09 December 2017**. The following are the construction activities that will be conducted are:

- Utilities Relocation
- Any other related works

To facilitate the above-mentioned works, road curb and partial internal lane closures will be implemented by stages **intermittently** from **10:00am - 6:00pm** as per below:

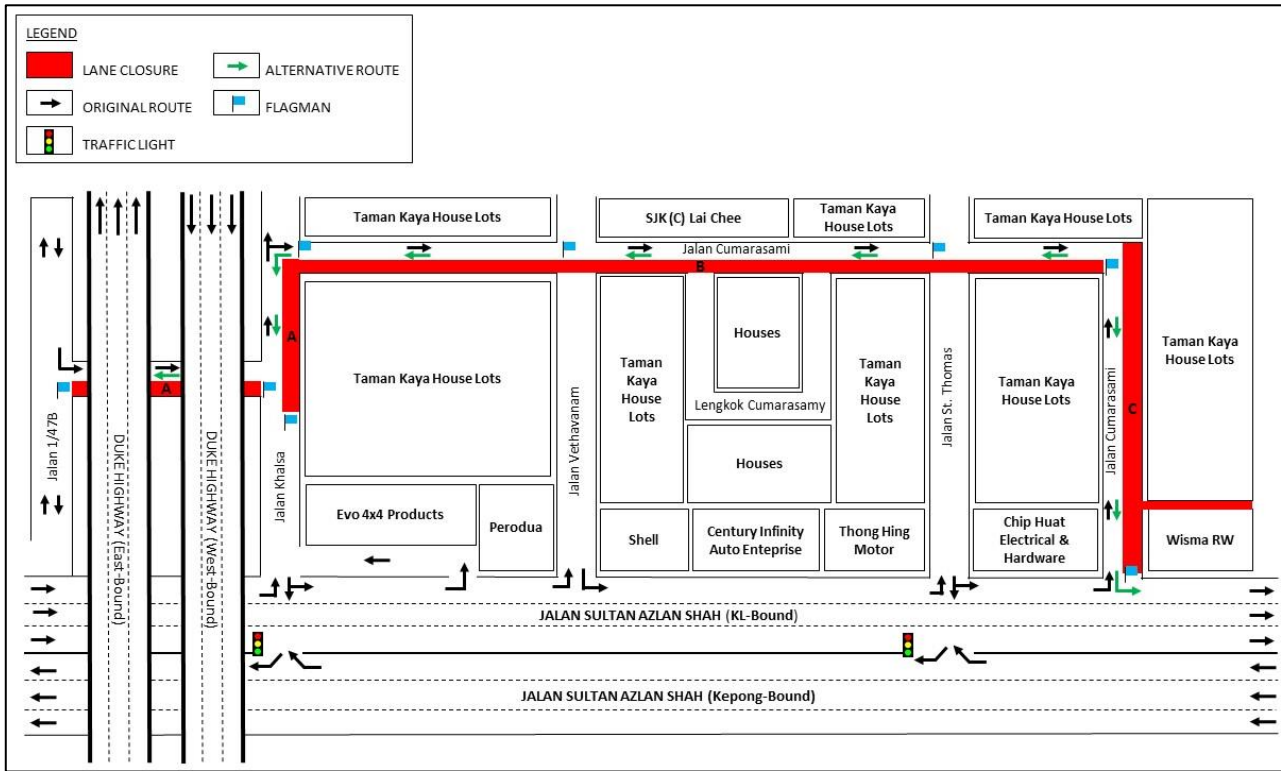
Closure A: Road curb and partial internal lane closure for a stretch of 80 metres per stage along Jalan Tapah & Jalan Khalsa (below DUKE Highway).

Closure B: Road curb and partial internal lane closure for a stretch of 80 metres per stage along Jalan Cumarasami, Taman Kaya (near SJK (C) Lai Chee and Taman Kaya house lots).

Closure C: Road curb and partial internal lane closure for a stretch of 80 metres per stage along Jalan Cumarasami (nearby Wisma RW and Taman Kaya house lots).

During the closures, motorists using these roads will be diverted to the opposite lane by flagmen at both end using "Stop and Go" method of traffic flow (as indicated in **GREEN** arrows in map).

Please refer to the map for further reference on the construction works as mentioned above:



We apologise for any inconvenience caused during this period. Your kind understanding and patience is much appreciated as we are building the MRT SSP Line for our future and to improve KL's public transportation system.

For more information, please contact:-

IJM Construction Sdn. Bhd.

Juliet Choong Wai Gaik, Senior Manager, PR & Stakeholder Management:

012 – 6010 318

Irynn Eng Poh Ling, Manager, PR & Stakeholder Management:

012 – 2289 270

MRT Hotline: 1800 82 6868

www.mymrt.com.my

feedback@mymrt.com.my

**WE ARE BUILDING THE MRT SSP LINE FOR OUR FUTURE
THANK YOU**

