

TRAFFIC ANNOUNCEMENT
UPDATES ON TRAFFIC MANAGEMENT PLAN FOR MRT CONSTRUCTION
ALONG LDP HIGHWAY, PERSIARAN BANDAR UTAMA AND JALAN DAMANSARA
30 MAY 2016

1. CONTINUATION OF CLOSURE ALONG DAMANSARA- PUCHONG HIGHWAY (LDP) AND PERSIARAN BANDAR UTAMA (KEPONG-BOUND AND SS2-BOUND)

Date	1 June 2016 – 4 June 2016
Time	CLOSURE A- 12:00 Midnight - 6:00am (Monday – Friday,) 12:00 Midnight - 8:00am (Saturday & Sunday) CLOSURE B – 11:00PM -6:00AM
Duration	4 days
Reason	To facilitate the mobilisation of heavy construction vehicles, noise barrier, painting works, beam launching and concreting works for the future MRT Bandar Utama Station

There will be a continuation of the closure along LDP Highway and Persiaran Bandar Utama from **1 June 2016 – 4 June 2016** . The traffic management plan involves the following closure:

CLOSURE A: : Full road closure along LDP Highway (Kepong-bound) from Persiaran Bandar Utama junction to Lebu Bandar Utama junction for a stretch of 500m (including U-turn to SS2-bound). During this closure, following diversions will take place:

- (↔) **Motorists from SS2/Jalan Damansara wanting to turn into Lebu Bandar Utama**
To be diverted to turn left into Persiaran Bandar Utama and turn right after the traffic light to Dataran Bandar Utama before heading to Lebu Bandar Utama.
- (→) **Motorists from the Sprint Highway intending to go to Bandar Utama** may also continue to travel on the Sprint Highway (E23) and approach One Utama from the southern entry i.e. Lebu Bandar Utama.

CLOSURE B: Closure along Persiaran Bandar Utama and in front of Sri Pentas

B1: Two-lane closure at LDP Highway (Kepong-bound, in front of Sri Pentas)

B2: Closure of lanes along Persiaran Bandar Utama exiting into LDP Highway (Kepong-bound, next to Sri Pentas)

During this night closure, the following diversions will take place:

- Motorist from First Avenue heading to LDP Highway will be directed to make a U-turn at Persiaran Bandar Utama, then turn right at the traffic light to Dataran Bandar Utama and take another right at the traffic light of Lebu Bandar Utama.
- Motorist from Persiaran Bandar Utama heading to LDP will be directed to turn into Dataran Bandar Utama and turn right at the traffic light of Lebu Bandar Utama.
(*Both diversions are indicated in **GREEN**)

2. BOUND CLOSURE FROM PIZZA HUT TO IWK (CLOSURE A)

Date	1 June 2016 -14 July 2016
Time	11:00PM - 6:00AM
Duration	2 months
Reason	To facilitate construction works for the future MRT TTDI Station and Entrances

There will be a continuation of a bound closure from TTDI Pizza Hut to IWK from **1 June 2016 – 14 July 2016 starting 11:00PM- 6:00AM , INTERMITTENTLY** . During this closure , motorists are advised follow these diversions:

- **Motorists from Jalan Tun Mohd Fuad going to SPRINT Highway (KL-bound):**

(→) Turn right at the traffic light junction at Jalan Tun Mohd Fuad, then turn left at the next traffic light into LDP (SS2-bound) to access SPRINT Highway at the Damansara Utama Interchange near the Police Station.

- **Motorists from Jalan Leong Yew Koh going to SPRINT Highway (KL-bound):**

(→) Go to TTDI Interchange Underpass towards SS2 and proceed to SPRINT Highway at the Damansara Utama Interchange

- **Motorists from Kepong going to SPRINT Highway (KL -bound):**

(→) Proceed to the flyover and turn left at Damansara Utama Interchange to join the SPRINT Highway.

- **Motorists on LDP Highway from SS2 heading to Jalan Damansara (KL/ SPRINT Highway-bound):**

(→) Will be directed to the Bandar Utama Interchange to make a U-turn. Motorists are required to take the flyover at the TTDI Interchange towards SS2 to connect to the SPRINT Highway at the Damansara Utama Interchange.

- **Motorists on the SPRINT Highway going to TTDI**

(→) will be diverted to drive to TTDI Interchange and make a U-Turn before the traffic light and proceed to Jalan Tun Mohd Fuad .



MAP 2 : BOUND CLOSURE FROM PIZZA HUT TO IWK (CLOSURE A)

3. CONTRAFLOW FROM PIZZA HUT TO ENTRANCE B OF FUTURE MRT TTDI STATION (CLOSURE B)

Date	1 June 2016 - 14 July 2016
Time	11:00PM to 6:00AM
Duration	2 months
Reason	To facilitate construction of Entrance A, Entrance B and related construction works for the future MRT TTDI Station

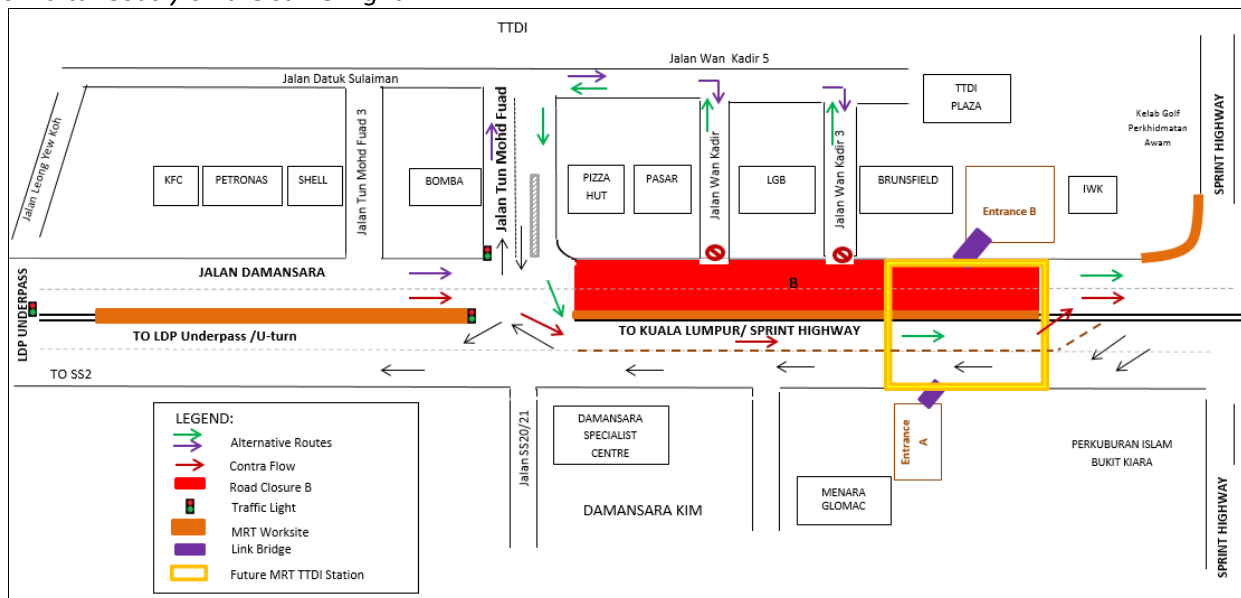
A contra-flow will be implemented during this closure. Motorists from LDP/TTDI heading towards KL/SPRINT Highway will be diverted to the opposite lane and one traffic lane will be made available for each direction (SPRINT Highway- and LDP Highway-bounds). The junctions of Jalan Wan Kadir and Jalan Wan Kadir 3 with Jalan Damansara will be temporarily closed/inaccessible during the contra-flow period. As such, motorists are advised to use the following alternative routes :

(→) **Motorists from Jalan Damansara heading towards Jalan Wan Kadir and Jalan Wan Kadir 3** will be directed to turn left into Jalan Tun Mohd Fuad, and turn right to Jalan Wan Kadir 5.

(←) **Motorists from Jalan Wan Kadir and Jalan Wan Kadir 3 heading towards Jalan Damansara** will have to turn left to Jalan Wan Kadir 5, and left again to Jalan Tun Mohd Fuad.

Alternatively, motorists on LDP Highway (from Kepong) heading towards Kuala Lumpur can opt to bypass Jalan Damansara by using Penchala Link or head straight towards the SPRINT Highway.

This contraflow for Closure B and bound Closure A from Pizza Hut to IWK will not be implemented simultaneously on the same night.



MAP 3: CONTRAFLOW FROM PIZZA HUT TO ENTRANCE B OF FUTURE MRT TTDI STATION (CLOSURE B)

4. SLIP ROAD CLOSURE FROM LDP HIGHWAY INTO JALAN DAMANSARA (CLOSURE C)

Date	1 June 2016 - 30 June 2016
Time	11:00PM - 6:00AM
Duration	1 month
Reason	To facilitate painting, cables installation and related construction works for the special span and future MRT TTDI Station

There will be a continuation of the long-term night Traffic Management Plan (TMP) implemented in the vicinity of the Taman Tun Dr Ismail Interchange from **1 June 2016 – 30 June 2016**, **INTERMITTENTLY**. The closures (as indicated in **RED** in the map) are as follows:

- (i) **Full slip road from Jalan Leong Yew Koh leading to Jalan Damansara (KL/ SPRINT Highway-bound) and to the underpass at the TTDI Interchange**
- (ii) **The road exiting Jalan Leong Yew Koh to LDP Highway**

The following diversions will take place:

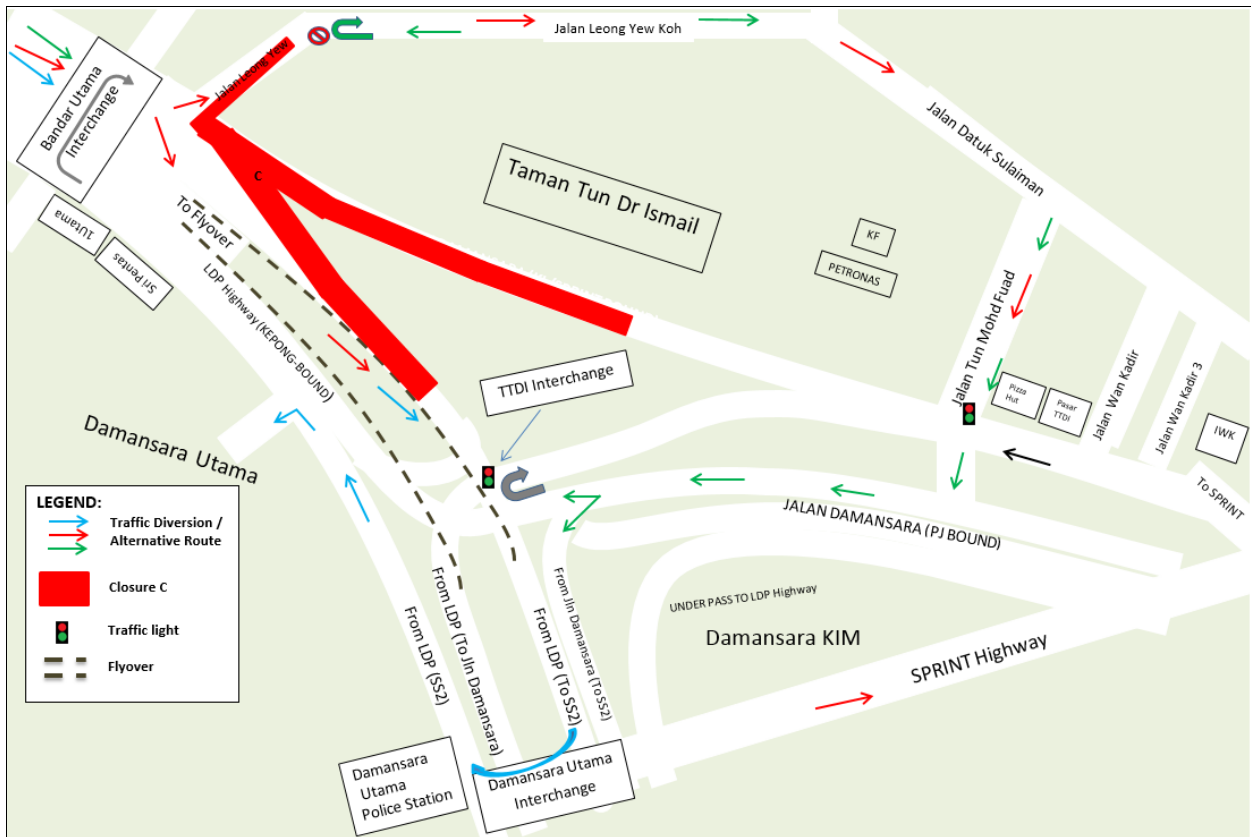
· **Motorists from LDP Highway wanting to turn into Jalan Damansara (KL / SPRINT Highway-bound):**

Take the flyover and head towards LDP Highway (SS2-bound) to go to SPRINT Highway at the Damansara Utama Interchange

OR

(**→**) Turn left into Jalan Leong Yew Koh where they can access the TTDI area via Jalan Datuk Sulaiman and exit back into Jalan Damansara.

- Motorists wanting to exit Jalan Leong Yew Koh to access SS2 or make a U-turn at the TTDI Interchange:**
Interchange:
 (→) Turn back to Jalan Datuk Sulaiman to exit to Jalan Damansara via Jalan Tun Mohd Fuad where they can turn right and proceed ahead to access SS2 and make a U-turn at the Damansara Utama Interchange to access SS21 residential area or go towards Kepong.
 - Motorists on LDP Highway (from Kepong) wanting to turn into Damansara Utama (SS21) using the TTDI Interchange Underpass:**
 (→) Take the flyover and head towards LDP Highway (SS2-bound) and do a U-turn at the Damansara Utama Interchange.
- Motorists on LDP Highway from SS2 heading to Jalan Damansara (KL / SPRINT Highway-bound) will not be affected



MAP 4: SLIP ROAD CLOSURE FROM LDP HIGHWAY INTO JALAN DAMANSARA (CLOSURE C)

**5. CLOSURE OF U-TURN TO TTDI AND ACCESS ROAD TO JALAN DAMANSARA FROM SS2
(CLOSURE D)**

Date	1 June 2016 - 30 June 2016
Time	11:00PM to 6:00AM
Duration	1 month
Reason	Mobilisation of construction vehicles for installation of sound barrier works, noise barrier works at Pinggir Zaaba, reinstatement of TTDI Interchange and related works for TTDI MRT Station and Entrances.

This traffic management plan will involve the closure of the U-turn to TTDI as well as the closure of the access road to Jalan Damansara from SS2 from **1 June 2016 - 30 June 2016** , **INTERMITTENTLY**. During the closure, the following diversions will take place:

(→) Motorists on Jalan Damansara wanting to take a U-turn to access TTDI:

Turn right earlier at the Jalan Tun Mohd Fuad traffic light junction and use Jalan Datuk Sulaiman and Jalan Leong Yew Koh.

(→) Motorists from SS2 wanting to turn right into Jalan Damansara (KL/ SPRINT Highway-bound):

Motorists will be diverted to take the flyover and do a U-turn at the Bandar Utama interchange or a U-turn at the Damansara Perdana Interchange (should the earlier U-turn be closed for the Bandar Utama station works).



MAP 5: CLOSURE OF U-TURN TO TTDI AND ACCESS ROAD TO JALAN DAMANSARA FROM SS2 (CLOSURE D)

For media enquiries, please contact:

Adeline De Cruz
Siti Fadzillah Ismail

Tel: +6012 217 2017
Tel: +603 7493 3965

adeline@mudajaya.com
sitifadzillah@mgjv-kvmrt.com.my

MMC GAMUDA KVMRT (PDP) SDN BHD (927050-H)
Block A, Level 7, Menara Mustapha Kamal, PJ Trade Centre, No 8, Jalan PJU 8/8A,
Bandar Damansara Perdana, 47820 Petaling Jaya, Selangor, Malaysia
T: 603 7494 2200 F: 603 7722 2643 www.kvmrt.com.my