

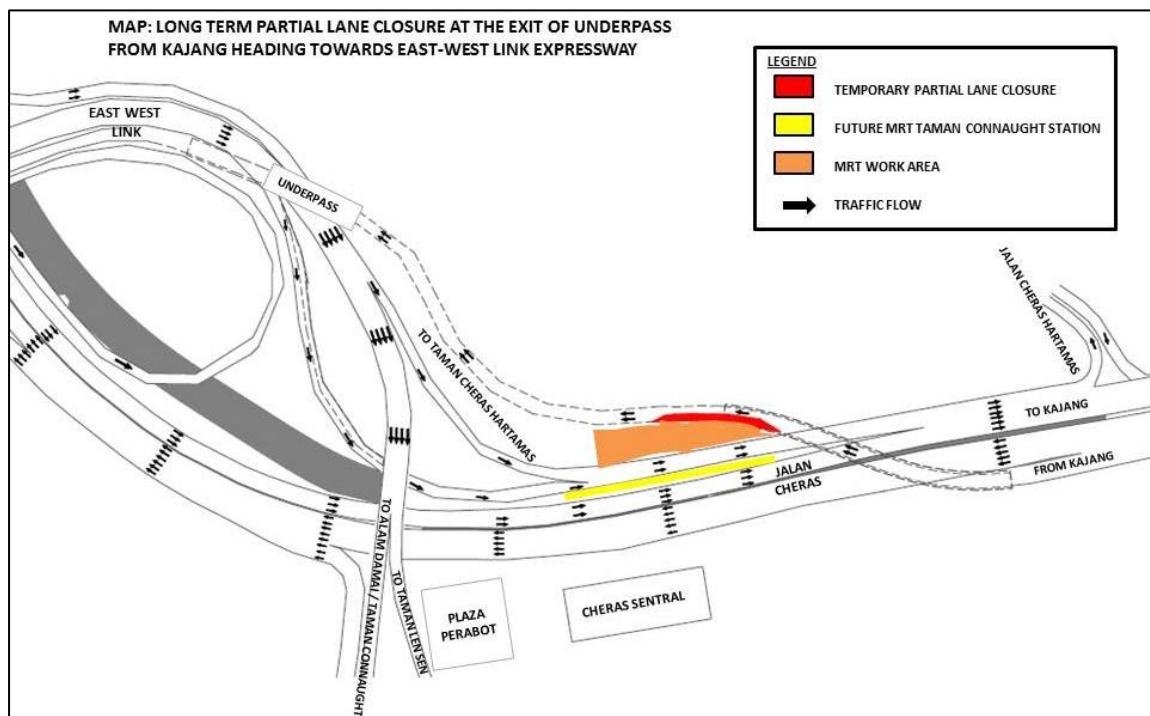
TRAFFIC ANNOUNCEMENT
UPDATES ON TRAFFIC MANAGEMENT PLAN FOR MRT CONSTRUCTION AT
JALAN CHERAS & EAST-WEST LINK EXPRESSWAY
27 MAY 2016

1. LONG TERM PARTIAL LANE CLOSURE OF UNDERPASS TOWARDS THE EAST-WEST LINK EXPRESSWAY

Date	30 May 2016 -1 July 2016
Time	24 hours
Duration	62 days
Reason	To facilitate the construction of Link Bridge to Taman Connaught MRT Station

There will be a continuation of the long-term partial lane closure stretching approximately 150m at the left lane of the underpass from Kajang towards East West Link Expressway from **30 May 2016 -1 July 2016, 24 hours daily**.

During this closure, one lane will be made available to motorists from Kajang heading towards the East-West Link Expressway.



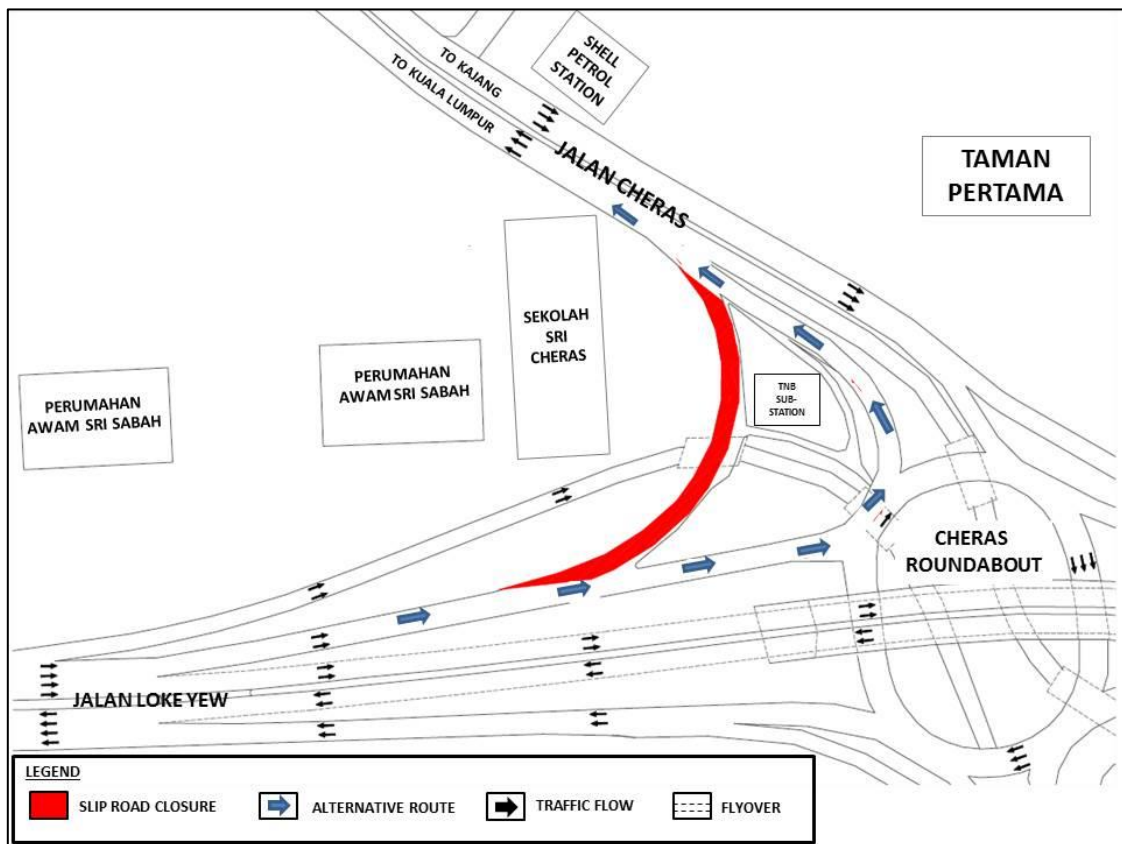
MAP 1: LONG TERM PARTIAL LANE CLOSURE OF UNDERPASS TOWARDS THE EAST-WEST LINK EXPRESSWAY

2. SLIP ROAD CLOSURE AT THE EXIT OF JALAN CHERAS FROM JALAN LOKE YEW (KL-BOUND)

Date	31 May 2016 - 31 July 2016
Time	24 hours
Duration	72 days
Reason	To facilitate the construction of pedestrian link bridge to future Taman Pertama MRT Station

There will be a closure on the left-turn of Jalan Loke Yew to Jalan Cheras at KM1.65 for a stretch of 150-Meter from **31 May 2016 - 31 July 2016, 24 hours daily.**

As an alternative to access Jalan Cheras, motorists from Jalan Loke Yew heading to Kuala Lumpur are advised to use the Cheras roundabout to get onto Jalan Cheras.



MAP 2: SLIP ROAD CLOSURE AT THE EXIT OF JALAN CHERAS FROM JALAN LOKE YEW (KL-BOUND)


3. CONTINUATION OF NIGHT ROAD CLOSURE AT INTERSECTION BETWEEN EAST-WEST LINK EXPRESSWAY AND JALAN CHERAS

Date	30 May 2016 - 30 August 2016
Time	11:00PM – 5:00AM
Duration	92 days
Reason	To facilitate the construction of Taman Connaught MRT Station, Link Bridge from Kajang bound & pedestrian bridge

There will be a continuation of the night road closure between the intersection of the East-West Link Expressway and Jalan Cheras (near Cheras Sentral) from **30 May 2016 – 30 August 2016** starting **11:00PM – 5:00AM**. The closure will be implemented in the following stages.


Stage A

- Two-lane closure at the slip road from East-West Link/Taman Connaught heading towards Jalan Cheras (Kajang-bound), Taman Len Sen and Alam Damai. One lane will be made available to motorists heading to Taman Len Sen and Alam Damai.
- Full lane closure from slip road of East-West Link Expressway until before the junction of Jalan Cheras Hartamas.

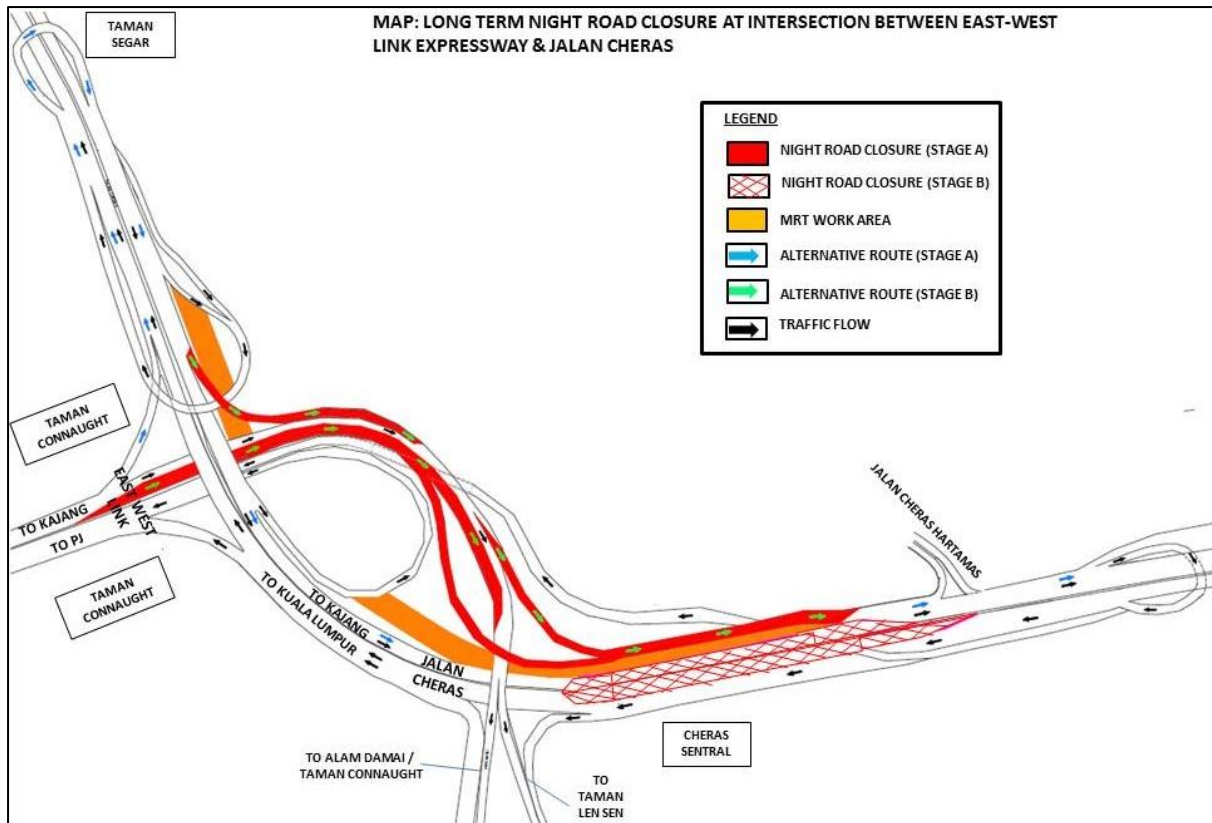
() **Motorists from Taman Connaught (on East West Link) heading to Kajang** will be diverted to make a U-turn at Jalan Cheras (near Taman Segar).

Stage B

- Full lane closure at the stretch of Jalan Cheras (Kajang-bound) main line and two lanes at Jalan Cheras (Kuala Lumpur-bound). Two lanes will be made available to motorists heading to Kuala Lumpur.

() **Motorists from Kuala Lumpur (on Jalan Cheras) and Taman Connaught towards Jalan Cheras Hartamas/Kajang** will be diverted to slip road of East-West Link Expressway to the junction of Jalan Cheras Hartamas/Kajang.

Motorists from Kuala Lumpur heading towards Petaling Jaya via East-West Link Expressway are not affected.



MAP 3: CONTINUATION OF NIGHT ROAD CLOSURE AT INTERSECTION BETWEEN EAST-WEST LINK EXPRESSWAY AND JALAN CHERAS

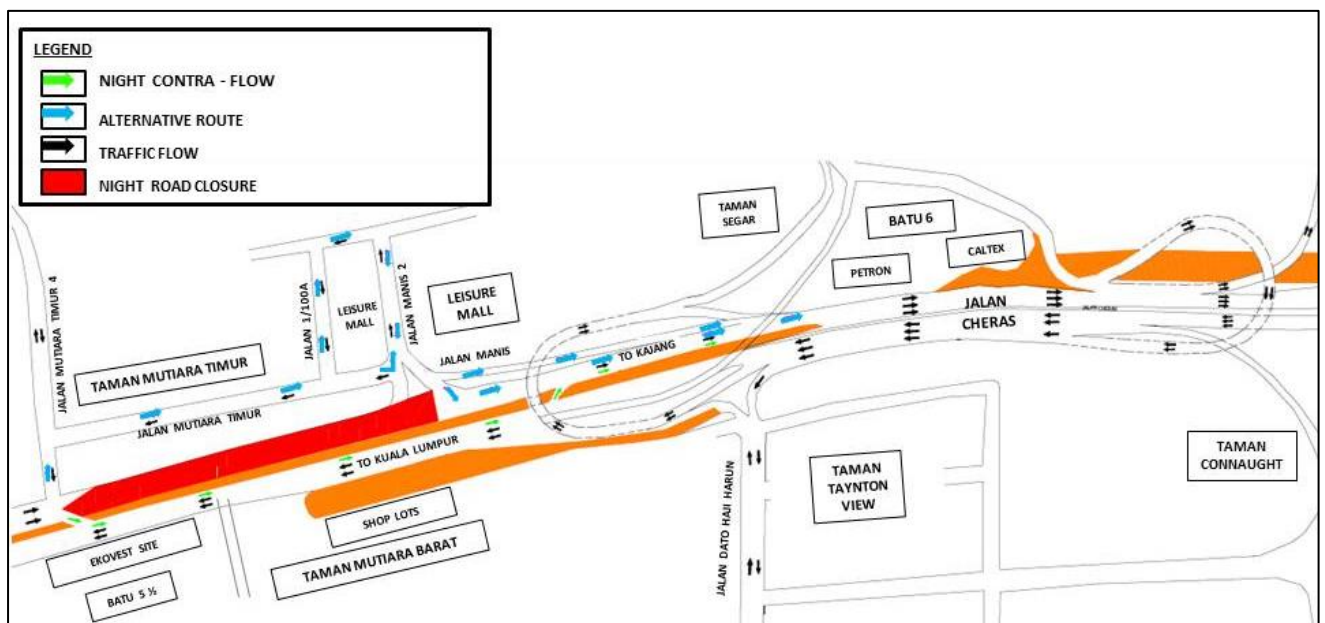
4. CONTINUATION OF NIGHT CONTRA-FLOW NEAR LEISURE MALL AT JALAN CHERAS

Date	30 May 2016 - 30 August 2016
Time	11:00PM – 5:00AM
Duration	92 days
Reason	To facilitate the construction of Taman Mutiara Station & pedestrian bridge

There will be a continuation of the night contra-flow at Jalan Cheras opposite Leisure Mall (**Kajang-bound**) from **30 May 2016 - 30 August 2016 between 11:00PM to 5:00AM, daily**.

During this night contra-flow period, motorists are advised to follow these alternatives routes:

1. **Traffic from Kuala Lumpur heading towards Kajang** will be diverted to the opposite lane (Indicated in **GREEN** in the appended map)
2. **Motorists on Jalan Cheras heading towards Leisure Mall/Taman Mutiara Timur** will be directed to take the junction at the left & turn right via Jalan Mutiara Timur to get to Leisure Mall. (Indicated in **BLUE** in the appended map)



MAP 4: CONTINUATION OF NIGHT CONTRA-FLOW NEAR LEISURE MALL AT JALAN CHERAS

For media enquiries, please contact:

Irynn Eng	Tel : +603 9174 0978	engpl@ijm.com
Siti Fadzillah	Tel : +603 7493 3965	sitifadzillah@mgjv-kvmrt.com.my

MMC GAMUDA KVMRT (PDP) SDN BHD (927050-H)
 Block A, Level 7, Menara Mustapha Kamal, PJ Trade Centre, No 8, Jalan PJU 8/8A,
 Bandar Damansara Perdana, 47820 Petaling Jaya, Selangor, Malaysia
 T: 603 7494 2200 F: 603 7722 2643 www.kvmrt.com.my