

MEDIA RELEASE
TRAFFIC MANAGEMENT PLAN
AT SAUJANA IMPIAN INTERCHANGE AND MA'AROF INTERCHANGE

1. CONTINUATION OF SLIP ROAD CLOSURE AT SAUJANA IMPIAN INTERCHANGE OF CHERAS KAJANG HIGHWAY (KAJANG AND KUALA LUMPUR-BOUND)
12 JULY 2014 – 31 JULY 2014

Location	Saujana Impian Interchange
Date	12 July 2014 to 31 July 2014
Time	24 hours
Duration	20 days
Reason	To facilitate preparation works for the construction of MRT piers

The following traffic management plan will be implemented at Saujana Impian Interchange:

1. Continuation of slip road closure at Saujana Impian Interchange (Kajang-bound) was previously scheduled to end on 11 July 2014 is now extended until 31 July 2014.

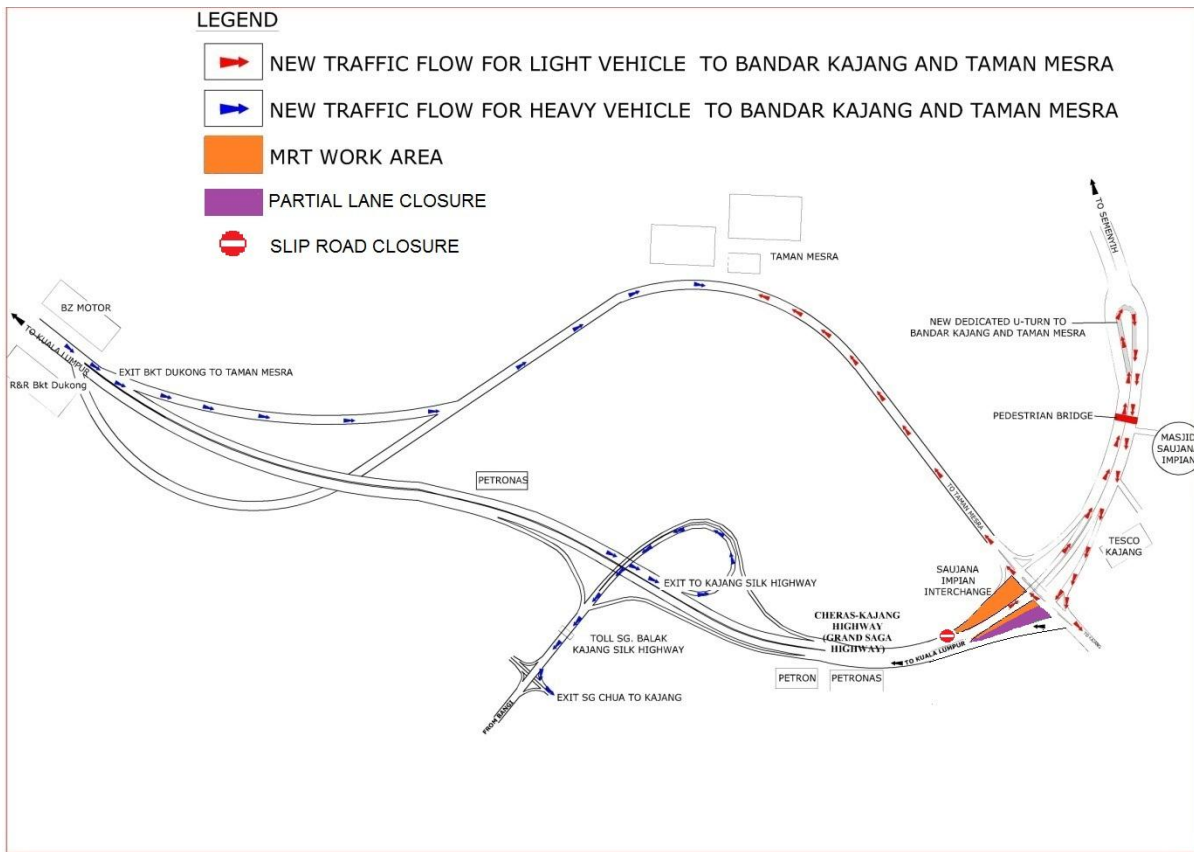
During the closure, light vehicles from Kuala Lumpur heading to Jalan Cheras, Bandar Kajang and Taman Mesra will be diverted to a dedicated U-Turn (near Tesco Kajang) towards Semenyih approximately 800 meters from the closed slip road. *(Please refer to **Red** arrow in the appended map)*

Heavy vehicles from Kuala Lumpur heading towards Bandar Kajang will be diverted to an exit at Sungai Balak interchange (Silk Highway) and can proceed to the Sungai Chua exit. Additionally, heavy vehicles heading towards Taman Mesra will be diverted to the Bukit Dukung exit. *(Please refer to **Blue** arrow in the appended map)*

2. Continuation of partial lane closure of slip road from Kajang to Cheras-Kajang Highway (KL-bound).

A partial lane closure at the right-most lane of the slip road from Kajang to Cheras-Kajang Highway (KL-bound) will **continue to be closed until 31 July 2014** *(highlighted in **Purple** colour in appended map)*. Motorist will have one traffic lane available during this period.

This traffic management plan is necessary to facilitate preparation works for the construction of MRT piers.



**2. REMINDER ON TRAFFIC MANAGEMENT PLAN AT MA'AROF INTERCHANGE
1 JULY 2014 -31 OCTOBER 2014**

Date	1 July 2014 to 31 October 2014
Time	10.00PM – 6.00AM
Duration	123 days
Reason	To facilitate station, segmental box girder (SBG) and special span launching work.

In response to public queries, we would to remind motorists that the sliproads and U-turn at Ma'arof Interchange (from KL / SPRINT Highway / Jalan Ma'arof) remain opened during the day. However, the following temporary night closures will be implemented:

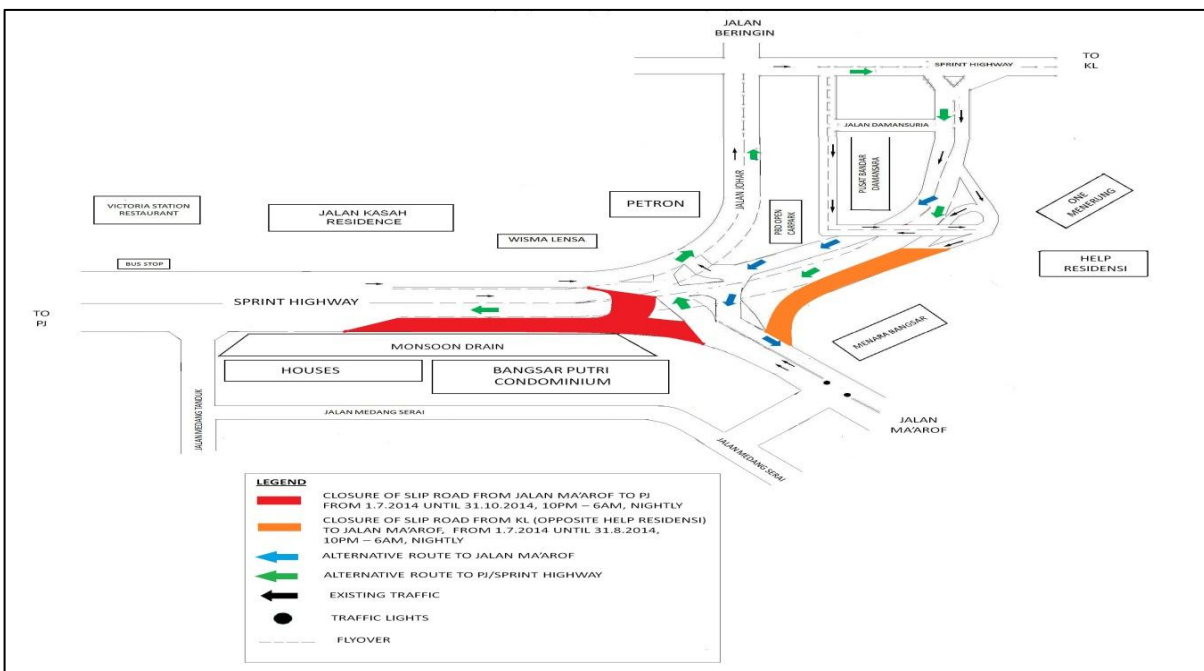
- Continuation of medium-term night closure of slip road from Kuala Lumpur (opposite HELP Residensi) to Jalan Ma'arof.**
The slip road from Kuala Lumpur to Jalan Ma'arof will continue to be closed until **31 August 2014, between 10.00pm to 6.00am, nightly.**

During the closure, motorists from Kuala Lumpur heading to Jalan Ma'arof will be diverted passing HELP University open car park, going underneath the SPRINT flyover heading uphill back onto Jalan Ma'arof (highlighted in **Orange** colour in appended map).

2. Continuation of long-term night closure of slip road from Jalan Ma'arof to Sprint Highway (PJ-bound) and U-turn (to return to PJ).

This slip road and U-turn will continue to be closed from **1 July 2014 to 31 October 2014, between 10.00pm until 6.00am, nightly.**

During the closure, motorists from Jalan Ma'arof (from Bangsar) heading to Sprint Highway (PJ-bound) will be diverted to Jalan Johar, going around Pusat Bandar Damansara Complex and back to the Sprint Highway (highlighted in **Red** colour in appended map).



For media enquiries, please contact:

Zamri Zakariah (Enquiry for item 1)

Subba Rao (Enquiry for item 2)

Ong Jee Lian

Tel: +6012 916 2000

Tel: +6019 1136806

Tel : +603 7493 3963

zamri.zakariah@uembuilders.uemnet.com

srao@sunway.com.my

jeelian@mgjv-kvmrt.com.my