

**MEDIA RELEASE**

**TEMPORARY PARTIAL LANE CLOSURES AT JALAN BUKIT BINTANG, SPRINT HIGHWAY AND JALAN SEMANTAN**

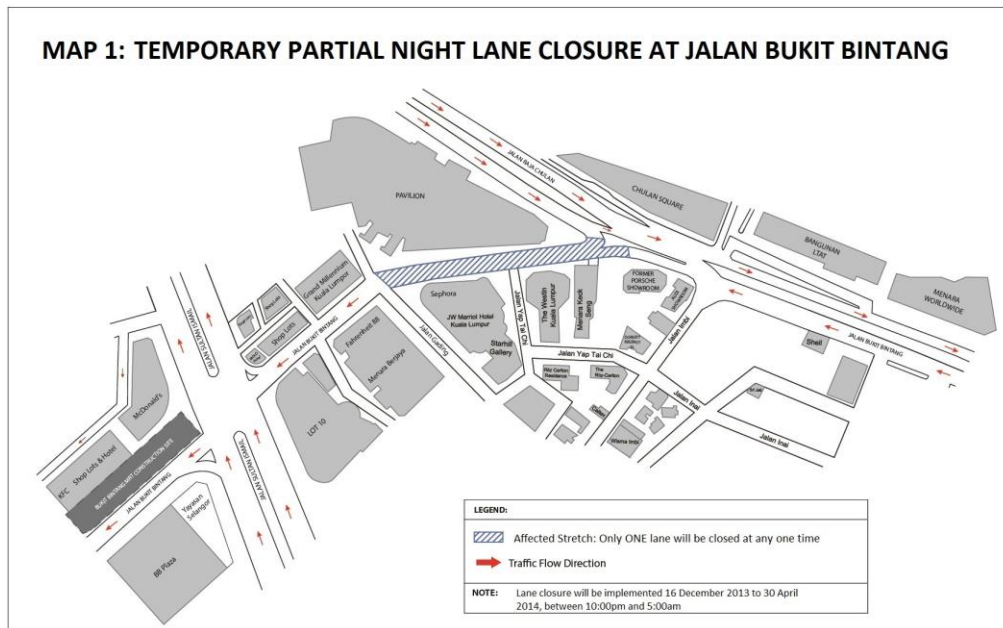
Kuala Lumpur, 16 December 2013: Mass Rapid Transit Corporation Sdn Bhd (MRT Corp) wishes to announce the following:

**i. Temporary partial night lane closure along Jalan Bukit Bintang**

There will be a temporary partial night lane closure along Jalan Bukit Bintang, between Menara Keck Seng and the front of Pavilion from 16 December 2013 to 30 April 2014, between 10:00pm and 5:00am. (Please see appended Map 1.)

The temporary closure which involves a 350-metre stretch will be implemented in stages, with only one lane closed at any one time. The closure will not be implemented on Fridays and Saturdays and the eve of public holidays.

The closure is necessary to facilitate ground treatment and construction of intervention block for the MRT Project.

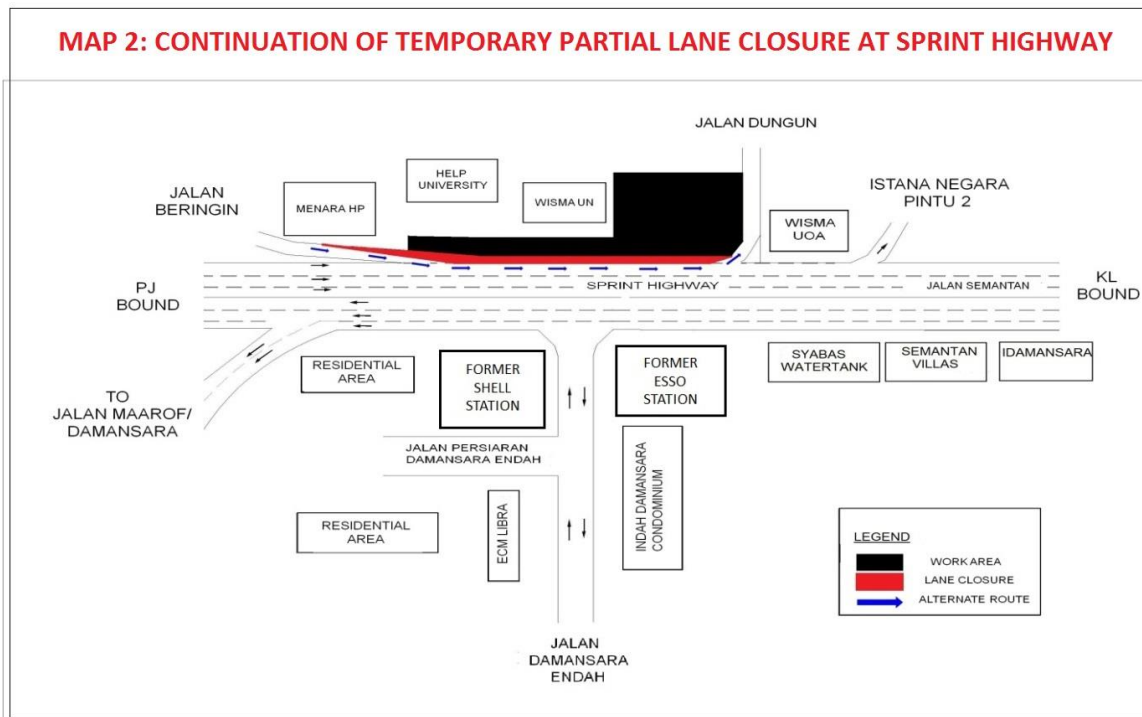


**ii. Continuation of temporary partial lane closure at Sprint Highway (KL-bound)**

There will be a continuation of the temporary left-most lane closure at the Sprint Highway (KL-bound) near Wisma UN from 17 December 2013 to 17 June 2014, from 10:00am to 4:00pm and 9:00pm to 5:00pm, daily.

This 200-metre closure stretch starts at the slip road from Jalan Beringin (near Menara HP) to the junction of Jalan Dungun. (Please see appended Map 2.)

The closure is necessary to facilitate the relocation of utilities, caisson, concreting and pier work for the construction of the Semantan Station.



### iii. Long-term closures at Jalan Semantan

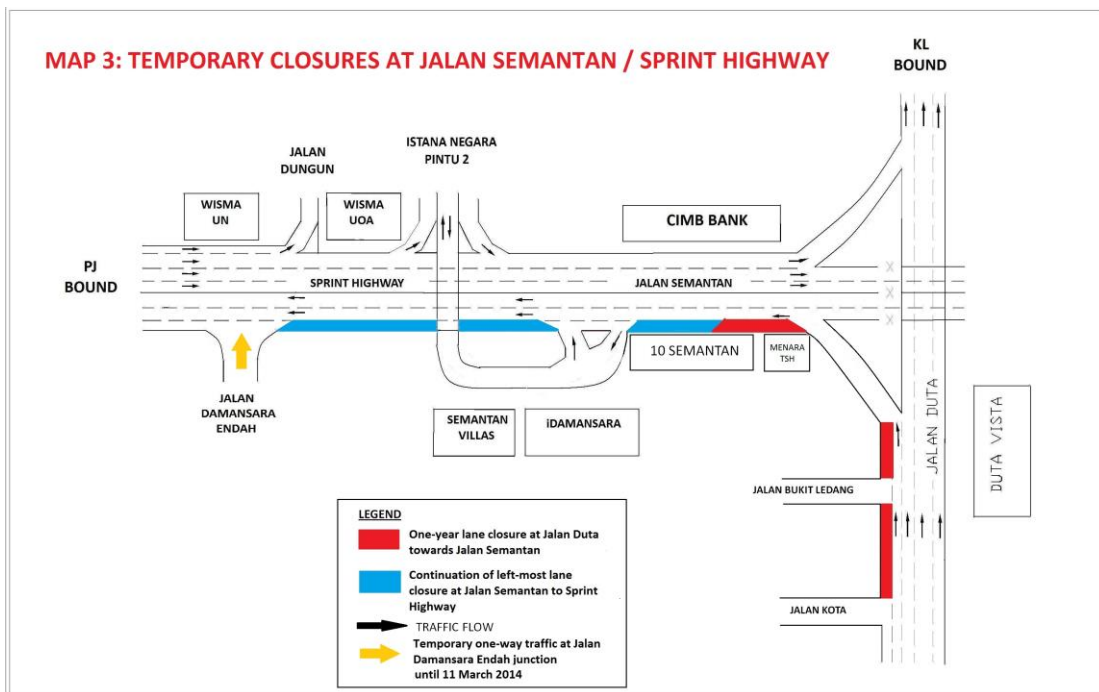
- **One-year lane closure at Jalan Duta towards Jalan Semantan (PJ-bound)**

The left-most lane of Jalan Duta up to Jalan Semantan, will be closed for **one (1) year starting 17 December 2013, 24 hours daily**. The closure begins from the junction of Jalan Kota to Jalan Semantan (in front of 10 Semantan). *(Please refer to appended Map 3.)*

- **Continuation of left-most lane closure at Jalan Semantan to Sprint Highway (PJ-bound)**

The left-most lane of Jalan Semantan / Sprint Highway will continue to be closed during off-peak hours, from **10:00am to 4:00pm and 9:00pm to 6:00am until 12 June 2014**. This temporary one-year closure which was first implemented in June 2013 starts in front of 10 Semantan to the junction of Jalan Damansara Endah (PJ-bound).

The closures at Jalan Semantan are necessary to facilitate the relocation of utilities, drainage works, bore piling, concreting and piers work in preparation for the construction of MRT piers leading to the future Semantan Station.



ENDS



## **About the MRT Project**

*MRT is a new rail transport system for the Klang Valley. It is part of the government's Greater Kuala Lumpur/Klang Valley's National Key Economic Area (NKEA), under the Economic Transformation Programme. The Sungai Buloh – Kajang (SBK) Line runs for 51kms, from the north-west town of Sg Buloh to the south-east city town of Kajang. Upon completion, it will comprise 31 stations, and serve 1.2 million people along the route. It will also have strategic integration with KL's existing rail transport network, namely the LRT, Monorail and KTM Komuter, as well as intra and inter-city bus routes. The end result will be better connectivity for KL and its surrounding cities, while reducing the number of cars that enter the capital.*

*MRT Corp wishes to apologise for any temporary inconvenience caused to the public during the construction of this world-class public transport facility that will benefit Malaysians at large. For more information on traffic diversion, the public can visit the MRT website at [www.mymrt.com.my](http://www.mymrt.com.my) or [www.mymrt-underground.com.my](http://www.mymrt-underground.com.my), twitter @MRTMalaysia or twitter @MyMRT Underground or call the MRT Hotline at 1-800-82-6868.*

*Motorists are reminded to drive carefully near MRT worksites and to follow directional signs. Safety barriers, hoardings and traffic cones will be installed at the work sites to ensure road users and pedestrians are well-informed of on-going works. In addition, a 24-hour MRT Ronda will be patrolling along the routes to attend to any emergencies.*

**For media enquiries, please contact:**

**Mr. Leong Shen-Li**  
MRT Corp

03-20813182 / [leong.shen-li@mymrt.com.my](mailto:leong.shen-li@mymrt.com.my)

**Ms. Nadia Azmi**  
MRT Corp

03-20813185 / [nadia.azmi@mymrt.com.my](mailto:nadia.azmi@mymrt.com.my)