

MEDIA RELEASE

TEMPORARY CLOSURES AT JALAN BUKIT BINTANG AND CHERAS

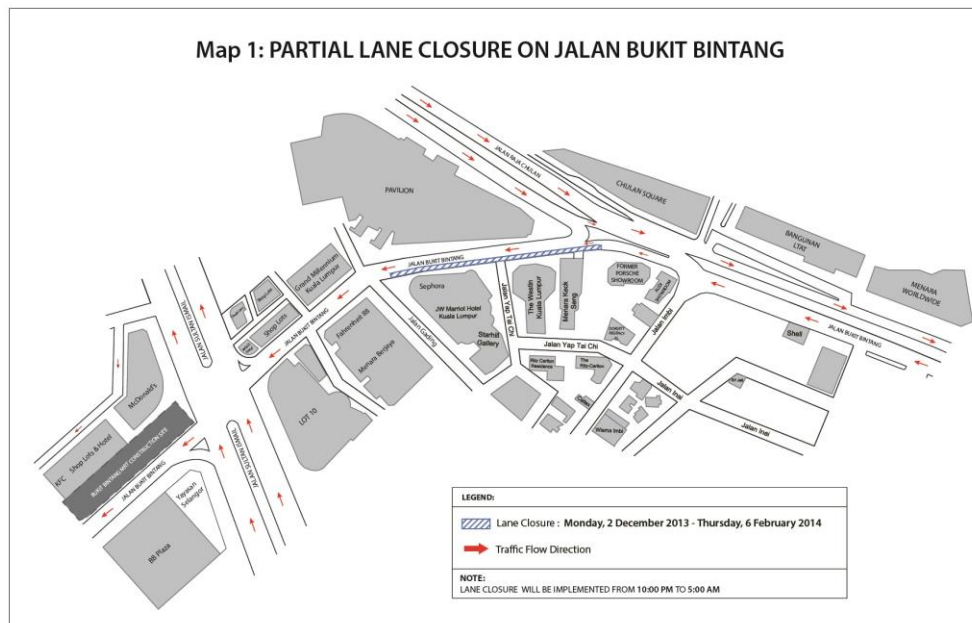
Kuala Lumpur, 29 November 2013: Mass Rapid Transit Corporation Sdn Bhd (MRT Corp) wishes to announce the following closures:

i. Partial lane closure at Jalan Bukit Bintang

There will be a partial lane closure at Jalan Bukit Bintang, located between Menara Keck Seng and Starhill Gallery from 2 December 2013 to 6 February 2014, between 10:00pm and 5:00am daily.

The closure involves a 400-metre stretch on the left-most lane of Jalan Bukit Bintang, to facilitate soil investigation works for the construction of the MRT Project. (Please see appended Map 1.)

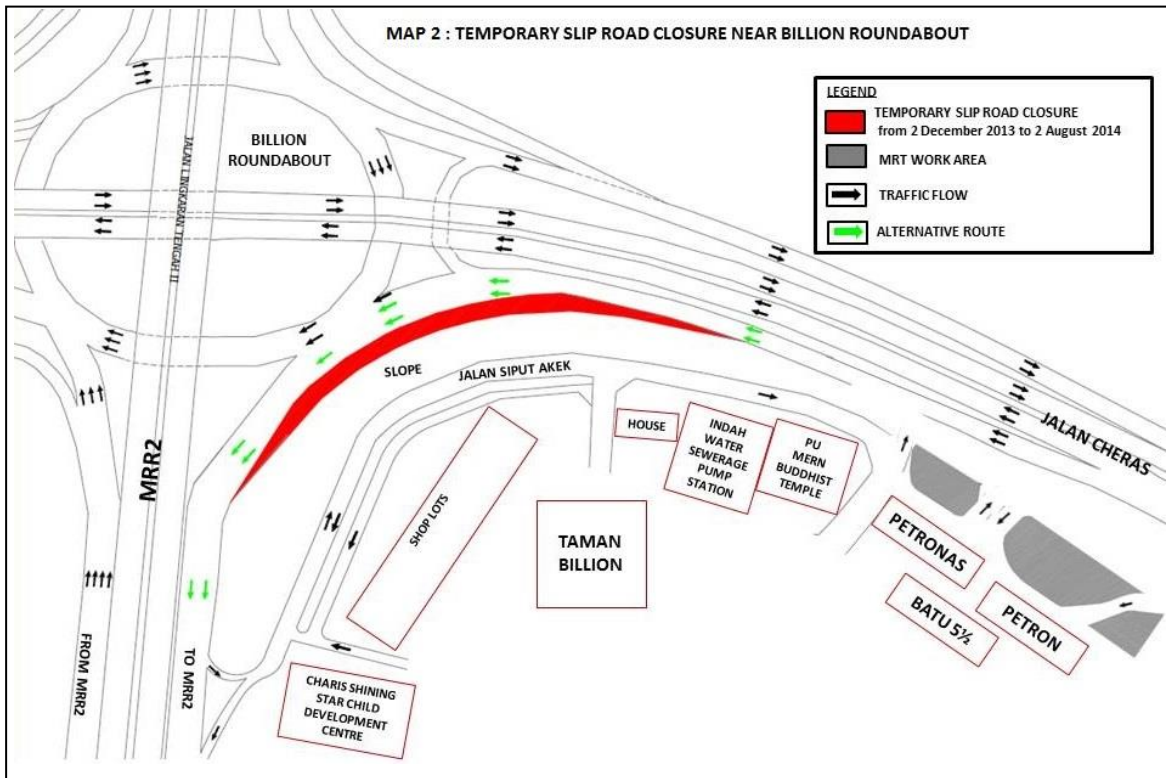
No closure will be implemented on Friday and Saturday nights.



ii. Slip road closure at Jalan Cheras near Taman Billion Cheras Roundabout (KL-bound)

The slip road at Jalan Cheras heading to Middle Ring Road II (MRR2) Highway from Kajang near Taman Billion Cheras Roundabout will be closed for a stretch of 150 metres, effective 2 December 2013 to 2 August 2014.

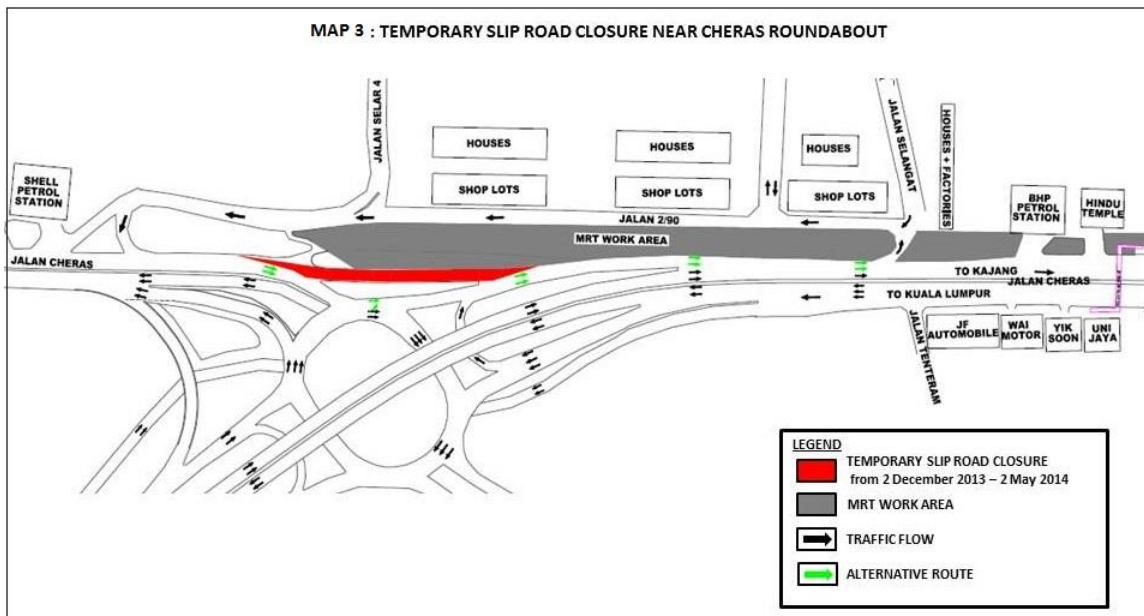
Motorists from Kajang heading to MRR2 will be directed to the Taman Billion Cheras Roundabout. This temporary closure is necessary to facilitate preparation of platform, piling and pier construction works. *(Please see appended Map 2.)*



iii. Slip road closure at Jalan Cheras near Cheras Roundabout (Kajang-bound)

The slip road at Jalan Cheras beside the motorcycle lane near the Cheras Roundabout will be closed for a stretch of 100 metres, effective 2 December 2013 to 2 May 2014.

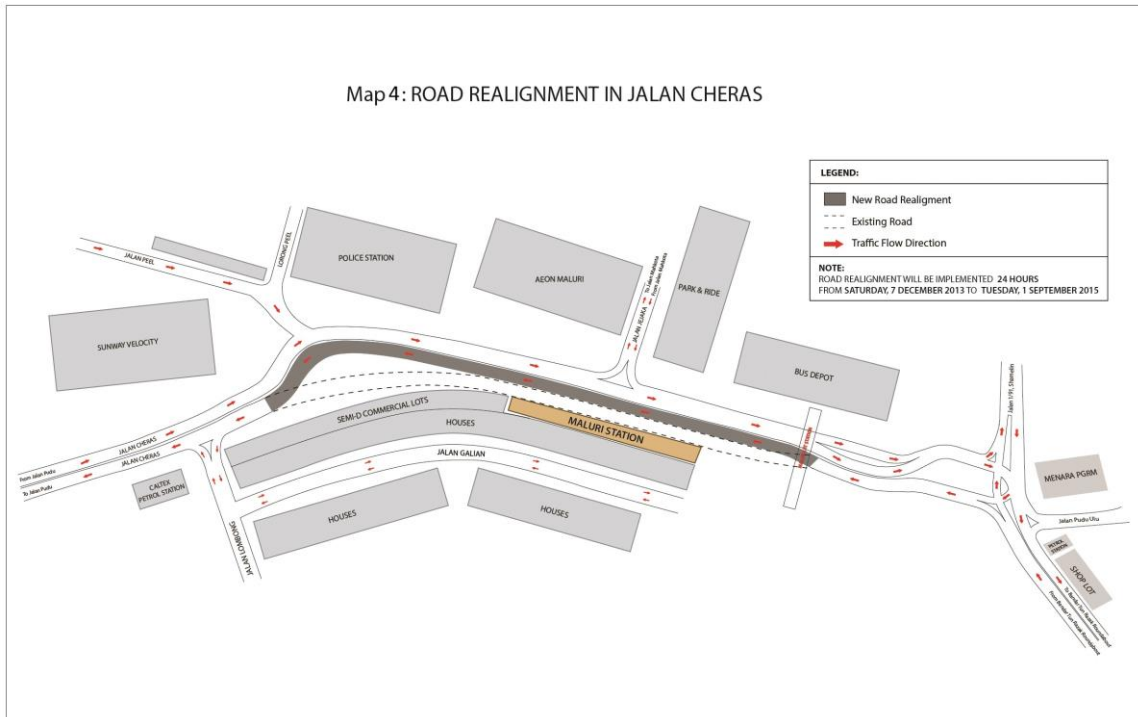
Motorists from Jalan Cheras heading towards Kajang will be directed to the Cheras Roundabout. This temporary closure is necessary to facilitate piling and pier construction works. (Please see appended Map 3.)



iv. Road Realignment at Jalan Cheras (Jalan Pudu-bound)

The road at Jalan Cheras heading towards Jalan Pudu will be realigned, between 7 December 2013 and 1 September 2015.

The 350-metre stretch road, involving three lanes will be realigned to facilitate construction work for the Maluri MRT station. The road will remain with three lanes. *(Please see appended Map 4.)*



ENDS



About the MRT Project

MRT is a new rail transport system for the Klang Valley. It is part of the government's Greater Kuala Lumpur/Klang Valley's National Key Economic Area (NKEA), under the Economic Transformation Programme. The Sungai Buloh – Kajang (SBK) Line runs for 51kms, from the north-west town of Sg Buloh to the south-east city town of Kajang. Upon completion, it will comprise 31 stations, and serve 1.2 million people along the route. It will also have strategic integration with KL's existing rail transport network, namely the LRT, Monorail and KTM Komuter, as well as intra and inter-city bus routes. The end result will be better connectivity for KL and its surrounding cities, while reducing the number of cars that enter the capital.

MRT Corp wishes to apologise for any temporary inconvenience caused to the public during the construction of this world-class public transport facility that will benefit Malaysians at large. For more information on traffic diversion, the public can visit the MRT website at www.mymrt.com.my or www.mymrt-underground.com.my, twitter @MRTMalaysia or twitter @MyMRT Underground or call the MRT Hotline at 1-800-82-6868.

Motorists are reminded to drive carefully near MRT worksites and to follow directional signs. Safety barriers, hoardings and traffic cones will be installed at the work sites to ensure road users and pedestrians are well-informed of on-going works. In addition, a 24-hour MRT Ronda will be patrolling along the routes to attend to any emergencies.

For media enquiries, please contact:

Mr. Leong Shen-Li
MRT Corp

03-20813182 / leong.shen-li@mymrt.com.my

Ms. Nadia Azmi
MRT Corp

03-20813185 / nadia.azmi@mymrt.com.my