

**MEDIA RELEASE**

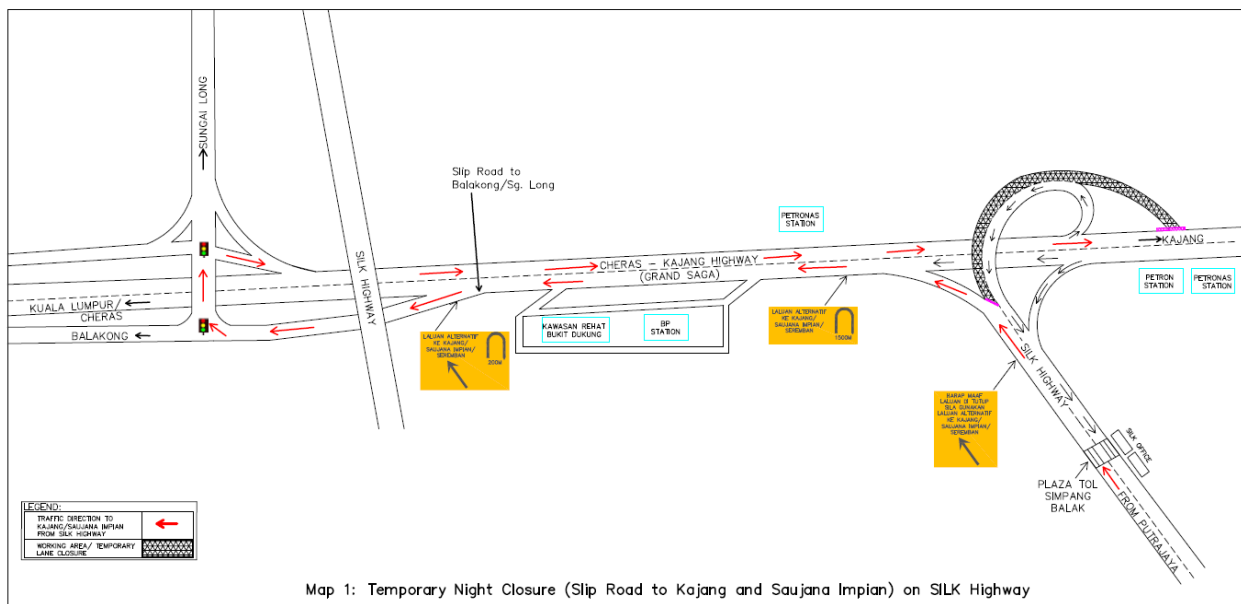
**TEMPORARY CLOSURES AT SILK HIGHWAY AND  
JALAN CHANGKAT BUKIT BINTANG**

Kuala Lumpur, 19 November 2013: Mass Rapid Transit Corporation Sdn Bhd (MRT Corp) wishes to announce the following closures:

- i. Continuation of temporary night road closure of slip road to Kajang and Saujana Impian at SILK Highway**

There will be a continuation of the temporary night closure of the slip road to Kajang and Saujana Impian at SILK Highway for eight (8) days from **20 November 2013 to 27 November 2013, from 11:00pm to 5:00am.**

The continuation of the 800-metre night closure stretch is needed to carry on the installation of segmental box girders (SBG). As an alternative, motorists heading towards Kajang/Saujana Impian are advised to use Cheras-Kajang (Grand Saga) Highway. *(Please see appended Map 1.)*

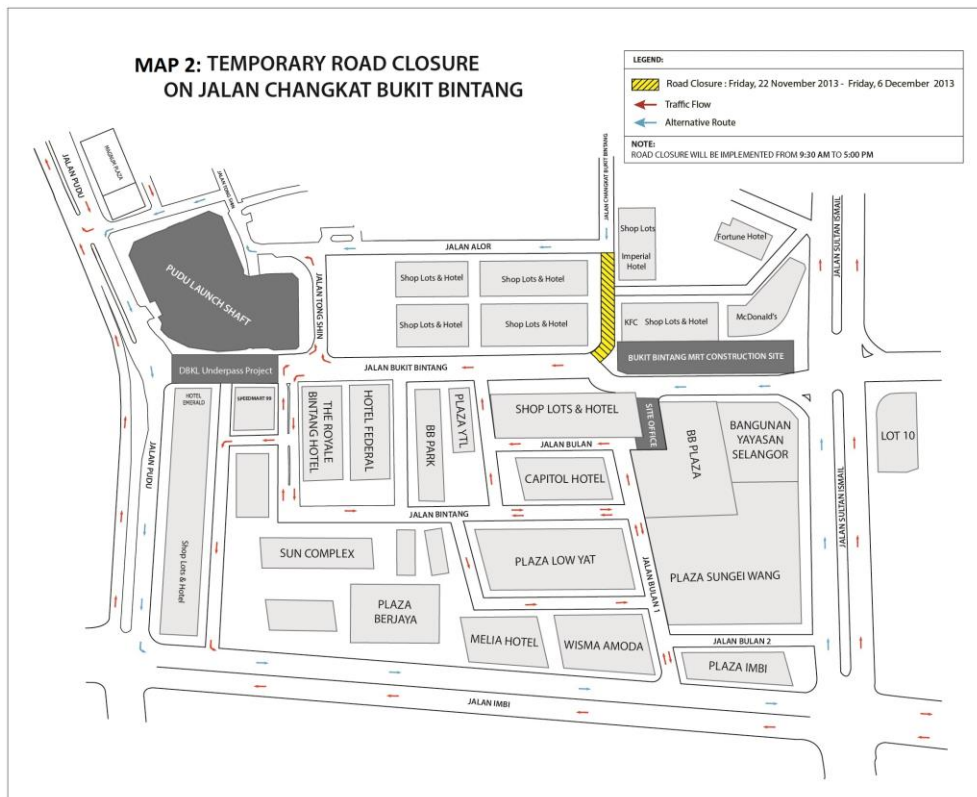


**ii. Two-week road closure at Jalan Changkat Bukit Bintang**

There will be a road closure at Jalan Changkat Bukit Bintang for about two (2) weeks from 22 November 2013 to 6 December 2013, from 9:30am to 5:00pm.

The two-week closure will involve a 30-metre stretch of the road located next to the KFC Restaurant at Jalan Changkat Bukit Bintang and will not allow traffic to access to Jalan Bukit Bintang. Alternative route will be provided. (Please see appended Map 2.)

The closure is necessary to facilitate sheet pile installation work in the area and it is a key part of our safety practice at all MRT construction sites.



**ENDS**



## About the MRT Project

*MRT is a new rail transport system for the Klang Valley. It is part of the government's Greater Kuala Lumpur/Klang Valley's National Key Economic Area (NKEA), under the Economic Transformation Programme. The Sungai Buloh – Kajang (SBK) Line runs for 51kms, from the north-west town of Sg Buloh to the south-east city town of Kajang. Upon completion, it will comprise 31 stations, and serve 1.2 million people along the route. It will also have strategic integration with KL's existing rail transport network, namely the LRT, Monorail and KTM Komuter, as well as intra and inter-city bus routes. The end result will be better connectivity for KL and its surrounding cities, while reducing the number of cars that enter the capital.*

*MRT Corp wishes to apologise for any temporary inconvenience caused to the public during the construction of this world-class public transport facility that will benefit Malaysians at large. For more information on traffic diversion, the public can visit the MRT website at [www.mymrt.com.my](http://www.mymrt.com.my) or [www.mymrt-underground.com.my](http://www.mymrt-underground.com.my), twitter @MRTMalaysia or twitter @MyMRT Underground or call the MRT Hotline at 1-800-82-6868.*

*Motorists are reminded to drive carefully near MRT worksites and to follow directional signs. Safety barriers, hoardings and traffic cones will be installed at the work sites to ensure road users and pedestrians are well-informed of on-going works. In addition, a 24-hour MRT Ronda will be patrolling along the routes to attend to any emergencies.*

***For media enquiries, please contact:***

***Mr. Leong Shen-Li***  
*MRT Corp*

***03-20813182 / [leong.shen-li@mymrt.com.my](mailto:leong.shen-li@mymrt.com.my)***

***Ms. Nadia Azmi***  
*MRT Corp*

***03-20813185 / [nadia.azmi@mymrt.com.my](mailto:nadia.azmi@mymrt.com.my)***