

MEDIA RELEASE

ONE-YEAR CLOSURE AT SPRINT HIGHWAY

Flyover at Maarof Interchange until exit to Jalan Batai Barat

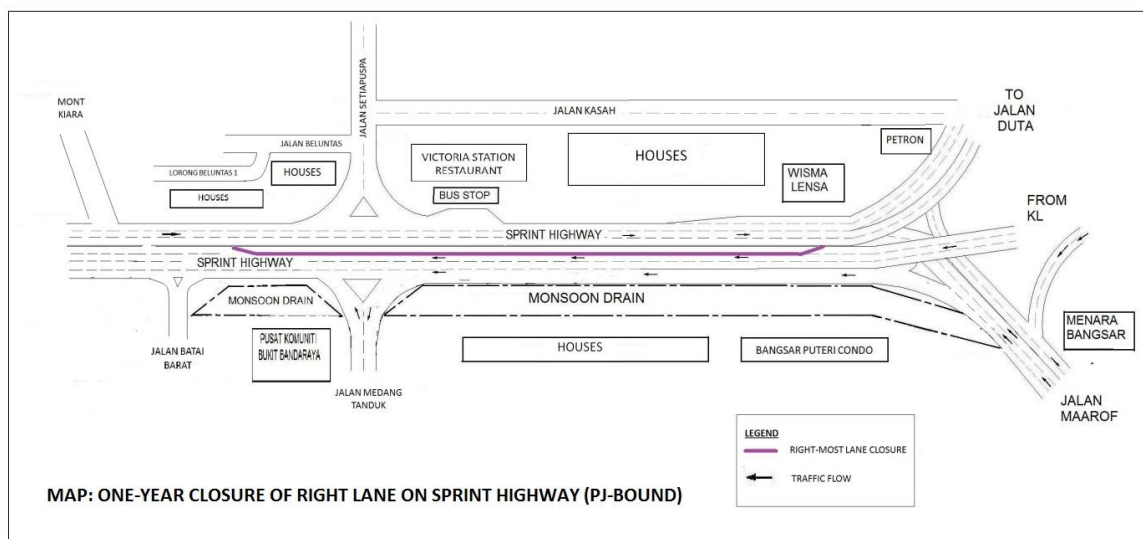
Kuala Lumpur, 18 November 2013: Mass Rapid Transit Corporation Sdn Bhd (MRT Corp) wishes to announce that the **right-most lane** at Sprint Highway (PJ-bound) will undergo a permanent **one (1) year closure until 16 November 2014**.

This 850-metre closure stretch starts at the flyover at Maarof Interchange (PJ-bound), ending just before the exit to Jalan Batai Barat. During the one (1) year closure, two lanes will be available for motorists at Sprint Highway. *(Please refer to appended map.)*

“A trial closure of the same stretch was conducted extensively for two weeks since 24 October 2013 with Lebuhraya Lembaga Malaysia (LLM),” said En Amir Mahmood Razak, Director of Strategic Communications and Public Relations, MRT Corp.

He added, “Results have shown no severe impact on PJ-bound traffic at Sprint Highway and so we have decided to proceed with a one-year closure of the lane. We will also take the necessary measures to ensure that public safety is not compromised.”

The closure is necessary to facilitate hacking work, boring, concreting, pile cap and pier work in preparation for the construction of MRT piers.



ENDS



About the MRT Project

MRT is a new rail transport system for the Klang Valley. It is part of the government's Greater Kuala Lumpur/Klang Valley's National Key Economic Area (NKEA), under the Economic Transformation Programme. The Sungai Buloh – Kajang (SBK) Line runs for 51kms, from the north-west town of Sg Buloh to the south-east city town of Kajang. Upon completion, it will comprise 31 stations, and serve 1.2 million people along the route. It will also have strategic integration with KL's existing rail transport network, namely the LRT, Monorail and KTM Komuter, as well as intra and inter-city bus routes. The end result will be better connectivity for KL and its surrounding cities, while reducing the number of cars that enter the capital.

MRT Corp wishes to apologise for any temporary inconvenience caused to the public during the construction of this world-class public transport facility that will benefit Malaysians at large. For more information on traffic diversion, the public can visit the MRT website at www.mymrt.com.my or www.mymrt-underground.com.my, twitter [@MRTMalaysia](https://twitter.com/MRTMalaysia) or twitter [@MyMRT Underground](https://twitter.com/MyMRTUnderground) or call the MRT Hotline at 1-800-82-6868.

Motorists are reminded to drive carefully near MRT worksites and to follow directional signs. Safety barriers, hoardings and traffic cones will be installed at the work sites to ensure road users and pedestrians are well-informed of on-going works. In addition, a 24-hour MRT Ronda will be patrolling along the routes to attend to any emergencies.

For media enquiries, please contact:

Mrs. Ong Jee Lian
MMC-Gamuda KVMRT (PDP) Sdn Bhd

03-74933963 / jeelian@mgjv-kvmrt.com.my

Ms. Nadia Azmi
MRT Corp

03-20813185 / nadia.azmi@mymrt.com.my