

MEDIA RELEASE

TEMPORARY CLOSURES AT JALAN LOKE YEW AND JALAN DAMANSARA

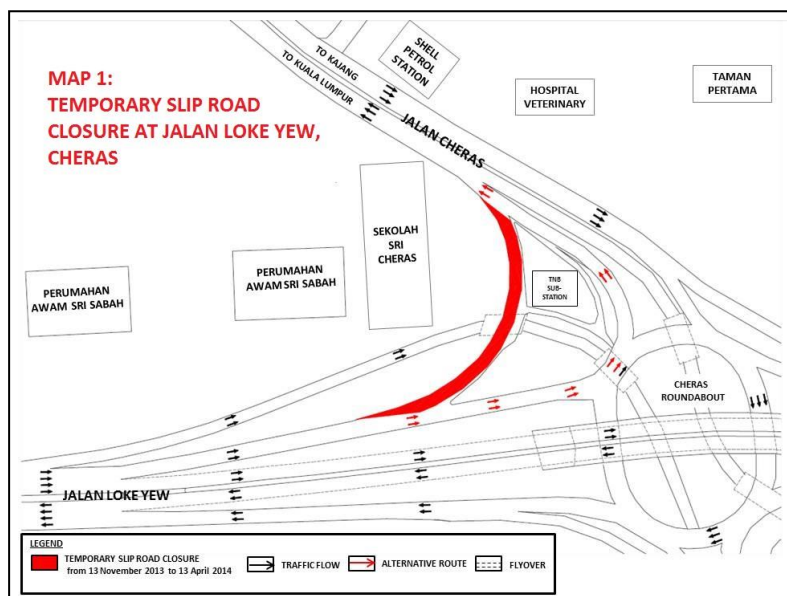
Kuala Lumpur, 11 November 2013: Mass Rapid Transit Corporation Sdn Bhd (MRT Corp) wishes to announce the following closures:

- i. **Temporary closure of slip road from Jalan Loke Yew heading towards Jalan Cheras**

There will be a temporary closure of the slip road from Jalan Loke Yew heading towards Jalan Cheras, near the Cheras roundabout for five (5) months effective **13 November 2013 to 13 April 2014**.

The slip road closure is to facilitate pier construction work for the MRT Sungai Buloh-Kajang Line.

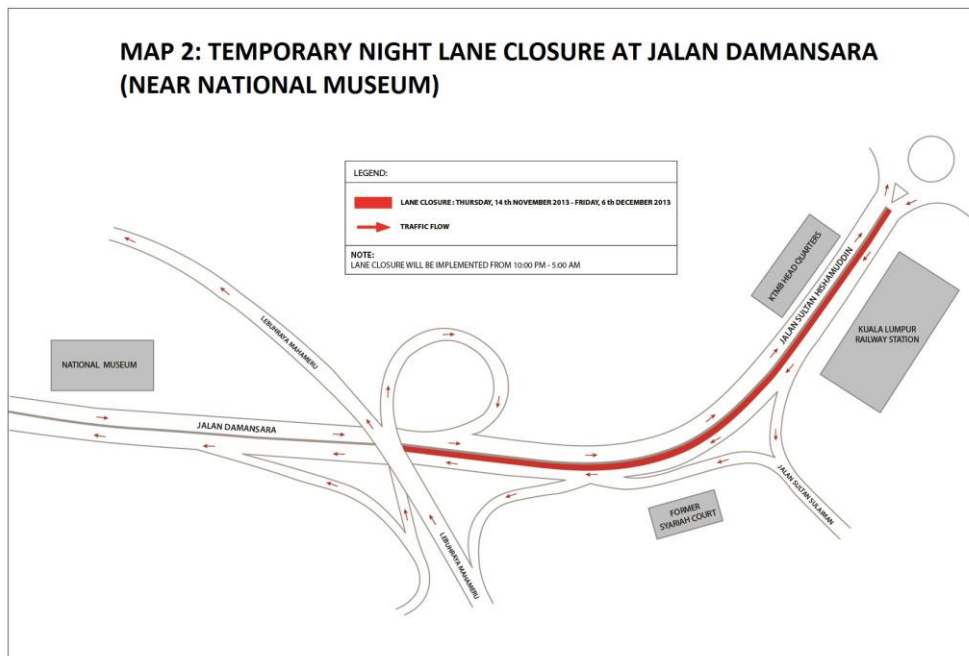
As an alternative to access Jalan Cheras (KL-bound), motorists coming from Jalan Loke Yew are advised to use the Cheras roundabout to get onto Jalan Cheras. *(Please see appended Map 1.)*



ii. Temporary night lane closure at Jalan Damansara (near National Museum)

There will be a temporary night closure of the right-most lane at Jalan Damansara, heading towards Jalan Bangsar, near the National Museum from **14 November 2013 to 6 December 2013, between 10:00pm to 5:00am daily.** (Please see appended Map 2.)

The 150-metre lane closure from the roundabout in front of the KTMB head office building to the front of Bangunan Sulaiman (former Syariah Court building) is to facilitate soil investigation works.



ENDS



About the MRT Project

MRT is a new rail transport system for the Klang Valley. It is part of the government's Greater Kuala Lumpur/Klang Valley's National Key Economic Area (NKEA), under the Economic Transformation Programme. The Sungai Buloh – Kajang (SBK) Line runs for 51kms, from the north-west town of Sg Buloh to the south-east city town of Kajang. Upon completion, it will comprise 31 stations, and serve 1.2 million people along the route. It will also have strategic integration with KL's existing rail transport network, namely the LRT, Monorail and KTM Komuter, as well as intra and inter-city bus routes. The end result will be better connectivity for KL and its surrounding cities, while reducing the number of cars that enter the capital.

MRT Corp wishes to apologise for any temporary inconvenience caused to the public during the construction of this world-class public transport facility that will benefit Malaysians at large. For more information on traffic diversion, the public can visit the MRT website at www.mymrt.com.my or www.mymrt-underground.com.my, twitter [@MRTMalaysia](https://twitter.com/MRTMalaysia) or twitter [@MyMRT Underground](https://twitter.com/MyMRTUnderground) or call the MRT Hotline at 1-800-82-6868.

For media enquiries, please contact:

Mr. Leong Shen-Li
MRT Corp

03-20813182 / leong.shen-li@mymrt.com.my

Ms. Nadia Azmi
MRT Corp

03-20813185 / nadia.azmi@mymrt.com.my