

MEDIA RELEASE

**CONTINUATION OF TRIAL LANE CLOSURE AT SPRINT
HIGHWAY (PJ-BOUND)**

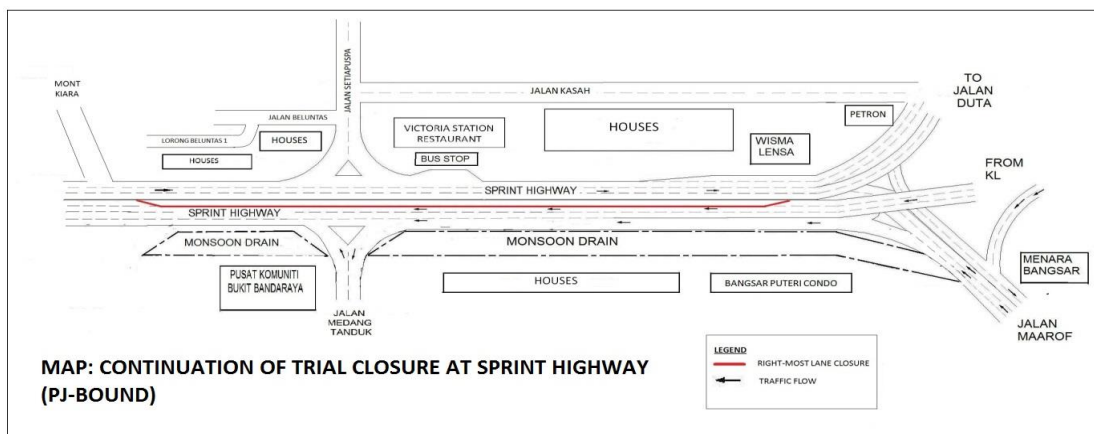
After flyover at Maarof Interchange to Bukit Kiara Interchange

Kuala Lumpur, 8 November 2013: Mass Rapid Transit Corporation Sdn Bhd (MRT Corp) wishes to announce the continuation of the trial closure for the **right-most lane** at Sprint Highway (PJ-bound) from **8 November 2013, 12:00am to 15 November 2013, for 24 hours each day**.

This 1.1km trial closure stretches after the flyover at Maarof Interchange to the Bukit Kiara Interchange. During this trial closure, two lanes will be available for motorists at Sprint Highway. *(Please refer to appended map.)*

This trial closure which began on 24 October 2013 is extended to allow MRT Corp and its contractors, together with the highway authorities to further study the impact of the closure on a working weekday apart from the recent holiday season.

Subsequent to the success of the continuation of this trial lane closure until 15 November 2013, a permanent road closure will take place for a period of one (1) year, which will be applied soon after to accommodate the construction of the new MRT Pusat Bandar Damansara Station.





About the MRT Project

MRT is a new rail transport system for the Klang Valley. It is part of the government's Greater Kuala Lumpur/Klang Valley's National Key Economic Area (NKEA), under the Economic Transformation Programme. The Sungai Buloh – Kajang (SBK) Line runs for 51kms, from the north-west town of Sg Buloh to the south-east city town of Kajang. Upon completion, it will comprise 31 stations, and serve 1.2 million people along the route. It will also have strategic integration with KL's existing rail transport network, namely the LRT, Monorail and KTM Komuter, as well as intra and inter-city bus routes. The end result will be better connectivity for KL and its surrounding cities, while reducing the number of cars that enter the capital.

MRT Corp wishes to apologise for any temporary inconvenience caused to the public during the construction of this world-class public transport facility that will benefit Malaysians at large. For more information on traffic diversion, the public can visit the MRT website at www.mymrt.com.my or www.mymrt-underground.com.my, twitter [@MRTMalaysia](https://twitter.com/MRTMalaysia) or twitter [@MyMRT Underground](https://twitter.com/MyMRTUnderground) or call the MRT Hotline at 1-800-82-6868.

For media enquiries, please contact:

Mrs. Ong Jee Lian
MMC-Gamuda KVMRT (PDP) Sdn Bhd

03-74933963 / jeelian@mgjv-kvmrt.com.my

Ms. Nadia Azmi
MRT Corp

03-20813185 / nadia.azmi@mymrt.com.my