

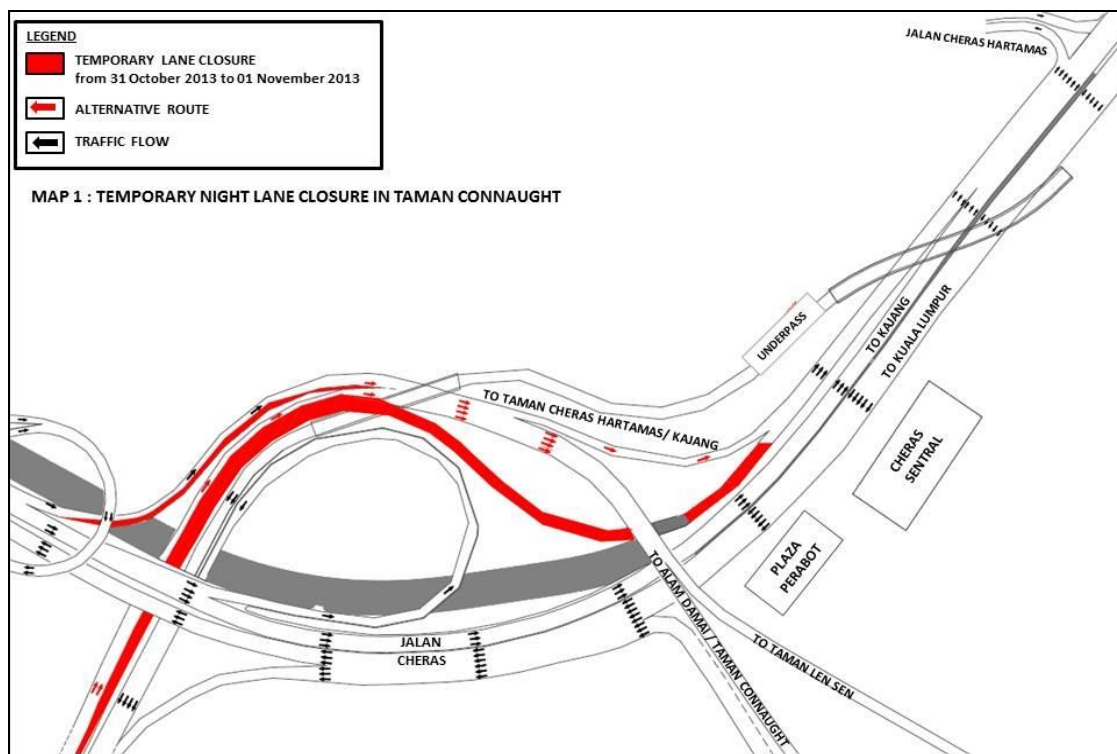
MEDIA RELEASE

TEMPORARY PARTIAL NIGHT LANE CLOSURES IN CHERAS

Kuala Lumpur, 29 October 2013: Mass Rapid Transit Corporation Sdn Bhd (MRT Corp) wishes to announce the following traffic management plan:

- **Jalan Cheras, near Cheras Sentral (Kajang-bound)**

The left-most lane from KM6.20 near the pedestrian bridge to KM6.45 before the junction turning into Taman Cheras Hartamas will be partially closed for a stretch of 260 metres, effective 31 October 2013 to 31 January 2014, from 10:00pm to 5:00am daily. (Please see appended Map 1.)

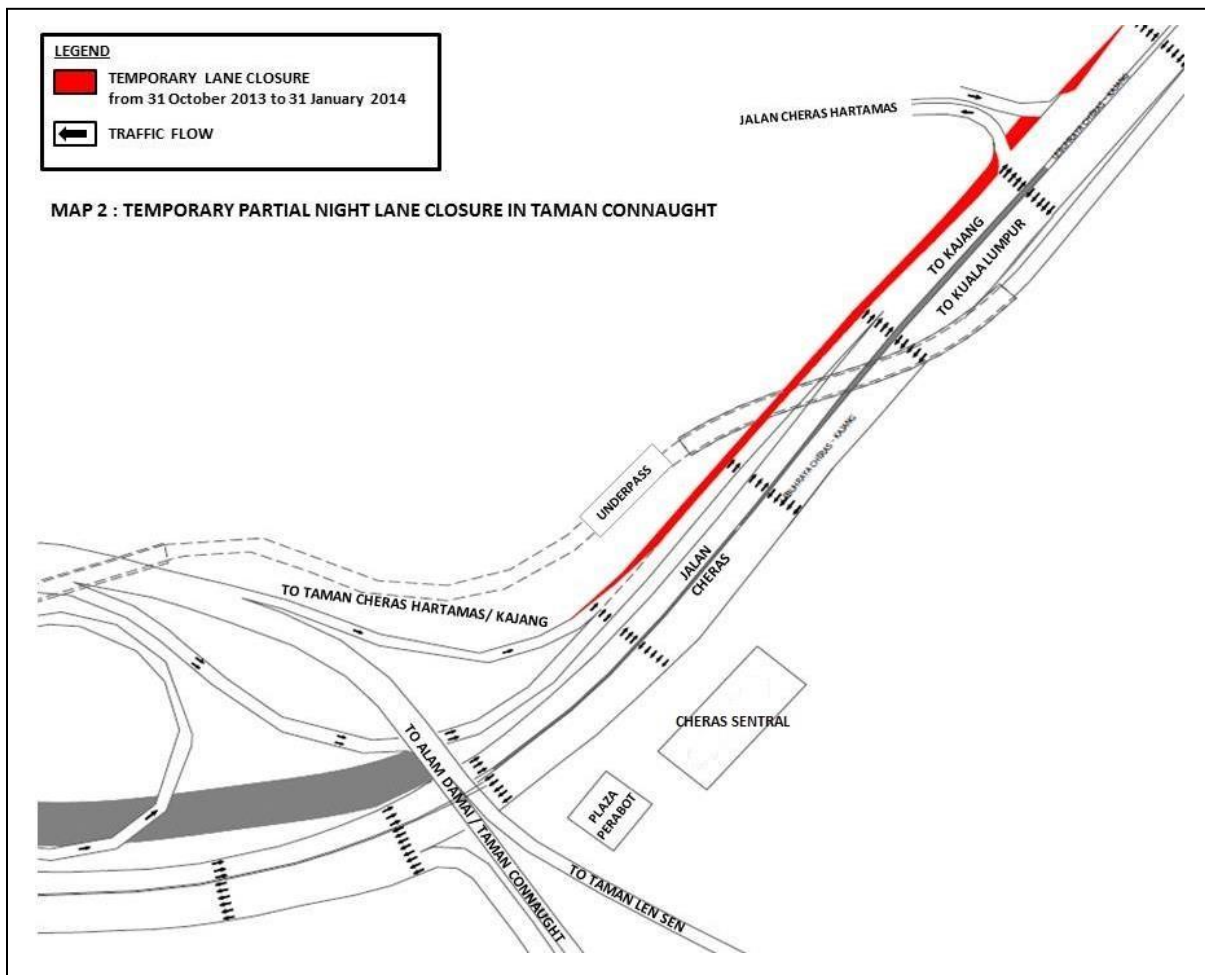


- **Taman Connaught (Kajang-bound)**

The slip road from Taman Connaught heading towards Jalan Cheras (Kajang-bound) and the right-most lane on East-West Link will be partially closed for a stretch of 200 metres for **TWO nights, effective 31 October 2013 to 1 November 2013, from 10:00pm to 5:00am daily.**

This closure involves the lane from Jalan Cheras near Leisure Mall (heading towards Alam Damai and Taman Len Sen). As an alternative, motorists from Taman Connaught and Leisure Mall are advised to use the left-most lane to get into Taman Cheras Hartamas or Kajang. The right-most lane from East-West Link will be closed to enable sufficient taper for the slip road closure.

These night lane closures are to facilitate drainage diversion works for the MRT Sungai Buloh – Kajang Line. *(Please see appended Map 2.)*



ENDS



About the MRT Project

MRT is a new rail transport system for the Klang Valley. It is part of the government's Greater Kuala Lumpur/Klang Valley's National Key Economic Area (NKEA), under the Economic Transformation Programme. The Sungai Buloh – Kajang (SBK) Line runs for 51kms, from the north-west town of Sg Buloh to the south-east city town of Kajang. Upon completion, it will comprise 31 stations, and serve 1.2 million people along the route. It will also have strategic integration with KL's existing rail transport network, namely the LRT, Monorail and KTM Komuter, as well as intra and inter-city bus routes. The end result will be better connectivity for KL and its surrounding cities, while reducing the number of cars that enter the capital.

MRT Corp wishes to apologise for any temporary inconvenience caused to the public during the construction of this world-class public transport facility that will benefit Malaysians at large. For more information on traffic diversion, the public can visit the MRT website at www.mymrt.com.my or www.mymrt-underground.com.my, twitter @MRTMalaysia or twitter @MyMRT Underground or call the MRT Hotline at 1-800-82-6868.

For media enquiries, please contact:

Pn. Siti Fadzillah Ismail
MMC-Gamuda KVMRT (PDP) Sdn Bhd

03-74933965 / sitifadzillah@mgjvkvmrt.com.my

Ms. Nadia Azmi
MRT Corp

03-20813185 / nadia.azmi@mymrt.com.my