

MEDIA RELEASE

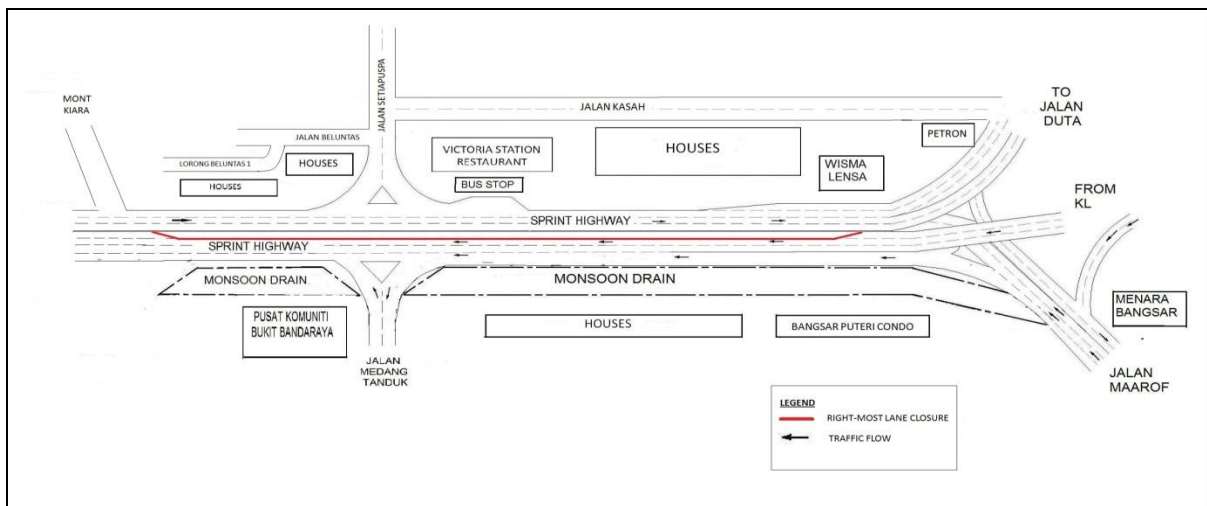
ONE WEEK TRIAL LANE CLOSURE AT SPRINT HIGHWAY (PJ-bound) (After Flyover at Maarof Interchange to Bukit Kiara Interchange)

24 October 2013 to 31 October 2013

Kuala Lumpur, 22 October 2013: Mass Rapid Transit Corporation (MRT Corp) wishes to announce one-week trial lane closure at SPRINT Highway (PJ-bound).

The **right-most lane** at SPRINT Highway (PJ-bound) will undergo a trial closure for a period of one (1) week from **24 October 2013 at 12am to 31 October 2013, for 24 hours**. This 1.1km closure stretch starts after the flyover at Maarof Interchange, ending before Bukit Kiara Interchange. During this trial closure, two lanes will be available for motorists at SPRINT Highway (*please refer to appended map*).

This trial closure is intended to allow MRT Corp and its contractors to study the impact of the closure on the traffic flow at SPRINT Highway. Subsequent to the success of this trial lane closure, a permanent road closure will take place for a period of one (1) year which will be implemented soon after.



As part of MRT Corp's Standard Operating Procedure, safety barriers, traffic cones and traffic flagman will be placed at the work site to ensure road users are pre-warned of on-going works.



In addition, a 24-hour MRT Ronda will be patrolling along the route to attend to any emergencies. MRT Corp apologizes for any temporary inconvenience caused to the public during the construction of this world-class public transport facility that will benefit Malaysians at large.

ENDS

About the MRT Project

MRT is a new rail transport system for the Klang Valley. It is part of the government's Greater Kuala Lumpur/Klang Valley's National Key Economic Area (NKEA), under the Economic Transformation Programme. The Sungai Buloh – Kajang (SBK) Line runs for 51kms, from the north-west town of Sg Buloh to the south-east city town of Kajang. Upon completion, it will comprise 31 stations, and serve 1.2 million people along the route. It will also have strategic integration with KL's existing rail transport network, namely the LRT, Monorail and KTM Komuter, as well as intra and inter-city bus routes. The end result will be better connectivity for KL and its surrounding cities, while reducing the number of cars that enter the capital.

MRT Corp wishes to apologise for any temporary inconvenience caused to the public during the construction of this world-class public transport facility that will benefit Malaysians at large. For more information on traffic diversion, the public can visit the MRT website at www.mymrt.com.my or www.mymrt-underground.com.my, twitter @MRTMalaysia or twitter @MyMRT Underground or call the MRT Hotline at 1-800-82-6868.



For media enquiries, please contact:

Mrs. Ong Jee Lian
MMC-Gamuda KVMRT (PDP) Sdn Bhd

03-74933963 / jeelian@mgjv-kvmrt.com.my

Ms. Nadia Azmi
MRT Corp

03-20813185 / nadia.azmi@mymrt.com.my