

MEDIA RELEASE

TRAFFIC MANAGEMENT PLAN AT SPRINT HIGHWAY NEAR MAAROF INTERCHANGE & SECTION 16 From 23 October 2013 Onwards

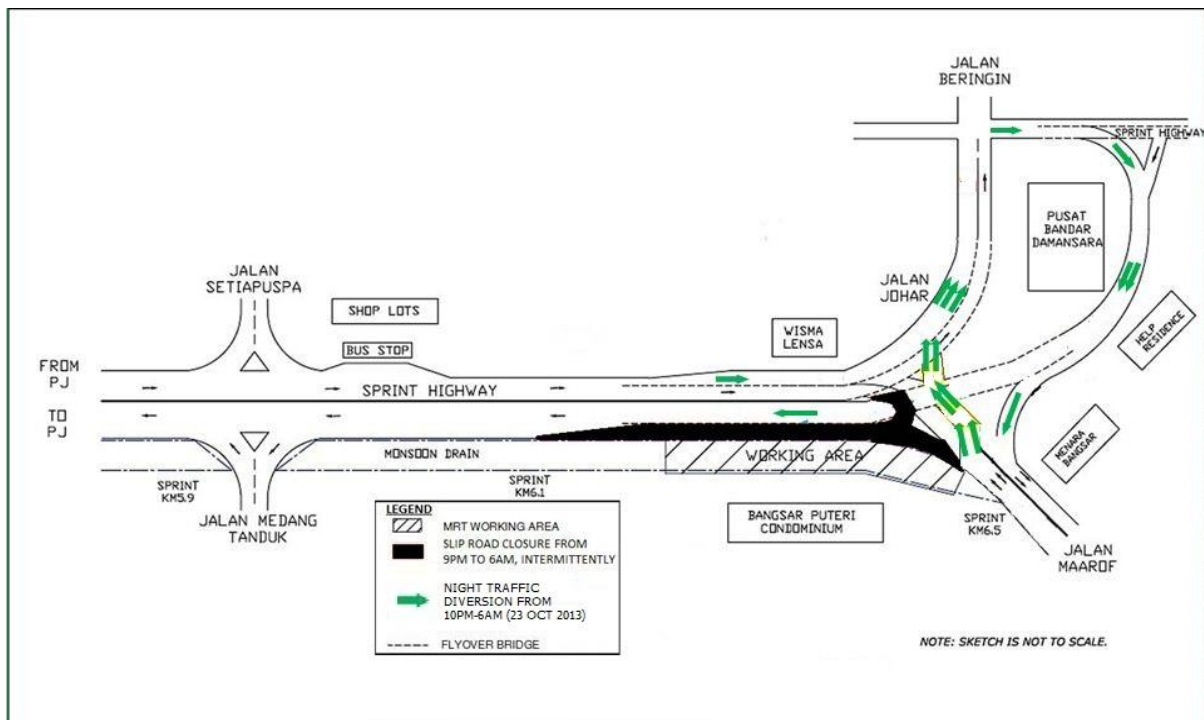
Kuala Lumpur, 22 October 2013: Mass Rapid Transit Corporation (MRT Corp) wishes to announce the following traffic management plan at SPRINT Highway:

At Maarof Interchange

1. One night traffic diversion at Jalan Maarof (downhill towards Jalan Johar) (KL-bound) on 23 October 2013

Jalan Maarof (downhill towards Jalan Johar, at Maarof Interchange) will intermittently undergo a temporary traffic diversion from 10pm to 6am. Motorists from Jalan Maarof heading towards Jalan Johar will be diverted to the opposite side of road, which is currently being utilised by motorists from SPRINT highway (KL-bound) to Jalan Maarof.

Thus, motorists from SPRINT highway (KL-bound) heading towards Jalan Maarof will be diverted to Jalan Johar, going around Pusat Bandar Damansara Complex, passing HELP residence towards Jalan Maarof (*please refer to below map*).

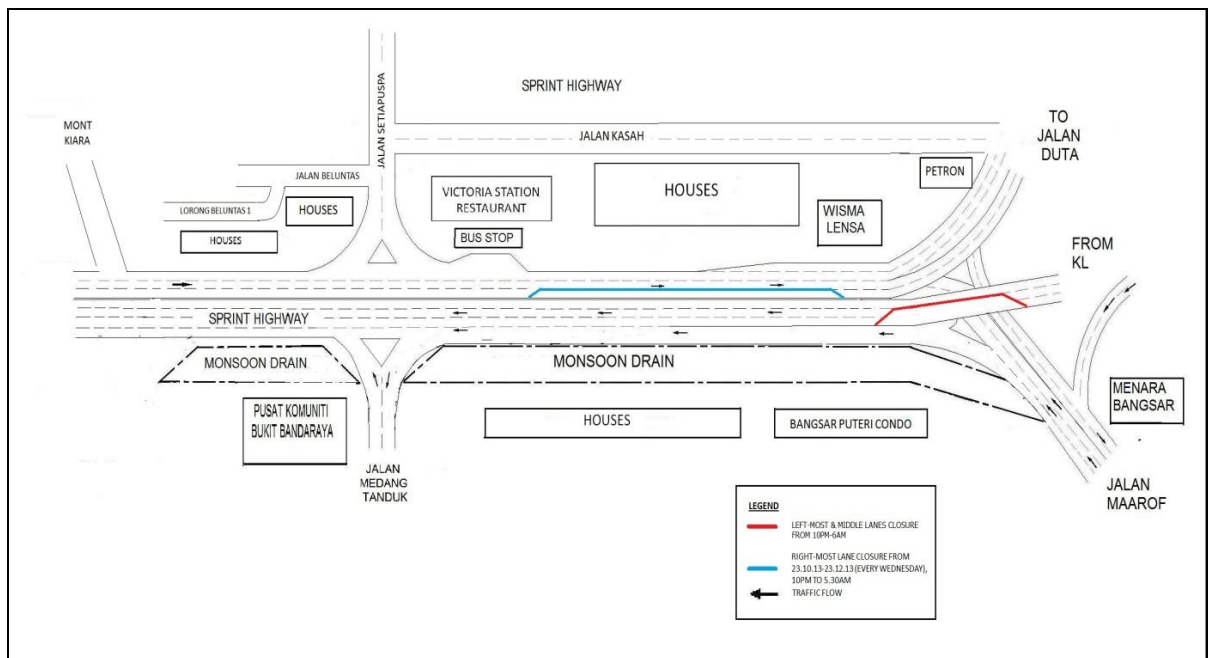


2. Night lane closure on every Wednesday at SPRINT Highway (KL-bound) : 23 October 2013 to 23 December 2013

The **right-most lane** at SPRINT Highway (KL-bound) will be closed every Wednesday for a period of two (2) months from **23 October 2013 to 23 December 2013**, from **10.00pm to 5.30am**. This closure will be carried out in stages for 150 metres, at a stretch between the junction of Jalan Setia Puspa and Wisma Lensa (*please refer to below map*).

3. Continuation of temporary night closure of left-most and middle lanes at Maarof Interchange - SPRINT Highway (PJ-bound) on 24 and 25 October 2013

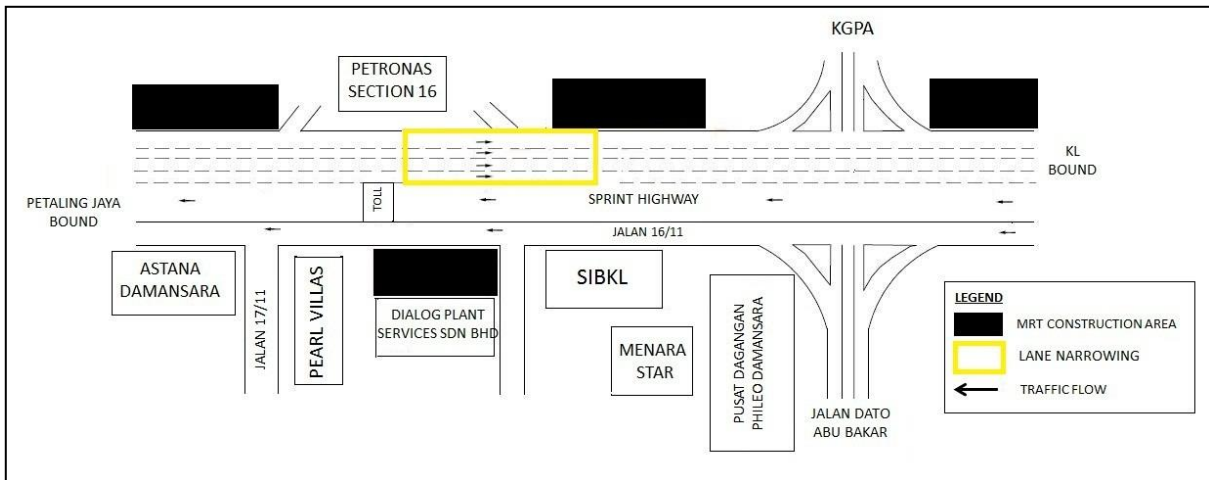
Both of the left-most and middle lanes of SPRINT Highway (PJ-bound) will be closed for two (2) nights starting **24 October 2013 from 10pm to 6am**. One lane (the right-most lane) will be available for motorists heading towards PJ (*please refer to below map*)



At Section 16

Partial night lane closures at SPRINT Highway (KL-bound), near Petronas: 24 & 25 October 2013

Temporary night lane closures at SPRINT Highway near Petronas, Section 16, will be implemented in stages for the purpose of lane narrowing activities. During the night closures on 24 and 25 October 2013 from 12am to 5.30am, one lane will be made available at any one time for motorists to pass through (*please refer to below map*).



The above Traffic Management Plan at SPRINT Highway is necessary to accommodate large construction machineries needed to build the MRT Section 16 and Pusat Bandar Damansara Stations, and piers.

As part of MRT Corp’s Standard Operating Procedure, safety barriers, traffic cones and traffic flagman will be placed at the work site to ensure road users are pre-warned of on-going works. In addition, a 24-hour MRT Ronda will be patrolling along the route to attend to any emergencies. MRT Corp apologizes for any temporary inconvenience caused to the public during the construction of this world-class public transport facility that will benefit Malaysians at large.

ENDS



About the MRT Project

MRT is a new rail transport system for the Klang Valley. It is part of the government's Greater Kuala Lumpur/Klang Valley's National Key Economic Area (NKEA), under the Economic Transformation Programme. The Sungai Buloh – Kajang (SBK) Line runs for 51kms, from the north-west town of Sg Buloh to the south-east city town of Kajang. Upon completion, it will comprise 31 stations, and serve 1.2 million people along the route. It will also have strategic integration with KL's existing rail transport network, namely the LRT, Monorail and KTM Komuter, as well as intra and inter-city bus routes. The end result will be better connectivity for KL and its surrounding cities, while reducing the number of cars that enter the capital.

MRT Corp wishes to apologise for any temporary inconvenience caused to the public during the construction of this world-class public transport facility that will benefit Malaysians at large. For more information on traffic diversion, the public can visit the MRT website at www.mymrt.com.my or www.mymrt-underground.com.my, twitter @MRTMalaysia or twitter @MyMRT Underground or call the MRT Hotline at 1-800-82-6868.

For media enquiries, please contact:

Mrs. Ong Jee Lian
MMC-Gamuda KVMRT (PDP) Sdn Bhd

03-74933963 / jeelian@mgjv-kvmrt.com.my

Ms. Nadia Azmi
MRT Corp

03-20813185 / nadia.azmi@mymrt.com.my