



MEDIA RELEASE

UPDATES ON TRAFFIC MANAGEMENT PLAN AT MAAROF INTERCHANGE

From 18 October 2013 to 21 October 2013

Kuala Lumpur, 18 October 2013: Mass Rapid Transit Corporation Sdn Bhd (MRT Corp) wishes to announce the following updates on the traffic management plan at Maarof Interchange:

1. 24 hour closure of slip road at Maarof Interchange (PJ-bound)

The slip road from Jalan Maarof to Sprint Highway (PJ-bound) will be closed on **18 October 2013 for 24 hours, starting at 9:30pm.**

During this temporary closure, traffic from Jalan Maarof (from Bangsar) heading towards Sprint Highway will be diverted to Jalan Johar, going around Pusat Bandar Damansara Complex and back to Sprint Highway. *(Please refer to appended map.)*

2. One-night traffic diversion at Jalan Maarof (downhill towards Jalan Johar) (KL-bound)

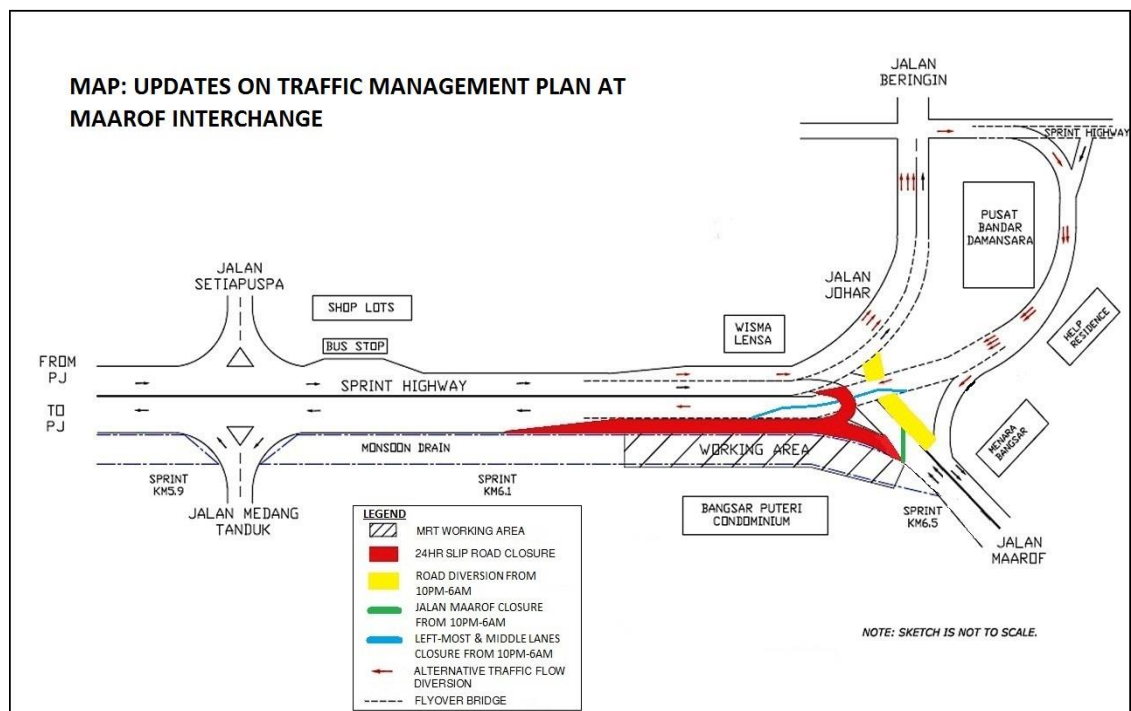
Jalan Maarof (downhill towards Jalan Johar, at Maarof Interchange) will undergo a temporary traffic diversion **beginning 19 October 2013 to 21 October 2013, from 10:00pm to 6:00am.**

Motorists from Jalan Maarof heading towards Jalan Johar will be diverted to the opposite side of the road, which is currently being utilised by motorists from Sprint Highway (KL-bound) to Jalan Maarof. As for the motorists from Sprint Highway (KL bound) heading towards Jalan Maarof, they will be diverted to Jalan Johar, going around Pusat Bandar Damansara Complex, passing HELP residence and down to Jalan Maarof. *(Please refer to appended map.)*

3. Continuation of temporary night closure of left-most and middle lanes of Sprint Highway (Petaling Jaya-bound)

The left-most and middle lanes of Sprint Highway (Petaling Jaya-bound) will be closed beginning 19 October 2013 to 21 October 2013, from 10:00pm to 6:00am. One lane (the right-most lane) will be available for motorists heading towards Petaling Jaya.

All the closures are necessary to accommodate large construction machineries needed to facilitate steel truss work for the construction of the MRT Pusat Bandar Damansara Station.



ENDS



About the MRT Project

MRT is a new rail transport system for the Klang Valley. It is part of the government's Greater Kuala Lumpur/Klang Valley's National Key Economic Area (NKEA), under the Economic Transformation Programme. The Sungai Buloh – Kajang (SBK) Line runs for 51kms, from the north-west town of Sg Buloh to the south-east city town of Kajang. Upon completion, it will comprise 31 stations, and serve 1.2 million people along the route. It will also have strategic integration with KL's existing rail transport network, namely the LRT, Monorail and KTM Komuter, as well as intra and inter-city bus routes. The end result will be better connectivity for KL and its surrounding cities, while reducing the number of cars that enter the capital.

MRT Corp wishes to apologise for any temporary inconvenience caused to the public during the construction of this world-class public transport facility that will benefit Malaysians at large. For more information on traffic diversion, the public can visit the MRT website at www.mymrt.com.my or www.mymrt-underground.com.my, twitter [@MRTMalaysia](https://twitter.com/MRTMalaysia) or twitter [@MyMRT Underground](https://twitter.com/MyMRTUnderground) or call the MRT Hotline at 1-800-82-6868.

For media enquiries, please contact:

Mrs. Ong Jee Lian
MMC-Gamuda KVMRT (PDP) Sdn Bhd

03-74933963 / jeelian@mgjv-kvmrt.com.my

Ms. Nadia Azmi
MRT Corp

03-20813185 / nadia.azmi@mymrt.com.my