

## MEDIA RELEASE

# TRAFFIC MANAGEMENT ANNOUNCEMENT

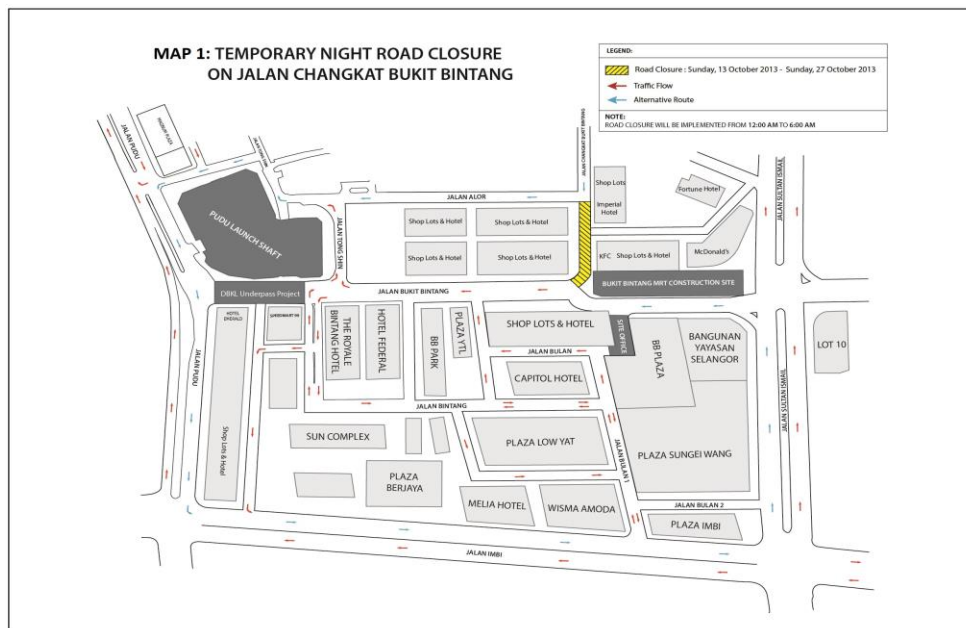
1. Temporary night road closure at Jalan Changkat Bukit Bintang
2. Temporary closures of short stretches along Jalan Damansara (in front of Muzium Negara)
3. Long-term traffic realignment at Jalan Cheras (in front of Brunsville)
4. Temporary partial closure of East West Link Expressway underpass (Kajang-bound)
5. Temporary partial closure of slip road at Jalan Cheras (heading towards MRR2 from Kajang)
6. Temporary closure of motorcycle lane at Cheras-Kajang (Grand Saga) Highway (KL-bound)

Kuala Lumpur, 13 October 2013: Mass Rapid Transit Corporation Sdn Bhd (MRT Corp) wishes to announce the following:

### i. Temporary night road closure at Jalan Changkat Bukit Bintang

There will be a temporary night road closure at Jalan Changkat Bukit Bintang between 13 October 2013 and 27 October 2013, from 12:00 midnight to 6:00am daily.

The temporary night road closure involves an 85-metre stretch, with an alternative road provided. (Please see appended Map 1.)

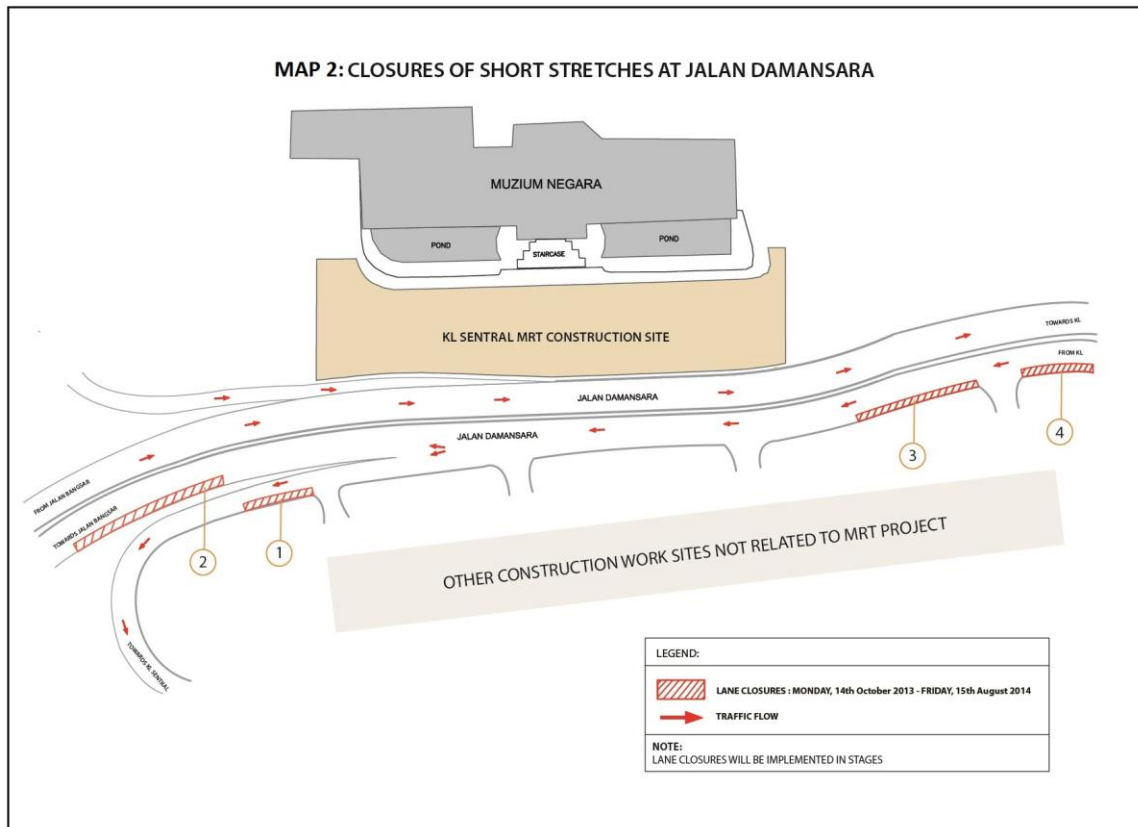


The night closure is necessary to facilitate installation work for sheet pile at the MRT Bukit Bintang Station construction site. Traffic movement is not expected to be affected as the lane closure will be done late at night into the early hours of the next day, except for Fridays and Saturdays.

**ii. Temporary closures of short stretches along Jalan Damansara (in front of Muzium Negara)**

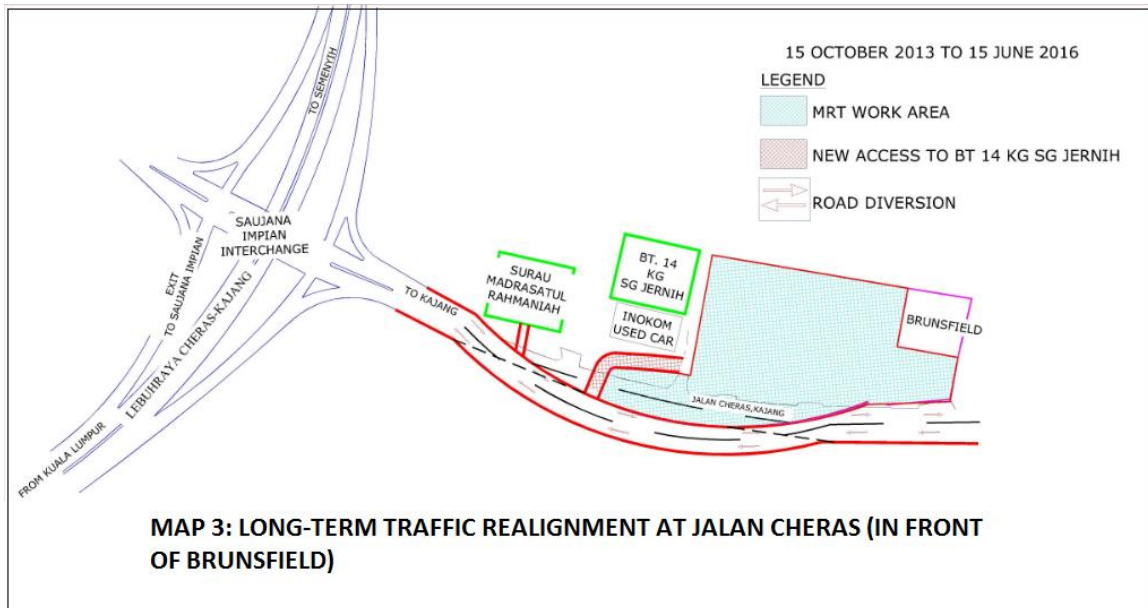
There will be temporary closures of four short stretches along Jalan Damansara (in front of Muzium Negara), in the Bangsar and KL Sentral bound directions between **14 October 2013 and 15 August 2014**.

The stretches, involving a maximum of a 50-metre stretch each, will be carried in stages. Only one stretch will be closed at any one time. The closures are to facilitate piloting and utility relocation works. *(Please see appended Map 2.)*



### iii. Long-term traffic realignment at Jalan Cheras (in front of Brunstfield)

Traffic entering Jalan Cheras from the Saujana Impian Interchange will be realigned to a new constructed lane beginning 15 October 2013 to 15 June 2016. (Please see appended Map 3.)

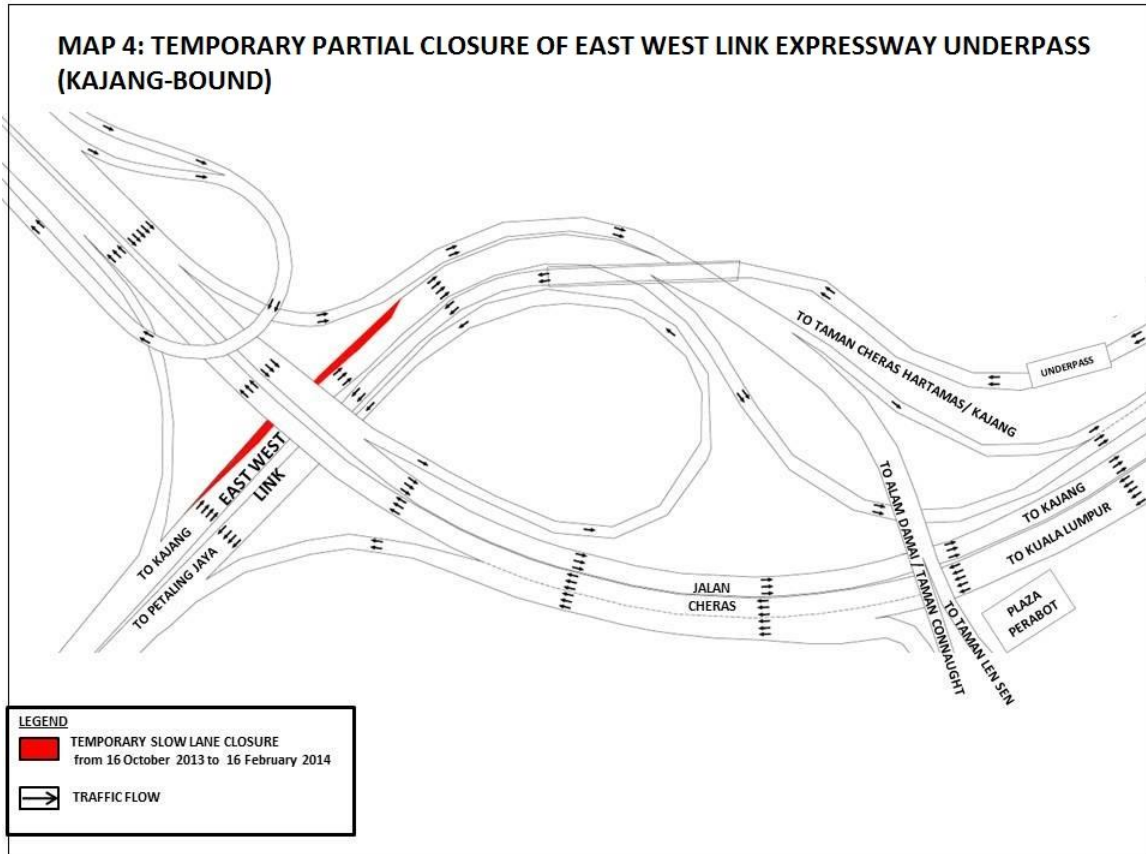


This 60-metre traffic realignment will not reduce the number of lanes. The realignment is necessary to facilitate preparation works for the construction of MRT piers and MRT Bandar Saujana Impian Station.



**iv. Temporary partial closure of East West Link Expressway underpass (Kajang-bound)**

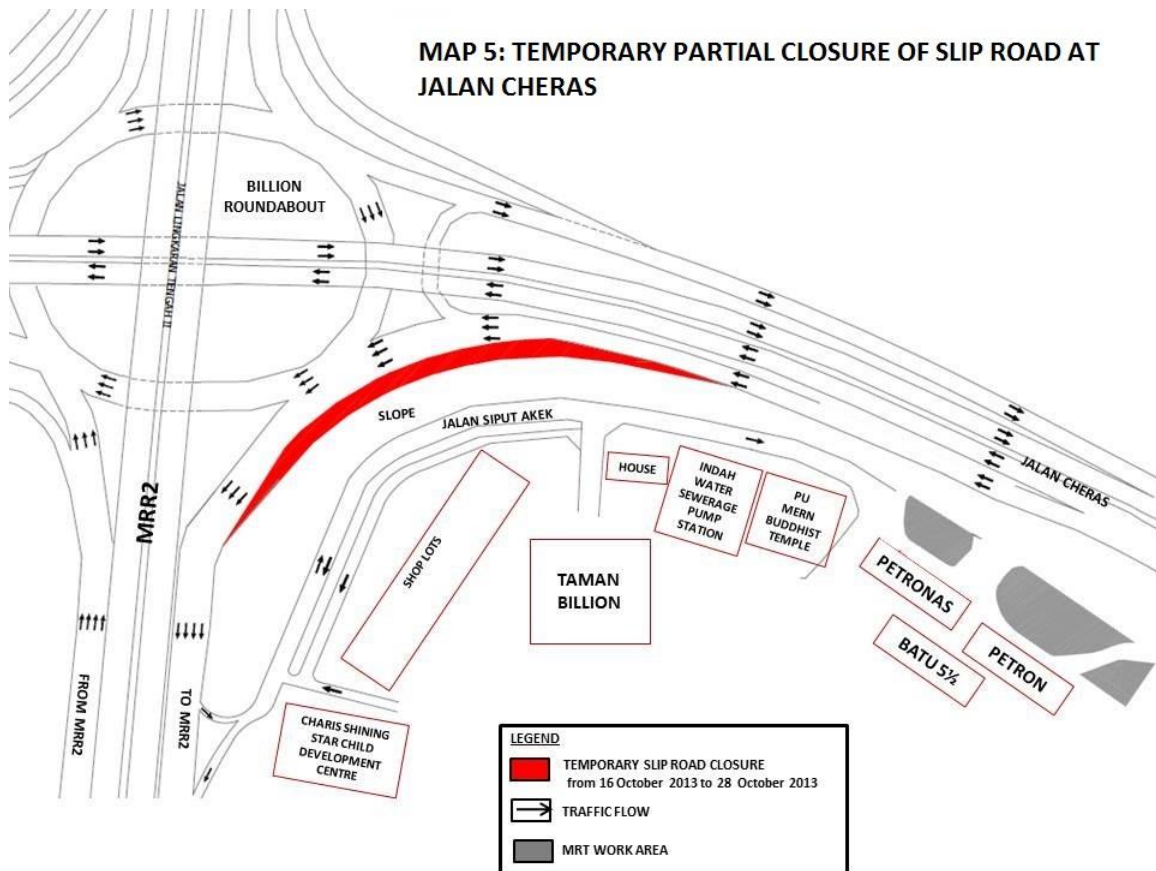
The left-most lane of the East West Link Expressway underpass (Kajang-bound) will be partially closed for a stretch of 200 metres for 4 months, effectively from 16 October 2013 to 16 February 2014. (Please see appended Map 4.)



**v. Temporary partial closure of slip road at Jalan Cheras (heading towards MRR2 from Kajang)**

The slip road on Jalan Cheras heading towards MRR2 from Kajang at Bulatan Billion will be partially closed for a stretch of 100 metres, effectively from 16 October 2013 to 28 October 2013, from 10:00pm to 5:00am daily. (Please see appended Map 5.)

This temporary night closure is necessary to facilitate utility relocation works.

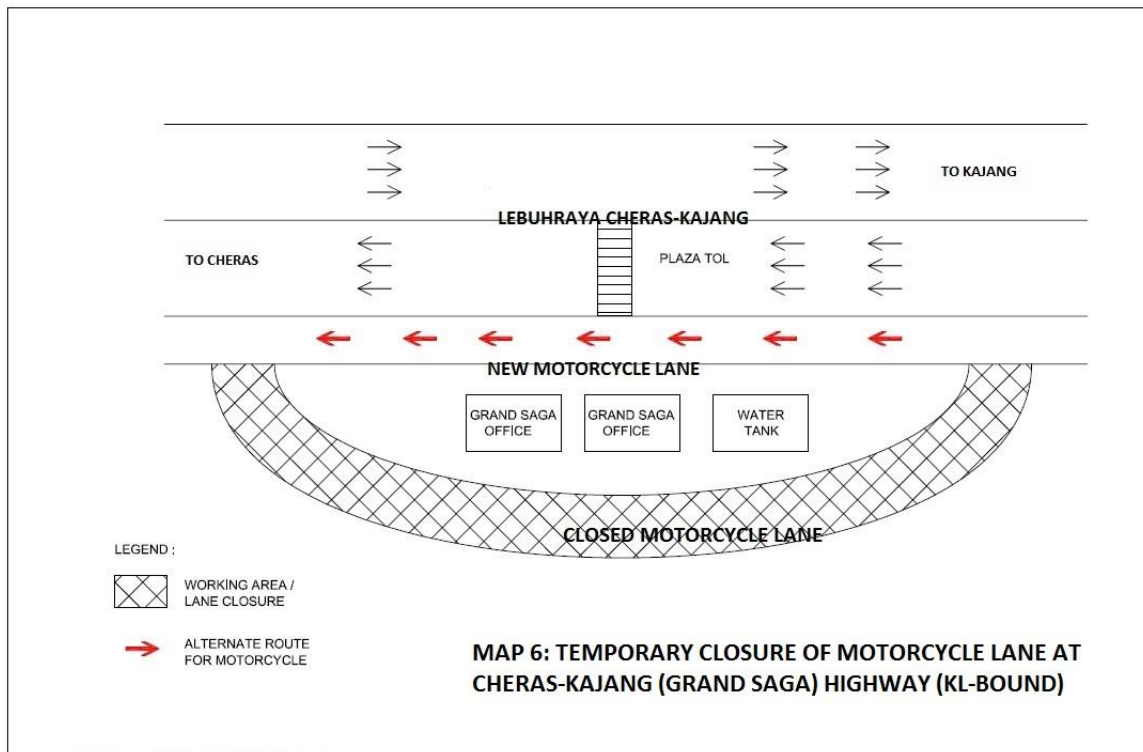


**vi. Temporary closure of motorcycle lane at Cheras-Kajang (Grand Saga) Highway (KL-bound)**

There will be a closure of the motorcycle lane on Cheras-Kajang (Grand Saga) Highway (KL-bound), effective 16 October 2013 to 28 October 2013 from 11:00pm to 5:00am.

The lane closure, affecting a 700-metre stretch is to facilitate utility relocation works for the construction of the MRT alignment near Plaza Toll Batu 11.

As an alternative, motorcyclists heading to Cheras/Kuala Lumpur are advised to use the new motorcycle lane (in front of Grand Saga Office). (Please see appended Map 6.)



**ENDS**



## **About the MRT Project**

*MRT is a new rail transport system for the Klang Valley. It is part of the government's Greater Kuala Lumpur/Klang Valley's National Key Economic Area (NKEA), under the Economic Transformation Programme. The Sungai Buloh – Kajang (SBK) Line runs for 51kms, from the north-west town of Sg Buloh to the south-east city town of Kajang. Upon completion, it will comprise 31 stations, and serve 1.2 million people along the route. It will also have strategic integration with KL's existing rail transport network, namely the LRT, Monorail and KTM Komuter, as well as intra and inter-city bus routes. The end result will be better connectivity for KL and its surrounding cities, while reducing the number of cars that enter the capital.*

*MRT Corp wishes to apologise for any temporary inconvenience caused to the public during the construction of this world-class public transport facility that will benefit Malaysians at large. For more information on traffic diversion, the public can visit the MRT website at [www.mymrt.com.my](http://www.mymrt.com.my) or [www.mymrt-underground.com.my](http://www.mymrt-underground.com.my), twitter [@MRTMalaysia](https://twitter.com/MRTMalaysia) or twitter [@MyMRT Underground](https://twitter.com/MyMRTUnderground) or call the MRT Hotline at 1-800-82-6868.*

***For media enquiries, please contact:***

***Mr. Leong Shen-Li***  
*MRT Corp*

***03-20813182 / [leong.shen-li@mymrt.com.my](mailto:leong.shen-li@mymrt.com.my)***

***Ms. Nadia Azmi***  
*MRT Corp*

***03-20813185 / [nadia.azmi@mymrt.com.my](mailto:nadia.azmi@mymrt.com.my)***