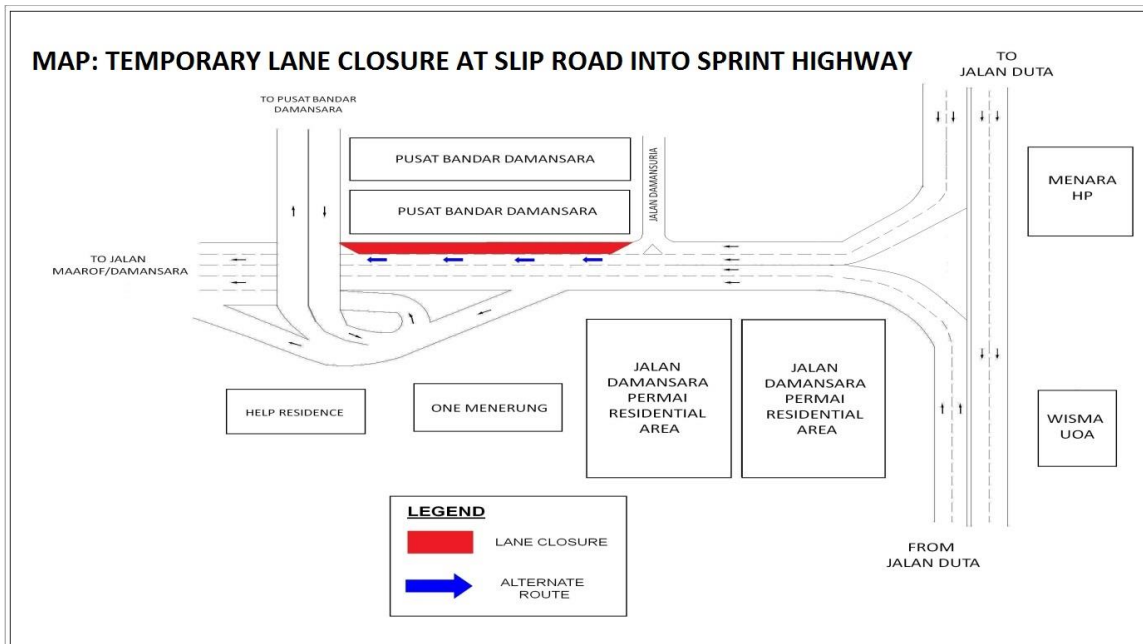


MEDIA RELEASE

TEMPORARY LANE CLOSURE AT SLIP ROAD INTO SPRINT HIGHWAY (Near Pusat Bandar Damansara)

Kuala Lumpur, 24 September 2013: Mass Rapid Transit Corporation Sdn Bhd (MRT Corp) wishes to announce that the right-most lane of the slip road into Sprint Highway (near Pusat Bandar Damansara) will be closed intermittently only for a few days in a week during the period from 25 September 2013 to 25 September 2014. Shall there be closures; it will be for 24 hours.

The 200-metre closure stretch starts at the slip road into Sprint Highway after the junction of Jalan Damansuria. The activities involve are site clearing, piloting, utilities relocation, box culvert, bore piling and concreting work in preparation for the construction of MRT piers. *(Please see appended Map.)*





This closure is a key part of our safety practice at all MRT construction sites. It will ensure that any risk of public injury is minimised. Motorists are reminded to drive carefully near MRT worksites and to follow directional signs. Safety barriers, hoardings and traffic cones will be installed at the work sites to ensure road users and pedestrians are well-informed of on-going works. In addition, a 24-hour MRT Ronda will be patrolling along the routes to attend to any emergencies.

MRT Corp wishes to apologise for any temporary inconvenience caused to the public during the construction of this world-class public transport facility that will benefit Malaysians at large.

The Sungai-Buloh Kajang Line will comprise 31 stations, and serve 1.2 million people along the route. It will also have strategic integration with KL's existing rail transport network, namely the LRT, Monorail and KTM Komuter, as well as intra and inter-city bus routes. The end result will be better connectivity for KL and its surrounding cities, while reducing the number of cars that enter the capital.

For more information on traffic diversion, the public can visit the MRT website at www.mymrt.com.my or www.mymrt-underground.com.my, twitter @MRTMalaysia or twitter @MyMRT Underground or call the MRT Hotline at 1-800-82-6868.

ENDS

For media enquiries, please contact:

Mrs. Ong Jee Lian
MMC-Gamuda KVMRT (PDP) Sdn Bhd

03-74933963 / jeelian@mgjv-kvmrt.com.my

Ms. Nadia Azmi
MRT Corp

03-20813185 / nadia.azmi@mymrt.com.my