



## MEDIA RELEASE

# TRAFFIC MANAGEMENT PLAN AT MAAROF INTERCHANGE

**Kuala Lumpur, 22 September 2013:** Mass Rapid Transit Corporation Sdn Bhd (MRT Corp) wishes to announce the implementation of a traffic management plan at the Maarof Interchange of Sprint Highway.

There will be temporary lane closures at this location **intermittently on several nights during the period of 23 September 2013 to 19 October 2013, from 10:00pm to 6:00am. During such temporary closures, the affected lanes will only be closed for not more than four hours during the night.**

Amir Mahmood Razak, the Director of Strategic Communications & Public Relations at MRT Corp explains that the closures are implemented in the interest of public safety.

"In order to accommodate the large construction machineries needed to facilitate steel truss work for the construction the new MRT Pusat Bandar Damansara Station, we will have to implement the closures. As we have explained before, these lane closures are done at night to minimise traffic impact during the day, and in the best interest of public safety," said Amir.

Amir also assured road users that proper signages will be in place near HELP Residency to direct them to the bridge towards Pusat Bandar Damansara, and then to Bangsar via the lower loop in front of HELP Residency.

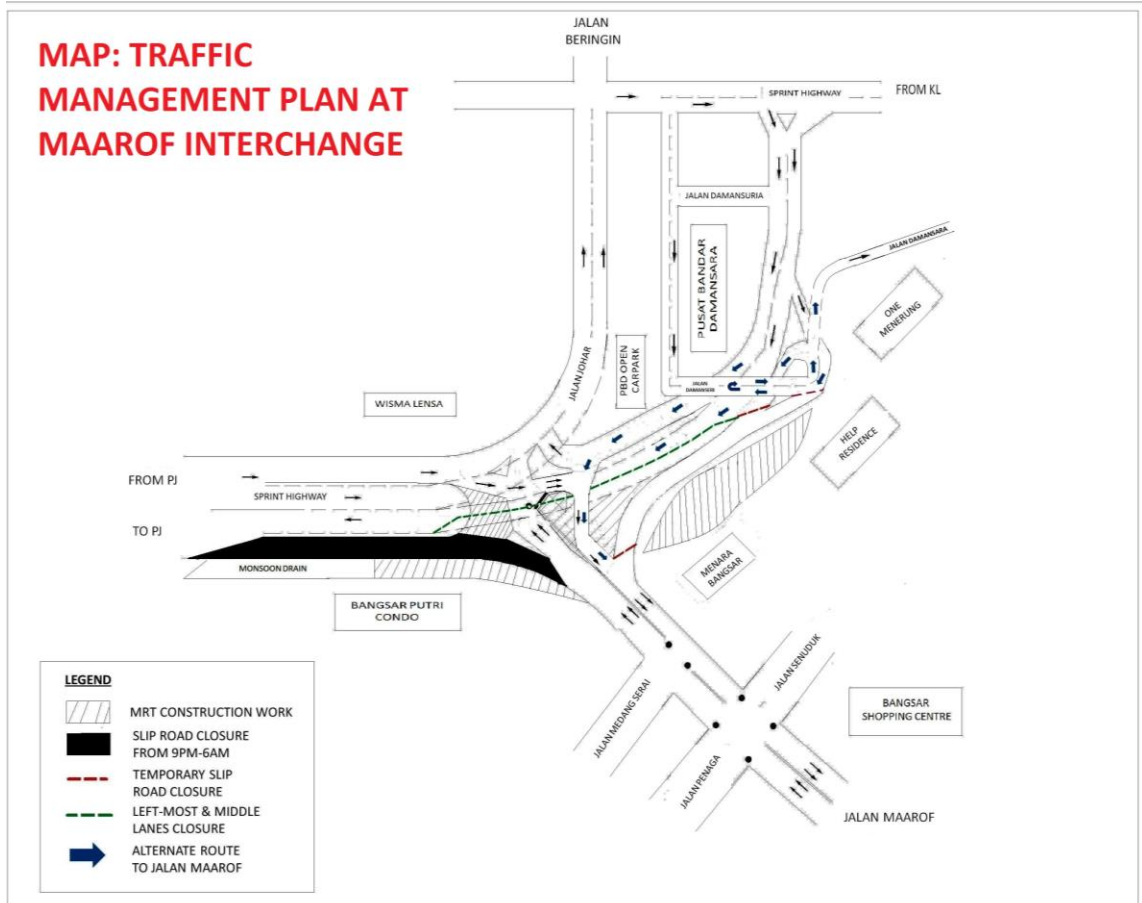
The traffic management plan for Maarof Interchange will be done concurrently, affecting the following routes:

**i. Temporary night closure of slip road from Kuala Lumpur to Jalan Maarof (uphill towards Bangsar Shopping Centre)**

During the temporary closure of the slip road from Kuala Lumpur to Jalan Maarof, motorists heading to Jalan Maarof will be diverted to towards Pusat Bandar Damansara, making a U-turn further ahead before joining the lower loop toward Jalan Maarof. *(Please see appended map.)*

**ii. Temporary night closure of left-most and middle lanes of Sprint Highway (Petaling Jaya-bound)**

Both the left-most and middle lanes of Sprint Highway (Petaling Jaya-bound) will be closed at night to accommodate the construction work at Maarof Interchange. One lane (the right-most lane) will be available for motorists heading towards Petaling Jaya.



This traffic management plan is a key part of our safety practice at all MRT construction sites. It will ensure that any risk of public injury is minimised. Motorists are reminded to drive carefully near MRT worksites and to follow directional signs. Safety barriers, hoardings and traffic cones will be installed at the work sites to ensure road users and pedestrians are well-informed of on-going works. In addition, a 24-hour MRT Ronda will be patrolling along the routes to attend to any emergencies.

MRT Corp wishes to apologise for any temporary inconvenience caused to the public during the construction of this world-class public transport facility that will benefit Malaysians at large.



The Sungai-Buloh Kajang Line will comprise 31 stations, and serve 1.2 million people along the route. It will also have strategic integration with KL's existing rail transport network, namely the LRT, Monorail and KTM Komuter, as well as intra and inter-city bus routes. The end result will be better connectivity for KL and its surrounding cities, while reducing the number of cars that enter the capital.

For more information on traffic diversion, the public can visit the MRT website at [www.mymrt.com.my](http://www.mymrt.com.my) or [www.mymrt-underground.com.my](http://www.mymrt-underground.com.my), twitter @MRTMalaysia or twitter @MyMRT Underground or call the MRT Hotline at 1-800-82-6868.

*ENDS*

*For media enquiries, please contact:*

**Mrs. Ong Jee Lian**  
MMC-Gamuda KVMRT (PDP) Sdn Bhd

03-74933963 / [jeelian@mgjv-kvmrt.com.my](mailto:jeelian@mgjv-kvmrt.com.my)

**Ms. Nadia Azmi**  
MRT Corp

03-20813185 / [nadia.azmi@mymrt.com.my](mailto:nadia.azmi@mymrt.com.my)