

## MEDIA RELEASE

# TRAFFIC MANAGEMENT ANNOUNCEMENT

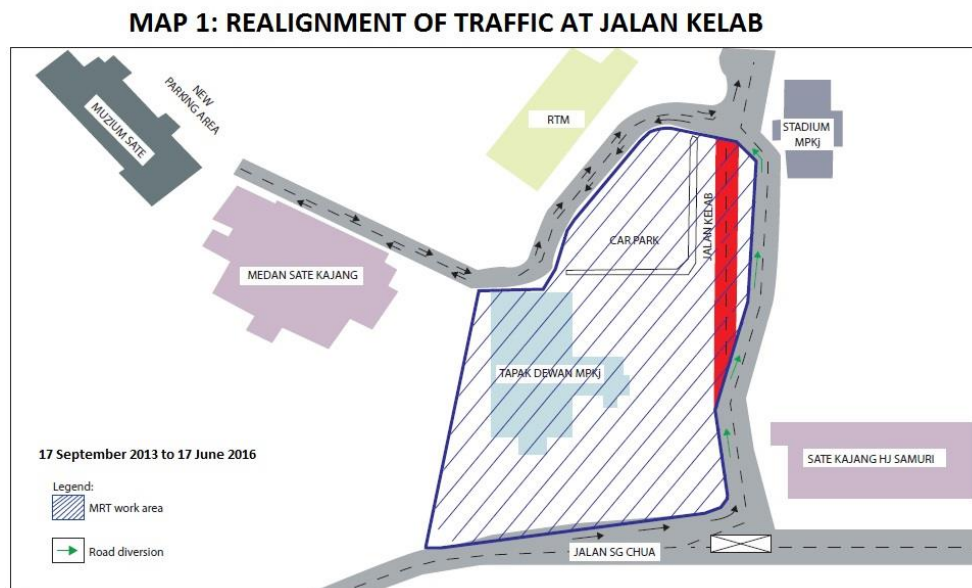
Kuala Lumpur, 13 September 2013: Mass Rapid Transit Corporation Sdn Bhd (MRT Corp) wishes to announce following traffic management plan:

### i. Realignment of traffic at Jalan Kelab (in front of Kajang Stadium)

Traffic at Jalan Kelab will be realigned for a stretch of 200 metres effective **17 September 2013 to 17 June 2016**. (Please see appended Map 1.)

Traffic entering Jalan Kelab will be diverted to a new constructed lane. As such, there is no reduction to the number of lanes. Some of the parking bays in front of the stadium had been taken up and a new parking area has been constructed in front of Muzium Sate (opposite Kajang Stadium).

The realignment is necessary to facilitate preparation works for the construction of MRT piers and the Bandar Kajang MRT Station.





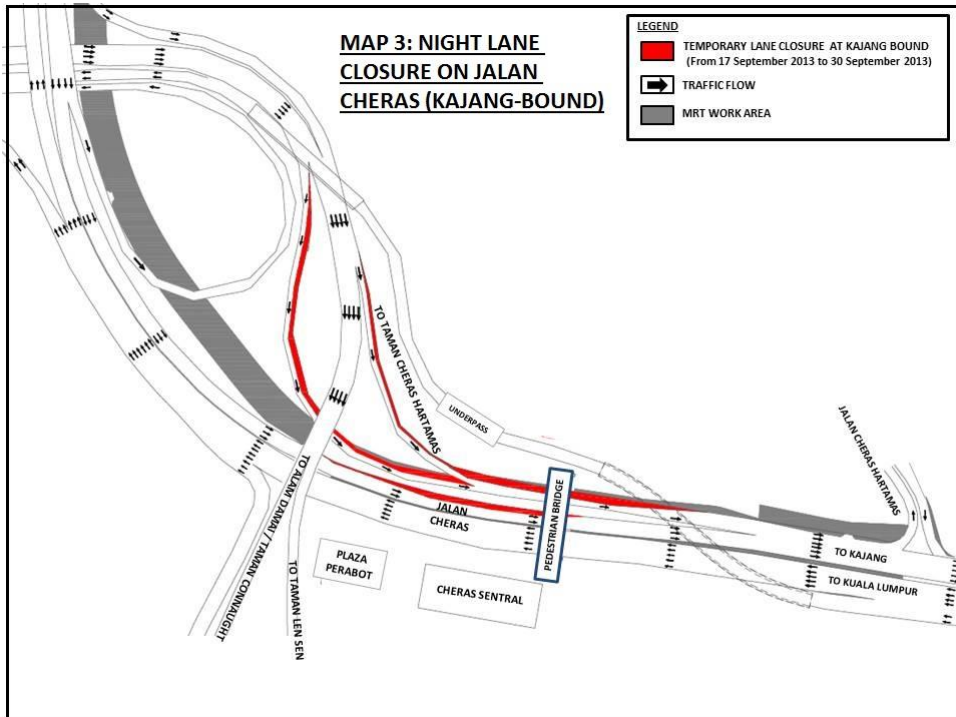
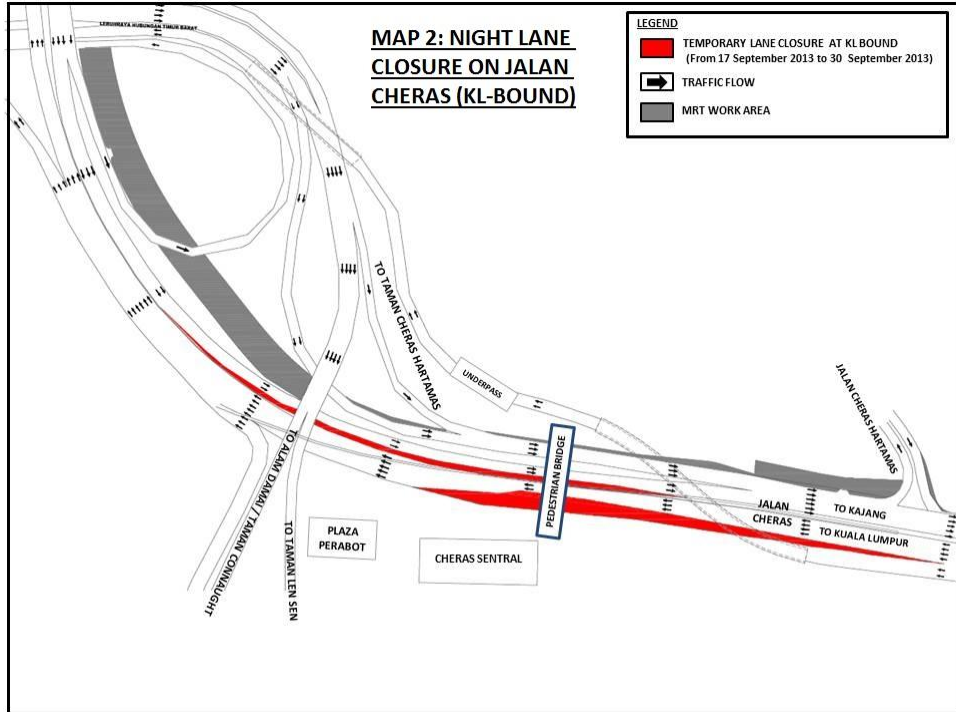
**ii. Extension of night lane closures on Jalan Cheras (near Cheras Sentral/Plaza Phoenix)**

The temporary partial night lane closures on Jalan Cheras (both directions) which was previously implemented on 4 September 2013 to 16 September 2013, is now extended for another 14 days from **17 September 2013 to 30 September 2013 from 10:00pm to 5:00am daily.** (Please see appended Map 2 and Map 3.)

This extension of closure is necessary to facilitate the demolition of the pedestrian bridge located in front of Cheras Sentral in preparation for the construction of MRT piers and Plaza Phoenix MRT Station. The traffic would be stopped for 10 minutes at both directions during the lifting of the bridge to ensure the safety of the road users.

*Details of the partial lane closures are as follows:*

No	Road and direction	Location	Date	Time
1.	Jalan Cheras, Kajang-bound	Partial lane closure of slip road from Taman Connaught headed to Cheras Hartamas and Kajang (150m)	17 September 2013	10.00pm to 5.00am
			22 September 2013 to 24 September 2013	10.00pm to 5.00am
			30 September 2013	10.00pm to 5.00am
2.	Jalan Cheras, Kajang-bound	Partial lane closure of slip road from East-West Link towards Kajang (150m)	17 September 2013	10.00pm to 5.00am
			22 September 2013 to 24 September 2013	10.00pm to 5.00am
			30 September 2013	10.00pm to 5.00am
3.	Jalan Cheras, Kuala Lumpur-bound	Closure of two left-most lanes in front of Cheras Sentral (Plaza Phoenix)	18 September 2013 to 21 September 2013	10.00pm to 5.00am
			25 September 2013 to 29 September 2013	10.00pm to 5.00am

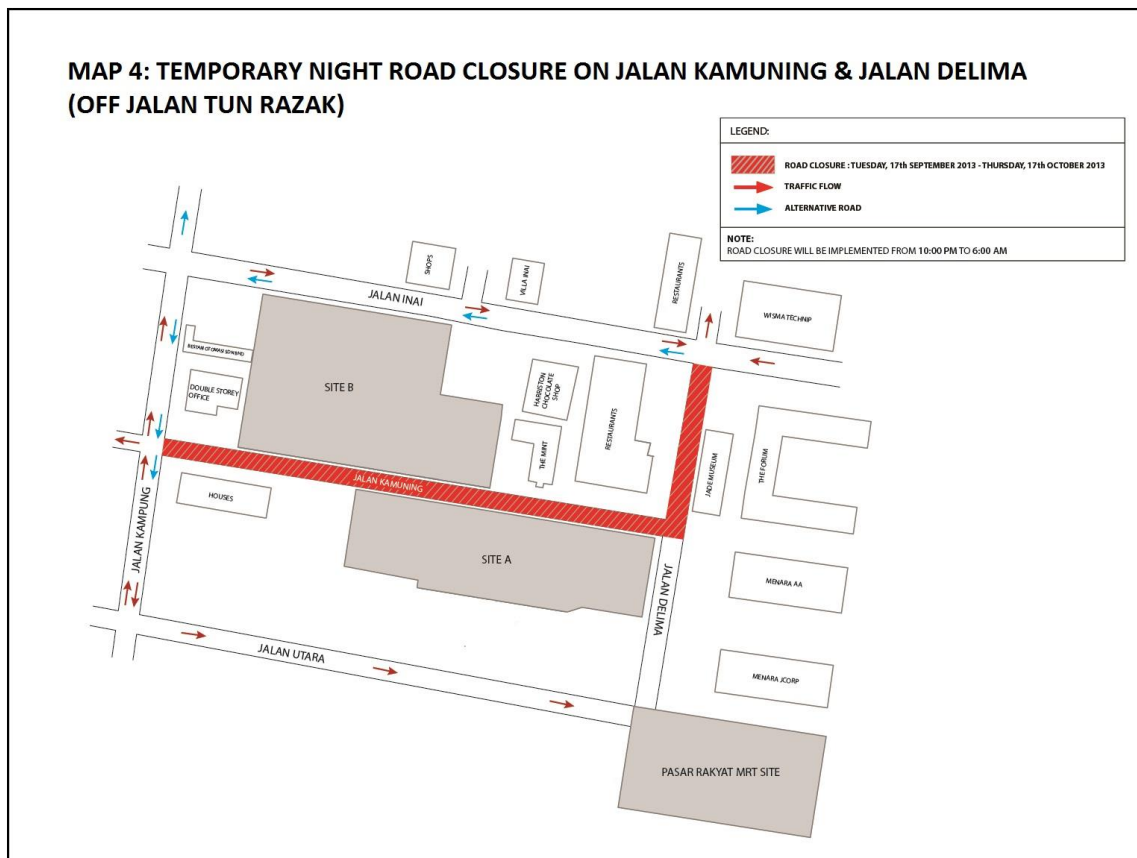


**iii. Temporary night road closure on Jalan Kamuning and Jalan Delima  
(off Jalan Tun Razak)**

There will be a temporary night road closure on Jalan Kamuning and Jalan Delima, off Jalan Tun Razak between 17 September 2013 and 17 October 2013, from 10:00pm to 6:00am daily.

This closure is to facilitate delivery and offloading of the Tunnel Boring Machine components to the MRT construction site at Jalan Kamuning. The night closures, involving a total of approximately 340-metre stretch, will be implemented in stages.

During the closure, an alternative road is available as shown in the appended Map 4.





The closures are a key part of our safety practice at all MRT construction sites. It will ensure that any risk of public injury is minimised. Motorists are reminded to drive carefully near MRT worksites and to follow directional signs.

Safety barriers, hoardings and traffic cones will be installed at the work sites to ensure road users and pedestrians are well-informed of on-going works. In addition, a 24-hour MRT Ronda will be patrolling along the routes to attend to any emergencies.

MRT Corp wishes to apologise for any temporary inconvenience caused to the public during the construction of this world-class public transport facility that will benefit Malaysians at large.

The Sungai-Buloh Kajang Line will comprise 31 stations, and serve 1.2 million people along the route. It will also have strategic integration with KL's existing rail transport network, namely the LRT, Monorail and KTM Komuter, as well as intra and inter-city bus routes. The end result will be better connectivity for KL and its surrounding cities, while reducing the number of cars that enter the capital.

For more information on traffic diversion, the public can visit the MRT website at [www.mymrt.com.my](http://www.mymrt.com.my) or [www.mymrt-underground.com.my](http://www.mymrt-underground.com.my), twitter @MRTMalaysia or twitter @MyMRT Underground or call the MRT Hotline at 1-800-82-6868.

*For media enquiries, please contact:*

**Mr. Leong Shen-Li**  
MRT Corp

03-20813182 / [leong.shen-li@mymrt.com.my](mailto:leong.shen-li@mymrt.com.my)

**Ms. Nadia Azmi**  
MRT Corp

03-20813185 / [nadia.azmi@mymrt.com.my](mailto:nadia.azmi@mymrt.com.my)