

**MEDIA RELEASE**

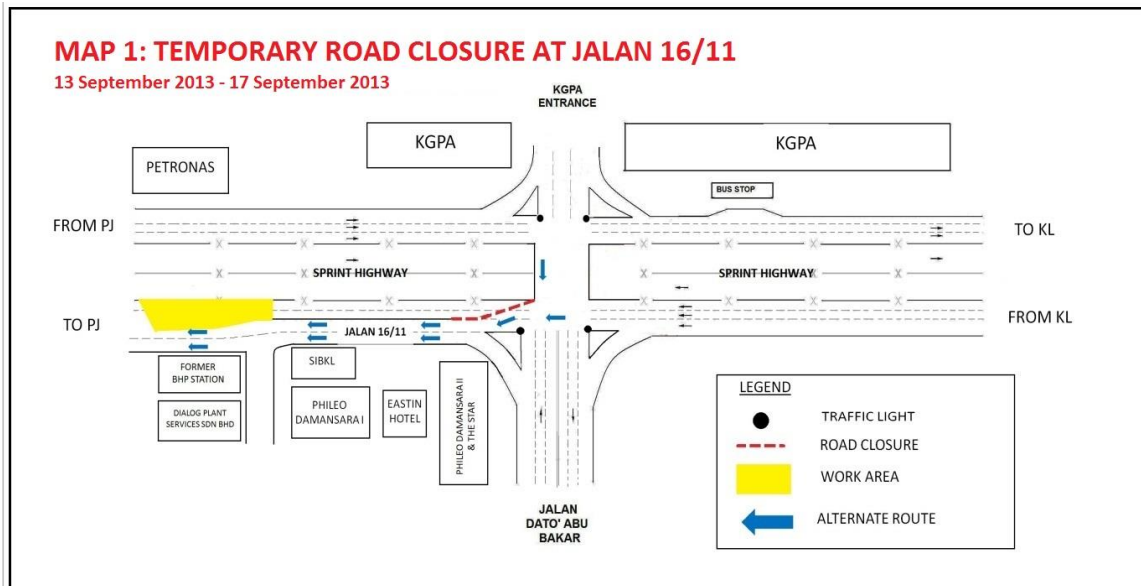
**TEMPORARY CLOSURES AT JALAN 16/11  
AND JALAN CHERAS**

**Kuala Lumpur, 10 September 2013:** Mass Rapid Transit Corporation Sdn Bhd (MRT Corp) wishes to announce the following closures:

**i. Temporary road closure at Jalan 16/11 (next to Sprint Highway)**

that a temporary road closure at Jalan 16/11 (next to SPRINT highway) (Petaling Jaya-bound) between Jalan Dato’ Abu Bakar traffic light junction and Pusat Dagangan Phileo Damansara will be commencing from **13 September 2013 at 10:00pm** to **17 September 2013 at 6:00am**.

The 200-metre closure is necessary to facilitate the utilities relocation works in front of the former BHP petrol station. During the road closure, motorists heading towards PJ on Jalan 16/11 will be diverted to the left-most lane, up the ramp alongside Eastin Hotel before connecting back to the main road. *(Please see appended Map 1.)*



**ii. Temporary closure of U-turn and lane realignment at Jalan Cheras**

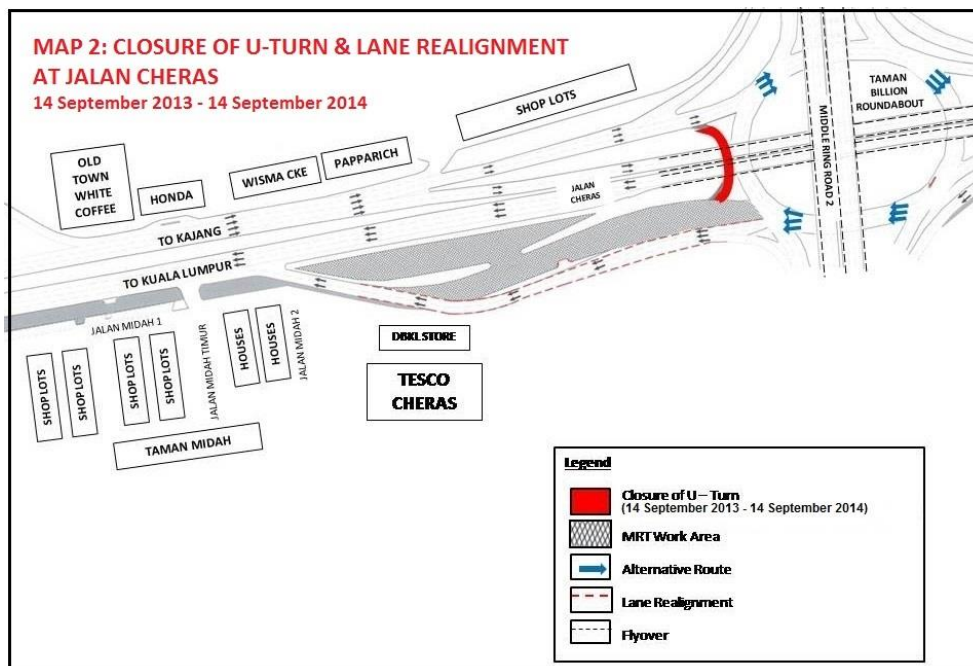
- (a) There will be a **TWELVE-MONTH** closure of the U-turn at Jalan Cheras (Kajang-bound) near Tesco Extra Cheras, Taman Midah effective from **14 September 2013 to 14 September 2014**.

Motorists on Jalan Cheras (from KL) wanting to make a U-turn under the flyover at Jalan Cheras in front of Tesco Extra Cheras, Taman Midah will be diverted to the Taman Billion roundabout, going back to Jalan Cheras (KL-bound).

- (b) Lane realignment will also be implemented at Jalan Cheras (KL-bound) after the Taman Billion roundabout, heading towards Taman Midah from **14 September 2013 to 14 September 2014**.

Traffic from the Taman Billion roundabout (Kajang-bound) heading towards Taman Midah will be realigned to a new constructed lane. The number of lanes remains unaffected.

The implementation of this U-turn closure and realignment are necessary to facilitate preparation works for MRT piers at Jalan Cheras. The closure involves a comprehensive traffic management plan that has been deliberated thoroughly with all authorities to ensure uninterrupted traffic flow. (Please see appended Map 2.)





The closures are a key part of our safety practice at all MRT construction sites. It will ensure that any risk of public injury is minimised. Motorists are reminded to drive carefully near MRT worksites and to follow directional signs. Safety barriers, hoardings and traffic cones will be installed at the work sites to ensure road users and pedestrians are well-informed of on-going works. In addition, a 24-hour MRT Ronda will be patrolling along the routes to attend to any emergencies.

MRT Corp wishes to apologise for any temporary inconvenience caused to the public during the construction of this world-class public transport facility that will benefit Malaysians at large.

The Sungai-Buloh Kajang Line will comprise 31 stations, and serve 1.2 million people along the route. It will also have strategic integration with KL's existing rail transport network, namely the LRT, Monorail and KTM Komuter, as well as intra and inter-city bus routes. The end result will be better connectivity for KL and its surrounding cities, while reducing the number of cars that enter the capital.

For more information on traffic diversion, the public can visit the MRT website at [www.mymrt.com.my](http://www.mymrt.com.my) or [www.mymrt-underground.com.my](http://www.mymrt-underground.com.my), twitter @MRTMalaysia or twitter @MyMRT Underground or call the MRT Hotline at 1-800-82-6868.

***ENDS***

***For media enquiries, please contact:***

***Mr. Leong Shen-Li***  
*MRT Corp*

***03-20813182 / [leong.shen-li@mymrt.com.my](mailto:leong.shen-li@mymrt.com.my)***

***Ms. Nadia Azmi***  
*MRT Corp*

***03-20813185 / [nadia.azmi@mymrt.com.my](mailto:nadia.azmi@mymrt.com.my)***