

MEDIA RELEASE

TRAFFIC MANAGEMENT ANNOUNCEMENT

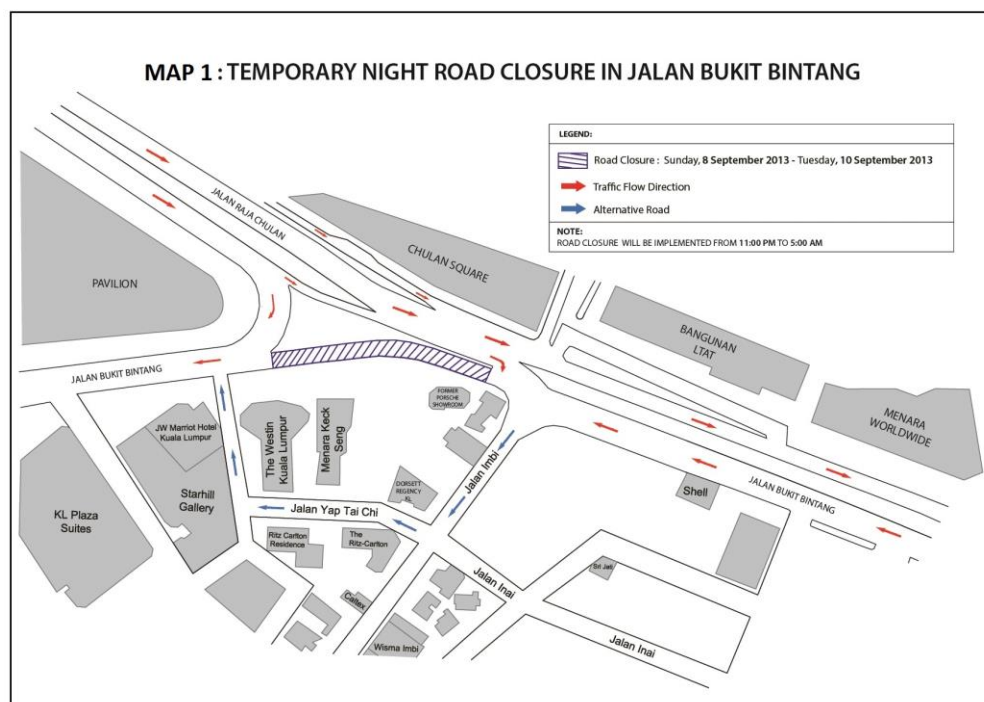
Kuala Lumpur, 6 September 2013: Mass Rapid Transit Corporation Sdn Bhd (MRT Corp) wishes to announce the following traffic management plan:

i. Temporary Night Road Closure at Jalan Bukit Bintang (in front of the former Porsche showroom)

There will be a temporary night road closure at Jalan Bukit Bintang, in front of the former Porsche showroom, beginning 8 September 2013 to 10 September 2013, from 11:00pm to 5:00am.

The 3-night road closure, involving a 100-metre stretch of the road heading towards Pavilion Kuala Lumpur, is to facilitate mobilisation of machinery at the affected location.

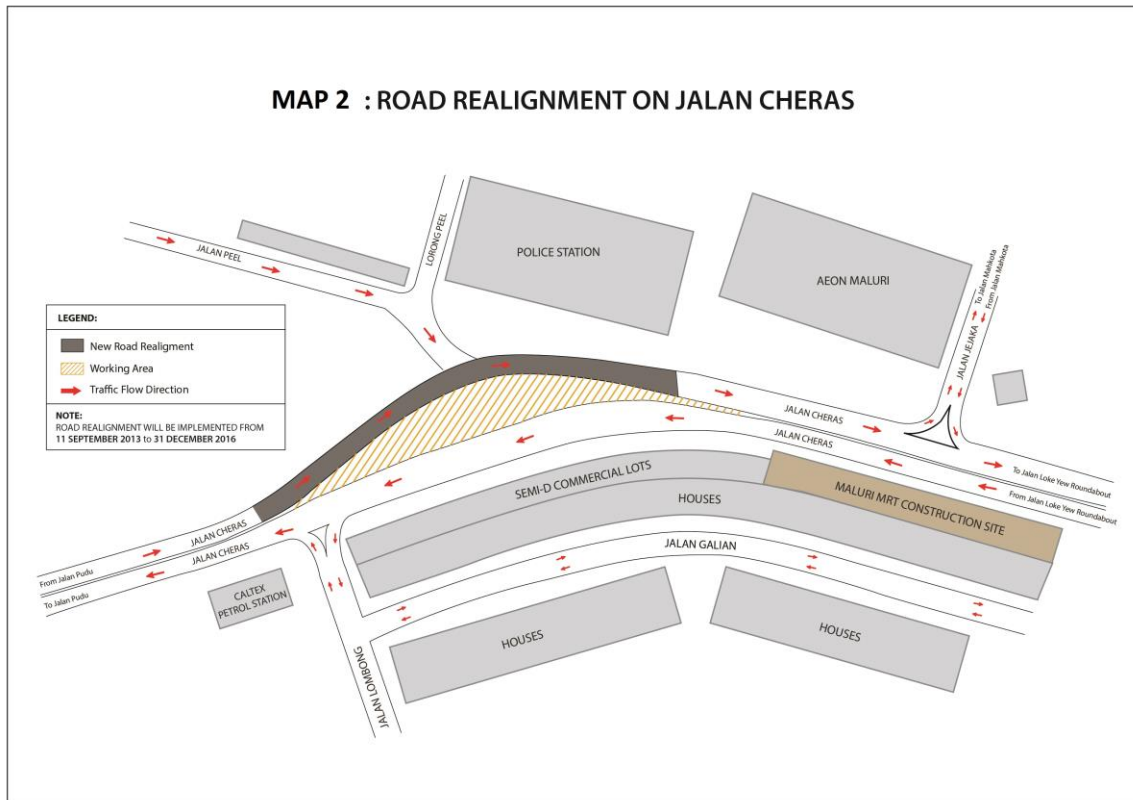
During the closure, an alternative road heading towards Pavilion Kuala Lumpur will be available via Jalan Imbi towards Jalan Yap Tai Chi. (Please see appended Map 1.)



ii. Road Realignment at Jalan Cheras (Heading towards Menara PGRM)

A road realignment will be implemented along a stretch of Jalan Cheras, heading towards Menara PGRM for about **three (3) years** beginning **11 September 2013** to **31 December 2016**.

The 300-metre stretch involves three lanes which will be realigned to facilitate construction work for the Maluri MRT Station. *(Please see appended Map 2.)*



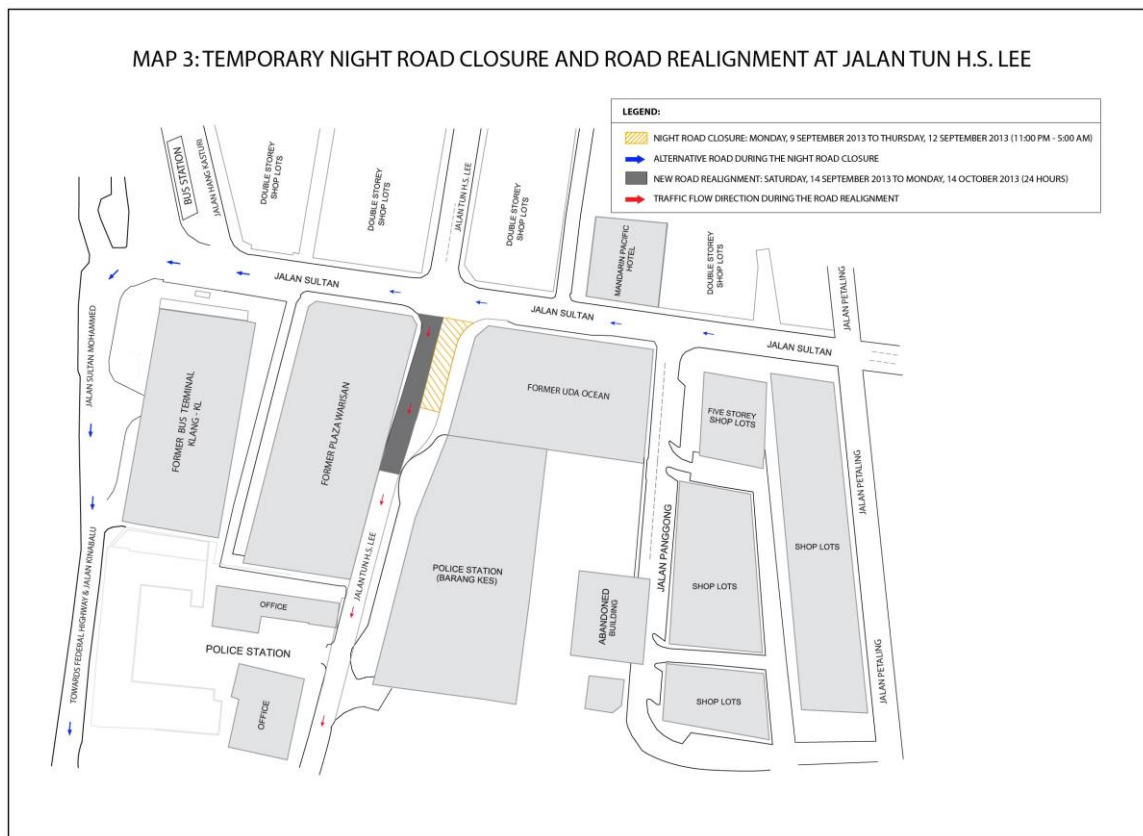
iii. Temporary Night Road Closure and Road Realignment on Jalan Tun H.S.Lee (In front of the former Plaza Warisan)

A stretch of Jalan Tun H.S.Lee, located in front of the former Plaza Warisan will be temporarily closed between 9 September 2013 and 12 September 2013, from 11:00pm to 5:00am daily.

The night closure is necessary to facilitate piloting work construction for the Pasar Seni MRT Station. Motorists may use the alternative route as seen in appended Map 3.

Following the completion of the night closure, a road realignment will be implemented from 14 September 2013 to 14 October 2013 along the same stretch on Jalan Tun H.S. Lee, to facilitate the construction of the diaphragm wall for the Pasar Seni MRT Station.

The 50-metre stretch, involving two lanes, will be realigned to the right side of the road. (Please also see appended Map 3.)





This traffic management plan is a key part of our safety practice at all MRT construction sites. It will ensure that any risk of public injury is minimised. Motorists are reminded to drive carefully near MRT worksites and to follow directional signs. Safety barriers, hoardings and traffic cones will be installed at the work sites to ensure road users and pedestrians are well-informed of on-going works. In addition, a 24-hour MRT Ronda will be patrolling along the routes to attend to any emergencies.

MRT Corp wishes to apologise for any temporary inconvenience caused to the public during the construction of this world-class public transport facility that will benefit Malaysians at large.

The Sungai-Buloh Kajang Line will comprise 31 stations, and serve 1.2 million people along the route. It will also have strategic integration with KL's existing rail transport network, namely the LRT, Monorail and KTM Komuter, as well as intra and inter-city bus routes. The end result will be better connectivity for KL and its surrounding cities, while reducing the number of cars that enter the capital.

For more information on traffic diversion, the public can visit the MRT website at www.mymrt.com.my or www.mymrt-underground.com.my, twitter @MRTMalaysia or twitter @MyMRT Underground or call the MRT Hotline at 1-800-82-6868.

For media enquiries, please contact:

Ms. Jalina Joheng
MMC-Gamuda KVMRT (T) Sdn Bhd

03-23858625 / jalina@kvmrt-ug.com.my

Ms. Nadia Azmi
MRT Corp

03-20813185 / nadia.azmi@mymrt.com.my