



## MEDIA RELEASE

# TRAFFIC MANAGEMENT PLAN ALONG PERSIARAN SURIAN (Kelab Golf Sri Selangor to Ikano stretch)

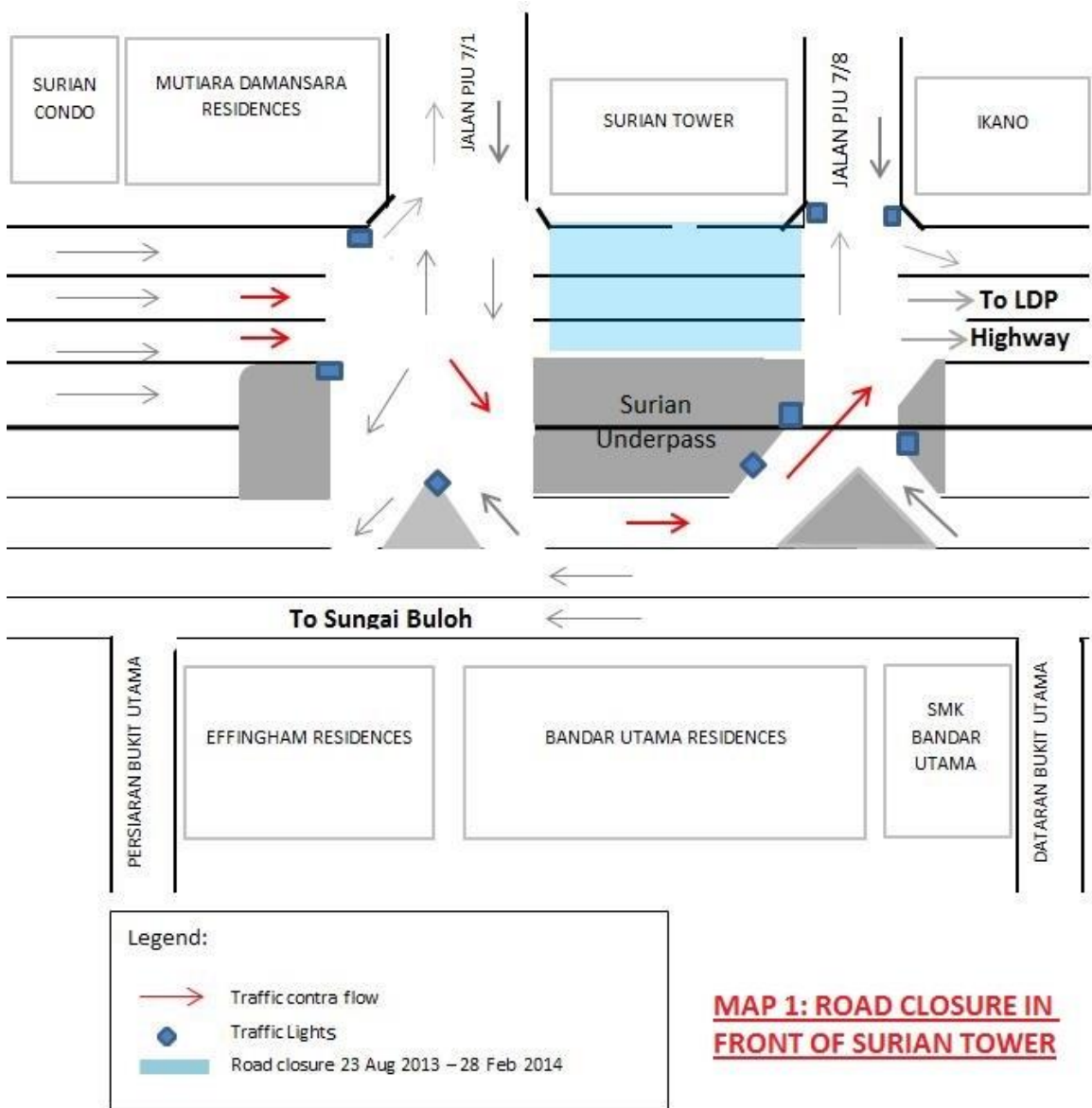
**Kuala Lumpur, 23 August 2013:** Mass Rapid Transit Corporation Sdn Bhd (MRT Corp) wishes to announce the following traffic management plan along Persiaran Surian that will be implemented from Kelab Golf Sri Selangor to IKANO stretch:

### **i. Road closure in front of Surian Tower**

There will a temporary long-term closure, involving the full closure of Persiaran Surian traffic lanes (Lebuhraya Damansara Puchong Highway bound) in front of Surian Tower, **for two (2) years beginning 26 August 2013 to 26 August 2015.** *(Please see appended Map 1.)*

This 150-metre stretch starts from the junction of Jalan PJU 7/1 and PJU 7/8, which is to facilitate preparation for the construction of the future The Curve MRT Station.

Motorists heading towards LDP Highway will be diverted to the two newly constructed lanes at the opposite side of Persiaran Surian (over the Surian Underpass).

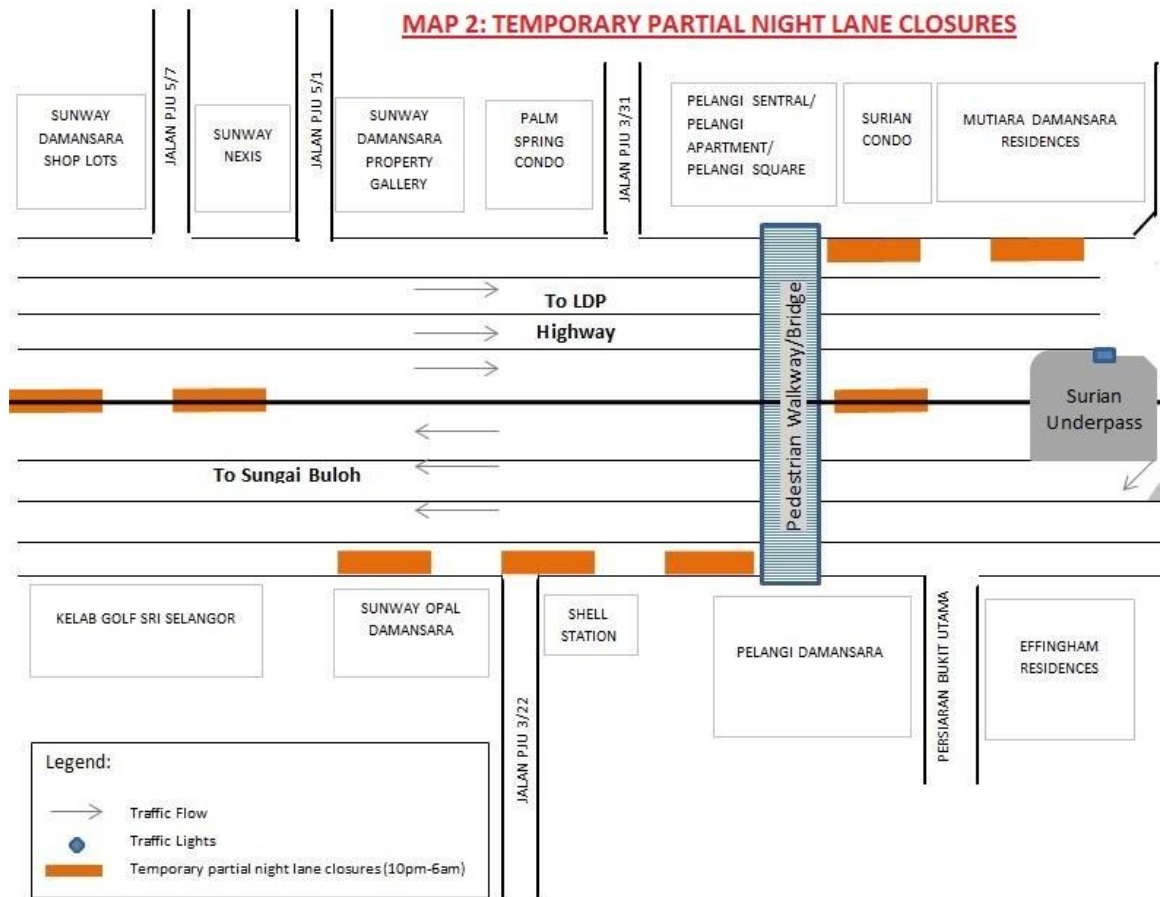


Map 1

**ii. Temporary partial night lane closures**

There will be temporary partial night lane closures implemented intermittently in short stretches along Persiaran Surian, from Dataran Sunway Nexis to Mutiara Damansara stretch (LDP and Sungai Buloh bound), beginning **26 August 2013 to 28 February 2014 from 10:00pm to 5:00am daily.** (Please see appended Map 2.)

One or two lanes may be taken up for the night works to accommodate large construction vehicles and machineries for the construction of MRT piers. Night works are done in the best interest of public safety and to reduce traffic impact at Persiaran Surian that is very busy during the day. Motorists are assured that at any one time during the temporary night closure, a minimum of one lane will be opened for traffic flow.



Map 2



“The construction of the The Curve MRT Station is challenging as it is located at a busy junction of Persiaran Surian,” explained MRT Corp Director of Strategic Communications and Public Relations, Amir Mahmood Razak.

He added that MRT Corp is aware of heavy vehicular traffic at the affected locations, given the many shopping malls and hypermarkets in the area. As such, efforts will be taken to monitor traffic flow when the traffic management plan is in effect. It is also in MRT Corp’s best efforts to minimise inconvenience and traffic impact during the construction period.

Just as we did at the Jalan Maarof/Jalan Damansara intersection at Pusat Bandar Damansara, we will ensure that flagmen will be on site to facilitate the change. Personnel from MMC Gamuda KVMRT (PDP) will also be on board to monitor this transition in the early weeks of this change.

The traffic management plan is a key part of our safety practice at all MRT construction sites as well. It will ensure that any risk of public injury is minimised. Motorists are reminded to drive carefully near MRT worksites and to follow directional signs. Safety barriers, hoardings and traffic cones will be installed at the work sites to ensure road users and pedestrians are well-informed of on-going works. In addition, a 24-hour MRT Ronda will be patrolling along the routes to attend to any emergencies.

MRT Corp wishes to apologise for any temporary inconvenience caused to the public during the construction of this world-class public transport facility that will benefit Malaysians at large.

The Sungai-Buloh Kajang Line will comprise 31 stations, and serve 1.2 million people along the route. It will also have strategic integration with KL’s existing rail transport network, namely the LRT, Monorail and KTM Komuter, as well as intra and inter-city bus routes. The end result will be better connectivity for KL and its surrounding cities, while reducing the number of cars that enter the capital.

For more information on traffic diversion, the public can visit the MRT website at [www.mymrt.com.my](http://www.mymrt.com.my) or [www.mymrt-underground.com.my](http://www.mymrt-underground.com.my), twitter @MRTMalaysia or twitter @MyMRT Underground or call the MRT Hotline at 1-800-82-6868.

***ENDS***



*For media enquiries, please contact:*

**Mrs. Ong Jee Lian**  
MMC-Gamuda KVMRT (PDP) Sdn Bhd

03-74933963 / [jeelian@mgjv-kvmrt.com.my](mailto:jeelian@mgjv-kvmrt.com.my)

**Ms. Nadia Azmi**  
MRT Corp

03-20813185 / [nadia.azmi@mymrt.com.my](mailto:nadia.azmi@mymrt.com.my)