

**MEDIA RELEASE**

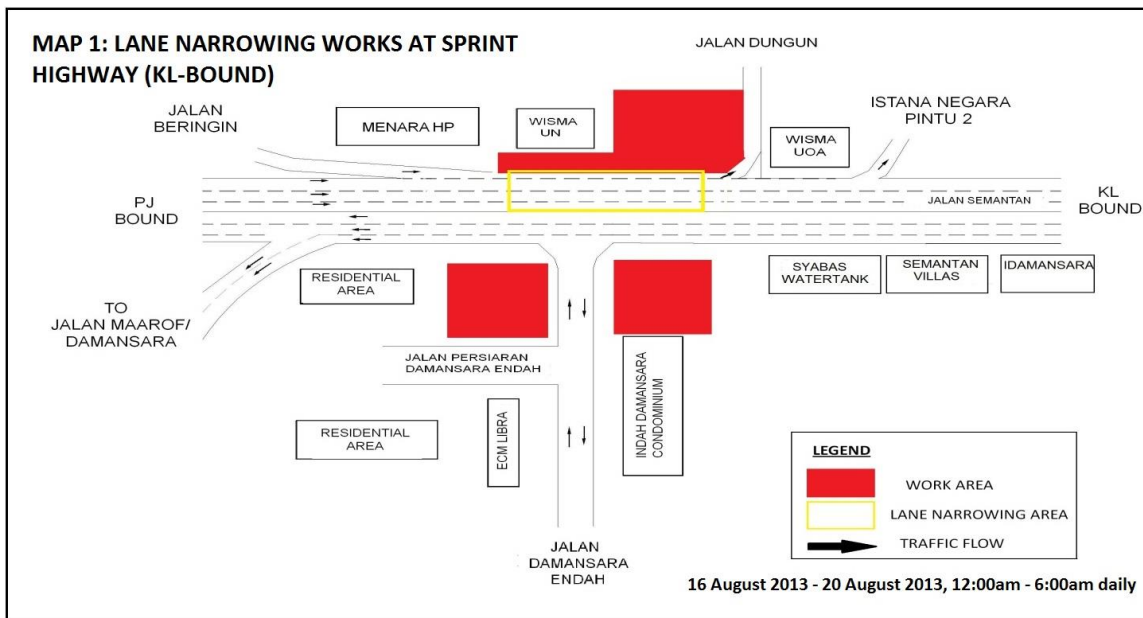
**TRAFFIC MANAGEMENT ANNOUNCEMENT FOR  
SPRINT HIGHWAY AND JALAN CHERAS**

Kuala Lumpur, 14 August 2013: Mass Rapid Transit Corporation (MRT Corp) wishes to announce the following:

**i. Lane narrowing works at Sprint Highway (KL-bound)**

All four lanes of Sprint Highway (KL-bound) opposite of Wisma UN, will undergo lane narrowing works for a period of five (5) days from 16 August 2013 to 20 August 2013, from 12:00am to 6:00am daily. (Please refer appended Map 1.)

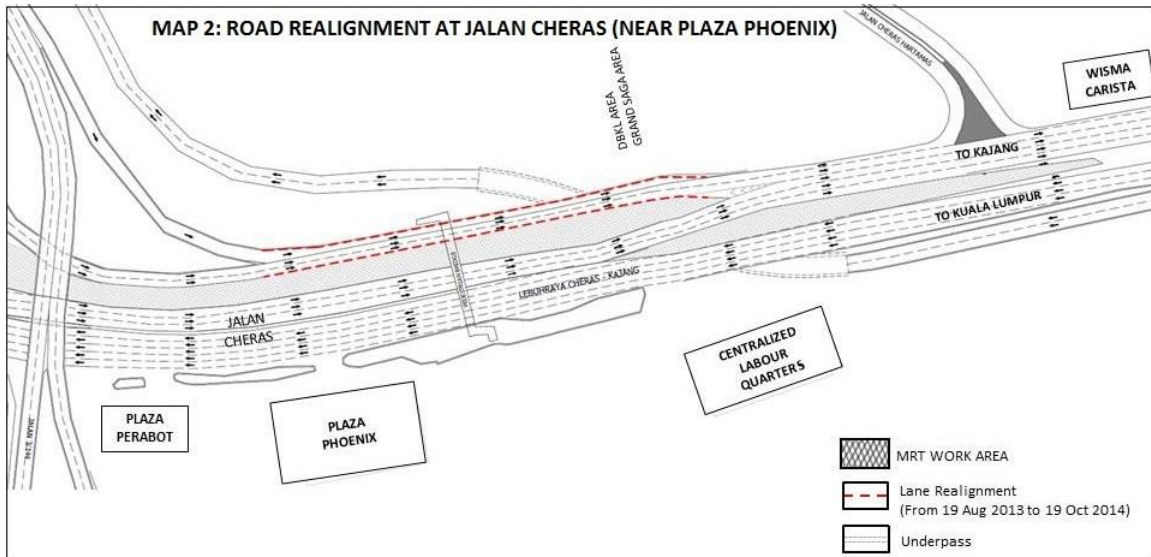
The 100-metre closure stretches from after the Jalan Beringin slip road to the junction of Jalan Dungun. As part of the safety measures, the narrowing of the four lanes will be done in stages. The lanes will be narrowed to accommodate MRT construction work in preparation for the future MRT Semantan Station, located in front of Wisma UN. Motorists are assured there will be no reduction to the number of lanes.



**ii. Long-term road realignment at Jalan Cheras (near Plaza Phoenix)**

There will be road realignment on Jalan Cheras from KM6.25 until KM6.45 near Plaza Phoenix to be in effect from 19 August 2013 to 19 October 2014.

This realignment involves a stretch of 160 metres, for both directions of the road (Kajang-bound and KL-bound). *(Please see appended Map 2.)*



This realignment is implemented as a result of the closure of the right-most lanes on both directions, to accommodate the construction of the MRT piers and Plaza Phoenix station at the median of Jalan Cheras. New lanes have been constructed for both directions whereby traffic will be realigned to. As such, there is no reduction to the number of traffic lanes at this stretch.

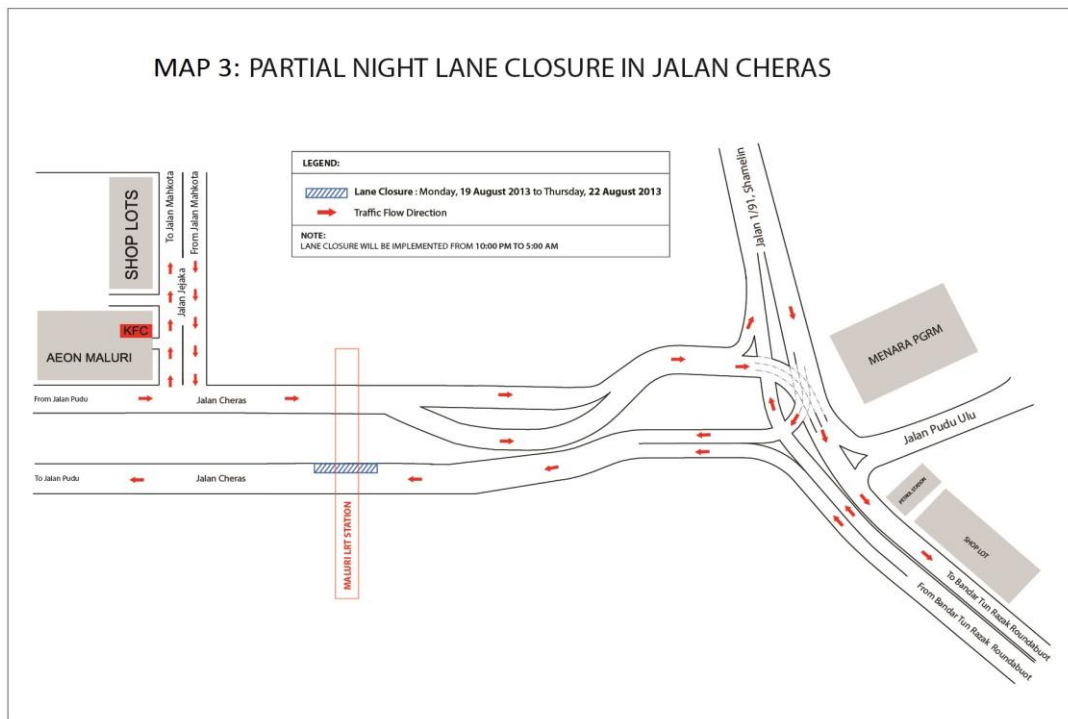
The implementation of this realignment has been deliberated thoroughly with the relevant authorities. It will be constantly monitored to ensure only minimal impact to traffic flow.

**iii. Partial night lane closure at Jalan Cheras (near LRT Maluri Station)**

There will be a partial night closure of the right-most lane in Jalan Cheras, heading towards Jalan Pudu from 19 August 2013 to 22 August 2013, from 10:00pm to 5:00am daily.

The 20-metre lane closure, located near the LRT Maluri station, is to facilitate piloting and grouting works. *(Please see appended Map 3.)*

Traffic movement is not expected to be affected as the lane closure will be conducted late at night and into the early hours of the next day.



The above traffic management plan is a key part of our safety practice at all MRT construction sites. It will ensure that any risk of public injury is minimised. Motorists are reminded to drive carefully near MRT worksites and to follow directional signs. Safety barriers, hoardings and traffic cones will be installed at the work sites to ensure road users and pedestrians are well-informed of on-going works. In addition, a 24-hour MRT Ronda will be patrolling along the routes to attend to any emergencies.

MRT Corp wishes to apologise for any temporary inconvenience caused to the public during the construction of this world-class public transport facility that will benefit Malaysians at large.

The Sungai-Buloh Kajang Line will comprise 31 stations, and serve 1.2 million people along the route. It will also have strategic integration with KL's existing rail transport network, namely the LRT, Monorail and KTM Komuter, as well as intra and inter-city bus routes. The end result will be better connectivity for KL and its surrounding cities, while reducing the number of cars that enter the capital.

For more information on traffic diversion, the public can visit the MRT website at [www.mymrt.com.my](http://www.mymrt.com.my) or [www.mymrt-underground.com.my](http://www.mymrt-underground.com.my), twitter @MRTMalaysia or twitter @MyMRT Underground or call the MRT Hotline at 1-800-82-6868.



*For media enquiries, please contact:*

**Mr. Leong Shen-Li**  
MRT Corp

03-20813182 / [leong.shen-li@mymrt.com.my](mailto:leong.shen-li@mymrt.com.my)

**Ms. Nadia Azmi**  
MRT Corp

03-20813185 / [nadia.azmi@mymrt.com.my](mailto:nadia.azmi@mymrt.com.my)