

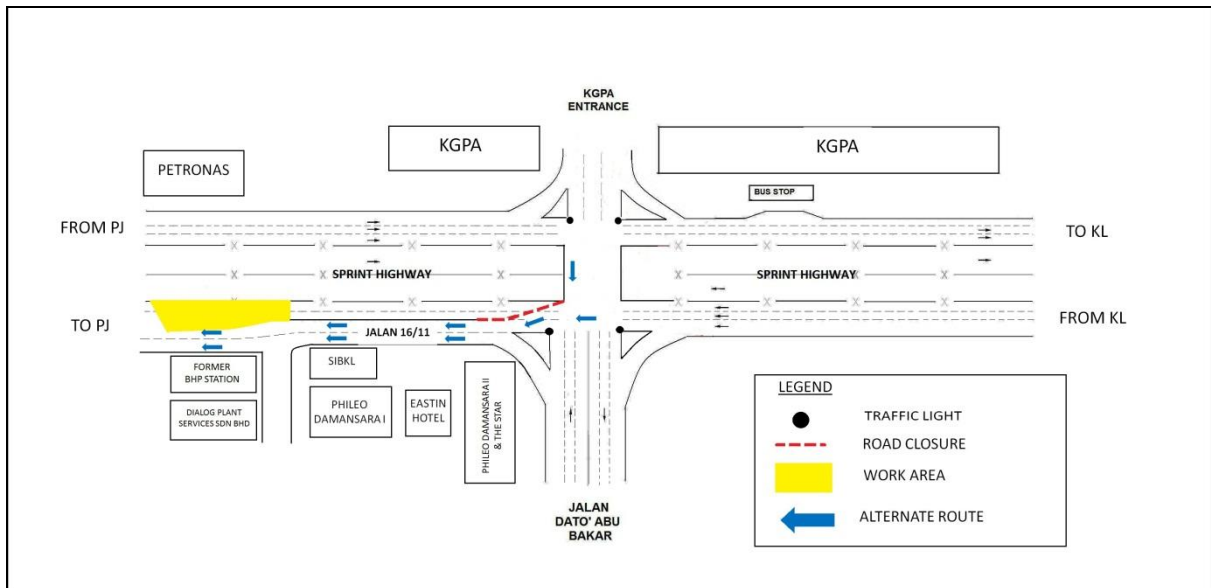
MEDIA RELEASE

TEMPORARY ROAD CLOSURE AT JALAN 16/11 PETALING JAYA

Kuala Lumpur, 9 August 2013: Mass Rapid Transit Corporation (MRT Corp) wishes to announce that the temporary closure of a section of **Jalan 16/11** (parallel to Sprint Highway) between the Jalan Dato' Abu Bakar junction and Phileo Damansara I, will take place from 13 August 2013 to 16 August 2013.

The closure of the 200m stretch of road is necessary to facilitate the relocation of utilities in front of former BHP petrol station.

During this temporary road closure, road users using Jalan 16/11 who are heading towards Petaling Jaya will be diverted to the left-most lane of the ramp alongside Phileo Damansara and Eastin Hotel. Motorists will rejoin Jalan 16/11 after the former BHP Petrol Station (*please refer to map*).



The temporary roads closures are a key part of the safety practice at all MRT construction sites. It will ensure that any risk of public injury is minimised.

Motorists are reminded to drive carefully and follow directional signs. Safety barriers, traffic cones and traffic flagman will be placed at the work site to ensure road users are pre-warned of on-going works.

MRT Corp apologizes for any temporary inconvenience caused to the public during the construction of this world-class public transport facility that will benefit Malaysians at large.



For more information, the public can visit the MRT website at www.mymrt.com.my, Twitter @MRTMalaysia or call the MRT Hotline at 1800-82-6868.

ENDS

About the MRT Project

MRT is a new rail transport system for the Klang Valley. It is part of the government's Greater Kuala Lumpur/Klang Valley's National Key Economic Area (NKEA), under the Economic Transformation Programme. The Sungai Buloh – Kajang (SBK) Line runs for 51kms, from the north-west town of Sg Buloh to the south-east city town of Kajang. Upon completion, it will comprise 31 stations, and serve 1.2 million people along the route. It will also have strategic integration with KL's existing rail transport network, namely the LRT, Monorail and KTM Komuter, as well as intra and inter-city bus routes. The end result will be better connectivity for KL and its surrounding cities, while reducing the number of cars that enter the capital.

For media enquiries, please contact:

Mr. Leong Shen-Li
MRT Corp

03-20813182 / leong.shen-li@mymrt.com.my

Ms. Nadia Azmi
MRT Corp

03-20813185 / nadia.azmi@mymrt.com.my