

MEDIA RELEASE

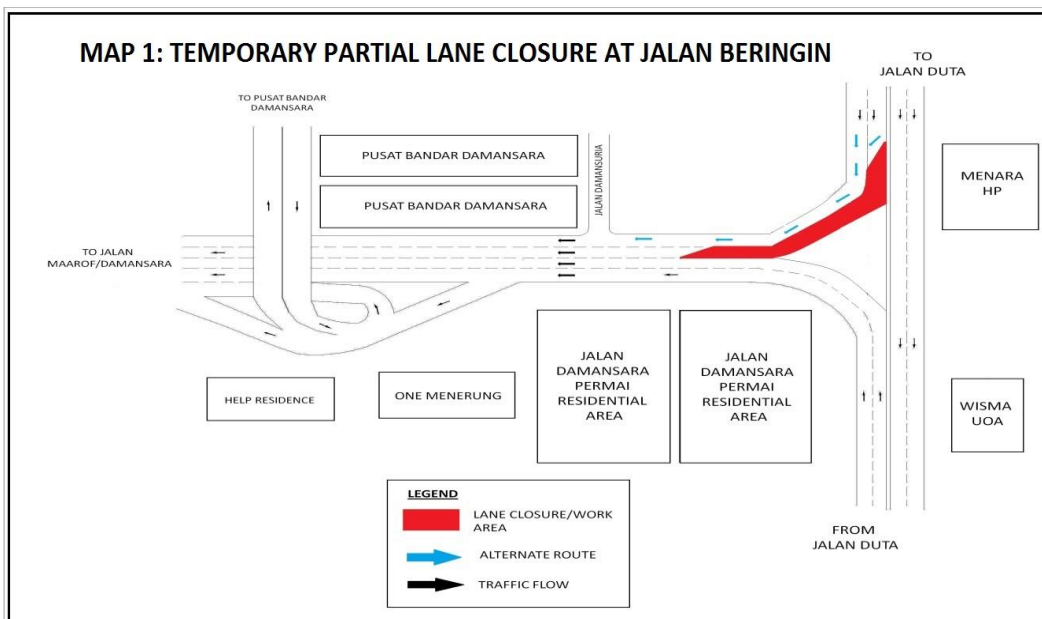
TEMPORARY PARTIAL LANE CLOSURES FOR THE MRT PROJECT

Kuala Lumpur, 6 August 2013: Mass Rapid Transit Corporation Sdn Bhd (MRT Corp) wishes to announce the following partial lane closures:

i. Jalan Beringin (near Pusat Bandar Damansara)

The left-most lane of the slip road from Jalan Beringin into SPRINT Highway (near Pusat Bandar Damansara) will undergo a temporary partial closure **from 9 August 2013 to 15 August 2013, for 24 hours daily.**

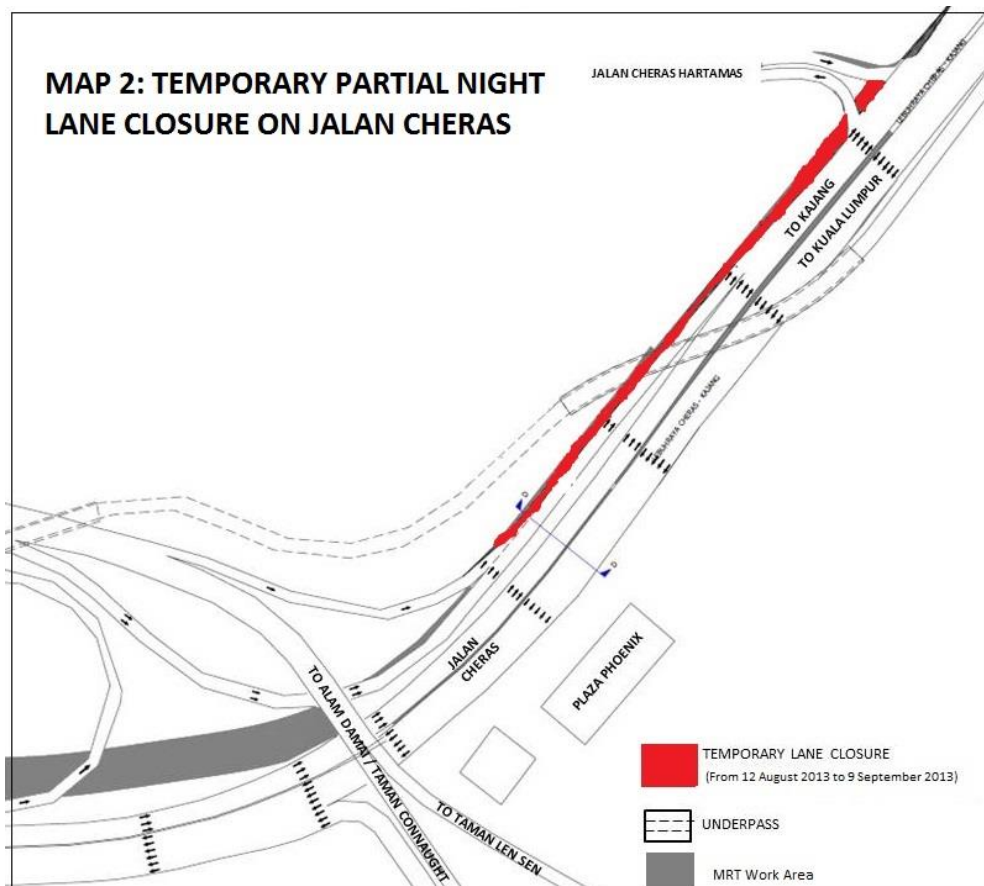
The 50-metre closure starts at the slip road from Jalan Beringin to just before the junction of Jalan Damansuria. The closure is to facilitate the relocation of utilities in preparation for the construction of MRT piers, and is implemented over the festive Hari Raya period as traffic in the city will be less busy during the period. *(Please see appended Map 1.)*



ii. Jalan Cheras (Kajang-bound)

The left-most lane of Jalan Cheras from KM6.20 near the pedestrian bridge to KM6.45 before the junction turning into Taman Cheras Hartamas will be partially closed, effective **12 August 2013 to 9 September 2013, from 10:00pm to 5:00am.** (Please see appended Map 2.)

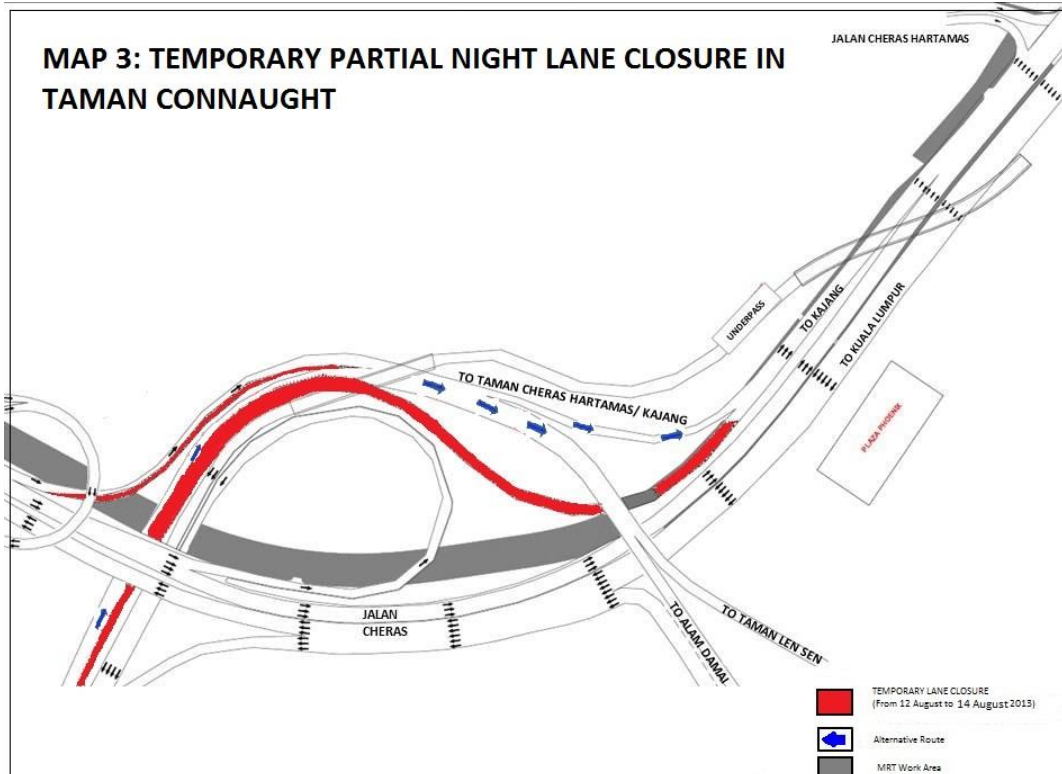
This 260-metre night lane closure is to facilitate utility relocation works for the MRT.



iii. Taman Connaught (Kajang-bound)

The slip road from Taman Connaught heading towards Jalan Cheras (Kajang-bound) and right-most lane on East-West Link will be partially closed for a stretch of 200 metres, effective **12 August 2013 to 14 August 2013, from 10:00pm to 5:00am.** (Please see appended Map 3.)

This closure involves the slip road coming from Jalan Cheras near Leisure Mall heading towards Alam Damai and Taman Len Sen. As an alternative, motorists coming from Taman Connaught and Leisure Mall are advised to use the left-most lane to get to Taman Cheras Hartamas or Kajang.



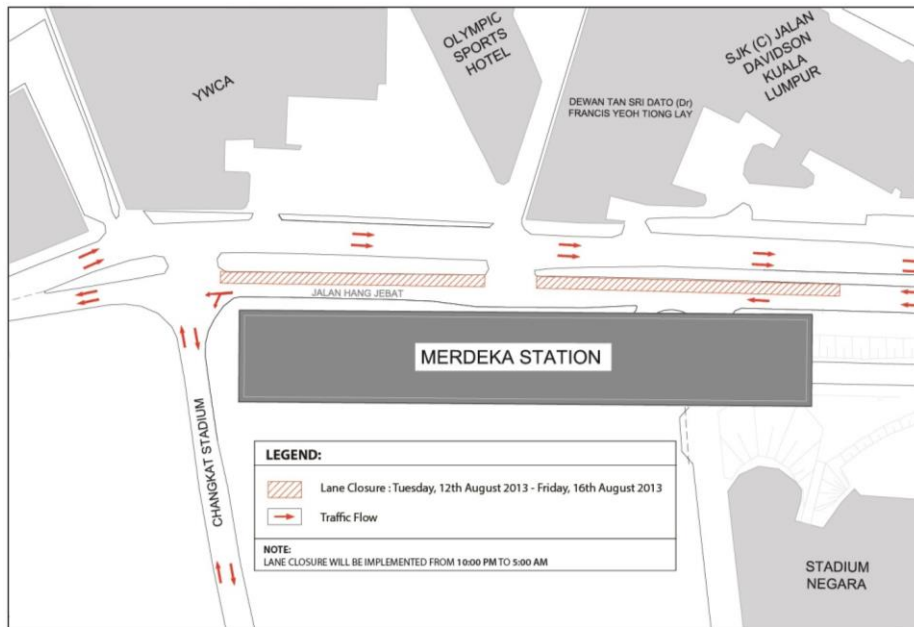
The right-most lane on East-West Link will be closed to enable sufficient taper for the slip road closure.

iv. Jalan Hang Jebat

The right-most lane of Jalan Hang Jebat heading towards Jalan Sultan, will be partially closed for five nights beginning **12 August 2013 to 16 August 2013, from 10:00pm to 5:00am.**

The temporary partial night lane closure involves a 170-metre stretch in front of the MRT Merdeka Station construction site. *(Please see appended Map 4.)*

MAP 4: TEMPORARY PARTIAL NIGHT LANE CLOSURE AT JALAN HANG JEBAT



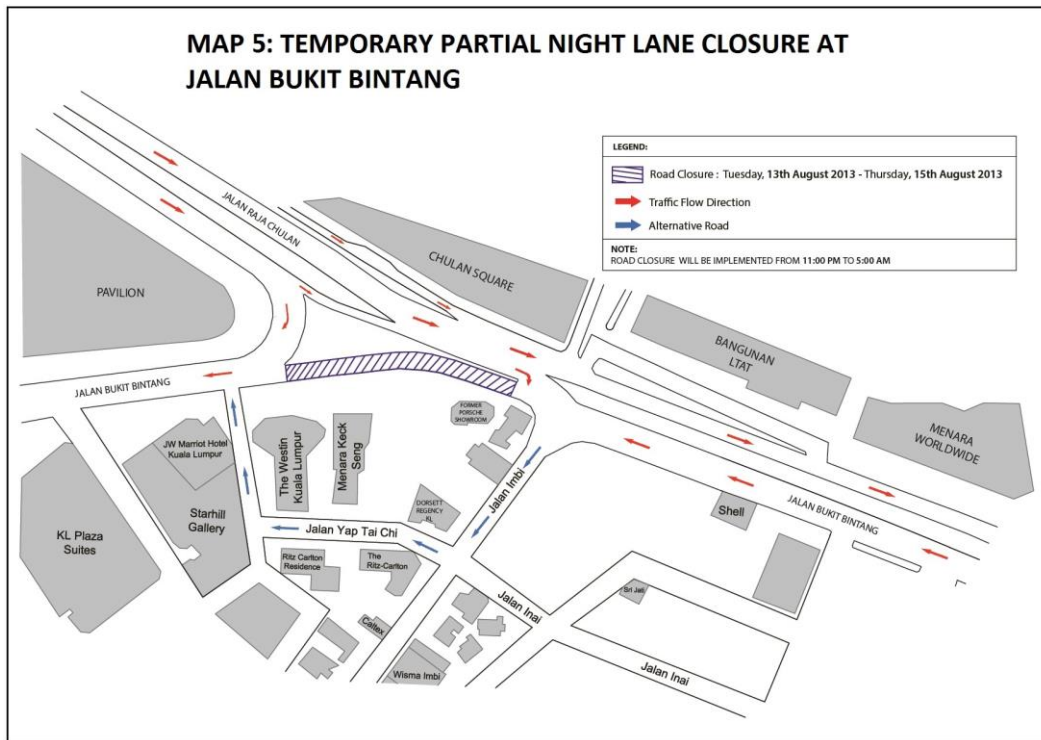
The night closure is necessary to facilitate tree cutting and street light dismantling along the road median. Traffic movement is not expected to be affected as the lane closure will be conducted late at night and into the early hours of the next day.

v. Jalan Bukit Bintang

There will be a temporary night road closure at Jalan Bukit Bintang, in front of the former Porsche showroom, **between 13 August 2013 and 15 August 2013, from 11:00pm to 5:00am.**

The 2-night road closure, involving a 100-metre stretch of the road heading towards Pavilion Kuala Lumpur is to facilitate mobilisation of machineries at the affected location.

As an alternative, motorists can use Jalan Imbi towards Jalan Yap Tai Chi to get to Pavilion Kuala Lumpur. *(Please see appended Map 5.)*



These closures are a key part of our safety practice at all MRT construction sites. It will ensure that any risk of public injury is minimised. Motorists are reminded to drive carefully near MRT worksites and to follow directional signs. Safety barriers, hoardings and traffic cones will be installed at the work sites to ensure road users and pedestrians are well-informed of on-going works. In addition, a 24-hour MRT Ronda will be patrolling along the routes to attend to any emergencies.

MRT Corp wishes to apologise for any temporary inconvenience caused to the public during the construction of this world-class public transport facility that will benefit Malaysians at large.

The Sungai-Buloh Kajang Line will comprise 31 stations, and serve 1.2 million people along the route. It will also have strategic integration with KL's existing rail transport network, namely the LRT, Monorail and KTM Komuter, as well as intra and inter-city bus routes. The end result will be better connectivity for KL and its surrounding cities, while reducing the number of cars that enter the capital.

For more information on traffic diversion, the public can visit the MRT website at www.mymrt.com.my or www.mymrt-underground.com.my, twitter @MRTMalaysia or twitter @MyMRT Underground or call the MRT Hotline at 1-800-82-6868.



For media enquiries, please contact:

Mr. Leong Shen-Li
MRT Corp

03-20813182 / leong.shen-li@mymrt.com.my

Ms. Nadia Azmi
MRT Corp

03-20813185 / nadia.azmi@mymrt.com.my