



MEDIA RELEASE

TEMPORARY NIGHT LANE CLOSURE OF SLIP ROAD AT MAAROF INTERCHANGE

Kuala Lumpur, 2 August 2013: Mass Rapid Transit Corporation Sdn Bhd (MRT Corp) wishes to announce that the slip road at Maarof Interchange which was opened to public on 31 July 2013 will be temporarily closed only at night **beginning 4 August 2013 to 31 August 2013, from 9:30pm to 6:00am daily.** This is to enable construction works for the future MRT Pusat Bandar Damansara Station and piers for the MRT guideway.

During the closure, traffic from Jalan Maarof (from Bangsar) heading towards SPRINT Highway (Petaling Jaya-bound) will be diverted to Jalan Johar, going around Pusat Bandar Damansara Complex and back to SPRINT Highway. *(Please see appended map.)*

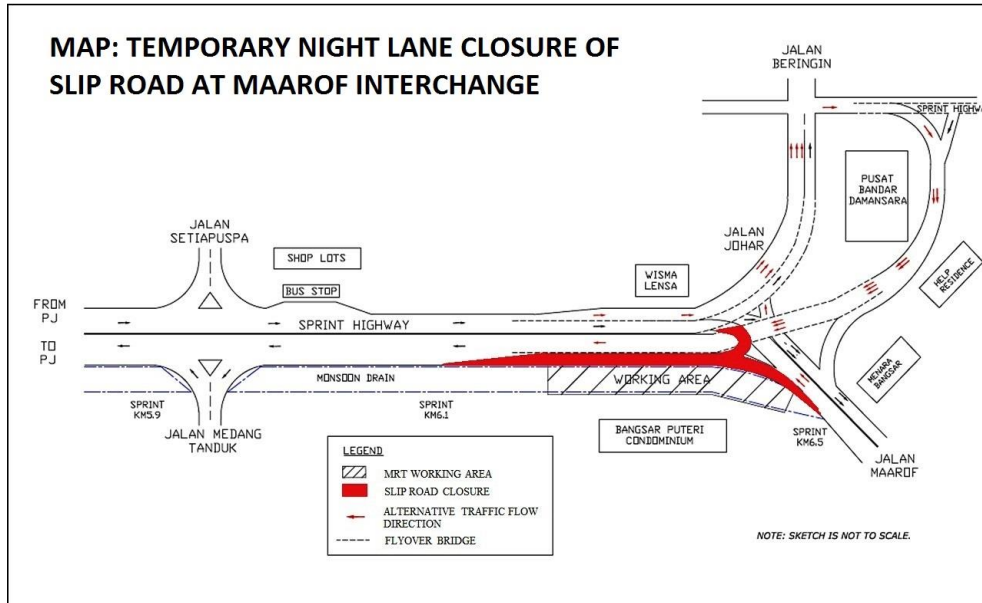
"We would like to thank motorists and residents in the nearby area for their patience and cooperation during the slip road closure which started in March this year," said Amir Mahmood Razak, Director of Strategic Communications and Public Relations of MRT Corp.

"However the slip road must now be closed, but only during non-peak hours, for further MRT construction works," he explained.

He added that MRT Corp seeks the understanding of motorists on this temporary night closure.

This closure is a key part of our safety practice at all MRT construction sites. It will ensure that any risk of public injury is minimised. Motorists are reminded to drive carefully near MRT worksites and to follow directional signs. Safety barriers, hoardings and traffic cones will be installed at the work sites to ensure road users and pedestrians are well-informed of on-going works. In addition, a 24-hour MRT Ronda will be patrolling along the routes to attend to any emergencies.

MRT Corp wishes to apologise for any temporary inconvenience caused to the public during the construction of this world-class public transport facility that will benefit Malaysians at large.



The Sungai-Buloh Kajang Line will comprise 31 stations, and serve 1.2 million people along the route. It will also have strategic integration with KL’s existing rail transport network, namely the LRT, Monorail and KTM Komuter, as well as intra and inter-city bus routes. The end result will be better connectivity for KL and its surrounding cities, while reducing the number of cars that enter the capital.

For more information on traffic diversion, the public can visit the MRT website at www.mymrt.com.my or www.mymrt-underground.com.my, twitter @MRTMalaysia or twitter @MyMRT Underground or call the MRT Hotline at 1-800-82-6868.

ENDS

For media enquiries, please contact:

Mrs. Ong Jee Lian
MMC-Gamuda KVMRT (PDP) Sdn Bhd

03-74933963 / jeelian@gjv-kvmrt.com.my

Ms. Nadia Azmi
MRT Corp

03-20813185 / nadia.azmi@mymrt.com.my