

MEDIA RELEASE

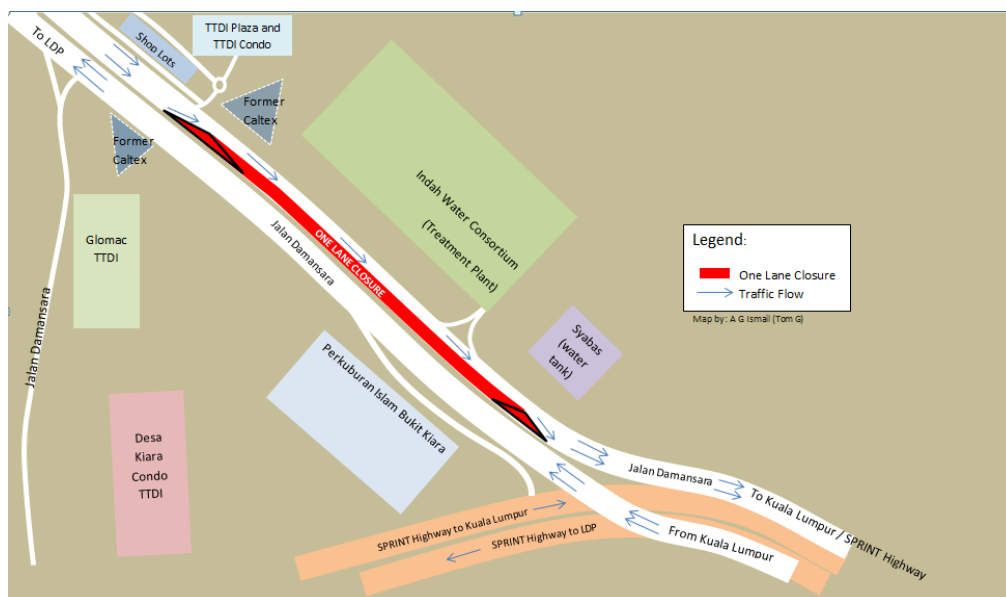
TEMPORARY PARTIAL LANE CLOSURES ON JALAN DAMANSARA, JALAN BUKIT BINTANG AND JALAN CHERAS

Kuala Lumpur, 22 July 2013: Mass Rapid Transit Corporation Sdn Bhd (MRT Corp) wishes to announce temporary partial lane closures at the following locations:

i. Jalan Damansara

A temporary partial night lane closure along Jalan Damansara will be implemented starting **24 July 2013 to 7 August 2013 from 10:00pm to 5:00am**. This will involve a 450-metre stretch starting from the former Caltex petrol station to the Syabas water tank (Kuala Lumpur-bound). (Please see appended Map 1.)

This temporary partial night closure is to facilitate the construction of the future Taman Tun Dr Ismail MRT station and piers. The closure will be conducted at night during off-peak hours, to minimise traffic impact and to safeguard motorists' safety.

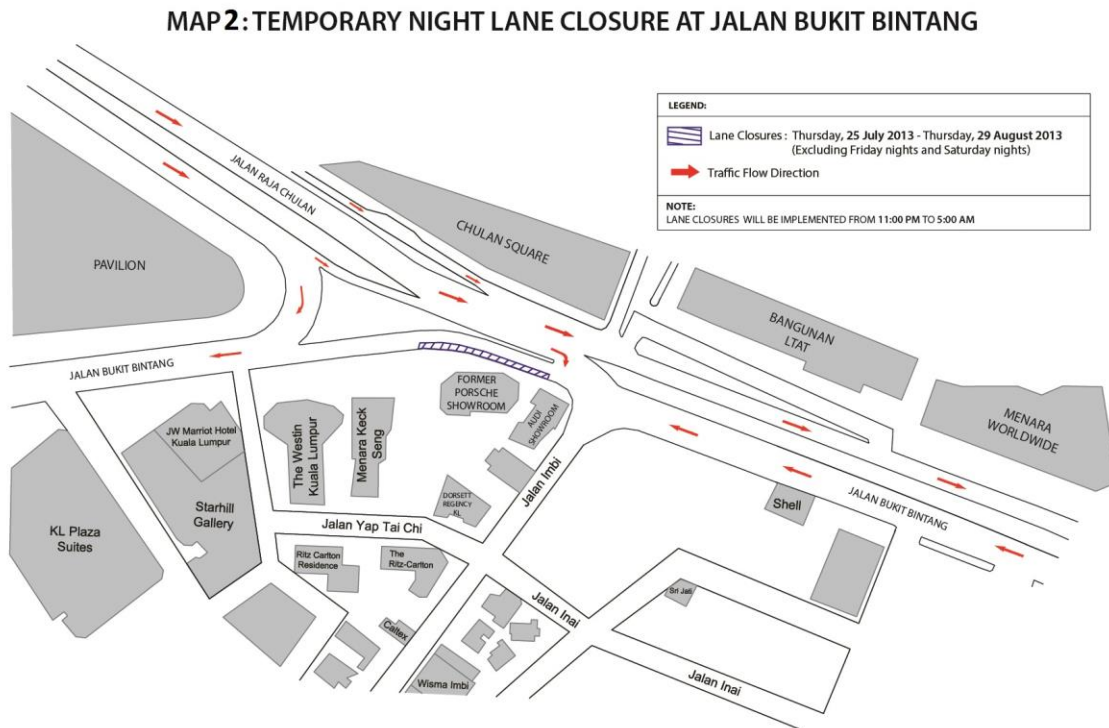


Map 1: Temporary Partial Night Lane Closure along Jalan Damansara

ii. Jalan Bukit Bintang

A temporary partial night lane closure will be carried out at Jalan Bukit Bintang, located in front of the former Porsche showroom from 25 July 2013 to 29 August 2013, between 11:00pm to 5:00am. (Please see appended Map 2.)

The night closure is necessary to facilitate water pipe relocation works. Traffic movement is not expected to be affected as the lane closure will be done late at night into the early hours of the next day, except for Fridays and Saturdays.

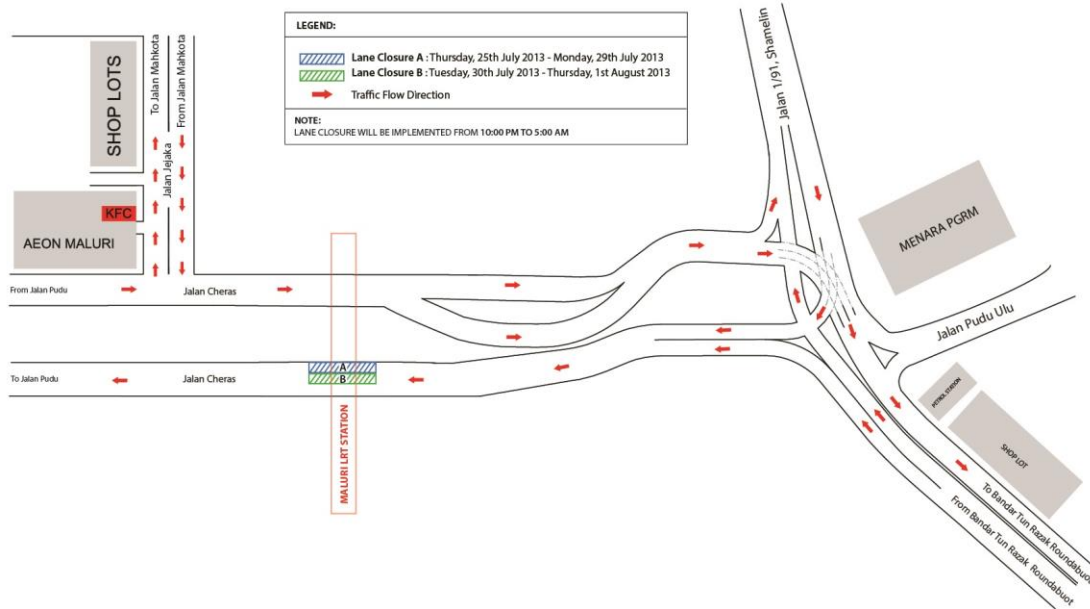


iii. Jalan Cheras

Temporary lane closures will be implemented on Jalan Cheras, near the Maluri LRT station, beginning 25 July 2013 to 1 August 2013, from 10:00pm to 5:00am. (Please see appended Map 3.)

The closures, involving a 20-metre stretch towards Jalan Pudu, will be closed in stages. Two lanes will be affected during the closures but only one lane will be closed at any one time. The closures are necessary to facilitate piloting and grouting works.

MAP 3: TEMPORARY LANE CLOSURE IN STAGES IN JALAN CHERAS



These closures are a key part of our safety practice at all MRT construction sites. It will ensure that any risk of public injury is minimised. Motorists are reminded to drive carefully near MRT worksites and to follow directional signs. Safety barriers, hoardings and traffic cones will be installed at the work sites to ensure road users and pedestrians are well-informed of on-going works. In addition, a 24-hour MRT Ronda will be patrolling along the routes to attend to any emergencies.

MRT Corp wishes to apologise for any temporary inconvenience caused to the public during the construction of this world-class public transport facility that will benefit Malaysians at large.

The Sungai-Buloh Kajang Line will comprise 31 stations, and serve 1.2 million people along the route. It will also have strategic integration with KL's existing rail transport network, namely the LRT, Monorail and KTM Komuter, as well as intra and inter-city bus routes. The end result will be better connectivity for KL and its surrounding cities, while reducing the number of cars that enter the capital.



For more information on traffic diversion, the public can visit the MRT website at www.mymrt.com.my or www.mymrt-underground.com.my, twitter @MRTMalaysia or twitter @MyMRT Underground or call the MRT Hotline at 1-800-82-6868.

For media enquiries, please contact:

Mrs. Ong Jee Lian
MMC-Gamuda KVMRT (PDP) Sdn Bhd

03-74933963 / jeelian@mgjv-kvmrt.com.my

Ms. Jalina Joheng
MMC-Gamuda KVMRT (T) Sdn Bhd

03-23858625 / jalina@kvmrt-ug.com.my

Ms. Nadia Azmi
MRT Corp

03-20813185 / nadia.azmi@mymrt.com.my