

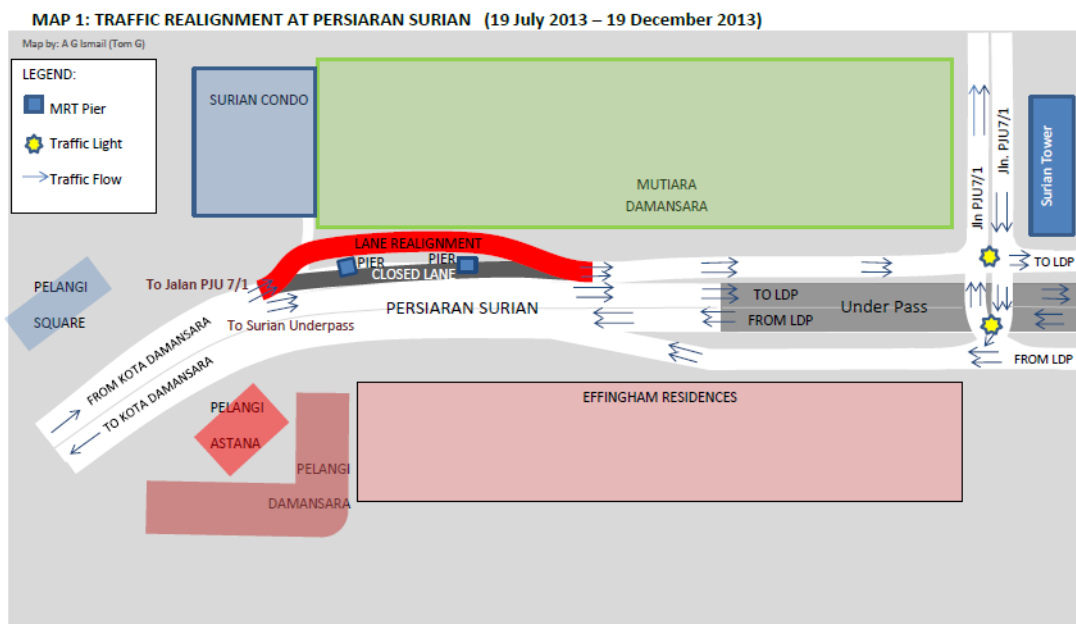
MEDIA RELEASE

TRAFFIC MANAGEMENT PLAN FOR PERSIARAN SURIAN AND JALAN TEKNOLOGI AREA

Kuala Lumpur, 17 July 2013: Mass Rapid Transit Corporation Sdn Bhd (MRT Corp) wishes to announce the traffic management plan to be implemented at the following stretches of Persiaran Surian and Jalan Teknologi, Kota Damansara:

i. Persiaran Surian (after Surian Condominium)

There will be a traffic realignment of lanes beginning 19 July 2013 to 19 December 2013, in front of Surian Condominium for a stretch of 50 metres. An additional lane has been added to the current three lanes at Persiaran Surian to accommodate the construction of MRT piers at this area. As such, two lanes will be dedicated for motorists heading towards Jalan PJU 7/1, and the other two lanes to the Surian Underpass (LDP-bound). *(Please see appended Map 1.)*

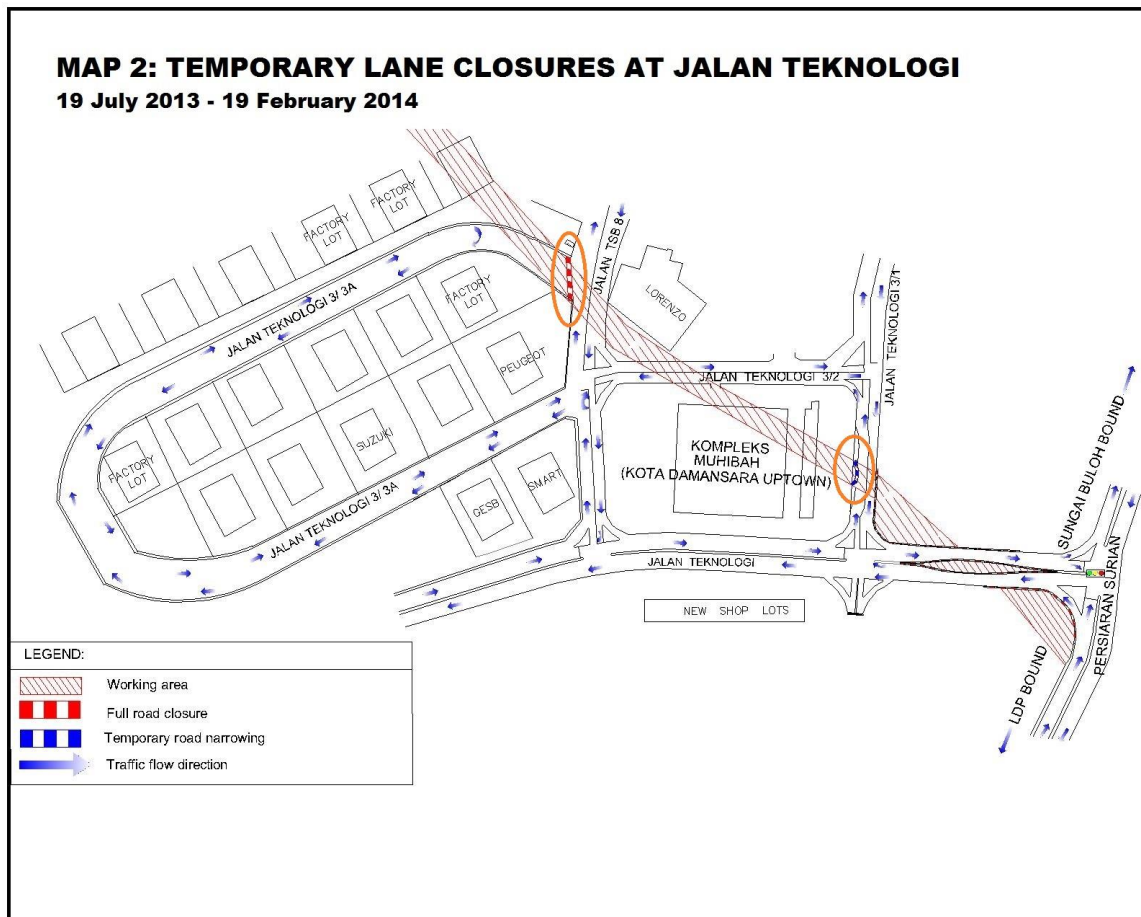


ii. Jalan Teknologi

There will be long-term lane closures at Jalan Teknologi beginning 19 July 2013 to 19 February 2014 at the following locations:

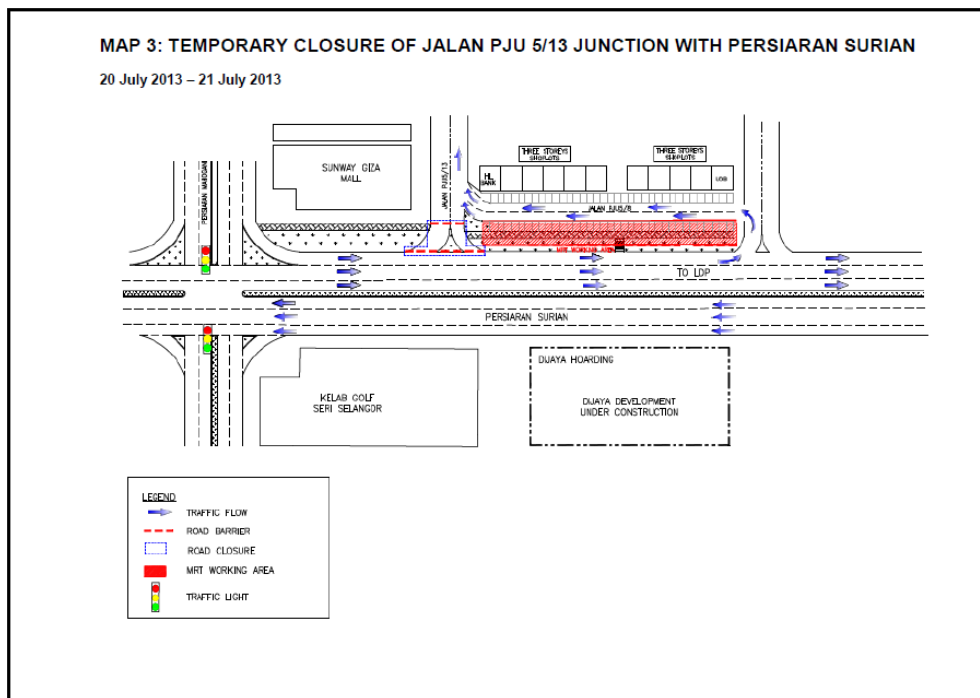
- *Exit junction of Jalan Teknologi 3/3A and Jalan TSB 8* – a full road closure will be implemented at this stretch. The existing one-way traffic will be changed to a two-way direction throughout the duration of this closure. Motorists are directed to enter and exit at the entry of Jalan Teknologi 3/3A where the Peugeot car showroom is situated.
- *Jalan Teknologi 3/1* – temporary lane narrowing will be implemented for a stretch of 50 metres.

(Please see appended Map 2.)



iii. Jalan PJU 5/13 junction with Persiaran Surian

There will be a one-night closure of the Jalan PJU 5/13 junction with Persiaran Surian from **20 July 2013 (10:00pm) to 21 July 2013 (6:00am)**. During the temporary closure, motorists from Persiaran Surian (towards IKANO) who wish to turn into Jalan PJU 5/13 will be directed to enter from Jalan PJU 5/8. (Please see appended Map 3.)



This traffic management plan is a key part of our safety practice at all MRT construction sites. It will ensure that any risk of public injury is minimised. Motorists are reminded to drive carefully near MRT worksites and to follow directional signs. Safety barriers, hoardings and traffic cones will be installed at the work sites to ensure road users and pedestrians are well-informed of on-going works. In addition, a 24-hour MRT Ronda will be patrolling along the routes to attend to any emergencies.

MRT Corp wishes to apologise for any temporary inconvenience caused to the public during the construction of this world-class public transport facility that will benefit Malaysians at large.

The Sungai-Buloh Kajang Line will comprise 31 stations, and serve 1.2 million people along the route. It will also have strategic integration with KL's existing rail transport network, namely



the LRT, Monorail and KTM Komuter, as well as intra and inter-city bus routes. The end result will be better connectivity for KL and its surrounding cities, while reducing the number of cars that enter the capital.

For more information on traffic diversion, the public can visit the MRT website at www.mymrt.com.my or www.mymrt-underground.com.my, twitter @MRTMalaysia or twitter @MyMRT Underground or call the MRT Hotline at 1-800-82-6868.

For media enquiries, please contact:

Mrs. Ong Jee Lian
MMC-Gamuda KVMRT (PDP) Sdn Bhd

03-74933963 / jeelian@mgjv-kvmrt.com.my

Ms. Nadia Azmi
MRT Corp

03-20813185 / nadia.azmi@mymrt.com.my