



MEDIA RELEASE

TRAFFIC MANAGEMENT ANNOUNCEMENT

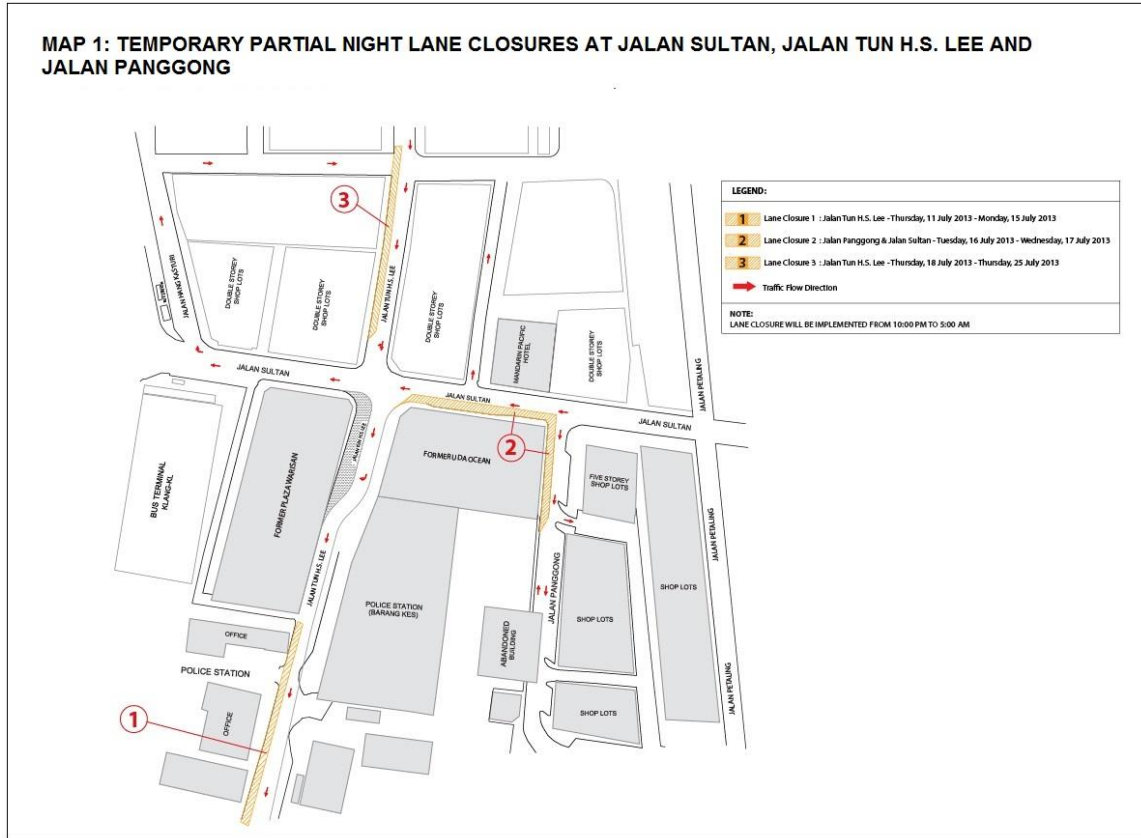
Kuala Lumpur, 8 July 2013: Mass Rapid Transit Corporation Sdn Bhd (MRT Corp) wishes to announce the implementation of the following traffic management plans:

i. Temporary partial night lane closures at Jalan Sultan, Jalan Tun H.S. Lee and Jalan Panggong

The night closures will be implemented beginning **11 July 2013 to 25 July 2013, from 10:00pm to 5:00am**, involving only one lane at each of the stretches of Jalan Sultan, Jalan Tun H.S. Lee and Jalan Panggong. Please see the table below for details of the closures.

Affected Lanes	Dates of closures	Stretches
Jalan Tun H.S. Lee	11 July 2013 – 15 July 2013 18 July 2013 – 25 July 2013	1. 80-metre stretch from the Jalan Tun H.S.Lee traffic police station (heading towards Federal Highway) 2. 100-metre stretch in front of the Mariamman Hindu Temple (heading towards Jalan Tun H.S. Lee traffic police station)
Jalan Sultan	16 July 2013 – 17 July 2013	1. 60-metre stretch, opposite Mandarin Pacific Hotel (heading towards former Klang Bus Terminal)
Jalan Panggong	16 July 2013 – 17 July 2013	1. 35-metre stretch, next to Lok Ann Hotel (heading towards Jalan Sultan)

The temporary night closures are to facilitate utility works. Traffic movement is not expected to be affected over the 14-day period as the closures will be done late at night and into the early hours of the next day. (Please see appended Map 1.)





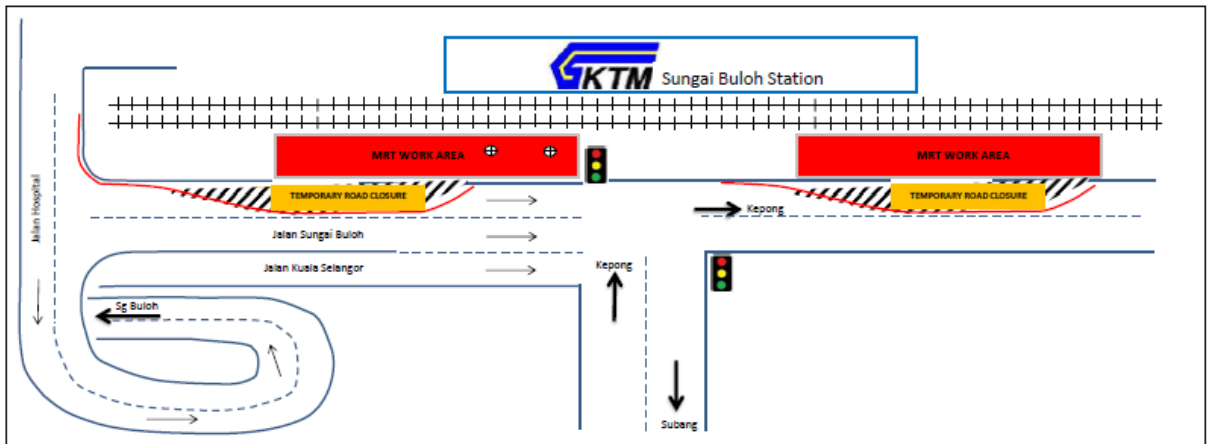
ii. Temporary partial night lane closure in front of KTM Sungai Buloh (Kepong-bound)

This temporary partial night lane closure will begin **12 July 2013 to 31 July 2013, from 10:00pm to 5:00am** at two stretches for a length of 100 metres, at the left-most lane of Jalan Sungai Buloh heading towards Kepong (directly in front of KTM Sungai Buloh Station).

This is to facilitate construction works in preparing temporary access for MRT works located inside the Keretapi Tanah Melayu (KTM) Sungai Buloh Station. *(Please see appended Map 2.)*

MAP 2: TEMPORARY PARTIAL NIGHT LANE CLOSURE IN FRONT OF KTM SUNGAI BULOH

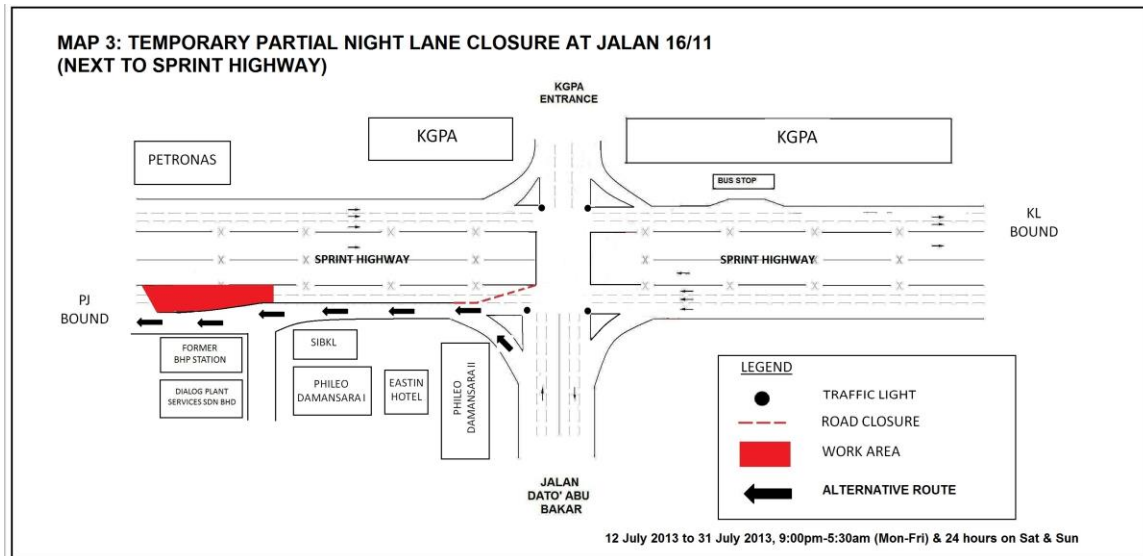
12 July 2013 to 31 July 2013, 10:00pm - 5:00am



iii. Extension of temporary partial night closure at Jalan 16/11 (next to Sprint Highway)

The temporary partial night closure at Jalan 16/11 which is currently in place will be extended from **12 July 2013 to 31 July 2013, at 9:00pm to 5:30am (Monday to Friday) and 24 hours on Saturday and Sunday.** This 200-metre closure stretch is next to Sprint Highway (Petaling Jaya-bound) between the Jalan Dato' Abu Bakar traffic light junction and Pusat Dagangan Phileo Damansara.

The extension of the closure is necessary as works for utility relocation in front of the former BHP petrol station requires a longer time to complete. During the road closure, motorists heading towards Petaling Jaya on Jalan 16/11 will be diverted to the left-most lane, up the ramp alongside Eastin Hotel before connecting back to the main road. *(Please see appended Map 3.)*

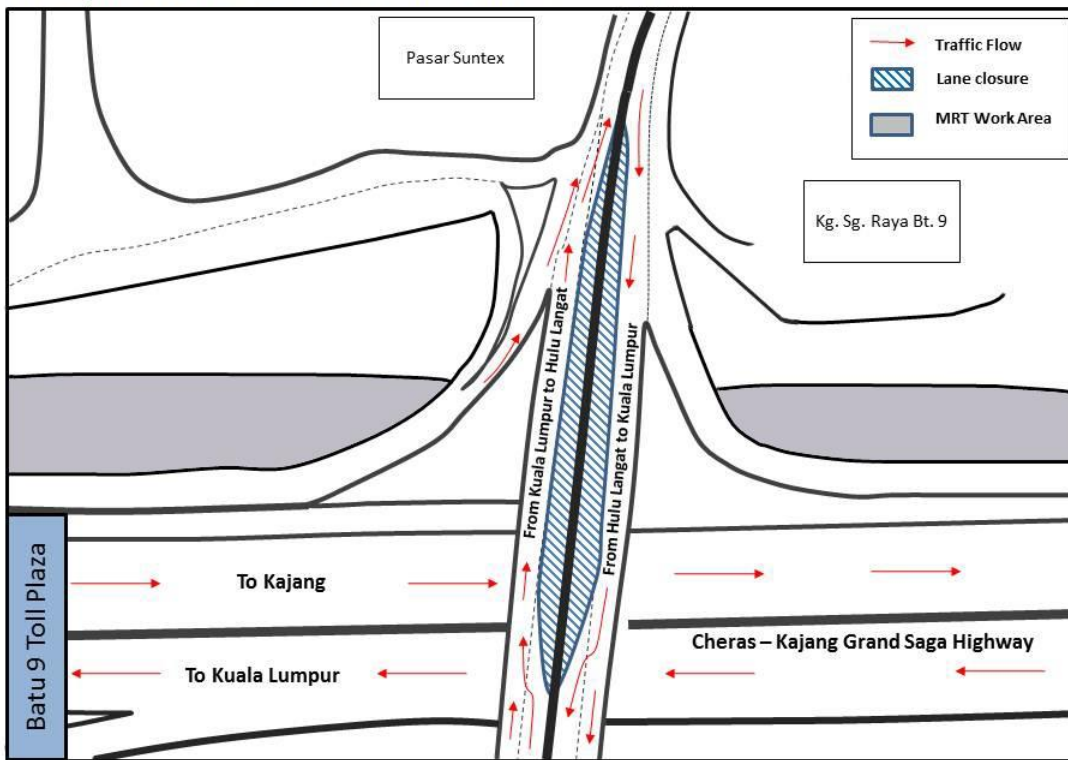


iv. Temporary partial lane closure on Hulu Langat Interchange at Cheras-Kajang (Grand Saga) Highway

The right-most lane on the Hulu Langat Interchange will be partially closed for a length of 100 metres for both directions, from 12 July 2013 to 30 April 2014. This is to facilitate the construction of MRT piers. (Please see appended Map 4.)

The closure involves a comprehensive traffic management plan that has been perused extensively by Grand Saga Sdn Bhd and Lembaga Lebuhraya Malaysia (LLM) to ensure minimal disruption to traffic.

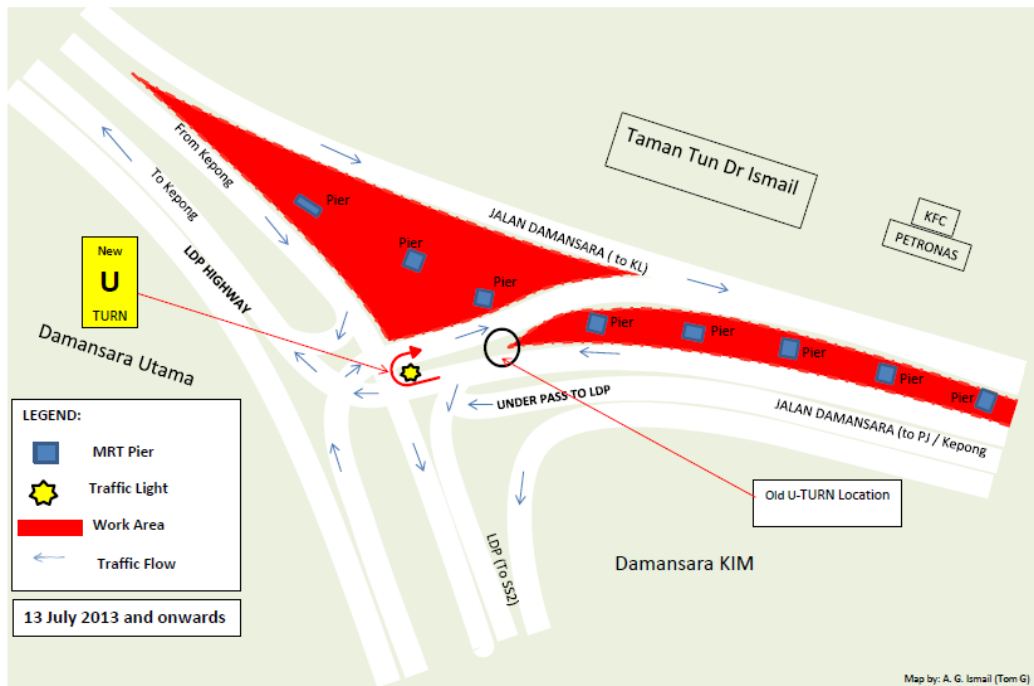
MAP 4: TEMPORARY PARTIAL LANE CLOSURE ON CHERAS-KAJANG (GRAND SAGA) HIGHWAY NEAR HULU LANGAT INTERCHANGE



v. U-turn Realignment at Jalan Damansara into Damansara-Puchong Highway (LDP)

The U-turn will be permanently realigned (returning to Kuala Lumpur direction) starting **13 July 2013 and onwards**. The U-turn which is currently located before the traffic light junction into LDP will be shifted to the traffic light junction. Motorists travelling on Jalan Damansara from Kuala Lumpur can still access Taman Tun Dr Ismail using the relocated U-turn. The number of traffic lanes remain unchanged along Jalan Damansara. *(Please see appended Map 5.)*

MAP 5: U-TURN REALIGNMENT AT JALAN DAMANSARA INTO DAMANSARA-PUCHONG HIGHWAY (LDP)



The relocation of the U-turn is needed to allow the construction of MRT piers for the future Taman Tun Dr. Ismail MRT Station that will be located in the road median of Jalan Damansara. It is also an enhancement of the traffic management plan for this area to ensure uninterrupted traffic flow during the construction of the MRT project.

The traffic management plan is a key part of our safety practice at all MRT construction sites. It will ensure that any risk of public injury is minimised. Motorists are reminded to drive carefully near MRT worksites and to follow directional signs. Safety barriers, hoardings and traffic cones will be installed at the work sites to ensure road users and pedestrians are well-informed of on-going works. In addition, a 24-hour MRT Ronda will be patrolling along the routes to attend to any emergencies.



MRT Corp wishes to apologise for any temporary inconvenience caused to the public during the construction of this world-class public transport facility that will benefit Malaysians at large.

The Sungai-Buloh Kajang Line will comprise 31 stations, and serve 1.2 million people along the route. It will also have strategic integration with KL's existing rail transport network, namely the LRT, Monorail and KTM Komuter, as well as intra and inter-city bus routes. The end result will be better connectivity for KL and its surrounding cities, while reducing the number of cars that enter the capital.

For more information on traffic diversion, the public can visit the MRT website at www.mymrt.com.my or www.mymrt-underground.com.my, twitter @MRTMalaysia or twitter @MyMRT Underground or call the MRT Hotline at 1-800-82-6868.

For media enquiries, please contact:

Mr. Leong Shen-Li
MRT Corp

03-20813182 / leong.shen-li@mymrt.com.my

Ms. Nadia Azmi
MRT Corp

03-20813185 / nadia.azmi@mymrt.com.my