

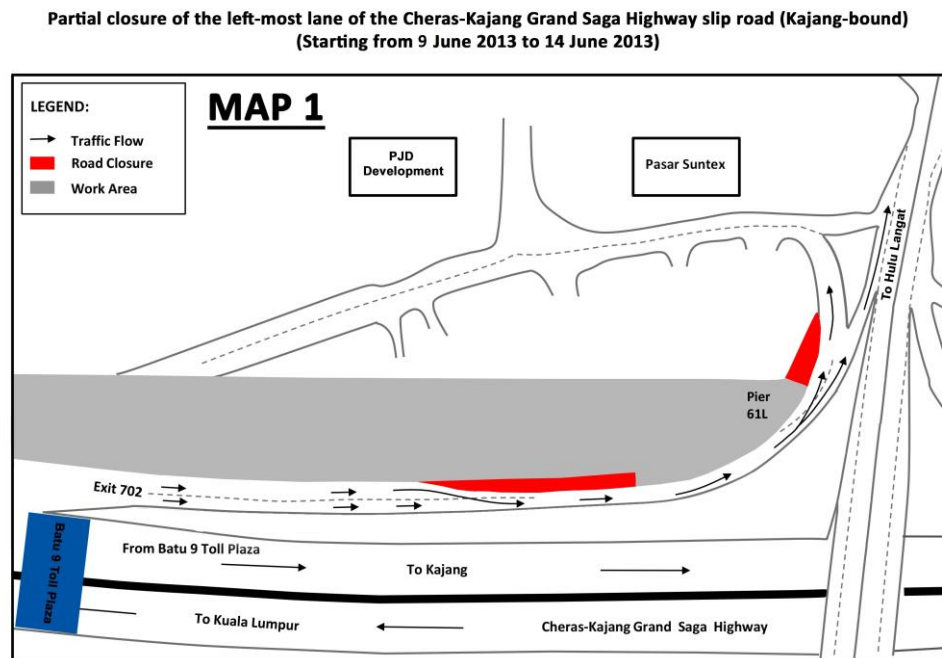
MEDIA RELEASE

PARTIAL LANE CLOSURES ON CHERAS-KAJANG (GRAND SAGA) HIGHWAY

Kuala Lumpur, 6 June 2013: Mass Rapid Transit Corporation (MRT Corp) wishes to announce the following closures on the Cheras-Kajang (Grand Saga) Highway, located near Exit 702 of the Hulu Langat Interchange (Kajang-bound):

i. Left-most Lane

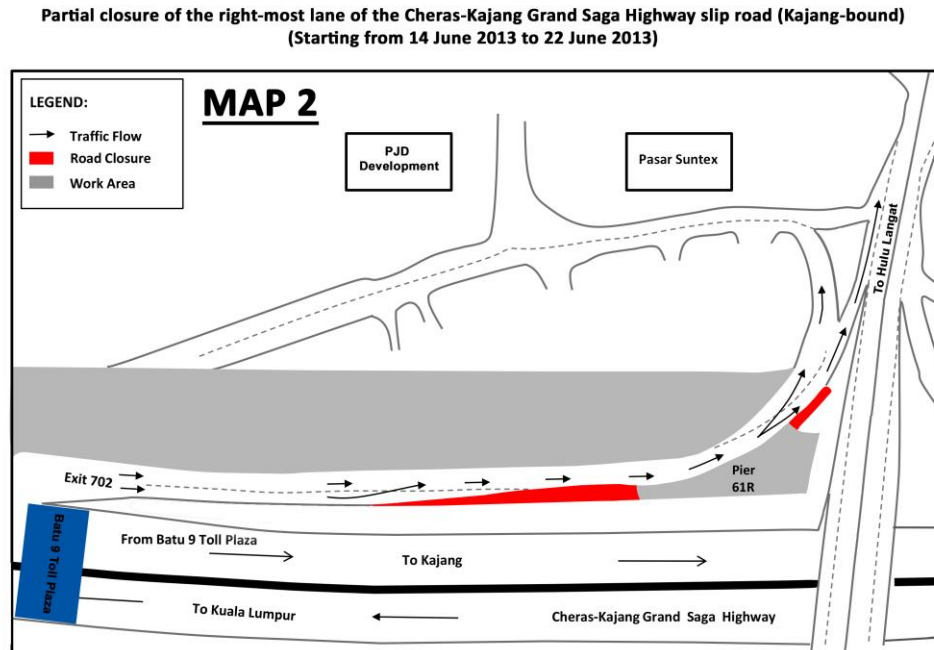
The left-most lane of the Cheras-Kajang (Grand Saga) Highway slip road will be partially closed, for a stretch of 200 metres, from **9 June 2013 to 14 June 2013**. (Please see Map 1.)



Map 1

ii. Right-most Lane

The right-most lane of the Cheras-Kajang (Grand Saga Highway) slip road will be partially closed for a stretch of 200 metres, from **14 June 2013 to 22 June 2013**. (Please see Map 2.)



Map 2

The temporary closures are necessary to facilitate preparation works for the construction of MRT piers. A comprehensive traffic management plan has been studied by the Cheras-Kajang (Grand Saga) Highway and Lembaga Lebuhraya Malaysia (LLM) so that measures can be taken to minimise disruption to traffic.

The closures are a key part of our safety practice at all MRT construction sites. It will ensure that any risk of public injury is minimised. Motorists are reminded to drive carefully near MRT worksites and to follow directional signs.

Safety barriers, hoardings and traffic cones will be installed at the work sites to ensure road users and pedestrians are well-informed of on-going works. In addition, a 24-hour MRT Ronda will be patrolling along the routes to attend to any emergencies.



MRT Corp wishes to apologise for any temporary inconvenience caused to the public during the construction of this world-class public transport facility that will benefit Malaysians at large.

The Sungai-Buloh Kajang Line will comprise 31 stations, and serve 1.2 million people along the route. It will also have strategic integration with KL's existing rail transport network, namely the LRT, Monorail and KTM Komuter, as well as intra and inter-city bus routes. The end result will be better connectivity for KL and its surrounding cities, while reducing the number of cars that enter the capital.

For more information on traffic diversion, the public can visit the MRT website at www.mymrt.com.my or www.mymrt-underground.com.my, twitter @MRTMalaysia or twitter @MyMRT Underground or call the MRT Hotline at 1-800-82-6868.

For media enquiries, please contact:

Pn. Siti Fadzillah Ismail
MMC-Gamuda KVMRT (PDP) Sdn Bhd

03-74933965 / sitifadzillah@mgjvkvmrt.com.my

Ms. Nadia Azmi
MRT Corp

03-20953861 / nadia.azmi@mymrt.com.my