

MEDIA RELEASE

SLIP ROAD CLOSURES ON JALAN CHERAS

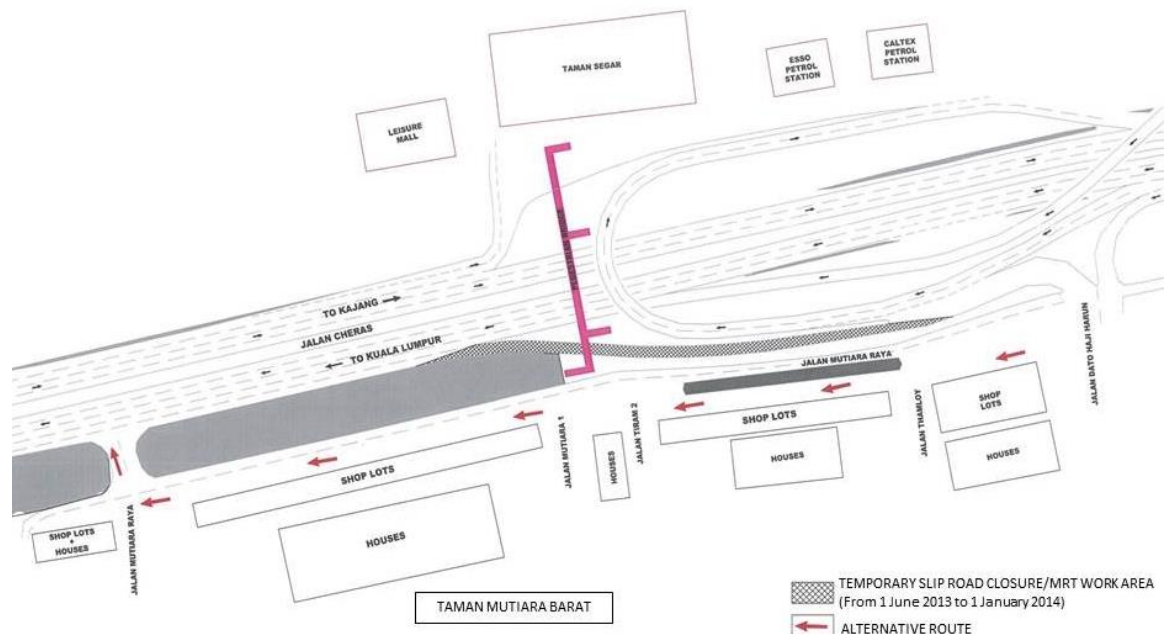
Kuala Lumpur, 30 May 2013: Mass Rapid Transit Corporation Sdn Bhd (MRT Corp) wishes to announce the following slip road closures:

i. Extension of closure at Taman Mutiara Barat (KL-bound)

The temporary closure of the slip road from Taman Mutiara Barat to Jalan Cheras next to the flyover to Taman Segar which was previously implemented on 10 February 2013 to 11 May 2013, is now extended for another seven (7) months from **1 June 2013 to 1 January 2014**.

As an alternative to access Jalan Cheras, motorists coming from Jalan Dato' Haji Harun are advised to use Jalan Mutiara Raya to get onto Jalan Cheras. (Please see Map 1 below)

MAP 1 : Temporary Slip Road Closure at Taman Mutiara Barat



ii. Taman Segar (Kajang-bound)

The slip road from Jalan Cheras near Taman Segar (in front of the Esso and Caltex petrol stations) heading towards Taman Cheras Hartamas and an emergency lane on Jalan Cheras, will be partially closed for a stretch of 6 metres for 30 days, effective from **1 June 2013 to 1 July 2013**. (Please see Map 2 below)



These slip road closures are to facilitate utility relocation and MRT pier construction works.

They are a key part of our safety practice at all MRT construction sites which will ensure that any risk of public injury is minimised. Motorists are reminded to drive carefully near MRT worksites, and to follow directional signs.

Safety barriers, hoardings and traffic cones will be installed at the work sites to ensure road users and pedestrians are well-informed of on-going works. In addition, a 24-hour MRT Ronda will be patrolling along the routes to attend to any emergencies.

MRT Corp wishes to apologise for any temporary inconvenience caused to the public during the construction of this world-class public transport facility that will benefit Malaysians at large.

The Sungai-Buloh Kajang Line will comprise 31 stations, and serve 1.2 million people along the route. It will also have strategic integration with KL's existing rail transport network, namely the LRT, Monorail and KTM Komuter, as well as intra and inter-city bus routes. The end result will be better connectivity for KL and its surrounding cities, while reducing the number of cars that enter the capital.



For more information on traffic diversion, the public can visit the MRT website at www.mymrt.com.my or www.mymrt-underground.com.my, twitter @MRTMalaysia or twitter @MyMRT Underground or call the MRT Hotline at 1-800-82-6868.

ENDS

For media enquiries, please contact:

*Siti Fadzillah Ismail
MMC-Gamuda KVMRT Sdn Bhd*

03-74933965 / sitifadzillah@mgjv-kvmrt.com.my

*Ms. Nadia Azmi
MRT Corp*

03-20953861 / nadia.azmi@mymrt.com.my