

TRAFFIC ANNOUNCEMENT

UPDATES ON TRAFFIC MANAGEMENT PLAN FOR MRT SSP CONSTRUCTION ALONG JALAN KUALA SELANGOR, JALAN JINJANG PERMAI 2 AND JALAN KEPONG

07 JULY 2017

1. CONTINUATION OF LANE CLOSURES ALONG JALAN KUALA SELANGOR (SUNGAI BULOH-BOUND)

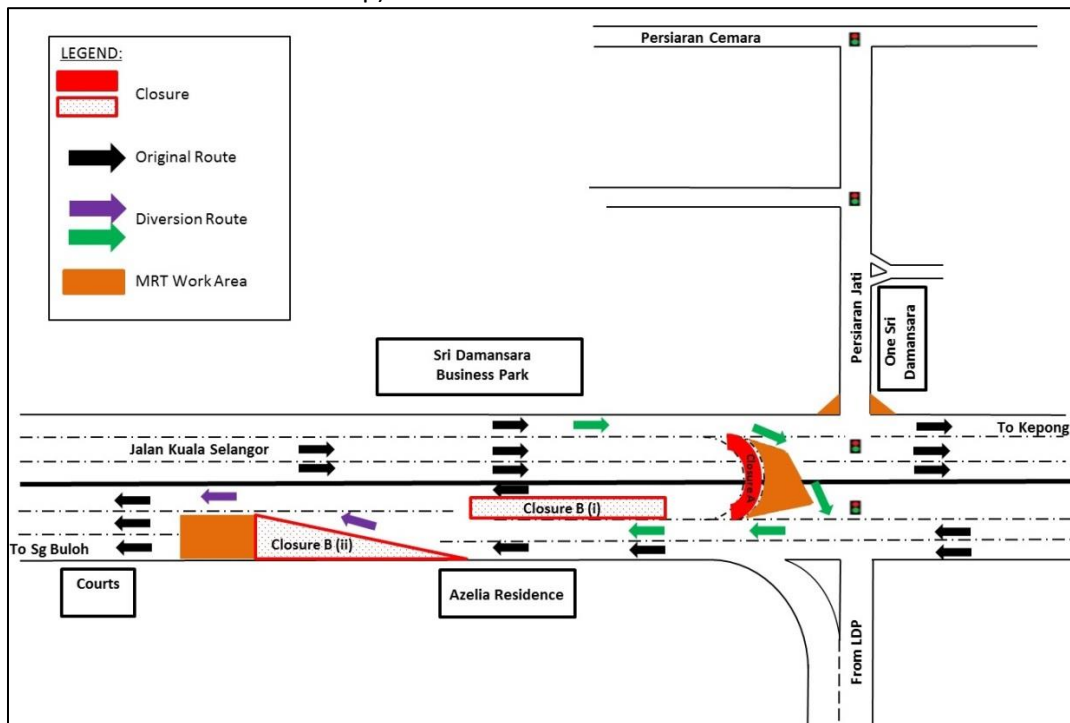
Date	11 July 2017 – 31 December 2017
Time	10:00pm – 6:00am
Duration	6 Months
Reason	To facilitate survey works, mapping and piloting and utilities relocation for MRT construction works

There will be a continuation of a long-term traffic management plan along Jalan Kuala Selangor (Sungai Buloh-bound) from **11 July 2017 to 31 December 2017**. The traffic management plan involves the following closures:

Closure A: (24 hours daily): U-Turn closure at KM52 of Lebuhraya Damansara Puchong (LDP) and DUKE 2 Interchange (Kepong-bound). Motorists on Kepong-bound wanting to head back to Sungai Buloh will be diverted to make the U-turn at the traffic light to LDP (as indicated in **GREEN** arrows in map).

Closure B (i) (10pm - 6am): One lane closure at KM52. The closure will take place at the ramp down towards Sungai Buloh (from Kepong), for an approximate stretch of 80 metres in front of Azelia Residence.

Closure B (ii) (10pm - 6am): Two lane closures at KM52.5. Motorists from Kepong/KL/LDP will be diverted to the right-most-lane of Jalan Kuala Selangor (Sungai Buloh-bound), for a stretch of approximately 50 metres. The stretch of closure is in between Courts Mammoth and Azelia Residence (as indicated in **PURPLE** arrows in map).



MAP 1 : CONTINUATION OF LANE CLOSURES ALONG JALAN KUALA SELANGOR (SUNGAI BULOH-BOUND)

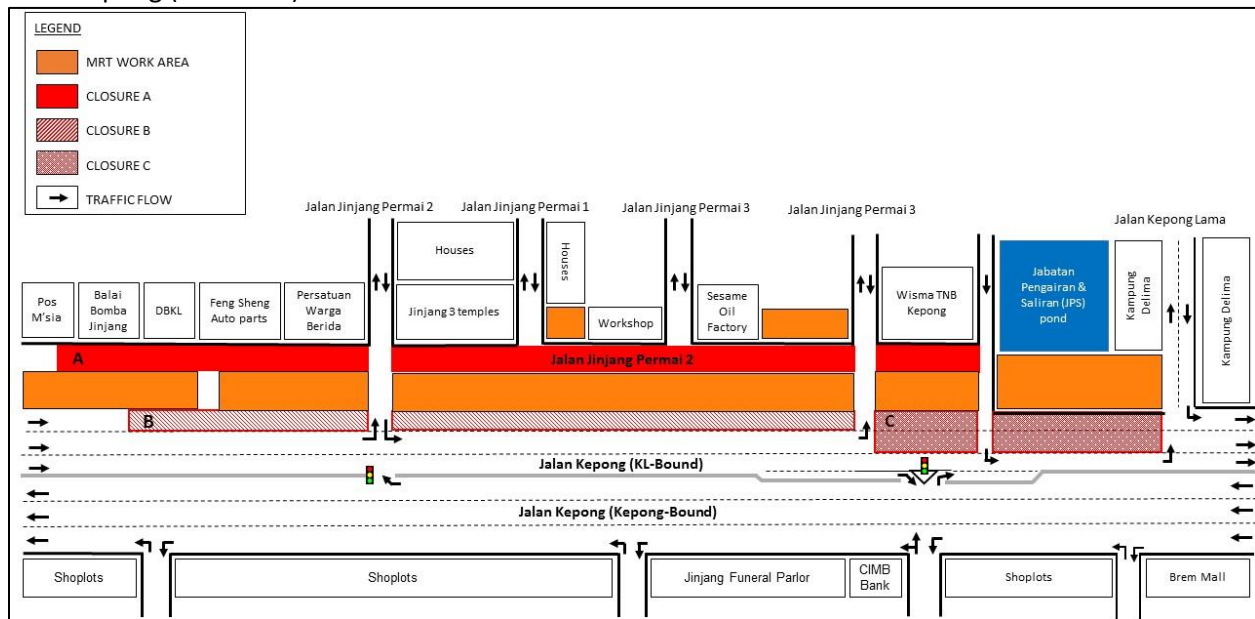
2. CONTINUATION OF NIGHT LANE CLOSURES BY STAGES ALONG JALAN JINJANG PERMAI 2 AND JALAN KEPONG (KL-BOUND)

Date	10 July 2017 – 07 October 2017
Time	10pm – 6am
Duration	3 months
Reason	To facilitate loading/unloading material and utilities relocation for MRT construction works.

There will be a continuation of night lane closure by stages along Jalan Jinjang Permai 2 and Jalan Kepong from **10 July 2017 to 07 October 2017, 10pm - 6am**. The traffic management plan involves the following closures:

- **Closure A:** Internal road of Jalan Jinjang Permai 2 starting from Balai Bomba Jinjang to Wisma TNB Kepong. Flagman will be in place using "STOP" and "GO" method to indicate the traffic flow.
- **Closure B:** Left most lane closure by stages along Jalan Kepong (KL-bound) for a stretch of 180 meters.
- **Closure C:** Left most & middle lane closure by stages along Jalan Kepong (KL-bound) for a stretch of 180 meters.

The closures are in stages and at any one time there will be one (1) lane made available for motorists on Jalan Kepong (KL-bound).



MAP 2 : CONTINUATION OF NIGHT LANE CLOSURES BY STAGES ALONG JALAN JINJANG PERMAI 2 AND JALAN KEPONG (KL-BOUND)

For media enquiries, please contact:

Mohd Sofie Hassan (**Item 1**)

Tel: +6019 228 3004

sofie@sunway.com.my

Juliet Choong Wai Gaik (**Item 2**)

Tel: +6012 601 0318

julietchoong@ijm.com

Leanne Ann Susau (**Item 1-2**)

Tel: +603 7493 3832

leanne@mgjv-kvmrt.com.my

MMC GAMUDA KVMRT (PDP SSP) SDN BHD (1117100-V)
 Block A, Level 17, Menara Mustapha Kamal, PJ Trade Centre
 No 8, Jalan PJU 8/8A, Bandar Damansara Perdana, 47820 Petaling Jaya
 Selangor Darul Ehsan, Malaysia
 T: +603-7494 2222 F: +603-7727 0222 www.mymrt.com.my