

TRAFFIC ANNOUNCEMENT
UPDATES ON TRAFFIC MANAGEMENT PLAN FOR MRT SSP CONSTRUCTION ALONG JALAN
KEPONG (SUNGAI BULOH-BOUND AND JINJANG-BOUND)
27 NOVEMBER 2017

1. CONTINUATION OF LANE CLOSURES ALONG JALAN KEPONG – AEON BIG KEPONG (SUNGAI BULOH-BOUND AND JINJANG-BOUND)

Date	29 November 2017 - 27 February 2018
Time	11:00pm – 6:00am
Duration	3 months
Reason	To facilitate utilities detection, relocation works and tree cutting for MRT SSP Line

There will be a continuation of lane closures along Jalan Besar Kepong – near AEON BIG Kepong (Sungai Buloh-bound and Jinjang - bound) starting from **29 November 2017 until 27 February 2018, 11:00pm to 6:00am daily, intermittently**. The traffic management plan involves the following closures:

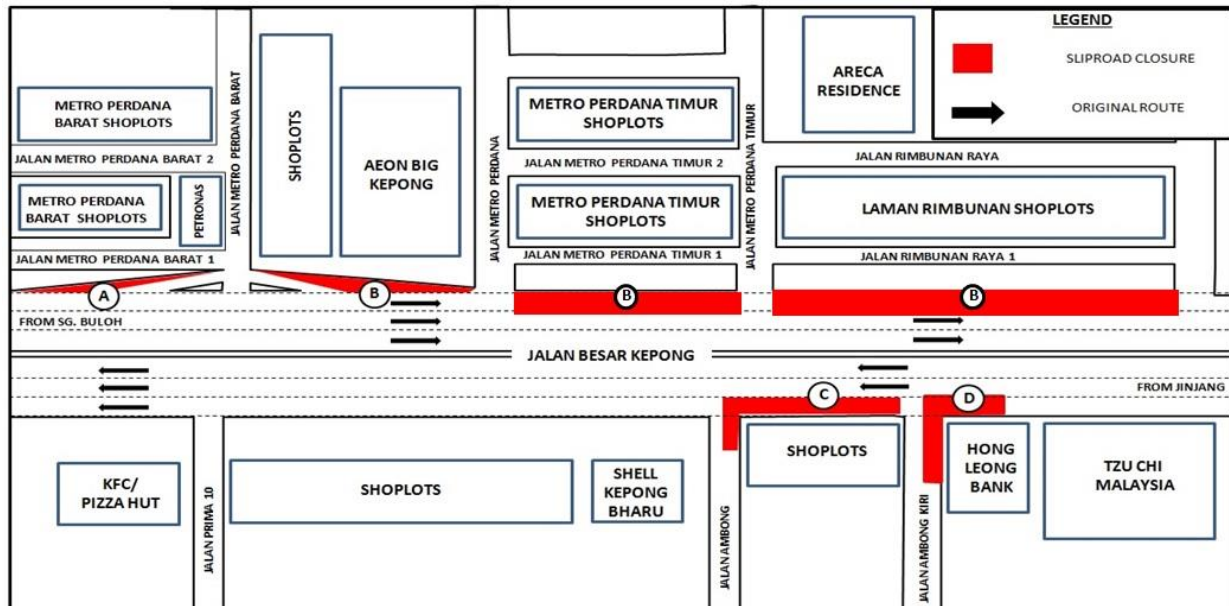
Closure A: Partial lane closure for a stretch of 200 metres starting from Jalan Besar Kepong until the slip road entering Jalan Metro Perdana Barat (Jinjang-bound).

Closure B: Partial lane closure for stretch of 300 metres starting from the slip road exiting Jalan Metro Prima Barat heading towards Jinjang (Jinjang-bound).

Closure C: Partial lane closure along Jalan Besar Kepong (Sungai Buloh-bound) for a stretch of 100 metres starting from the junction of Jalan Ambong Kiri until the junction of Jalan Ambong.

Closure D: Partial lane closure along Jalan Besar Kepong (Sungai Buloh-bound) for a stretch of 100 metres starting in front of Hong Leong Bank entering Jalan Ambong Kiri.

At any one time, there will be three (3) lanes made available during Closure A and B and two (2) lanes available during Closure C and D for motorist.



MAP 1 : CONTINUATION OF LANE CLOSURES ALONG JALAN KEPONG – AEON BIG KEPONG (SUNGAI BULOH-BOUND AND JINJANG-BOUND)

2. CONTINUATION OF LANE AND PARKING BAY CLOSURES ALONG JALAN KEPONG – DESA JAYA SHOP LOTS (SUNGAI BULOH-BOUND AND JINJANG-BOUND)

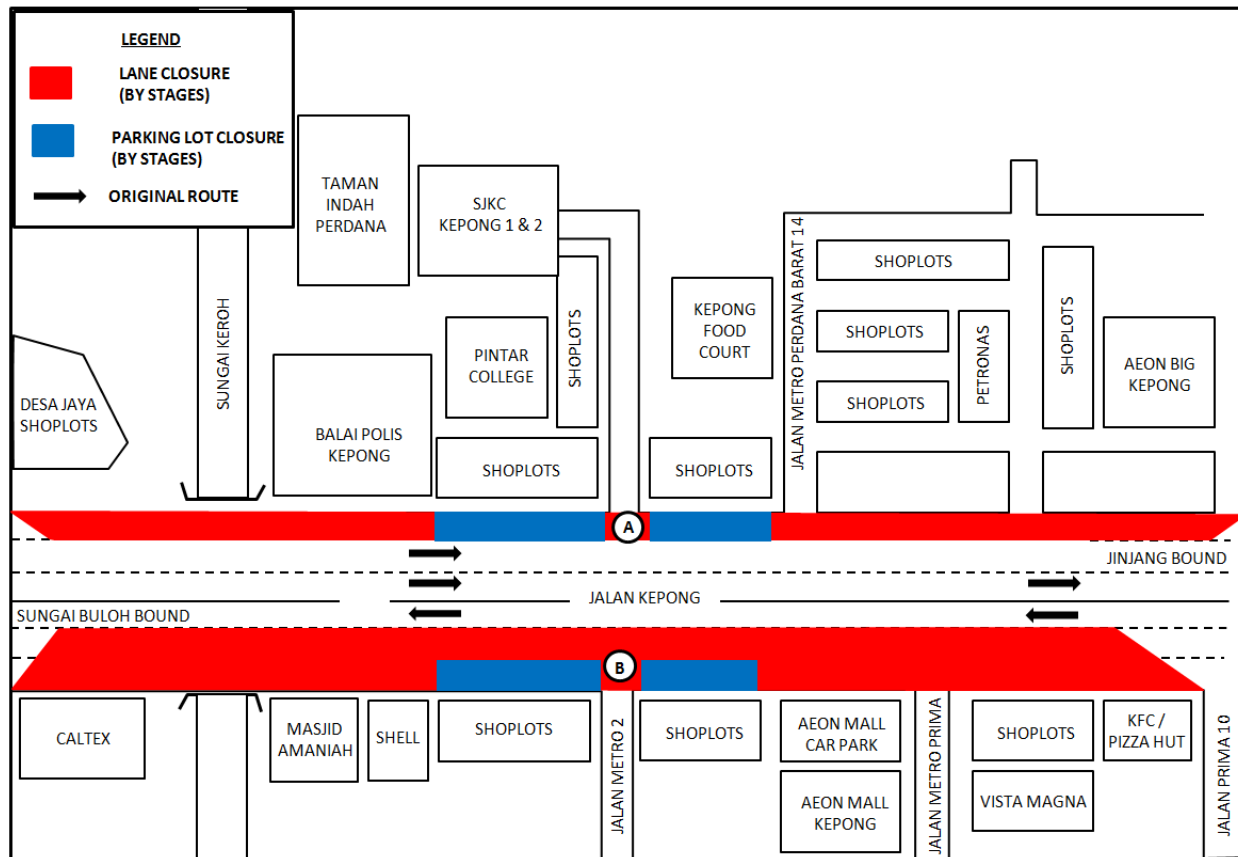
Date	29 November 2017 - 27 February 2018
Time	11:00pm – 6:00am
Duration	3 months
Reason	To facilitate utilities detection, relocation works and tree cutting for MRT SSP Line

There will be a continuation of lane closures along Jalan Kepong (Jinjang-bound and Sungai Buloh-bound) at Pekan Lama Kepong and Metro Perdana starting from **29 November 2017 to 27 February 2018, 11:00pm to 6:00 am daily, intermittently**. The traffic management plan involves the following closures:

Closure A: Left-most lane and parking bay closure by stages for a total stretch of 600 metres starting from Pekan Lama Kepong shop lots towards Metro Perdana Barat (Jinjang-bound).

Closure B: Two left lane and parking bay closure by stages for a total stretch of 500 metres starting from Casa Magna KFC/Pizza Hut, Metro Perdana until Caltex Kepong, Desa Jaya (Sungai Buloh-bound).

At any one time, there will only be one (1) closure. During the closure, there will be two (2) lanes made available for (Jinjang-bound) and one (1) lane will be made available for (Sungai Buloh-bound) motorists.



MAP 2 : CONTINUATION OF LANE AND PARKING BAY CLOSURES ALONG JALAN KEPONG – DESA JAYA SHOP LOTS (SUNGAI BULOH-BOUND AND JINJANG-BOUND)

3. CONTINUATION OF LANE CLOSURES ALONG JALAN KEPONG – LI MENG FURNITURE (SUNGAI BULOH-BOUND AND JINJANG-BOUND)

Date	29 November 2017 – 27 February 2018
Time	11:00pm – 6:00am
Duration	3 months
Reason	To facilitate utilities detection and relocation works along Jalan Kepong for MRT SSP Line

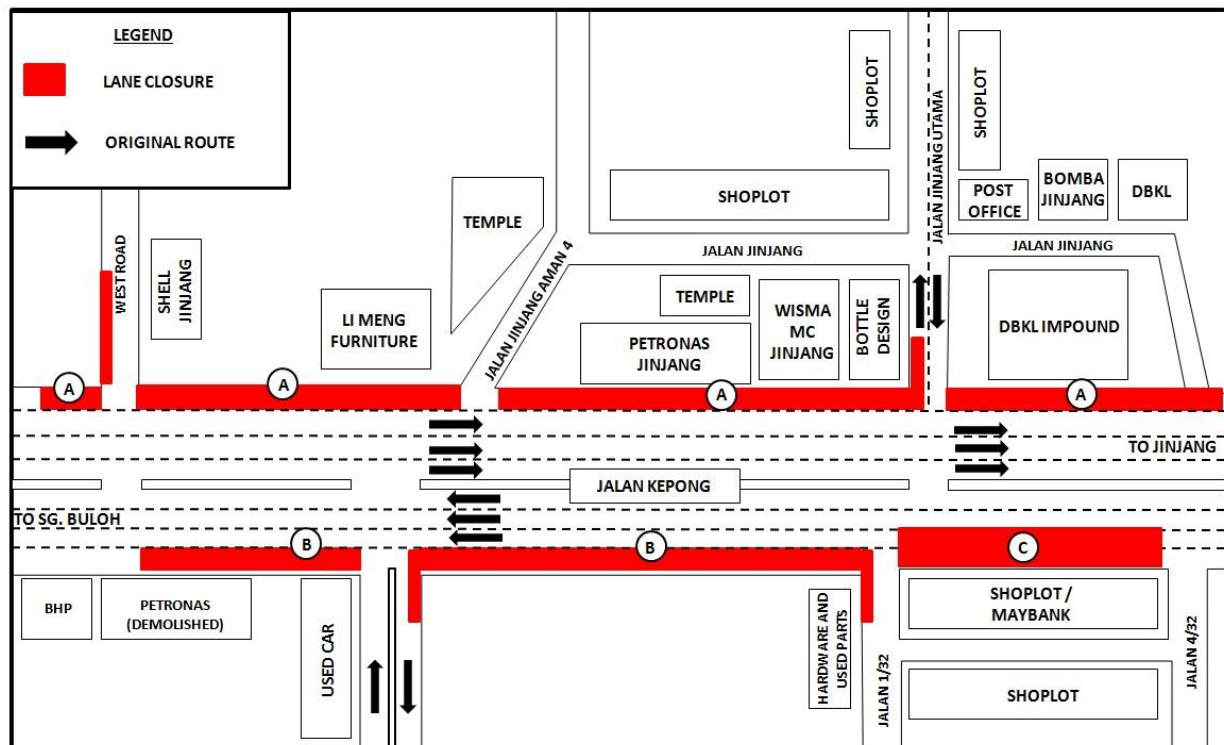
There will be a continuation of lane closures along Jalan Kepong (Sungai Buloh-bound and Jinjang-bound) starting **from 29 November 2017 until 27 February 2018, 11:00pm to 6:00am daily, intermittently**. The traffic management plan involves the following closures:

Closure A: Left-most lane closure by stages for a total stretch of 600 metres starting from West Road towards DBKL Impound Yard, Jalan Jinjang (Jinjang-bound).

Closure B: Left-most lane closure by stages for a total stretch of 500 metres starting from Jalan 1/32 until the BHP Petrol station (Sungai Buloh-bound).

Closure C: Two lanes closure for a total stretch of 150 metres starting from Jalan 4/32 until Jalan 1/32 (Sungai Buloh-bound).

The closures are carried out in **stages and intermittently**, therefore at any one time there **will be only one closure implemented**.



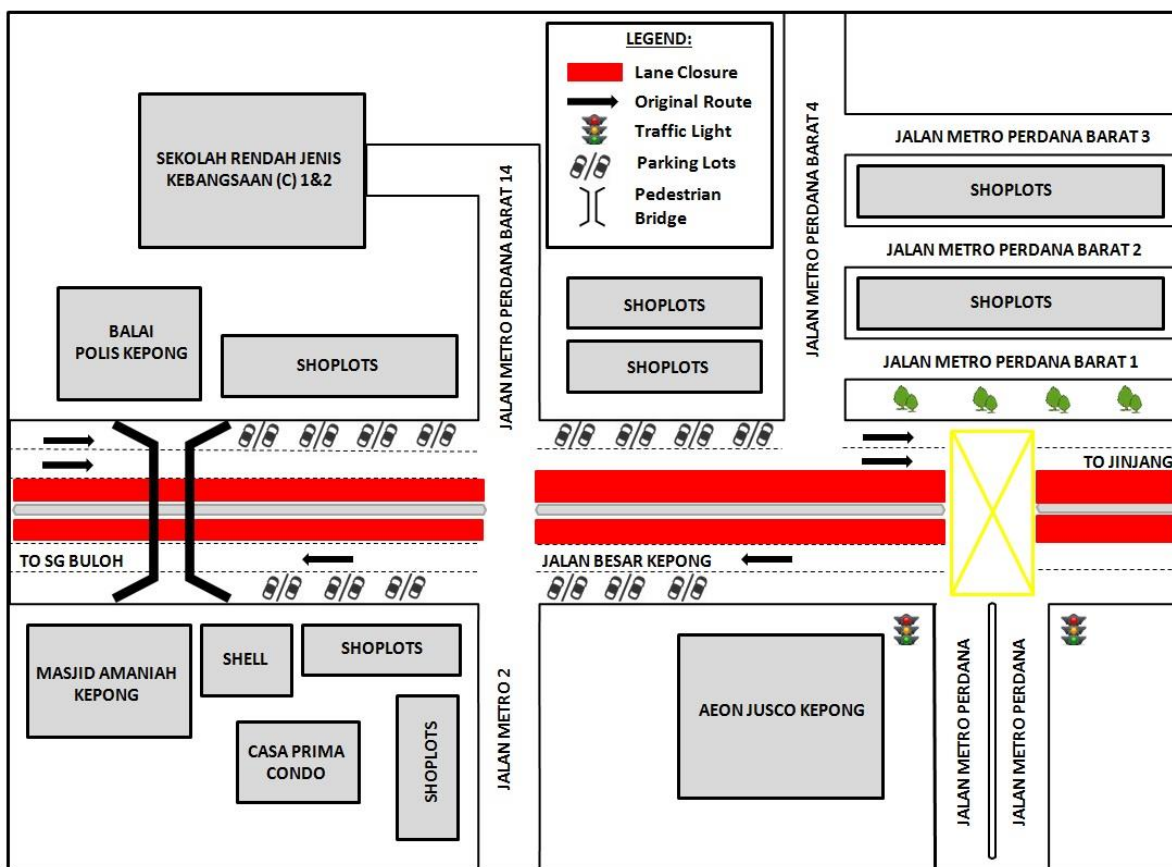
MAP 3 : CONTINUATION OF LANE CLOSURES ALONG JALAN KEPONG – LI MENG FURNITURE (SUNGAI BULOH-BOUND AND JINJANG-BOUND)

4. CONTINUATION OF LANE CLOSURES ALONG JALAN KEPONG – BALAI POLIS KEPONG (SUNGAI BULOH-BOUND AND JINJANG-BOUND)

Date	29 November 2017 - 27 February 2018
Time	11:00pm – 6:00am
Duration	3 months
Reason	To facilitate utilities detection, relocation works and tree cutting for MRT SSP Line

There will be a continuation of lane closures along Jalan Kepong – near Balai Polis Kepong (Sungai Buloh-bound and Jinjang-bound) for a stretch of 600 metres starting from **29 November 2017 to 27 February 2018, 11:00 until 6:00am daily, intermittently.**

During this closure, at any one time, there will be one (1) lane made available for motorists at both bounds.



MAP 4 : CONTINUATION OF LANE CLOSURES ALONG JALAN KEPONG – BALAI POLIS KEPONG (SUNGAI BULOH-BOUND AND JINJANG-BOUND)

For media enquiries, please contact:

Zaini Ghazali
Leanne Ann Susau

Tel: +6012 328 1821
Tel: +603 7493 3832

zainighazali@azrb.com
leanne@mgjv-kvmrt.com.my

MMC GAMUDA KVMRT (PDP SSP) SDN BHD (1117100-V)
Block A, Level 17, Menara Mustapha Kamal, PJ Trade Centre
No 8, Jalan PJU 8/8A, Bandar Damansara Perdana, 47820 Petaling Jaya
Selangor Darul Ehsan, Malaysia
T: +603-7494 2222 F: +603-7727 0222 www.mymrt.com.my