

**TRAFFIC ANNOUNCEMENT
 UPDATES ON TRAFFIC MANAGEMENT PLAN FOR MRT CONSTRUCTION
 AT CHERAS KAJANG HIGHWAY (KAJANG AND KUALA LUMPUR-BOUND)**

13 OCTOBER 2017

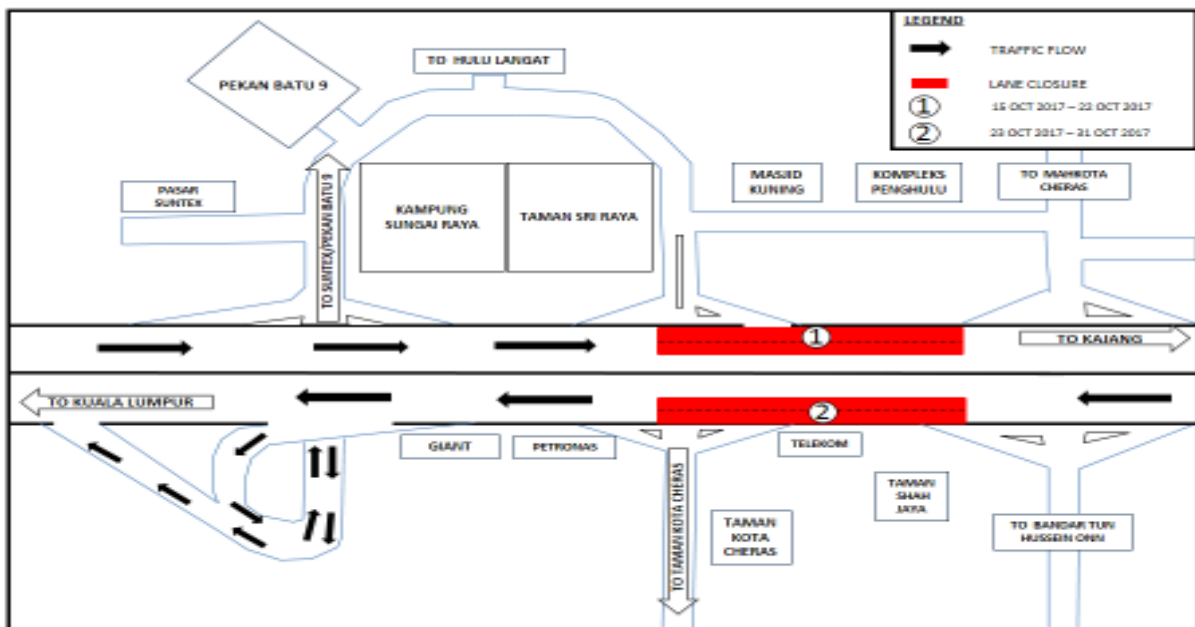
1. CONTINUATION OF LANE CLOSURE AT KM 14.0 UNTIL KM 15.5 AT CHERAS KAJANG HIGHWAY (KAJANG AND KUALA LUMPUR BOUND) (INTERMITTENT CLOSURE)

Date	15 October 2017 – 31 October 2017
Time	10:00PM - 5:00AM
Duration	17 Nights
Reasons	To facilitate the reinstatement of street lighting and permanent signage and road marking works.

There will be a continuation of two - lane closures at KM 14.0 until KM 15.5 for the stretch of 1.5km on the Cheras Kajang Highway from **15 October 2017 – 31 October 2017**.

Closure 1 - Kajang Bound (15 October 2017 – 22 October 2017) from 10:00PM - 5:00AM
Closure 2 – Kuala Lumpur Bound (23 October 2017 – 31 October 2017) from 10:00PM - 5:00AM

Only two lanes will be closed at one time and during this closure, **FOUR lanes** will be reduced to **TWO lanes** for the stretch of **1.5 km** for both bounds (intermittent).



MAP 1: LANE CLOSURE AT KM 14.0 UNTIL KM 15.5 AT CHERAS KAJANG HIGHWAY (KAJANG AND KUALA LUMPUR BOUND)

2. CONTINUATION OF LANE CLOSURE AT KM 13.3 UNTIL KM 14.7 AT CHERAS KAJANG HIGHWAY (KAJANG AND KUALA LUMPUR BOUND) (INTERMITTENT CLOSURE)

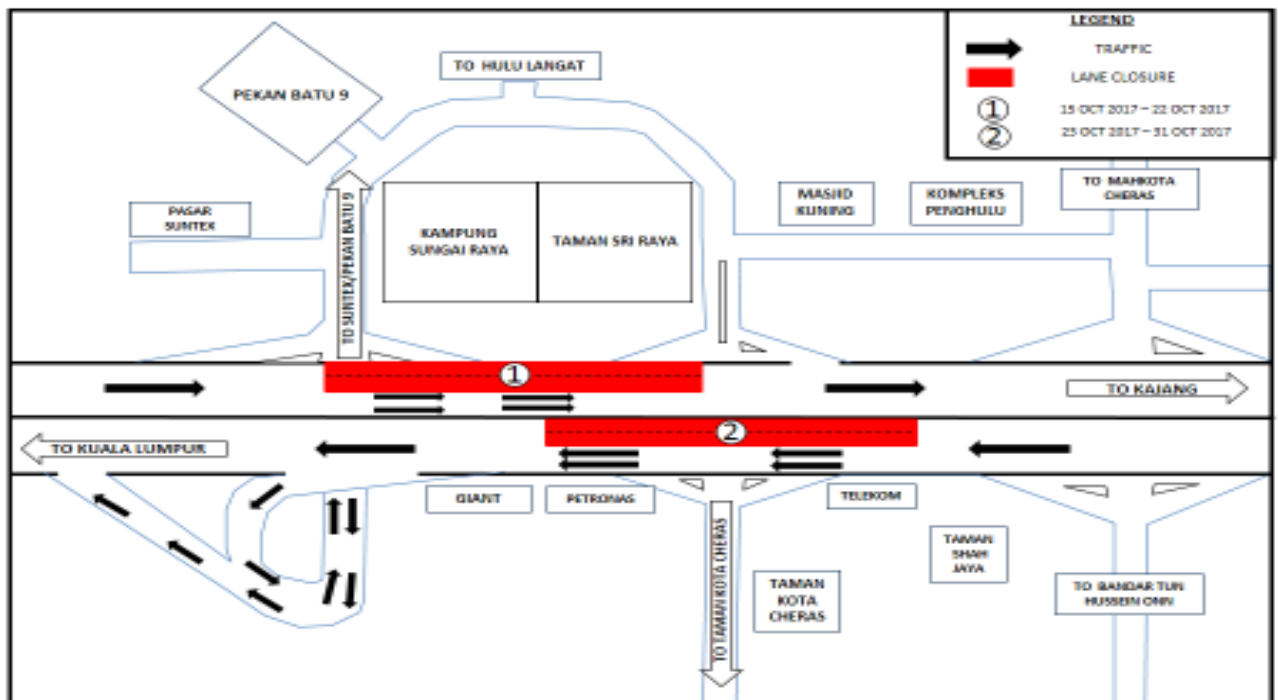
Date	15 October 2017 – 31 October 2017
Time	10:00PM - 5:00AM
Duration	17Nights
Reasons	To facilitate the reinstatement of street lighting and permanent signage and road marking works.

There will be a continuation of the two-lane closure at Cheras – Kajang Highway (Kajang and Kuala Lumpur bound) from **15 October 2017 until 31 October 2017** between **10:00PM - 5:00 AM** stretching from KM 13.3 until KM 14.7 for **1.4 km** (near Kampong Sungai Raya and Taman Sri Raya).

Closure 1 - Kajang Bound (15 October 2017 – 22 October 2017) from between **10:00PM - 5:00AM**

Closure 2 – Kuala Lumpur Bound (23 October 2017 – 31 October 2017) from between **10:00PM - 5:00AM**

Only two lanes will be closed at one time and during this closure, **FOUR lanes** will be reduced to **TWO lanes** for the stretch of **1.4 km** for both bounds (intermittent).



MAP 2:LANE CLOSURE AT KM 13.3 UNTIL KM 14.7 AT CHERAS KAJANG HIGHWAY (KAJANG AND KUALA LUMPUR BOUND)

3. CONTINUATION OF PARTIAL LANE CLOSURE AT EXIT 701 – PGA INTERCHANGE AT CHERAS KAJANG HIGHWAY (KAJANG AND KUALA LUMPUR BOUND) (INTERMITTENT CLOSURE)

Date	15 October 2017 – 31 October 2017
Time	10:00AM - 4:00PM and 10:00PM - 5:00AM
Duration	17 Nights
Reasons	To facilitate reinstatement of street lightings and permanent signage and road marking works

There will be a partial lane closure at Exit 701 at the PGA Interchange (Kajang and Kuala Lumpur bound) starting from **15 October 2017 until 31 October 2017** from **10:00AM – 4:00PM** and from **10:00 PM – 5:00AM**. The closure will be implemented in **TWO stages** as numbered in the map.

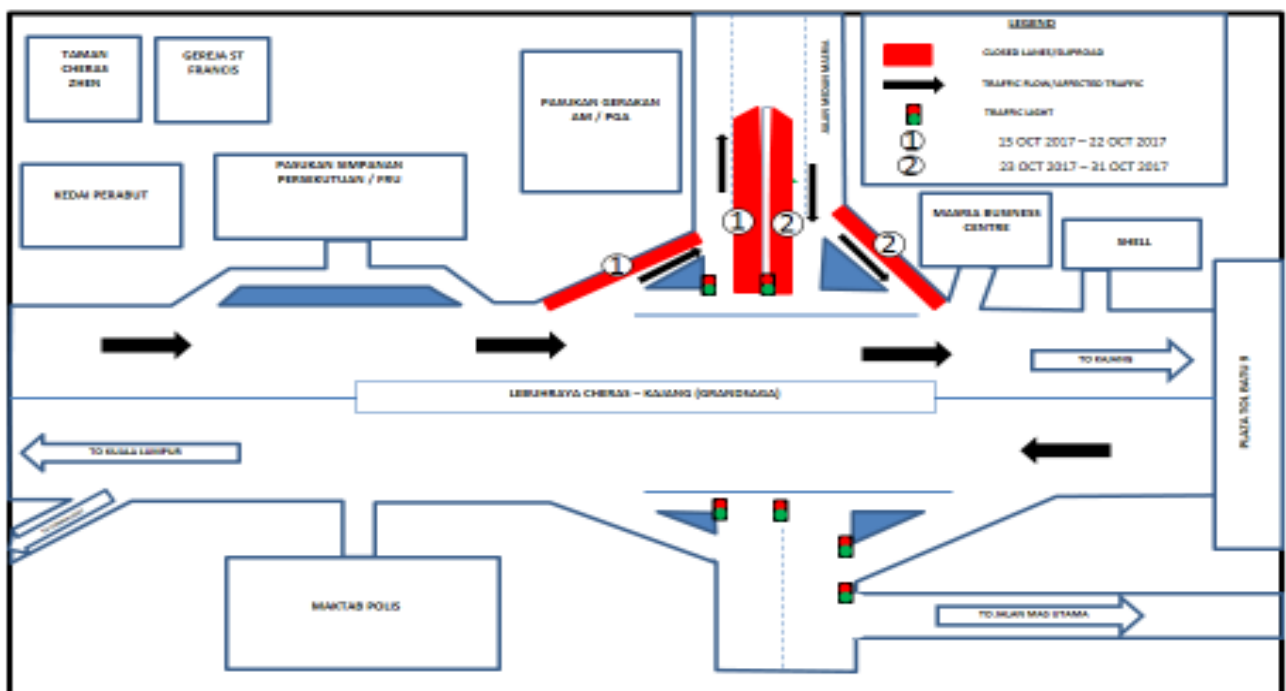
Stage 1: numbered as 1 (15 October 2017 – 22 October 2017)

- One lane closure on the left-most lane on the slip road entering PGA – Kajang Bound and Median 1 lane closure heading towards PGA Bound.

Stage 2: numbered as 2 (23 October 2017 – 31 October 2017)

- Slip road closure (Kajang Bound) from PGA and Median 1 lane closure heading towards Kuala Lumpur Bound.

During this closure stages, motorists are advised to use the remaining opened lane on each bound. No other road diversion will be implemented during this closure.



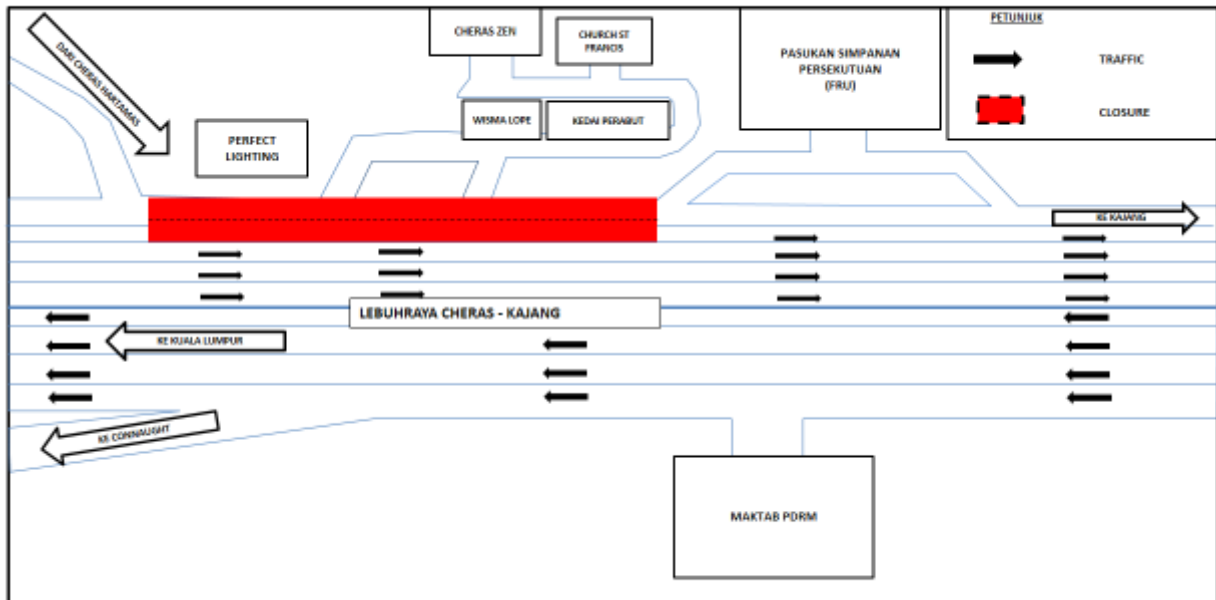
MAP 3: PARTIAL LANE CLOSURE AT EXIT 701 – PGA INTERCHANGE ON CHERAS KAJANG HIGHWAY (KAJANG AND KUALA LUMPUR BOUND)

4. CONTINUATION OF LANE CLOSURE AT KM 10.6 UNTIL KM 11.6 AT CHERAS KAJANG HIGHWAY (KAJANGBOUND) (INTERMITTENT CLOSURE)

Date	15 October 2017 – 31 October 2017
Time	10:00PM - 5:00AM
Duration	17 Nights
Reasons	To facilitate the reinstatement of street lighting, reinstatement of permanent signage and road marking works.

There will be a continuation of the two -lane closure at the Cheras Kajang Highway (Kajang Bound) from KM 10.6 until KM 11.6 for the stretch of **1km**. The closure will be from Cheras Hartamas exit to Cheras Kajang Highway (Kajang bound) until slip road entering FRU Complexat Batu 7,Cheras) from **15 October 2017 until 31 October 2017, from between 10:00PM - 5:00AM**

During this closure, **THREE lanes** will remain open for motorist heading to Kajang from Kuala Lumpur.



MAP 4: LANE CLOSURE AT KM 10.6 UNTIL KM 11.6 AT CHERAS KAJANG HIGHWAY (KAJANG BOUND)

5. CONTINUATION OF SLIP ROAD CLOSURE AT THE EXIT 702 AND EXIT 703 AT CHERAS KAJANG HIGHWAY (KAJANG AND KUALA LUMPUR BOUND) (INTERMITTENT CLOSURE)

Date	15 October2017 – 31 October2017
Time	10:00PM - 5:00AM
Duration	17 Nights
Reasons	To facilitate the reinstatement of street lighting, reinstatement of permanent signage, road resurfacing (milling & pavement) and road marking works.

There will be a continuation of slip road closures at Exit 702 and Exit 703 (Kajang-bound and Kuala Lumpur-bound), Cheras-Kajang Highway from **15 October2017 – 31 October 2017** starting from **10:00PM – 5:00AM**. These closures **will not be conducted simultaneously**.

Closure A (Exit 702, Hulu Langat Interchange, Kajang Bound)

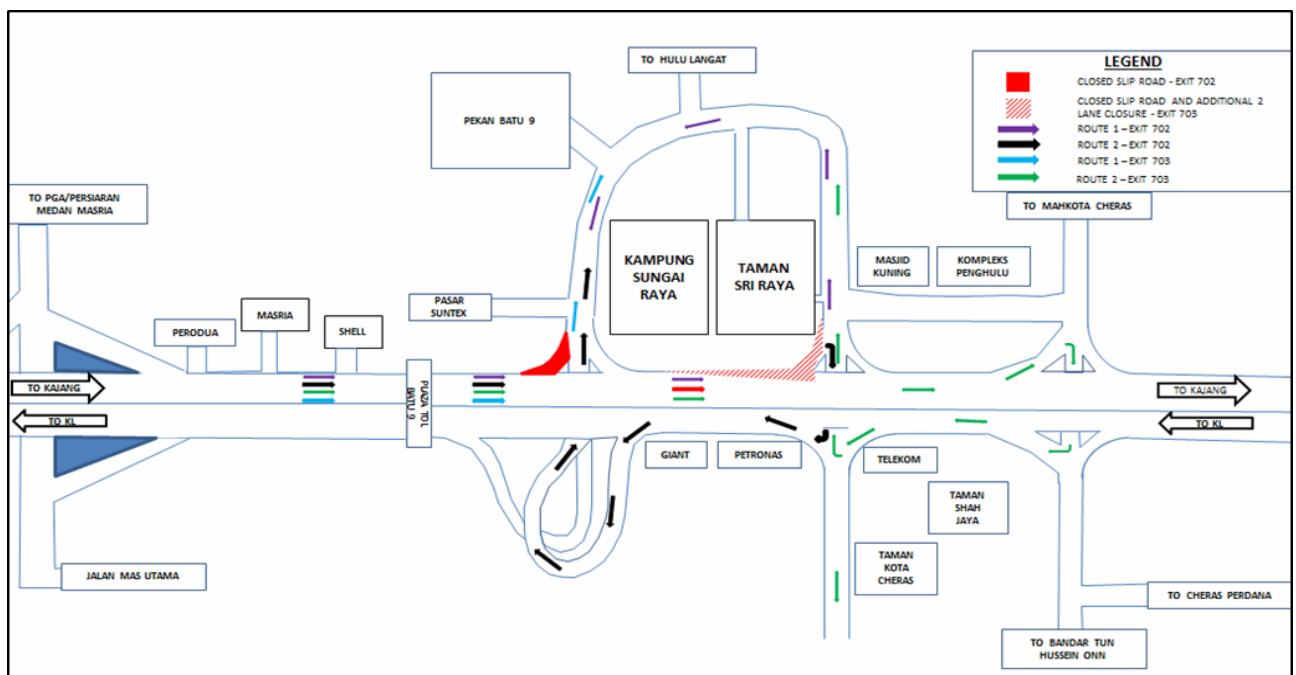
- Motorists from Kuala Lumpur heading towards Hulu Langat/Pekan Batu 9 will have to use Exit 703 (TELEKOM Interchange) entering Jalan Hulu Langat and proceed to Pekan Batu 9/Hulu Langat/Taman Suntex as indicated in **PURPLE** in the appendedmap,

OR

- Make a U-Turn at Exit 703 (entering Cheras-Kajang Highway – Lumpur Bound) and take Exit 702 Interchange entering Taman Suntex/Pekan Batu 9 as indicated in **BLACK** in the appended map.

Closure B (Exit 703, Telekom Interchange, Kajang Bound)

- Motorists from Kuala Lumpur heading towards PekanBatu 9/ JalanCheras / Hulu Langat will have to turn left at Exit 702 as indicated in **BLUE** in themap.
- Motorists from Kuala Lumpur heading towards Taman Kota Cheras will be directed to make a U-turn at Bandar TunHusseinOnn Interchange (Exit 704) and use slip road at Exit 703 (Taman Kota Cheras-bound) as indicated in **GREEN** in the appended map



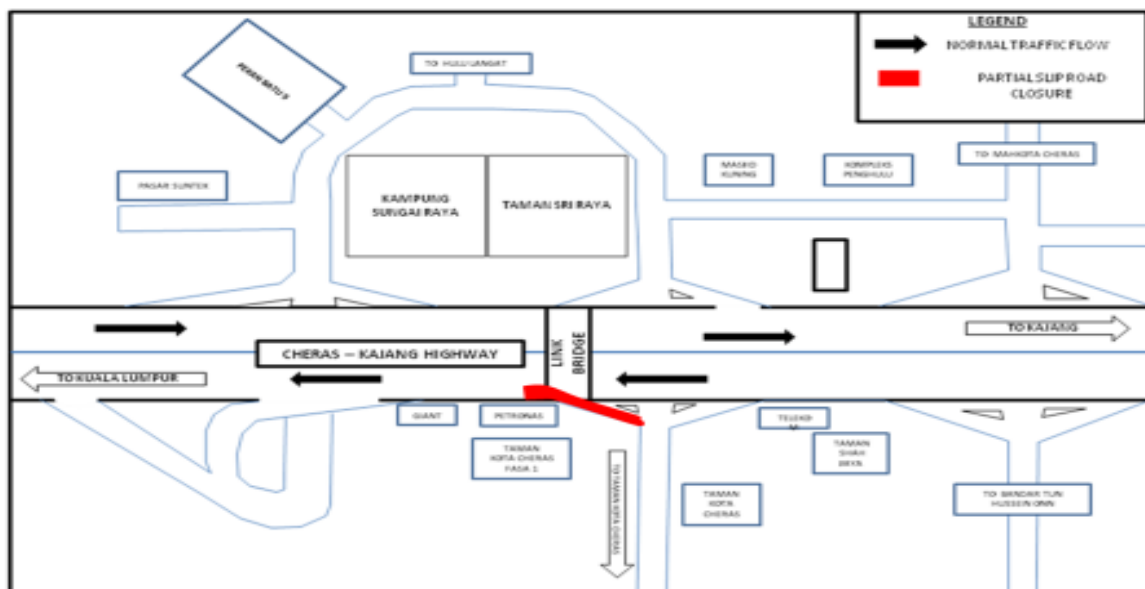
MAP 5: SLIP ROAD CLOSURE AT EXIT 702 AND EXIT 703 AT CHERAS KAJANG HIGHWAY (KAJANG AND KUALA LUMPUR BOUND)

6. CONTINUATION OF PARTIAL LANE AND SLIP ROAD CLOSURE AT EXIT 703 – TELEKOM INTERCHANGE AT CHERAS KAJANG HIGHWAY (KUALA LUMPURBOUND) (INTERMITTENT CLOSURE)

Date	15 October 2017 – 31 October 2017
Time	10:00AM - 4:00PM and 10:00PM - 5:00AM
Duration	17 Days
Reason	To facilitate the reinstatement of street lighting, permanent signage, road resurfacing (milling & pavement) and road marking works

There will be a partial lane closure on the slip road from Taman Kota Cheras entering the Cheras – Kajang Highway (Kuala Lumpur-bound, nearby Station Petronas Batu 9) from **15 October 2017 until 31 October 2017** between **10:00AM - 4:00PM** and between **10:00PM – 5:00AM**.

No road diversion will be made during this closure.



MAP 6: PARTIAL LANE AND SLIP ROAD CLOSURE AT EXIT 703 – TELEKOM INTERCHANGE AT CHERAS KAJANG HIGHWAY (KUALA LUMPUR BOUND)

For media enquiries, please contact:

Hillalluddin Mohd Ali

Tel: [+6019 201 0002](tel:+60192010002)

hillalluddin@azrb.com

Leanne Ann Susau

Tel: +603 7493 3963

Leanne@mgjv-kvmrt.com.my